


ICOM

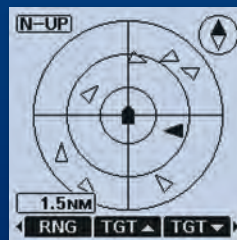
IC-M94D

VHF MARINE TRANSCEIVER WITH DSC & AIS

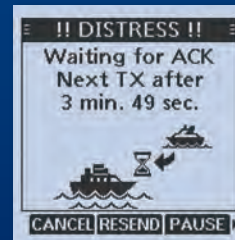


AIS Traffic Info, Now in Your Hand

▶ Simplified AIS and Class-H DSC



AIS screen



DSC ACK screen

- ▶ 6 W RF Output Power
- ▶ Class-Leading 1500 mW Audio Output
- ▶ Simplified Navigation Function
- ▶ 10 Hours (approx.) of Long Operating Time*
* Typical operation with 5:5:90 duty ratio.
- ▶ Float'n Flash and MOB Auto Set Functions

Simplified AIS and DSC in One Package

The simplified AIS and DSC functions add further assurance for safety at sea. With the integrated AIS receiver, real-time AIS vessel traffic information are shown on the display. The AIS target call function allows you to easily set up a DSC individual call. Distress calls can be made with the rear panel button.



DISTRESS button

6 W RF Output Power and 10 Hours of Operating Time

The IC-M94D's 6 watts*1 of transmit power provides extended communication range for the user. Supplied 2400 mAh (typical) high capacity Li-ion battery, BP-306 provides 10 hours of operating time, under normal conditions*2.

*1 5 W for AUS version. *2 Approximate, typical operation with 5:5:90 duty ratio.

Class-Leading 1500 mW Audio Output

Icom's custom high-power capacity speaker delivers a loud 1500 mW (typical) audio output with improved acoustic sound clarity for noisy maritime environments.

Simplified Navigation Function

The Navigation function guides you to a specified waypoint. You can assign a maximum of 50 favorite fishing spots or destinations as waypoints.



Navigation screen

Float'n Flash and MOB Auto Set Functions

The radio floats with a flashing LED light to help you retrieve it from the water. Pressing the distress button while Float'n Flash is working will transmit the MOB distress signal, rather than the plain undesignated one for better protection of sailors.

And More

- Integrated GPS receiver
- Active noise canceling technology
- IPX7 submersible (1 m depth of water for 30 minutes)
- Weather channel receive (for USA version)
- Dual watch and Tri-watch functions
- Favorite channel function
- Supports 4-digit channels
- AquaQuake™ prevents audio degradation from a water-logged speaker

OPTIONS

Some options may not be available in some countries. Please ask your dealer for details.

RECHARGEABLE Li-ion BATTERY PACK

BP-306
Li-ion 7.2 V,
2280 mAh (minimum)
2400 mAh (typical)

Provides 10 hours* of operating time.
* Approximate, Typical operation with 5:5:90 (Power save ON)

RAPID CHARGER

BC-251
Charges the BP-306 in 3.5 hours (approx.).
An AC adapter is supplied.

SPEAKER-MICROPHONES

HM-228
IPX7 compact type

HM-165
IPX7 rugged type
Floats in water with the radio.

LEATHER BELT HANGERS

MB-96FL
Long fixed type

MB-96F
Fixed type

CIGARETTE LIGHTER CABLE

CP-25H
For use with BC-251

ANTENNA FA-SC59V
Same as supplied

BELT CLIP MB-133
Same as supplied

Icom, Icom Inc. and the Icom logo are registered trademarks of Icom Incorporated (Japan) in Japan, the United States, the United Kingdom, Germany, France, Spain, Russia, Australia, New Zealand and/or other countries. AQUAQUAKE is a trademark of Icom Incorporated. All other products or brands are registered trademarks or trademarks of their respective holders.

Icom Inc.

1-1-32, Kamiminami, Hirano-Ku, Osaka 547-0003, Japan Phone: +81 (06) 6793 5302 Fax: +81 (06) 6793 0013

www.icomjapan.com

Count on us!

Icom America Inc.
www.icomamerica.com

Icom (Europe) GmbH
www.icomeurope.com

Icom (Australia) Pty. Ltd.
www.icom.net.au

Your local distributor/dealer:

Icom Canada
www.icomcanada.com

Icom Spain S.L.
www.icomspain.com

Icom Asia Co., Ltd.
www.icomasia.com

Icom Brazil
E-mail: sales@icombrasil.com

Icom (UK) Ltd.
www.icomuk.co.uk

Icom France s.a.s.
www.icom-france.com

SPECIFICATIONS

GENERAL		
Frequency range	TX RX RX (CH70) RX (AIS)	156.025–157.425 MHz 156.050–163.275 MHz 156.525 MHz 162.025 MHz
Usable channel groups	INT, USA, CAN, WX channels	
Type of emission	16K0G3E (FM), 16K0G2B (DSC) 16K0GXW (GMSK)	
Current drain (at 7.2 V DC)	TX (6 W/1 W output) RX (Inter SP/Exter SP Max. audio)	1500 mA/700 mA (approx.) 700 mA/350 mA (approx.)
Operating temperature range	–20°C to +60°C; –4°F to +140°F	
Antenna impedance	50 Ω	
Dimensions (W×H×D) (projections not included)	60.9 × 145.8 × 43.8 mm; 2.4 × 5.7 × 1.7 in	
Weight (approximately)	357 g ; 12.6 oz (With BP-306, antenna, MB-133)	

TRANSMITTER	
Output power (Hi/Low)	6 W/1 W
Max. frequency deviation	±5 kHz
Frequency stability	±10 ppm
Spurious emissions	–68 dBc typical

RECEIVER	
Sensitivity (at 12 dB SINAD)	0.25 μV typical
DSC receiver (at 1% BER)	–3 dBμ emf typical
AIS receiver (at 20% PER)	–107 dBm
Squelch sensitivity (Threshold)	0.25 μV typical
Adjacent channel selectivity	70 dB typical
DSC receiver (at 1% BER)	73 dBμ emf
AIS receiver (at 20% PER)	50 dB typical
Spurious response	70 dB typical
DSC receiver (at 1% BER)	73 dBμ emf
AIS receiver (at 20% PER)	50 dB typical
Intermodulation	70 dB typical
DSC receiver (at 1% BER)	68 dBμ emf
AIS receiver (at 20% PER)	50 dB typical
Hum and noise	40 dB
Audio output power	Internal SP 1500 mW typical (8 Ω load) External SP 350 mW typical (8 Ω load)

Measurements made in accordance with TIA/EIA-603. All stated specifications are subject to change without notice or obligation.

Applicable U.S. Military Specifications & IP Rating

Standard	MIL 810G	
	Method	Procedure
Low Pressure	500.5	I, II
High Temperature	501.5	I, II
Low Temperature	502.5	I, II
Temperature Shock	503.5	I-C
Solar Radiation	505.5	I
Rain Blowing/Drip	506.5	I, III
Humidity	507.5	II
Salt Fog	509.5	–
Dust Blowing	510.5	I
Immersion	512.5	I
Vibration	514.6	I
Shock	516.6	I, IV

Also meets equivalent MIL-STD-810-C, -D, -E and -F.

Ingress Protection Standard	
Water	IPX7 (Submersible protection)

Supplied accessories:

- BP-306 battery pack
- BC-251 battery charger
- AC adapter*
- CP-26 cigarette lighter cable
- MB-133 belt clip
- Antenna
- Hand strap
- * May differ depending on version.