

ROSSO E-QUAD R

ELECTRIC ATV



OWNERS MANUAL - EN

PRIOR TO FIRST USE, READ THIS MANUAL COMPLETELY AND ATTENTIVELY! IMPERATIVELY FOLLOW THE SAFETY INSTRUCTIONS!
NONOBSERVANCE CAN LEAD TO PERILOUS INJURIES! CAREFULLY KEEP THIS MANUAL!

PLEASE INSPECT YOUR EQUAD R UPON ARRIVAL AND REPORT ANY DAMAGES THAT MAY HAVE OCCURRED DURING SHIPPING



SAFETY INFORMATION



WARNING: Riding an electric ATV can be dangerous. Certain conditions or misuse may cause components to fail without fault of the manufacturer. Like other electric products, electric ATVs can and are intended to move, and it is therefore possible to lose control, fall off and/or get into dangerous situations that no amount of care, instruction or expertise can eliminate. If such things occur you can be seriously injured or die, even when using safety equipment and other precautions.



RIDE AT YOUR OWN RISK AND USE COMMON SENSE



This manual contains many warnings and cautions concerning the consequences of failing to maintain, inspect or properly use your electric ATV. Because any incident can result in serious injury or even death, we do not repeat the warning of possible serious injury or death each time such a possibility is mentioned.



APPROPRIATE RIDER USE & PARENTAL SUPERVISION IS REQUIRED



This manual contains important safety information. It is your responsibility to review this information and make sure that all riders understand all warnings, cautions, instructions and safety topics and assure that young riders are able to safely and responsibly use this product.

Rosso Motors recommends that you periodically review and reinforce the information in this manual with younger riders, and that you inspect and maintain your children's electric ATV to insure their safety. A parent's decision to allow his or her child to ride this product should be based on the child's maturity, skill and ability to follow rules.

Keep this product away from children too young to use it and remember that this product is intended for use only by persons who are, at a minimum, completely comfortable and competent while operating the product.

Persons with the following should be cautioned not to operate the ATV. Those with heart conditions, pregnant women, persons with head, neck, back or any mental or physical conditions that may make them more susceptible to injury, impair their physical dexterity or mental capabilities to recognize, understand, and perform all of the safety instructions and to be able to assume the hazards inherent in unit.

DO NOT EXCEED THE WEIGHT LIMIT OF 90 POUNDS. Rider weight does not necessarily mean a person's size is appropriate to fit or maintain control of the electric ATV.

Maximum Operating Speed of 8MPH

ALWAYS have parental/adult supervision while riding and instruction on the ATV's use prior to riding for the first time.

ALWAYS wear a helmet and proper riding gear.

ALWAYS Ride defensively. Maintain a hold on the handlebars at all times.

ALWAYS Be careful and know your limitations. Risk of injury increases as the degree of riding difficulty increases, The rider assumes all risk associated with aggressive riding activities.

ALWAYS watch out for potential obstacles that could catch your wheel or force you to swerve suddenly or lose control.

ALWAYS ride on private property or non trafficked areas and not on public streets or sidewalks.

ALWAYS ride off road. This ATV has tires designed for off road conditions, riding on concrete, asphalt or pavement will cause additional wear to tires.

ALWAYS check and obey any local laws or regulations which may affect the locations where the electric ATV may be used.

ALWAYS take extra care driving on bumpy, uneven, wet, icy or slick surfaces. Traction may be decreased and the ATV may be harder to control.

ALWAYS apply the brakes to control the ATV's speed when traveling downhill.

ALWAYS follow the battery care instructions & charge a min. of once a month if not in use.

ALWAYS perform the recommended inspections of the ATV prior to use to ensure all components and safety features, such as covers & guards, are in place and in proper working order.

AVOID twisting the throttle on the hand grip unless you are sitting properly on the electric ATV and in a safe, outdoor environment suitable for riding.

AVOID pedestrians, skaters, skateboards, scooters, bikes, children or animals who may enter your path, and respect the rights and property of others.

AVOID riding the electric ATV in wet or weather. Excess moisture in electrical components can lead to corrosion and damage.

AVOID riding at night or in low light conditions where you may not be seen or are able to see yourself.

NEVER ride your electric ATV in any areas where vehicle traffic is present.

NEVER touch the brakes or electric motor on your electric ATV when in use and/or immediately after riding as they can become very hot.

NEVER attempt or perform stunts. This ATV was manufactured for performance and durability but is not impervious to damage. Jumping or other aggressive riding can over-stress and damage the product, The rider assumes all risks associated with high-stress activity.

NEVER carry passengers or allow more than one person at a time to ride the electric ATV.

NEVER place fingers and other body parts away near the drive chain, steering system, wheels and all other moving components.

NEVER use headphones or a cell phone when riding.

NEVER hitch a ride with another product.

NEVER use near steps or swimming pools.

NEVER immerse the electric ATV in water, as the electrical and drive components could be damaged by water.

NEVER risk damaging surfaces such as carpet or flooring by use of an ATV indoors.

Proper riding gear

Always wear proper protective equipment such as an approved safety helmet, elbow pads and knee pads.

A helmet may be legally required by local law or regulation in your area.

A long-sleeved shirt, long pants and gloves are recommended.

Always wear athletic shoes (lace-up shoes with rubber soles), never ride barefooted or in sandals, and keep shoelaces tied and out of the way of the wheels, motor and drive system.

ATTENTION: Remove all contents from the shipping box/frame and retain until assembly is completed to prevent discarding smart parts accidentally. Ensure the ATV is off before assembling.

Assembly

- The ROSSO eQuad R requires minimum assembly. Please follow the instructions below in order to get your eQuad R assembled properly.
- An assembly video can also be found at <https://youtu.be/JpEG2dUaH6Y>

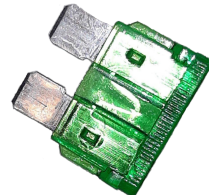
Please note that the assembly process for both eQuad R & eQuad T models is nearly identical so the model depicted in some images/videos may vary, however setup/assembly process depicted is the same.

1. Check hardware box contents

Charger



Spare Fuse (1 fuse pre-installed)



Handlebar Clamp



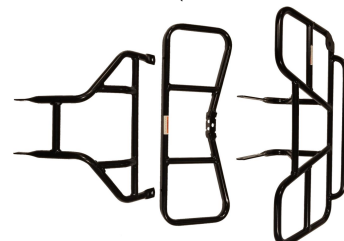
Fob w/ Ignition & Speed Keys



Tool Kit



Front & Rear Racks (SHIPS SEPARATELY)



2. Handlebar installation

⚠ **FAILURE TO PROPERLY ADJUST AND TIGHTEN BOLTS CAN CAUSE LOSS OF CONTROL RESULTING IN CRASHING AND INJURY** ⚠

Place handlebars into position on the bracket on the top of the steering column, cover with the top handlebar bracket and install the 4 included bolts, adjust handlebars to desired position, add nuts to each bolt and tighten all hardware. PLEASE NOTE: The gaps between the upper and lower clamps should be the same on both sides.



2. Racking installation

Packaged and shipped separately the front and rear racks attach to the frame of the eQuad. Locate the 2 pieces that comprise the front rack and attach them together and at the mounting points shown below and above the headlight with the included hardware. For the rear rack attach and secure to both sides of the frame located below the tail end of the seat as shown.



ATTENTION: Your eQuad R arrives only partially charged to maintain battery health and **must be fully charged prior to first use**. See the pg 5 for full details on charging.

3. Decal Application (colors vary by model)



(Please note labels indicate drivers (R)ight and (L)eft)

1 - Side Body (above footboards)
2 - Front Fender Flares

3 - Outer Rear Fender Flares
4 - Inner Rear Fender Flares

eQuad R Components



- | | |
|---|---------------------------------|
| (a) Right handle: Throttle | (g) Charging Port (right) |
| (b) Left handle: Brake Lever & Light/Horn switch | On/Off Indicator Light (left) |
| (c) Forward/Neutral/Reverse Switch | (h) 350W Motor |
| (d) Ignition Switch(right) & Controller(internal) | (i) Battery(internal), footrest |
| (e) Headlight | (j) front wheels |
| (f) Taillight | (k) rear wheels, brake |

(x) Connection port for LED Light-Up Flag Pole (sold separately)

eQuad R Operation

Basic Operation

With the ATV powered on, gently twist the throttle towards you until the desired speed is reached. Release the throttle and squeeze the brake lever to stop.

Charging

To charge your ATV first ensure that it is turned off (see page #7) Next plug the charger into the wall outlet, the light on the charger should illuminate. Finally plug the charger into the charging port located at the top of the battery box on the right side of the ATV below the body shell. The charging light should illuminate **RED** to indicate it is actively charging the battery, if it does not please contact customer service.



The time for a full recharge is approx. **4-6 hours**, the indicator on your charger will turn from **RED** to **GREEN** when charging is complete. Always charge the battery immediately after riding. Unplug the charger from the outlet & charging port once charging has finished.

Note: If the charger gets warm during regular use, this is a normal response and is no cause for concern. If your charger does not get warm during use, it does not mean that it is not working properly. Chargers have built-in over-charge protection to prevent the battery from being overcharged but prolonged heat from being actively connected may damage the charger.

Fully charge battery before storing for an extended period of time and then every 4-6 weeks. Failure to recharge battery periodically may result in reducing battery life time and can result in a battery that will not accept a charge.

To ensure long battery life, never store the product in temperatures above 70°F (21°C) or below 32°F (0°C) This may permanently damage the battery.

Battery run time is on average 60-120 minutes of usage. Run time may vary depending on riding conditions, rider weight, climate, and/or proper maintenance.

⚠ Failure to heed to following battery warnings may increase risk of potential injury ⚠

Charge the battery pack **ONLY** with the supplied charger or manufacturer certified replacement.

Examine the charger for damage to the cord, plug, enclosure and other parts. In the event of such damage, the ATV must not be charged until it has been repaired or replaced.

Do not leave charging overnight unattended. Unplug charger from the wall outlet and ATV when not in use.

Always use caution while charging. Batteries are only to be charged under adult supervision.

Always disconnect the charger before wiping down and/or cleaning the ATV.

Do not operate the charger near flammable materials or liquid.

⚠ Any changes or modifications to the unit unless expressly approved by the company responsible for compliance could void the users authority to operate the equipment ⚠

FCC instructions for battery charger:

This equipment has been tested and found to comply with the limits for a Class B digital device, pursuant to PART 15 of the FCC Rules. These limits are designed to provide reasonable protection against harmful interference in a residential installation. This equipment generates, uses and can radiate radio frequency energy and if not installed and used in accordance with the instructions may cause harmful interference to radio communications. However there is no guarantee that interference will not occur in a particular installation. If this equipment does cause harmful interference to radio or television reception, which can be determined by turning the equipment off and on, the user is encouraged to try to correct the interference by one or more of the following measures:

- Reorient or relocate the receiving antenna - increase the separation between equipment and receiver.
- Connect the equipment to an outlet on a circuit different from that which the receiver is connected to.
- Consult the dealer or an experienced radio/TV technician for help.

Turning the ATV OFF and ON

Your Rosso eQuad R can be turned on/off using **2** different methods. Once the ATV is started with that method it is locked into it and can only be operated that way until it is turned off with that same method. The ON/OFF indicator light on the left side of the ATV will be illuminated when the ATV is powered on.

PLEASE NOTE: Depending on the production date of your ATV you may not have an indicator light or you may have a switch style indicator light. For ATV's without the indicator, you can activate the horn manually or with the fob to determine if the machine is on. For ATV's with the switch style indicator, the position of the switch does not affect the ATV only the light function is utilized.

Ignition Switch







The ATV can be turned on manually by placing the key into the ignition switch (located on the right side of the ATV) and turning it to the IGNITION position. Once turned on manually, the ATV can **ONLY** be turned off by manually turning the key back to the OFF position. The fob will not function while the unit is manually turned on with the keys

Key Fob



The e Quad R also features remote start/stop via the included fob. Once the ATV has been turned on remotely it can **ONLY** be turned off with the fob.

	Double Press to turn the eQuad ON
	Press to turn the eQuad OFF
	Press to hear a single alarm chirp
	Press to hear repeating alarm chirp, press again to stop

PLEASE NOTE: The fob requires 1x CR2032 battery. (pre-installed) To replace the fob battery first remove the key ring from the fob, then carefully, with a small screwdriver, pry off the silver side pieces. Once they are removed the 2 halves of the black fob body can be separated revealing the interior components and battery slot. Once a new battery is installed, reassemble the fob in the reverse order.

Gear Shifter



F - Forward
N - Neutral
R - Reverse

To change between forward and reverse, while stationary, turn the gear shift knob, located on the body between the rider's legs, to the desired position. **Always bring the vehicle to a complete stop before changing gear, failing to do so will result in damage to the switch.**

Headlight/Horn switch

Located on the left handle bar the **green** horn button can be pressed to honk the horn. The **red** headlight switch is located directly beneath it and can be used to turn the headlight on and off.

Pre-Ride Checklist:

- ☐ **Brakes** - Check the brakes for proper function. When you squeeze the lever, the brake should remain stationary and slow down if in motion and the internal switch should disengage the motor. Do not ride if the brakes are not functioning properly
- ☐ **Tires** - Check tires periodically. Inspect tires for excess wear and replace as needed. (Please note riding on abrasive surfaces such as concrete or asphalt will increase tire wear.) Regularly check the tire pressure and inflate as needed. Recommended tire pressure is: 12-15 PSI

⚠ As tire pressure is key for safety and performance regular inspection should not be skipped. Do not over inflate! ⚠

- ☐ **Frame and Handlebars** - Check for loose, cracked or broken connections. Although broken frames are rare, it is possible for an aggressive rider to run into a curb or object and wreck, bend or break the frame.
- ☐ **Hardware** - Check and secure all fasteners (nuts, bolts) before every ride. If the unit is damaged, do not ride it.
- ☐ **Rider** - Always wear proper protective gear, such as an approved safety helmet. Elbow pads, knee pads, pants and long sleeves are recommended. Always wear closed toe shoes and keep shoelaces tied and out of the way of the wheels, motor and drive system. **NEVER RIDE BAREFOOT OR IN SANDALS.** Always check and obey any local laws or regulations.

⚠ Ensure that you are in a safe open area before you engage the throttle. Do not engage the throttle unless you are in a stable riding position with both hands on the handlebar controls. Always check and obey any local laws or regulations. Failure to follow instructions and inspections may damage the ATV or void your warranty ⚠

Maintenance and Care

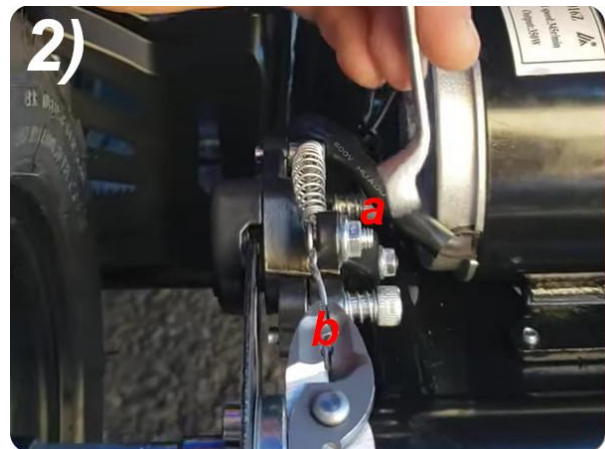
⚠ Ensure the power to the eQuad is turned off before performing any maintenance or cleaning ⚠

Brake adjustments

Not all riders will have the same hand strength and the brakes should be adjusted so the rider is capable of engaging them properly.

⚠ Failure to inspect and properly adjust brakes increases the risk of having an accident. Riding with worn brake pads can reduce braking performance and cause an accident. Check and adjust brakes if needed before each ride. ⚠

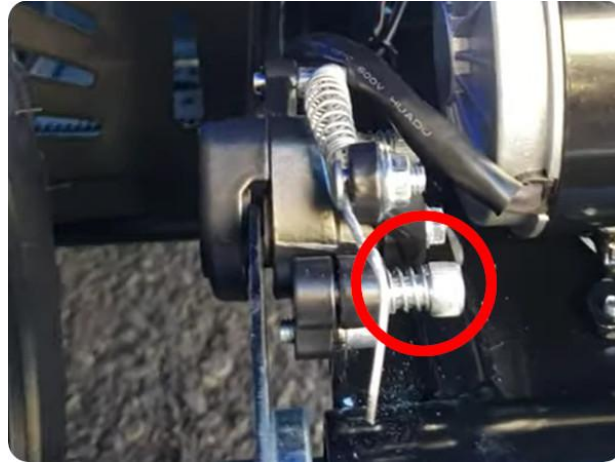
Step 1 - To adjust the brake cable turn the adjuster on the brake lever clockwise to loosen or counterclockwise to tighten. Only turn in small increments until desired adjustment is reached. If adjusting this way doesn't help and your brakes are still too tight or loose proceed to Step 2.



Step 2 - If your brake cable is still too loose after making adjustment at the lever you will need to manually adjust the length of the cable. Using a 10mm wrench loosen the nut securing the brake cable pinch bolt (a) and adjust the length on the cable (b), this may require pliers. Ensure the pinch bolt nut is securely fastened once the adjustment is made.

Brake adjustments continued...

Step 3 - If after adjusting the brake correctly, there is still brake rub, (contact between the brake disk and pad when the brake is not engaged) you can adjust the position of the caliper on the rotor with adjustment knob. Adjust the position and rotate the rear wheel manually until the wheel spins freely.



⚠ The brake may be capable of locking up, causing the rear wheels to skid, if not applied correctly. Always try to avoid skidding as this may result in loss of ATV control and damage to the rear tires. Practice breaking in an unobstructed open area to become familiar with braking function and performing smooth controlled stops. ⚠

Chain Maintenance

⚠ Before performing any maintenance on the chain ensure the motor has had enough time to cool. Do not touch the motor after use, it will/can be very hot. ⚠

Your ATV is chain driven and should be periodically lubricated with lithium spray. To do so, locate the screws securing the chain guard and remove them. Part the 2 sections of the guard to allow enough space to access the chain for inspection and lubrication. Reclose the guard and replace the screws. The chain may make clicking noises, this is normal.

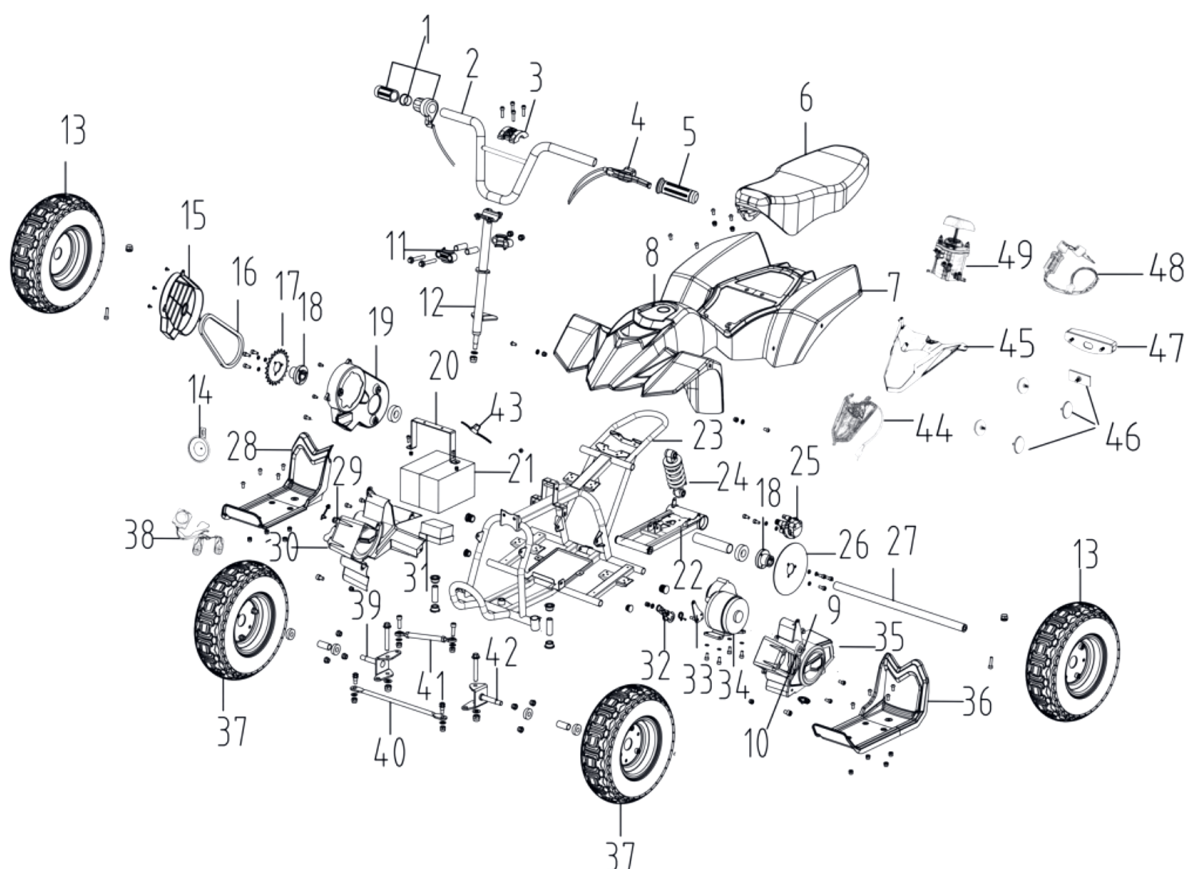
⚠ Riding with a chain in poor condition can lead to serious injury. ⚠

Troubleshooting

Problem	Possible Cause	Solution
eQuad will not run	eQuad not turned on	Turn eQuad On (see page #7)
	Battery not charged	Charge battery
	Loose connection	Check connections on the battery, controller & main switch
	Throttle failure	Check throttle connections or replace throttle
	Brakes are too tight	Adjust brakes
	Brake lever not released	Release brake lever
	Blown Fuse	Replace fuse
Low travel distance	Battery low/ not charged	Charge battery
	Low tire pressure	Inflate tires
	Over weight capacity	90lb recommended weight capacity
	Brakes are too tight	Adjust brakes
Battery not charging	No power at the outlet	Check power to the outlet
	Charger damaged (no lights)	Replace charger
	Loose or broken connection	Check connections
	Battery damaged or at end of life	Replace battery
Stops working suddenly	Automatic overload cutoff triggered	An excessive overload (eg: steep hill, heavy rider) may have caused the controller to automatically cut off power. Turn the ATV off and wait 15s. Before turning back on again.
	Fuse Blown	Replace fuse
	Remote button pressed by accident	Ensure buttons are not being pressed inside a pocket, bag, etc.
Making grinding or load noise when motor is running	Chain is dry	Lubricate chain
Quad Runs Slow	Brakes not adjusted	Adjust brakes
	eQuad Overload	Max weight 90lbs, do not use eQuad to tow
	Low tire pressure	Inflate tires
	Terrain too steep/rugged	Ride on less severe ground

The tips above are meant as an introductory guide for diagnosing and correcting basic eQuad issues. If the tips do not help or you are unsure of how to diagnose/fix an issue, please contact our technical support for assistance

eQuad R Parts Diagram



#	Part Description	#	Part Description	#	Part Description
1	Throttle assembly	18	Gear drive mount	35	Battery box (left side)
2	Handlebar	19	Chain guard cover (inner)	36	Foot rest (left)
3	Handlebar clamp	20	Battery lock	37	Front wheel
4	Brake lever	21	Batteries	38	Alarm
5	Left grip	22	Rear fork	39	Front axle (right)
6	Seat	23	Frame	40	Steering bar
7	Body	24	Shock absorber	45	Steering adjustment tube
8	Deck cap	25	Brake caliper	42	Front axle (left)
9	On/Off indicator	26	Brake Disc (rotor)	43	Fuse
10	On/Off indicator housing	27	Axle	44	Headlight
11	Stem tube clamp	28	Foot rest (right)	45	Head cover
12	Stem tube	29	Charging Port	46	Reflectors
13	Rear wheel	30	Battery box (right side)	47	Taillight
14	Loudspeaker	31	Controller	48	Ignition switch
15	Chain guard cover (outer)	32	Guide wheel	49	F/N/R switch
16	Chain	33	Tensioner mount		
17	Gear	34	Motor		

Warranty

ROSSO MOTORS warrants this product to be free of manufacturing defects for a period of 6 months from date of delivery. This Limited Warranty does not cover normal wear and tear, (tires, tubes or cables) or any damage, failure or loss caused by improper assembly, maintenance, storage or use of your **eQuad R Electric ATV**. Installation of all replacement parts provided, under this warranty, is the sole responsibility of the eQuad's owner.

This Limited Warranty voided if the product is:

- Used in a manner other than for recreation;
- Modified in any way;
- Rented.

ROSSO MOTORS is not liable for incidental or consequential loss or damage due directly or indirectly to the use of this product.

For more information on your warranty please see our FAQ section online: www.rossomotors.com/pages/faq

For any request regarding warranty, spare parts or replacement devices do not hesitate to contact us by phone or e-mail. Have your order number ready before contacting us.

E-Mail: hello@rossomotors.com - Tel: 1-888-897-5909



11400 Twigg Place Unit 1
Richmond, BC, V6V3C1
CANADA

E-Mail: hello@rossomotors.com
Website: www.rossomotors.com
Tel: 1-888-897-5909

© Rosso Motors, 2022. All Rights Reserved