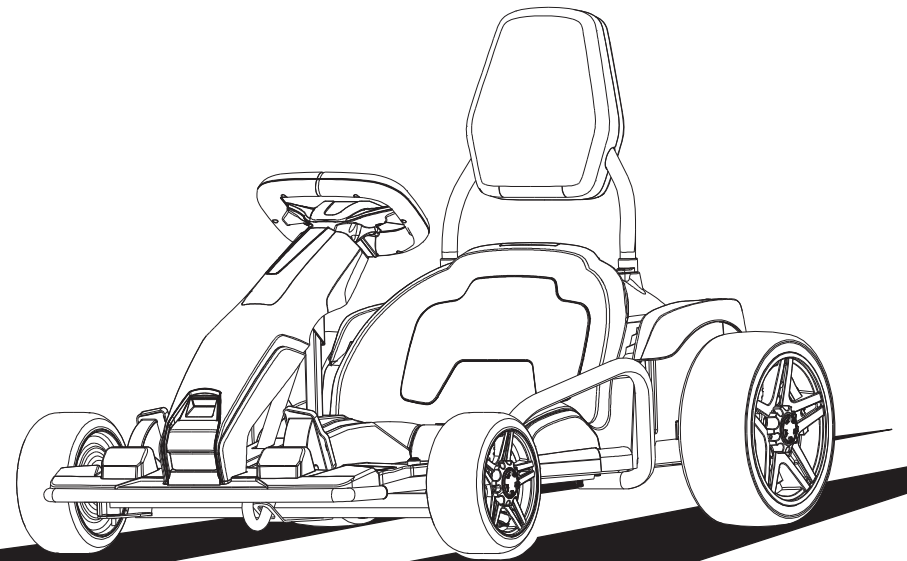


INSTALLATION AND OPERATING INSTRUCTIONS

Children's electric cars

Executive standard:
En71 and En62115
ASTM F963-17



M3(0933)


⚠ WARNING:

- Assembled by an adult.
- This toy was not suitable for Children under 6 years due to its maximum speed.
- RISK OF FIRE. Do not bypass. Replace only with original size and type.

Photos are for reference ONLY.

INSTALLATION INSTRUCTION

The illustrations in this instruction are used for easier understanding of the operation method of the product and the product structure. Please note there may be differences between the pictures and the physical item. In order to improve the quality, we may change part of the structure and appearance of the product without an advance notice.

 Please read the instructions carefully before use, it will tell you the right operation method and installation steps. Incorrect operation may damage the product, or even hurt your child. Please keep this instruction ready and easy to find.

Safety

WARNING

The owner's manual contains assembly, use and maintenance instructions. The vehicle must be assembled by an adult who has read and understood the instructions in this manual. Keep the packaging away from children and dispose of all packaging before use.

Note: For best performance use on flat, hard surfaces.




The following safety hazards may result in serious injury or death to the user of the vehicle:

- This product contains small parts that are for adult assembly only. Keep small children away when assembling. Remove and dispose of all protective material and poly bags before assembly. Be sure to remove all packaging materials and parts from underneath the vehicle body.
 - Battery posts, terminals and related accessories contain lead and lead compounds (acids) chemicals known to the state of California to cause cancer, reproductive harm, and are toxic and corrosive. Never open the battery.
 - Body parts such as hands, legs, hair and clothing can get caught in moving parts. Never place a body part near a moving part or wear loose clothing while using the vehicle. Always wear shoes when using the vehicle.
 - Do not leave a child unattended while using this toy or allow use of this toy in any location that requires braking capability, as this could result in a roll away or loss of control, which may cause serious injury or death.
 - Use of this vehicle near streets, motor vehicles, steps, bodies of water, sloped surfaces, hills, wet areas, flammable vapors, in alleys, at night, or in the dark could result in an unexpected accident.
 - Using the vehicle in unsafe conditions such as snow, rain, loose dirt, mud, sand or fine gravel may result in unexpected action such as tip over and skidding, and damage to the electrical system and battery.
 - Do not use the vehicle in an unsafe manner. Unsafe manner include but are not limited to:
 - a. Pulling the vehicle with another vehicle or similar device
 - b. Allowing more than one rider
 - c. Pushing the user from the back
 - d. Traveling at an unsafe speed
- Always use common sense and safe practices when using the vehicle.

BATTERY WARNINGS

WARNING

The following safety hazards may result in serious injury or death to the user of the vehicle:

-  • Use of a battery or charger other than the supplied 24V rechargeable battery and charger may cause a fire or explosion. Only use the supplied 24V rechargeable battery and charger with the vehicle.
-  • Using the 24V rechargeable battery and charger for any other product may result in overheating, fire or explosion. Never use the 24V rechargeable battery and charger with another product.
-  • Explosive gases are created during charging. Charge the battery in a well ventilated area. Do not charge the battery near heat or flammable materials.
- Contact between the positive and negative terminals may result in fire or explosion. Avoid direct contact between the terminals. Picking up the battery by the wires or charger can cause damage to the battery and may result in a fire. Always pick up the battery by it's case or handles.



- Liquids on the battery may cause fire or electric shock. Always keep all liquids away from the battery and keep the battery dry.
- Contact or exposure to battery leakage (lead acid) may cause serious injury. If contact or exposure occurs immediately call your physician. If the chemical is on the skin or in the eyes, flush with cool water for 15 minutes. If the chemical was swallowed, immediately give the person water or milk. Do not give water or milk if the patient is vomiting or has a decreased level of alertness. Do not induce vomiting.
- Battery posts, terminals and related accessories contain lead and lead compounds (acid), chemicals known to the State of California to cause cancer, reproductive harm and are toxic and corrosive. Never open the battery.
- Tampering or modifying the electric circuit system may cause a shock, fire or explosion and permanently damage the system. Exposed wiring, circuitry in the charger may cause electric shock. Always keep the charger housing closed.

RECHARGE INTERVAL AND TIME Important!

- Damage to the battery may occur if it is allowed to drain completely. Do not allow the battery to drain completely.
- Check the battery and charger (supply cord, connector) for wear and damage before charging. Do not charge the battery if damage has occurred.
- On average you will need to charge the battery between 8 and 12 hours.
- Do not charge the battery for more than 20 hours. Failure to charge the battery as directed could cause permanent damage to the battery and void the warranty.
- Only an adult who has read and understood the safety warnings should handle, charge and recharge the battery.

Before using the vehicle the child should understand the vehicle controls and safety issues. They must also demonstrate the capability to handle the vehicle and operate its controls. It is the responsibility of the adult to educate the child and supervise the vehicles use. Read the following safety warnings to any child using the vehicle before riding.

WARNING

- This toy was not suitable for Children under 6 years due to its maximum speed.
- To reduce the risk of injury, adult supervision is required.
- Never use in roadways, near motor vehicles, on or near steep inclines or steps, swimming pools or other bodies of water; always wear shoes, and never allow more than 1 rider(s)
- Protective equipment should be worn. Not to be used in traffic.
- Do not drive the vehicle into loose dirt, mud, sand or fine gravel and Only drive on level ground
- Always wear shoes when using the vehicle.
- Keep your hands, hair and clothes away from moving parts.

USER REQUIREMENTS AND WARNINGS

Age	6+
Max Weight	(60kgs)

CARE WARNINGS

WARNING

- Park the vehicle indoors or cover it with a tarp to protect it from wet weather.
- Do not leave the vehicle in the sun for long periods of time or fading may occur. Store in shade or cover with tarp.
- Do not wash the vehicle with a hose.
- Do not wash the vehicle with soap and water.
- Pay attention while driving the vehicle, avoid falls or collisions causing injury to the user or third parties.
- Please check the component parts before using, and make regularly examine the transformers or battery chargers for in the event of any damage on the cord, plug, enclosure and other parts, the vehicle shall not be used until the damage has been repaired, to avoid an accident.

Specification

Name	specification
Battery	24V 10Ah*1
Motor	DC 24V*2
Suitable age	6+
Max weight	60KG
Body size	124CM*82CM*75CM
Speed	12km/h
Hours of use	charging 8-12 hours using 1 to 2 hours
Charger	Input: 120-240V AC Output: DC 24V1000mA-1500mA
Main material	PP(polypropylene) and iron

*The above parameters contain optional features, specific parameters please refer to our samples.

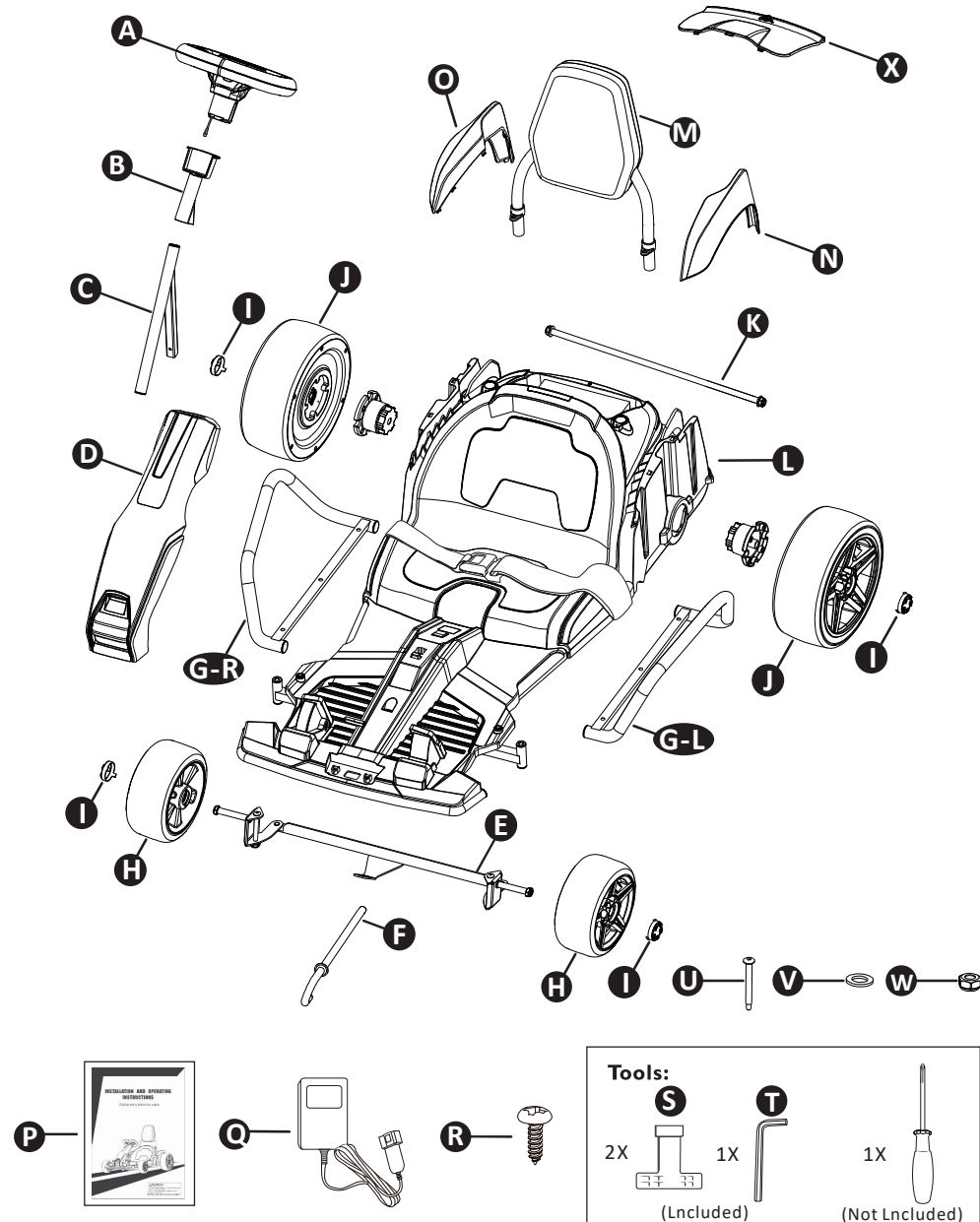
Parts List

NO.	PART NAME	Q'ty(pcs)	REMARKS
A	Steering wheel	1	
B	Steering axle sleeve	1	
C	Steering axle support	1	
D	Front cover	1	
E	Front axle	1	
F	Steering axle	1	
G-L	Bumper - L	1	
G-R	Bumper - R	1	
H	Front wheel	2	
I	Wheel cover	4	
J	Rear wheel	2	
K	Rear axle	1	
L	Car body	1	
M	backrest	1	
N	Fender - L	1	
O	Fender - R	1	
P	Instruction book	1	
Q	Charger	1	
R	Screw	4	install M(backrest), D(Front cover)
S	M8 spanner	2	rotate the M8 nut at front and rear axle
T	Allen key	1	rotate the screw at E(front axle)
U	Screw	2	install E (Front axle)
V	Gasket	2	install E (Front axle)
W	M8 nut	2	install E (Front axle)
X	Back cover	1	

Parts List

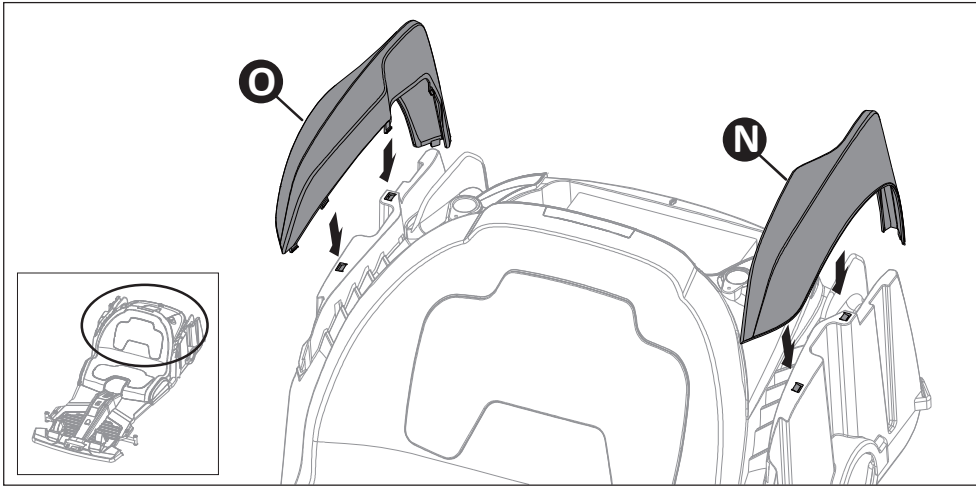
Parts diagram

All items on this page are included in this vehicles packaging.



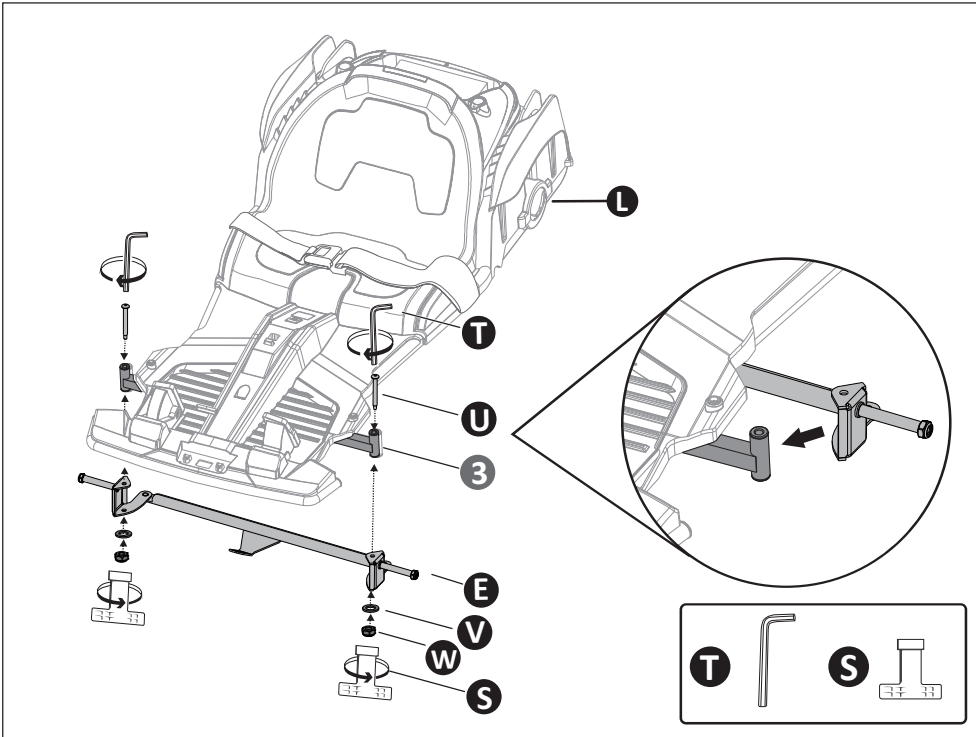
Note: Some parts are installed on both left and right sides of the vehicle.

Assembly



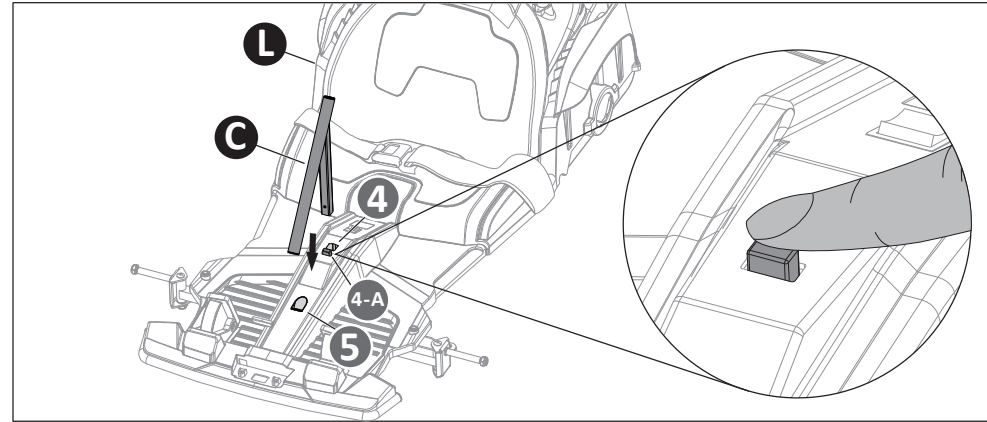
Step 1: Install fender

Install N (left fender) and O (right fender) on the body as shown in the figure.



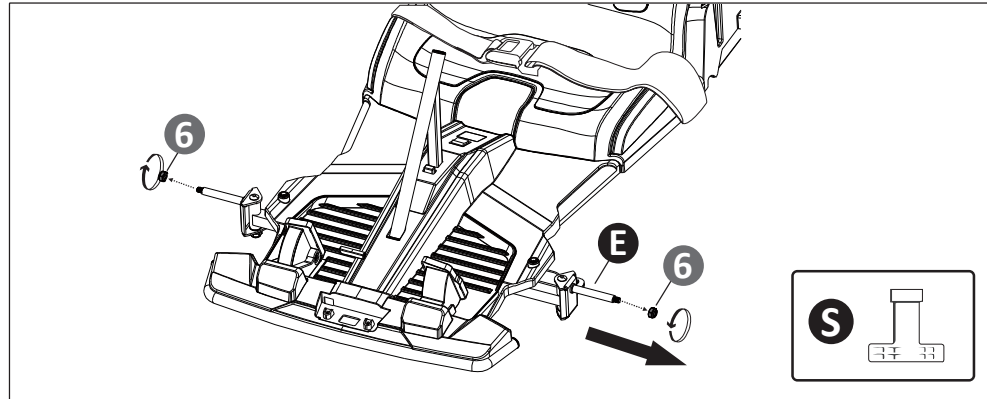
Step 2: Install front axle

2. Lift the L (car body) and place the E (front axle) in position 3 of the L(car body), then pass the U (screw) through the E.
3. Put V (gasket) to U(screw), tighten with W (M8 nut) finally.



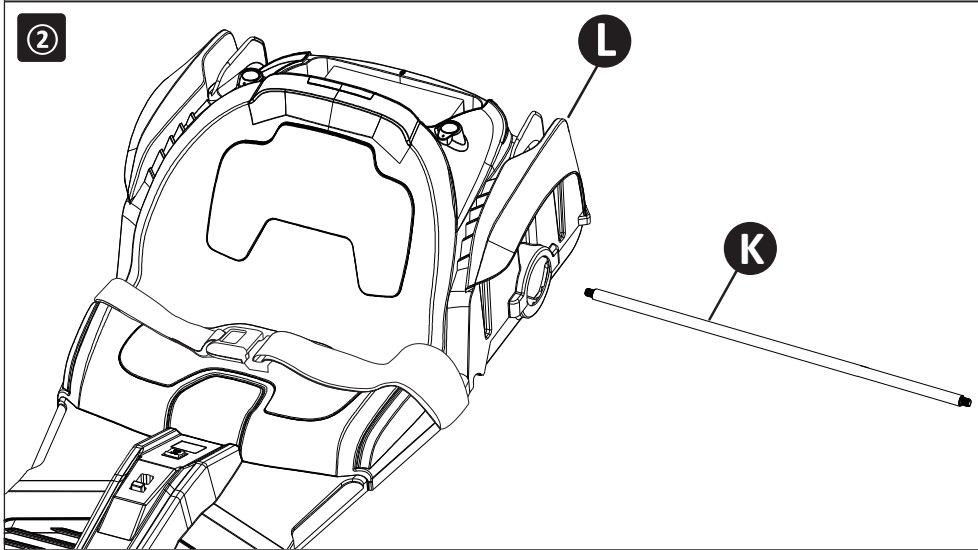
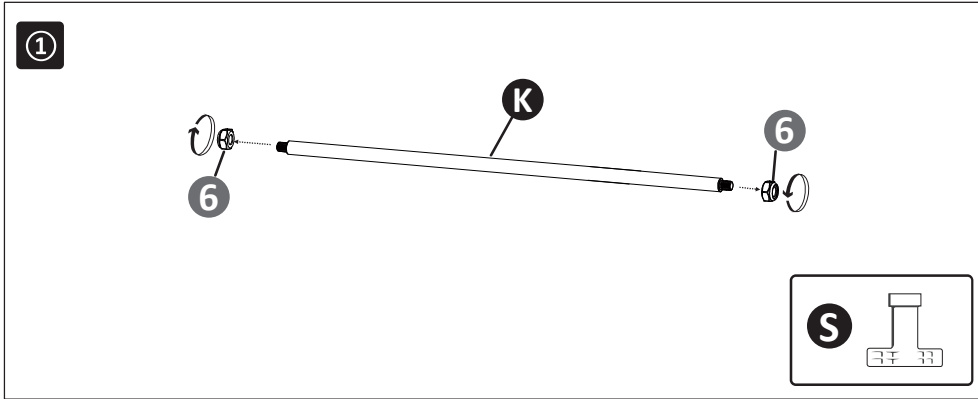
Step 3: Install steering axle support

Put the C (steering axle support) align with the 4 square hole and 5 round hole of the L (car body) , in the meantime press down the 4-A switch, then insert the C down into place.



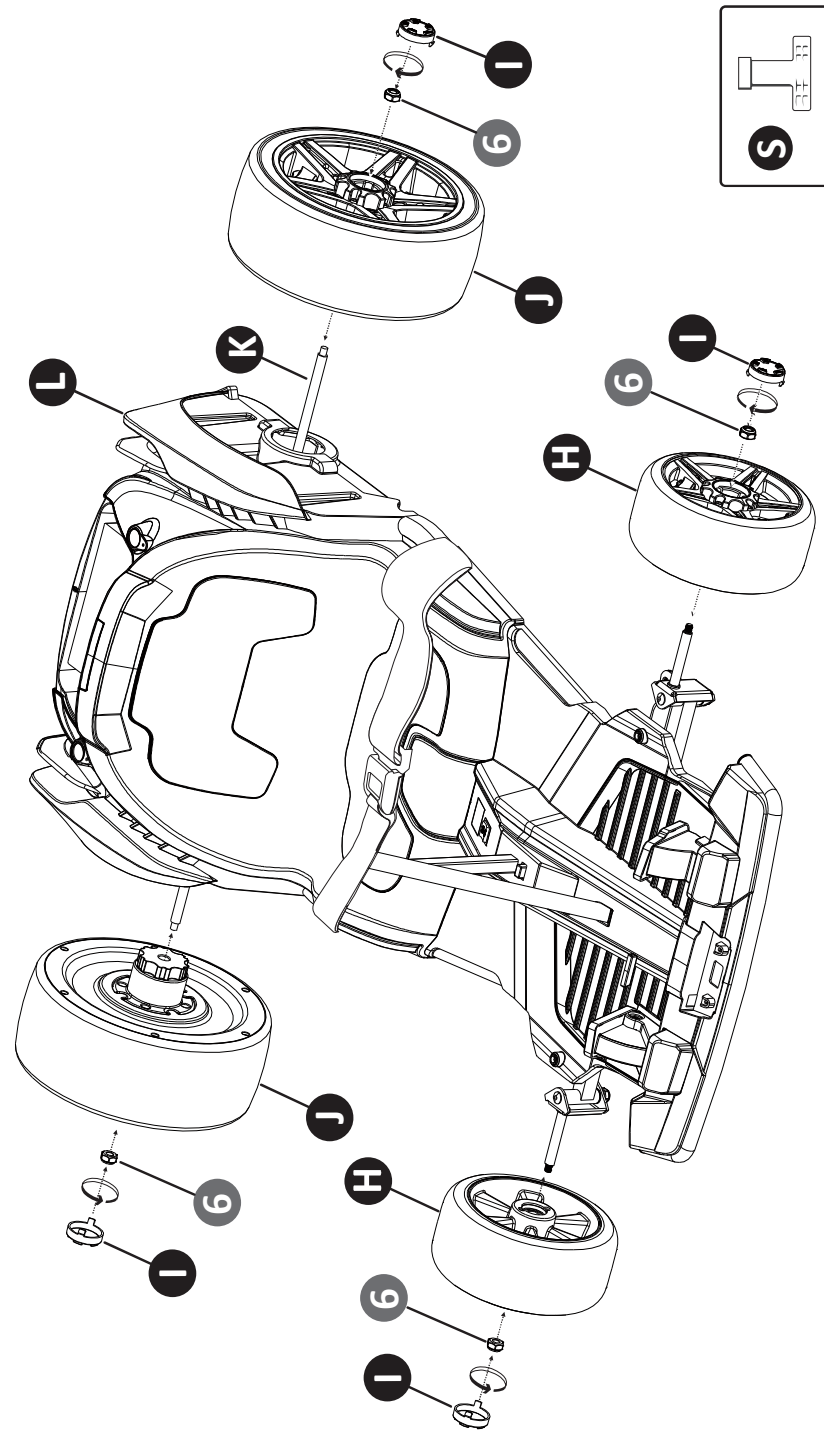
Step 4: Remove front axle gasket, Nut

Use U (M8 spanner) to loosen 6 (M8 nut) in counterclockwise direction.



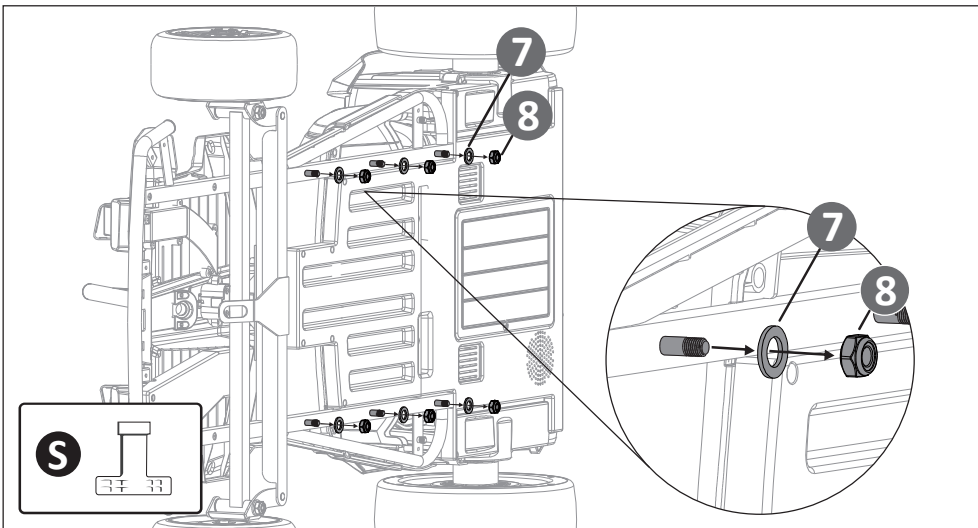
Step 5: Install rear axle

1. Use U (M8 spanner) to loosen two pieces of 6 (M8 nut) on the K (rear axle).
2. Insert the K (rear axle) into the L (car body) as shown in the diagram to ensure that both sides remain the same length.



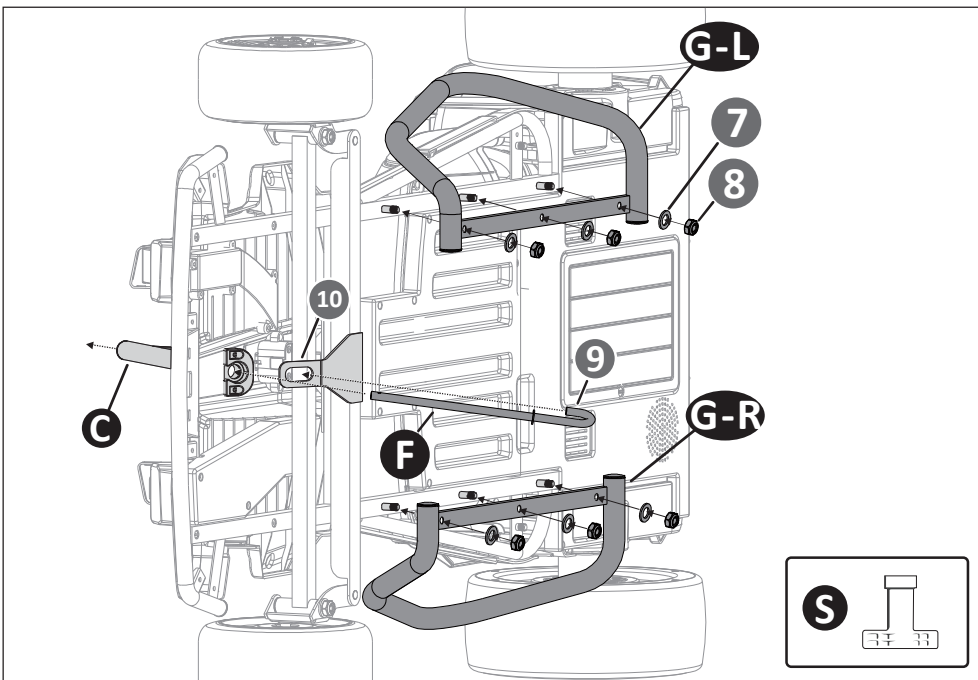
Step 6 : Install wheels

1. Install rear wheel: first install 2 pieces of J (rear wheel) on the left and right sides of the K (rear axle), use U (M8 spanner) to install 6 (M8 nut) on the rear axle, and finally install I (wheel cover) on the J (rear wheel)
2. Install front wheel: same installation method as for rear wheel.



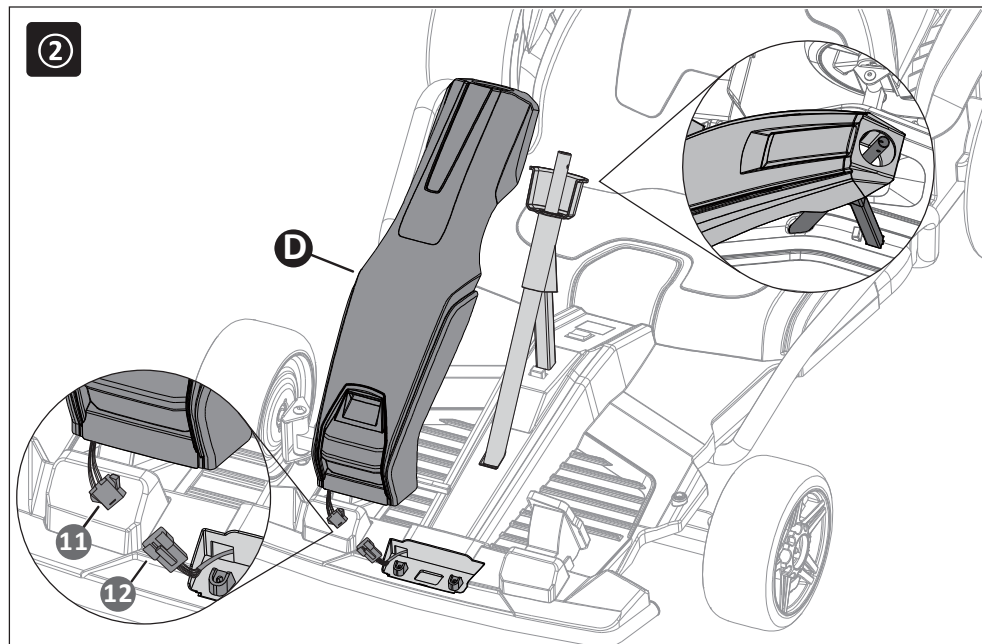
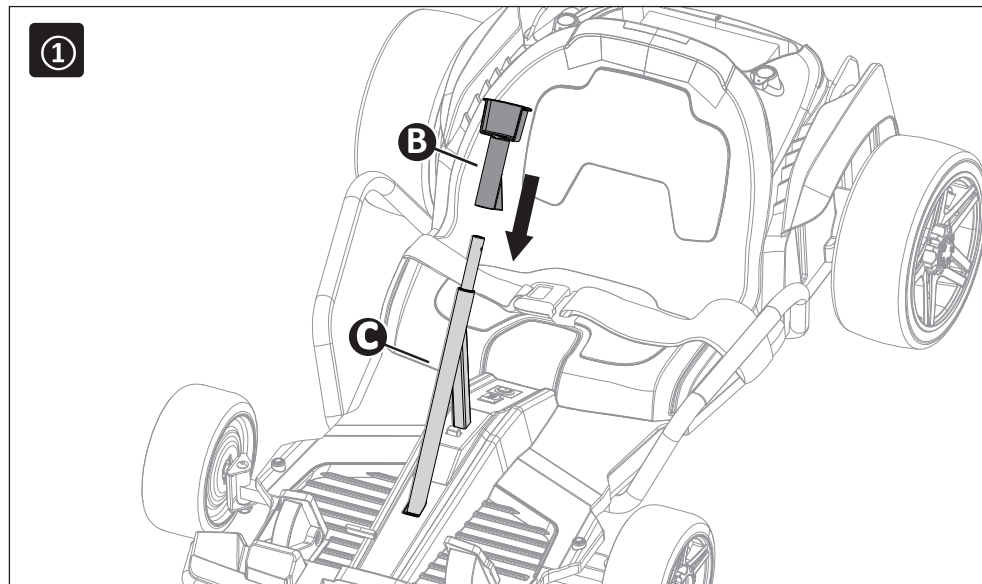
Step 7: Remove front axle gasket, Nut

First turn the car body over as shown. Use U (M8 spanner) to loosen 8 (M8 nut) in counterclockwise direction. Then remove the 7 (washer).



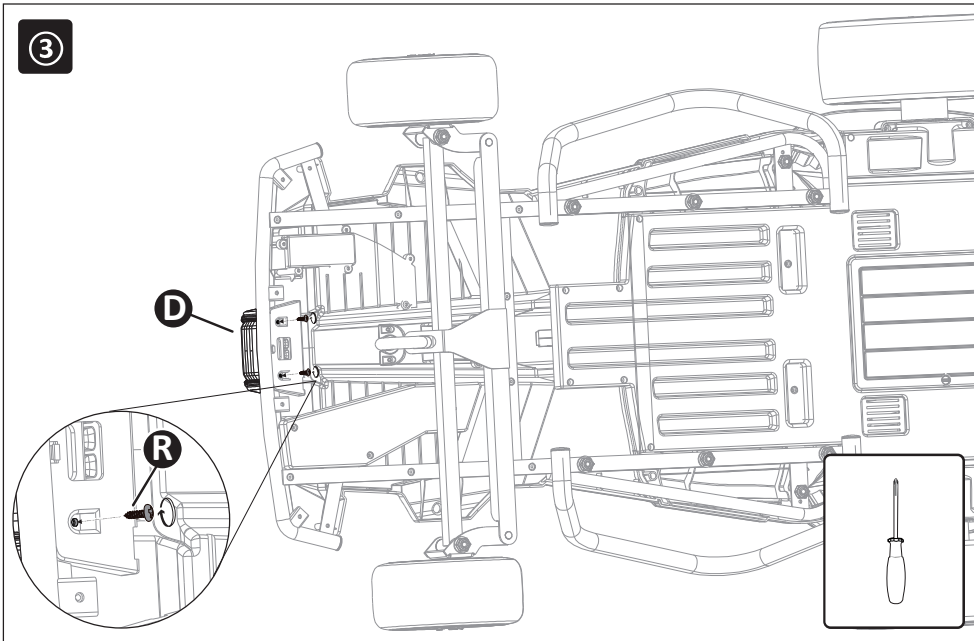
Step 8: Install rear axle

1. First, install G-L on the three screws of the body as shown in the figure, then secure with 7 (washer) and 8 (nut). Repeat on the other hand (G-R).
2. Insert F (steering axle) through 10 and C (steering axle support), (The 9 rod of F inserted into the 10 hole).

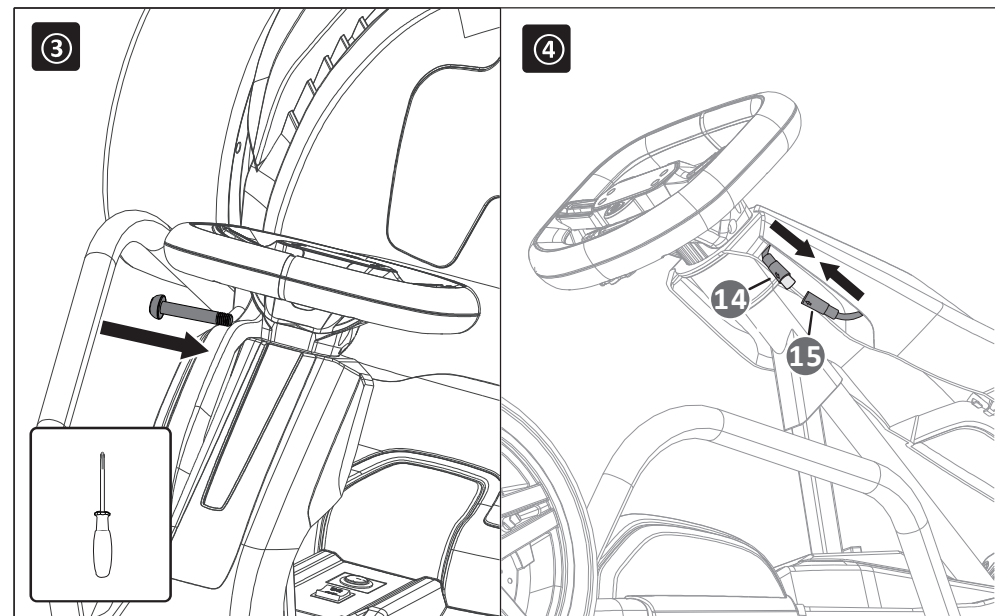


Step 9: Install Front cover

1. First put B (steering axle sleeve) on C (steering axle support).
2. First, connect the terminal 11 on D (front cover) to terminal 12 on the car body, then install D (front cover) on the car body and the steering axle as shown in the figure.

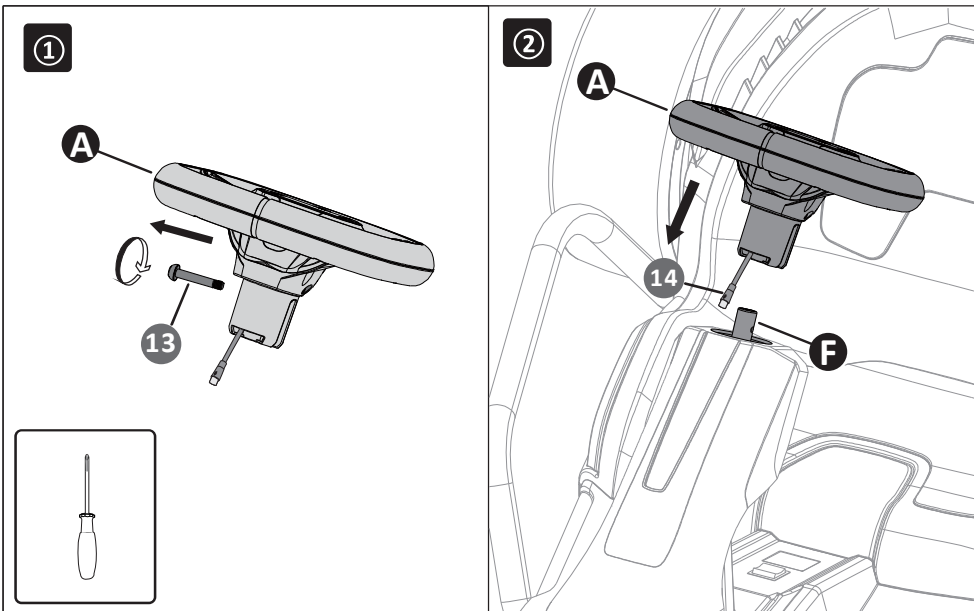


3. First turn the car body over as shown, use 2 R(screw) to install the D (front cover).



3. Install 13 (screw) onto A (steering wheel) as shown in the figure.

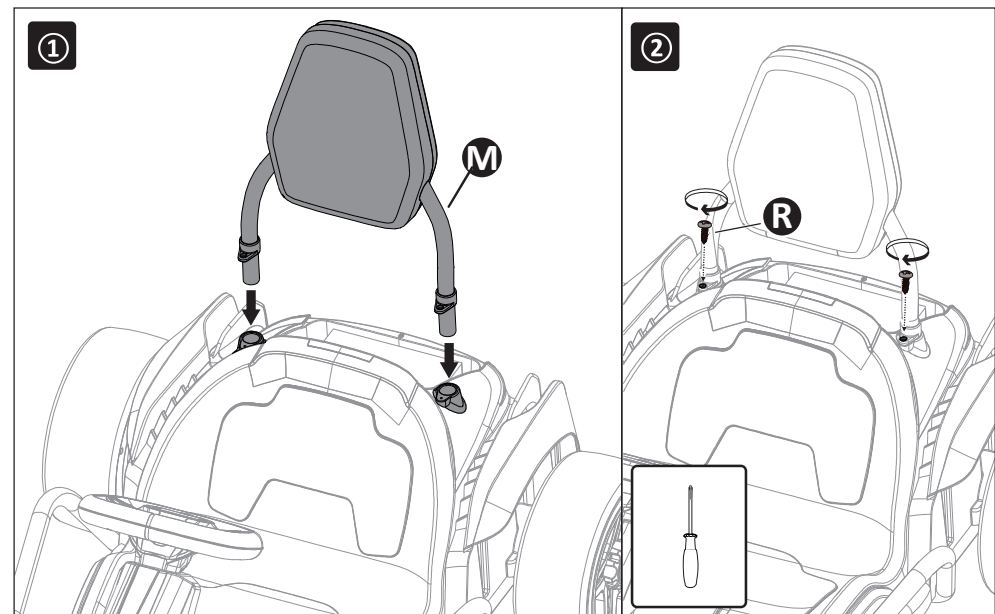
4. Connect the terminal 14 of the steering wheel to the terminal 15 of the car body.



Step 10: Install Steering Wheel

1. First, use screwdriver to unscrew 13 (screw) from A (steering wheel) by anticlockwise.

2. Insert the terminal 14 into the hole on the front cover, then install the A (steering wheel) onto the F (steering axle).

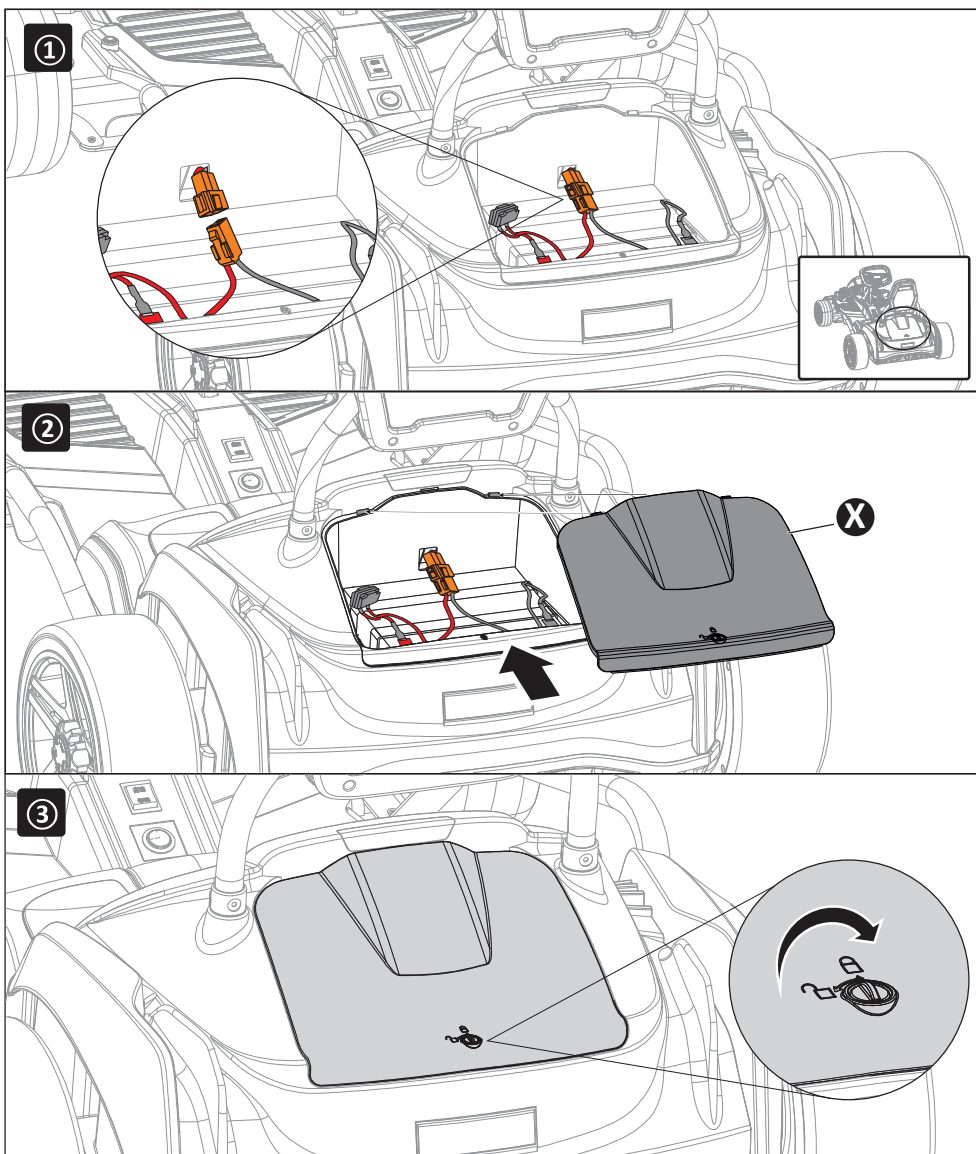


Step 11: Install the air intake seat

1. Insert M(backrest) into two grooves of the car body.

2. Secure the M(backrest) with 2 R(screw).

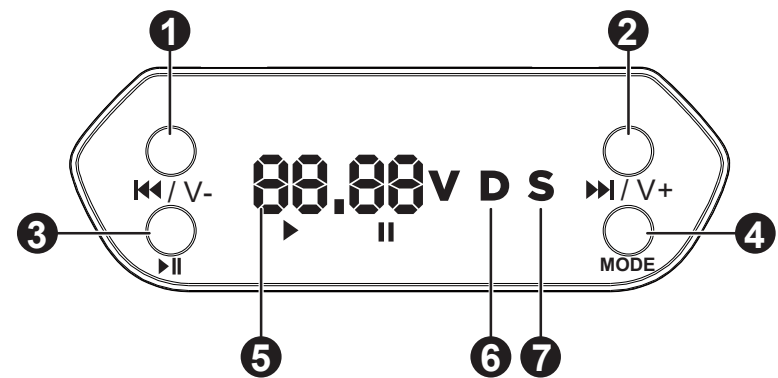
Power on



Connect the two orange terminals. Finally, cover the x(back cover) and tighten it by clockwise the lock catch.

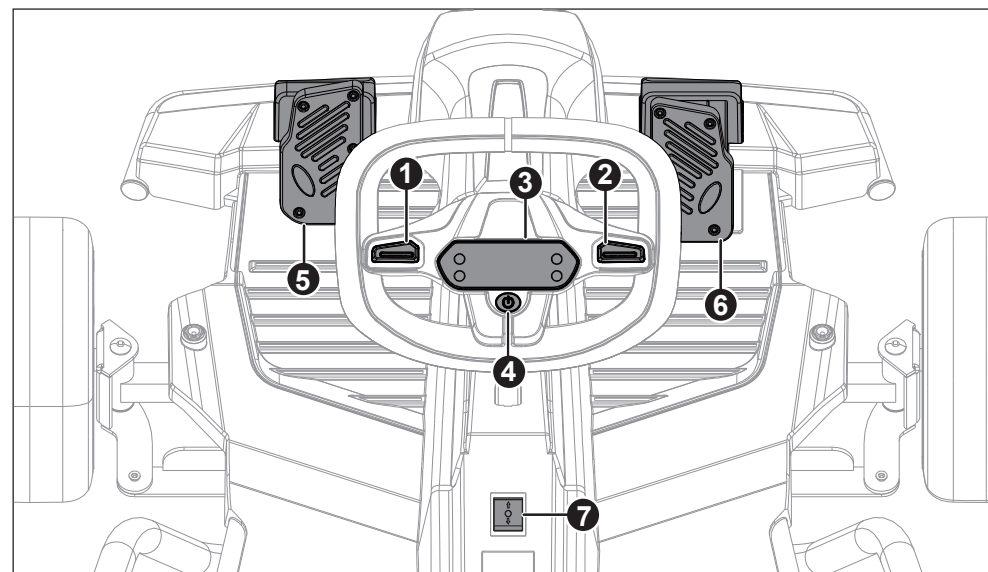
Operation

1. Multimedia Instructions



p.s 1-4 is inductive switch.

- 1. ◀/V-** Previous /VOL down: short press to play the last channel, long press to lower the volume.
- 2. ▶/V+** Next channel / Volume up: short press to play the next channel, long press to increase the volume.
- 3. ▶||** Short press to play/pause music, In FM mode, Long press to automatically seek a radio station.
- 4. MODE:** Switch between Music, FM, Bluetooth: Press this button can switch between different play modes (Music, FM, Bluetooth)
- 5. Voltage display:** can display the voltage.
- 6. Low speed indicator light:** This light will light up in low speed mode
- 7. High speed indicator light:** This light will be on in high speed mode



2. Instruction of User Switches and Buttons

1. Low speed button: The low speed indicator light on, the car is in low speed mode.
2. High speed button: the high speed indicator lights on, the car in high speed mode.
3. The display screen
4. Power switch: Long press for 3 seconds to power on/off
5. Brake: press the brake to brake the car.
6. Gas pedal : Press the gas pedal forward/reverse, release the gas pedal ,the car will come to a gradual stop.
7. Forward and reverse switch

3. Direction for use

1. Forward/reverse switch is an inductive switch: when the finger is placed on the groove, the forward/reverse mode is automatically switched. When the forward indicator light (blue light) is on, it is forward mode, and when the reverse indicator light (red light) is on, it is reverse mode.
2. FM radio function: press button 4 (mode) to enter the FM mode; Long press 3 (▶▶|) to automatically seek a radio station., This process takes a while to automatically search the station and save. When the search is complete, the car will automatically play the first radio station. Short press button 2 (▶▶| /V+ button), will play the next channel; short press button 1 (|◀◀/V- button), will play the last channel; Long press button 2 (▶▶| /V+ button), will increase the volume; long press button 1 (|◀◀/V- button), will lower the volume; short press button 3 (▶▶| button), can stop playing, short press this button again, can restart play it.
3. Bluetooth:
Step 1: Place your desired audio device near the media player and press the car's power button.
Step 2: Press "Mode" on the media player and wait until you hear the cue voice.
Step 3: On your desired audio device, locate the Bluetooth settings and select the device named "ROSSO".
Step 4: There is a tip tone once the frequency is succeeded, select the desired song.

4. Operation guide for Manual control (Forward, Reverse):

Driver sit down and fasten the seat belt. Long press the Power switch , the display light is on, default is forward mode, Press the gas pedal, the car will move forward, release the gas pedal, the car will stop. Press the brake ,the car will stop. The forward/reverse switch switch to the reverse mode, the car will move backward, release the gas pedal, the car will stop. Long press the power switch again to turn off the power.

5. The illustration of High/Low Speed:

Power on, default is forward high speed mode, When the screen shows "S", press the gas pedal, the car will forward fast ,release the gas pedal, the car will stop, press the low speed button on the steering wheel , switch to low speed mode ,When the screen shows "D", press the gas pedal, the car will forward at a slower speed ,release the gas pedal, the car will stop. Press the high speed switch again, will switch to high speed mode.

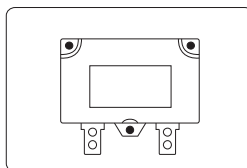
* **ONLY one speed for reverse, the high/low switch can not control the reverse speed. Everytime when power on, by default, the car will move forward in high speed.**

6. Instructions of the recoverable fuse

Resettable fuse: when the current exceeds a certain rating, the recoverable fuse will automatically cut off the power supply for 5-60seconds, then the current will be resupplied.

⚠ WARNING

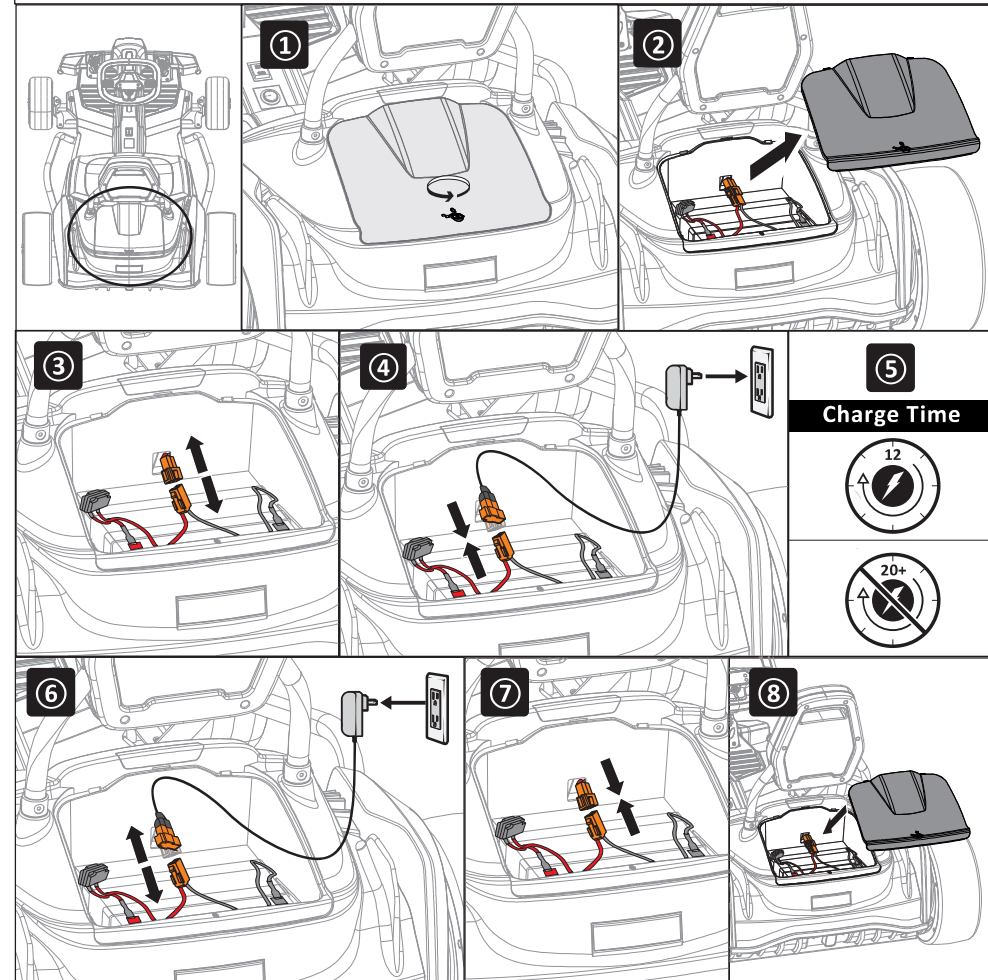
RISK OF FIRE. Do not bypass fuse. This may overload and damage the electrical system. Replace only with original size and type.



Charging Instructions

⚠ WARNING!

Please plug wall charger directly into a wall outlet. Do not use an extension cord.



Charge Time



When the battery is low, please charge it immediately.

1. Locate the back cover of the car and use tool to unscrew it by counterclockwise the lock catch.
2. Take off the back cover as shown in figure.
3. Press the hook to disconnect the power supply terminal.
4. Connect the charger terminal to the power supply terminal.
5. It can be fully charged within 12 hours (note: Charge it for no more than 20 hours).
6. Firstly please unplug the charger plug out of the socket, then Unplug the charger terminal.
7. Connect the power supply terminal
8. Put the back cover on as shown in figure, then tighten it by clockwise the lock catch. (note: this toy cannot be operated, under charging and should be charged by adults)

Troubleshooting Guide

Fault type	Reason analysis	Trouble elimination methods
The motor does not rotate	<ol style="list-style-type: none"> 1. Is the fuse overloaded? 2. The pedal switch connector is good? 3. The welding of motor electric terminal is good? 4. The connector of the motor wire is good. 5. Remove the motor's plug-in, change to connect battery directly, then check if it rotate or not. 	<ol style="list-style-type: none"> 1. Yes, the fuse cuts off the power automatically by 5-20 seconds, then restart; No, check next reason analysis 2.No, repair foot switch ; Yes, check next reason analysis 3. No, weld the terminal wire ; Yes, check next reason analysis 4.No, plug in the plug-in ; Yes, check next reason analysis 5. Still no rotation, change the motor; If rotates, it means driving circuit board needs professional maintenance, please contact with agent
Only move frontwards, or only move backwards	<ol style="list-style-type: none"> 1. Check the forward/backward switch, check the connector is good or not by multimeter 2. Check the drive line cycle of forward/bckwards is workable or not? 	<ol style="list-style-type: none"> 1.No, replace the control board; Yes, check next reason analysis 2.No, connect the line; Yes, it means driving circuit board needs professional maintenance, please contact with agent
slow speed	<ol style="list-style-type: none"> 1. Check the battery voltage is ok or not. 2. Connect the motor (including the driving gearbox) to the battery, then check the speed can be accelerated or not. 	<ol style="list-style-type: none"> 1.No, charger the battery ; Yes it's ok, check next reason analysis 2. No, check next reason analysis ; Yes, it means driving circuit board needs professional maintenance, please contact with agent
The battery can not be recharged	<ol style="list-style-type: none"> 1. The battery connector fall off or loosened. 2. The charger has a slight heat when it is charged 	<ol style="list-style-type: none"> 1. Yes, reconnect it, No, check next reason analysis 2.No, the charger is broken, replace it
When car is moving, the sound and light are useless	<ol style="list-style-type: none"> 1. check the sound/light switch is ok or not. 2. check the electric wire connection (from battery to headstock) is good or not? 	<ol style="list-style-type: none"> 1.No, replace the control board; Yes, check next reason analysis 2. No, reconnect; Yes, check next reason analysis
When wheel running, the car does not move	<ol style="list-style-type: none"> 1. check the driving wheel can be rotated or not? 2. Check the gearbox, if any gear is damaged? 	<ol style="list-style-type: none"> 1. Yes, lay the wheel to the ground; No, checks the next reason analysis 2. Yes, replace the gear box; No, checks the next reason analysis
Car is unstable, moving on and off	<ol style="list-style-type: none"> 1. Does the driver exceed the maximum load weight? 2. Does the driver ride on the rugged road? 3. Check the wheel can rotate freely? 	<ol style="list-style-type: none"> 1. Yes, should follow the instruction, the car unsuitable for exceed max weight; No, check the next reason analysis. 2. Yes, should follow the instruction, ride on the flat cement road; No, check the next reason analysis.No; Troubleshooting wheel and axle. 3. Slightly loosen wheel axle nut if the wheel does not spin freely.