

C545 SUPPORT ARM INSTRUCTIONS

The Swan-Matic C545 Capper Support Arm makes handheld capping easier. The arm provides users an extreme level of comfort and increases productive capacity at low cost. The Support Arm ensures operator comfort by alleviating the burden of holding a tool for extended periods of time. The arm also features the ability to limit the degrees of swing, facilitating precision placement and increasing repeatability rates. Though the C545 is designed to work with our line of handheld cappers, it can be used to hold a variety of handheld tools. A slight clamp modification is needed for the Swan-Matic C520 air operated handheld capper.

Max. Motor Torque	120 in. lbs	(13.6 Nm)
Max. Tool Weight:	10 Lbs.	(4.5 Kg)
Working Range:	8" to 28"	(20 to 71 cm)
Rotation Range	360 °	

A Swivel Attachment can be added to the motor mount for use at various angles. Assemblers come complete, ready to mount and include: Arm, Adjustable Tool Clamp [holds 1"- 2" (25.4-50.8 mm) diameter capper] and Adjustable Mounting Bracket.

Installation:

1. Drill and tap four (4) 3/8-16 X 1" bolt holes on a smooth, flat table or work bench. If mounting on a wood surface, use comparable carriage bolts.
2. Secure the base mount with the appropriate bolts
3. Adjust the collar on the post of the base mount to reach the desired height for the unit.
4. Slide the unit onto the post.
5. The unit is counterbalanced to accommodate the proper capper weight. If adjustments are needed, please refer to the enclosed *Counterbalance Adjustments Sheet*.

Maintenance:

Monthly lubrication is recommended. Do not allow the rear mount to become contaminated by dirt or foreign materials. If contamination occurs, clean the bore of the rear mount and the shaft of the rear post thoroughly. Lubricate the post through the grease fitting located on the rear mount.

Periodically check all fasteners and hardware.

In USA: Automation Devices Inc.

7050 West Ridge Road
Fairview, PA 16415-2099
Phone: 814-474-5561
Fax: 814-474-2131

Web Site: www.autodev.com Email: sales@autodev.com

In Canada: Automation Devices (Canada) Ltd.

4700 Montrose Road
Niagara Falls, Ontario L2H 1K3
Phone: 905-354-3881
Fax: 905-354-4072

Email: sales@adlcan.com

TROUBLESHOOTING

1. The arm does not balance or adjust to support the tool weight.

- a. Replace a worn cylinder
- b. The unit was counterbalance for a specific weight prior to order, when changing tools it may be necessary to change the cylinders to accommodate the new tool weight. Contact the factory for proper replacement cylinder information.

2. The arm movement is too stiff.

- a. Check fasteners and hardware. They cannot be over tightened.
- b. Adjust the arm stop, it should turn freely. (See Figure 1)
- c. Dirt or foreign material may have built up in the arm pivot points; use an air gun to blow all foreign material out.
- d. Check counterbalance adjustment.

FRONT CYLINDER REPLACEMENT

F1. Adjust front cylinder turning socket head screw on the adjuster until the pin of the adjuster reaches the lowest position in the slot on the top plates.

F2. Hold the front arm securely. Remove the arm screws on the front plates so that the front arm is free and access to the front cylinder can be made.

F3. Once the screws are removed, slowly guide the front arm up to the fully extended position as indicated on the diagram. This removes all tension from the cylinder. **CAUTION!! Care must be exercised when taking the arm apart!**

F4. Remove the stripper bolt attaching the cylinder to the arm.

F5. Unscrew the cylinder from the end fitting attached to the tube end of the old cylinder.

F6. Remove the end fitting from the tube end of the new cylinder. Use care not to damage or scratch the cylinder rod. Dents or scratches on the cylinder rod will cause the nitrogen gas to leak and result in the need for another cylinder.

F7. Place Loctite 242 (blue removable) on the threads of the tube end and screw the new cylinder into the end fitting attached to the adjuster.

F8. Replace the stripper bolt attaching the cylinder to the arm.

F9. Reassemble the front arm and plates with the front arm screw. Be certain that all fasteners are secured.

*Contact Swan-Matic for technical support at
1-814-474-5561*

In USA: Automation Devices Inc.

7050 West Ridge Road
Fairview, PA 16415-2099
Phone: 814-474-5561
Fax: 814-474-2131

Web Site: www.autodev.com Email: sales@autodev.com

In Canada: Automation Devices (Canada) Ltd.

4700 Montrose Road
Niagara Falls, Ontario L2H 1K3
Phone: 905-354-3881
Fax: 905-354-4072

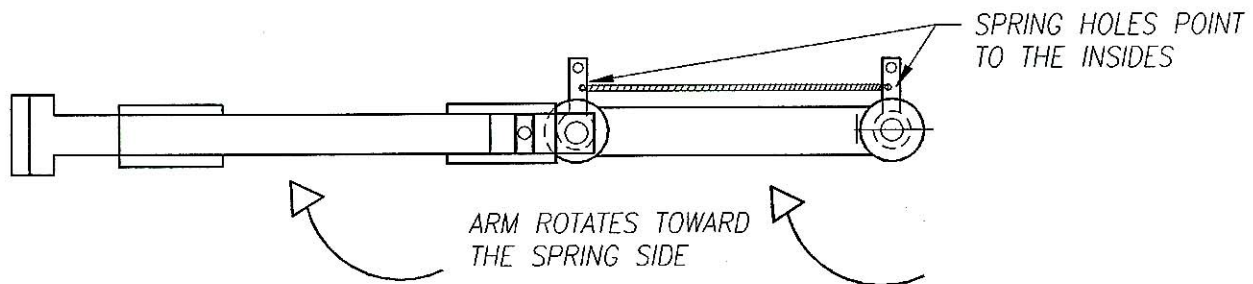
Email: sales@adlcan.com

SWAN-MATIC

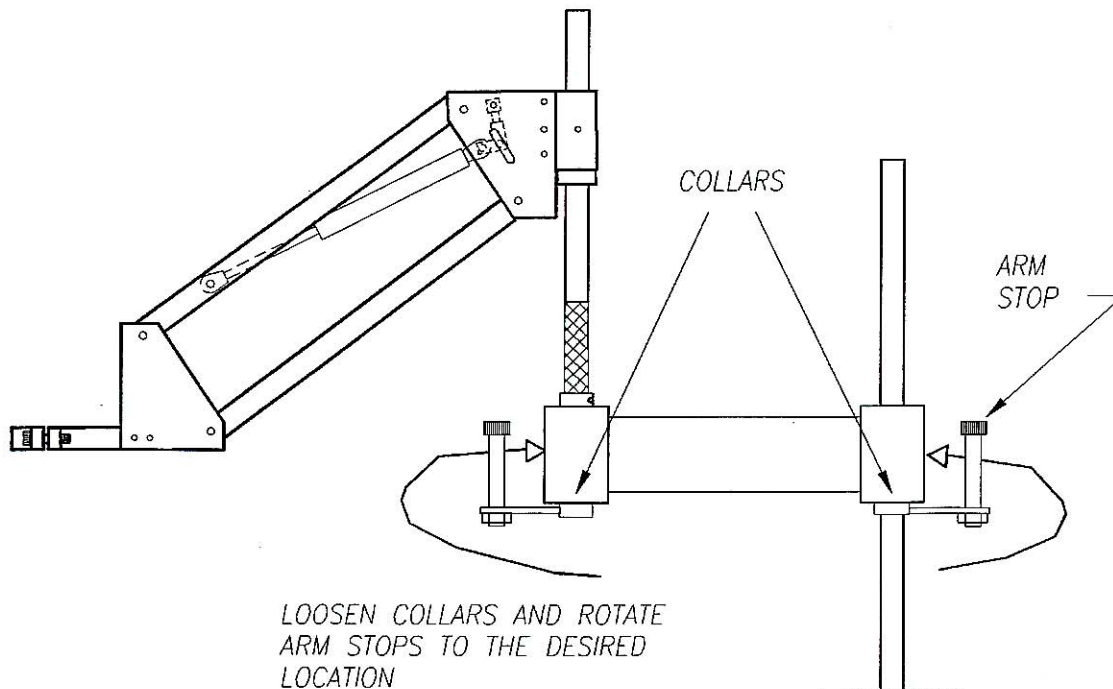
IN18.01

ADJUSTING THE ARM ROTATION

ON THE C545



THE SPRING CAN BE PLACED ON EITHER SIDE OF THE UNIT – DEPENDING ON OPERATOR PREFERENCE. IN ORDER TO USE THE SPRING ON THE OPPOSITE SIDE, THE ARM STOPS MUST BE SWITCHED SO THAT THE SPRING HOLES ALWAYS REMAIN POINTING TO THE INSIDES.



In USA: Automation Devices Inc.

7050 West Ridge Road
Fairview, PA 16415-2099
Phone: 814-474-5561
Fax: 814-474-2131

Web Site: www.autodev.com Email: sales@autodev.com

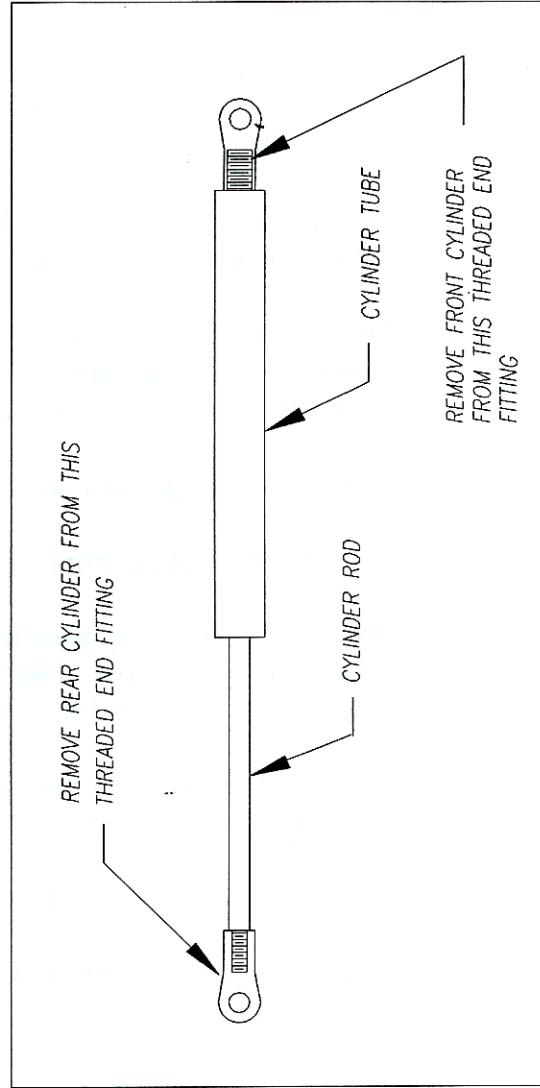
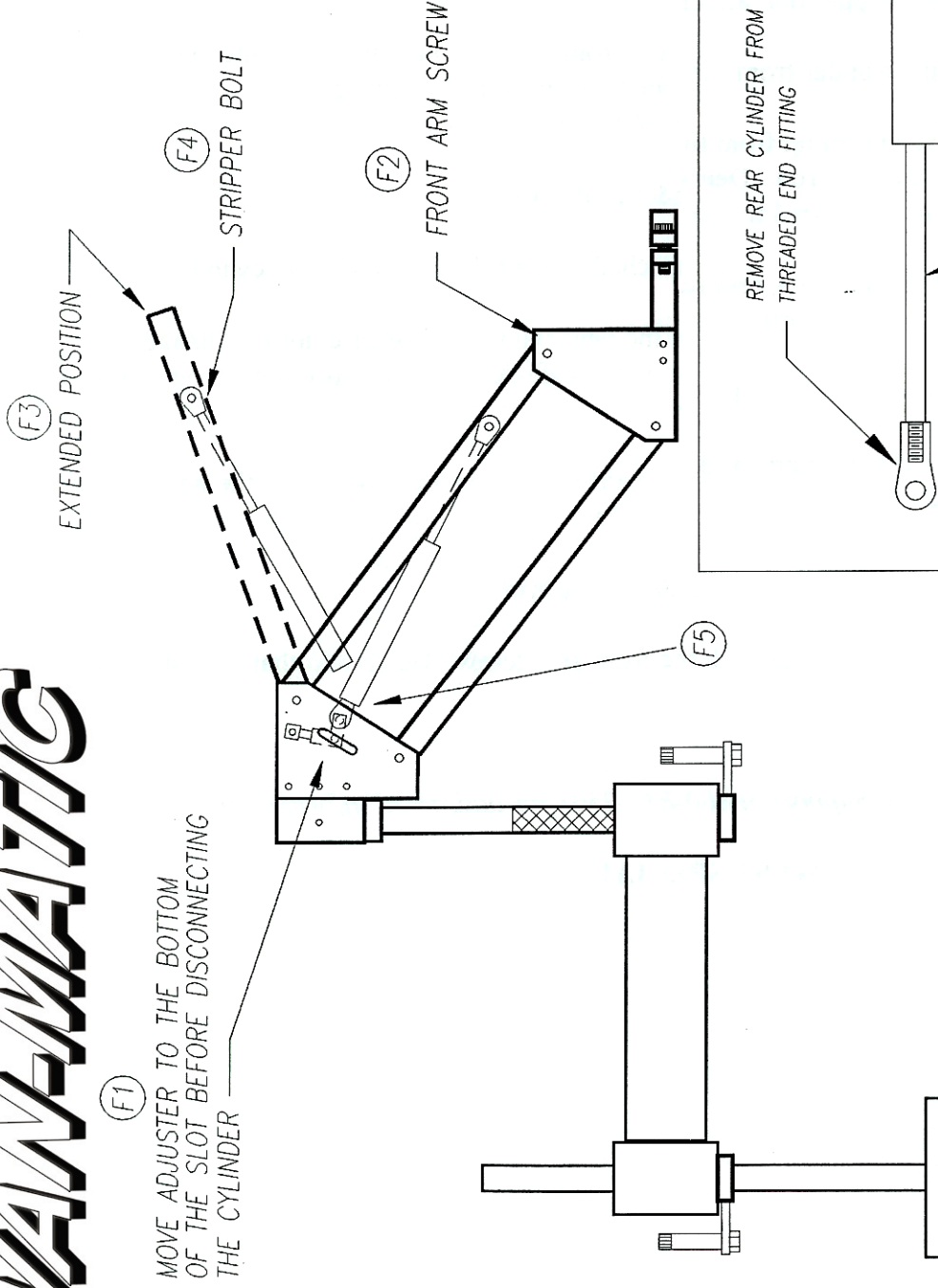
In Canada: Automation Devices (Canada) Ltd.

4700 Montrose Road
Niagara Falls, Ontario L2H 1K3
Phone: 905-354-3881
Fax: 905-354-4072

Email: sales@adlcan.com

SWAN-MATIC

SWAN-MATIC C545 CYLINDER REPLACEMENT DIAGRAM



In USA: Automation Devices Inc.

7050 West Ridge Road
Fairview, PA 16415-2099
Phone: 814-474-5561
Fax: 814-474-2131

Web Site: www.autodev.com Email: sales@autodev.com

In Canada: Automation Devices (Canada) Ltd.

4700 Montrose Road
Niagara Falls, Ontario L2H 1K3
Phone: 905-354-3881
Fax: 905-354-4072
Email: sales@adlcan.com

SWAN-MATIC

IN18.01

Counterbalance Adjustments

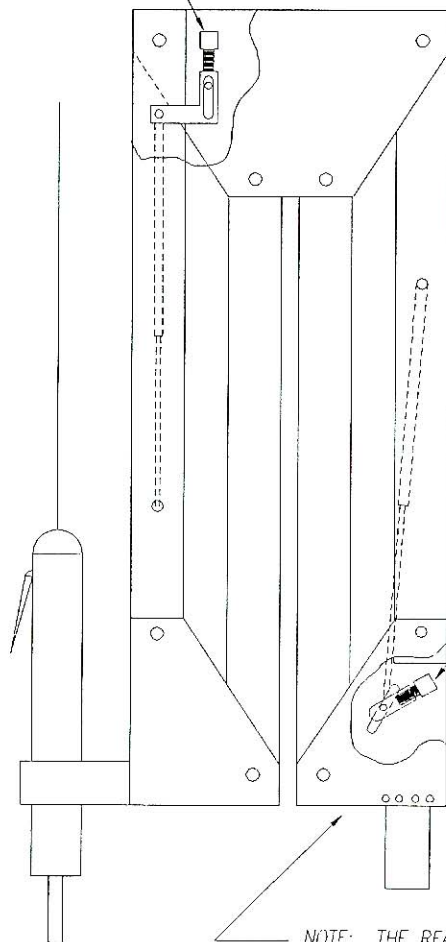
Both rear and front arms adjust to meet the operator's preference:

- a) retract completely to vertical (closed) position; or
- b) maintain angular (open) position.

See Figure 1 for locations of front and rear cylinder adjusters. Note: The adjusters are between the plates in either location.

- 1) Turn the socket head screw on the adjuster counter-clockwise using a 3/16 Allen wrench to **increase** pressure.
- 2) Turn the socket head screw on the adjuster clockwise using a 3/16 Allen wrench to **decrease** pressure.

FRONT CYLINDER ADJUSTER
FOR TAPPING UNIT AND ASSEMBLER



REAR CYLINDER
ADJUSTER FOR TAPPING UNIT

NOTE: THE REAR CYLINDER ADJUSTER
FOR THE FLEXARM ASSEMBLER
UNIT IS LOCATED AT THE BOTTOM
OF THE UNIT. IT OPERATES AS
INDICATED ABOVE.

In USA: Automation Devices Inc.

7050 West Ridge Road
Fairview, PA 16415-2099
Phone: 814-474-5561
Fax: 814-474-2131

Web Site: www.autodev.com Email: sales@autodev.com

In Canada: Automation Devices (Canada) Ltd.

4700 Montrose Road
Niagara Falls, Ontario L2H 1K3
Phone: 905-354-3881
Fax: 905-354-4072

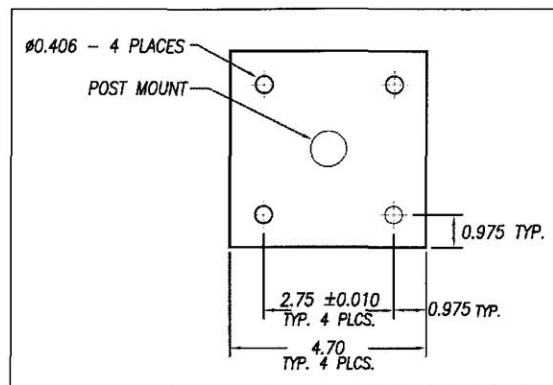
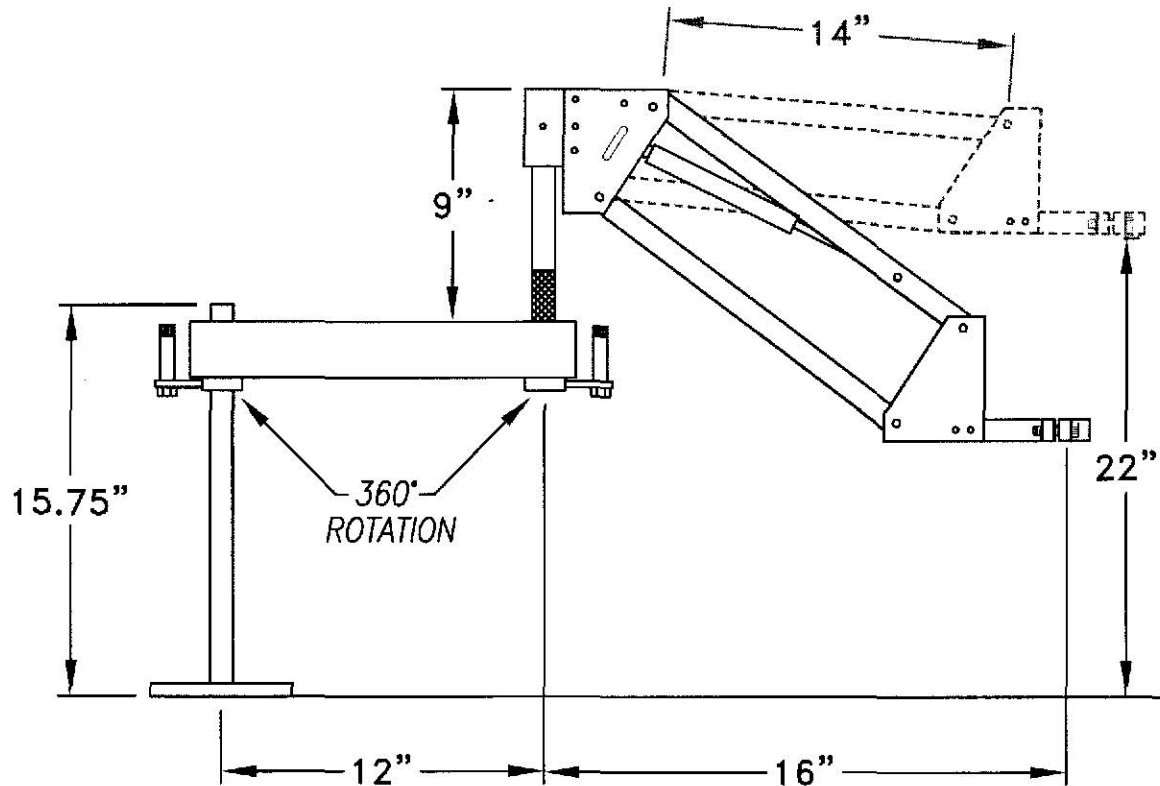
Email: sales@adlcan.com

SWAN-MATIC

IN18.01

C545 Capper Support Arm Dimensions

WORKING RANGE 8"–28"



- * PROVIDE TOTAL WEIGHT TO COUNTER BALANCE WHEN ORDERING
- * MAX CAPACITY IS 12#
- * STANDARD MOUNT ACCOMODATES SWAN-MATIC ELECTRIC CAPPERS

In USA: Automation Devices Inc.

7050 West Ridge Road
Fairview, PA 16415-2099
Phone: 814-474-5561
Fax: 814-474-2131

Web Site: www.autodev.com Email: sales@autodev.com

In Canada: Automation Devices (Canada) Ltd.

4700 Montrose Road
Niagara Falls, Ontario L2H 1K3
Phone: 905-354-3881
Fax: 905-354-4072

Email: sales@adlcan.com