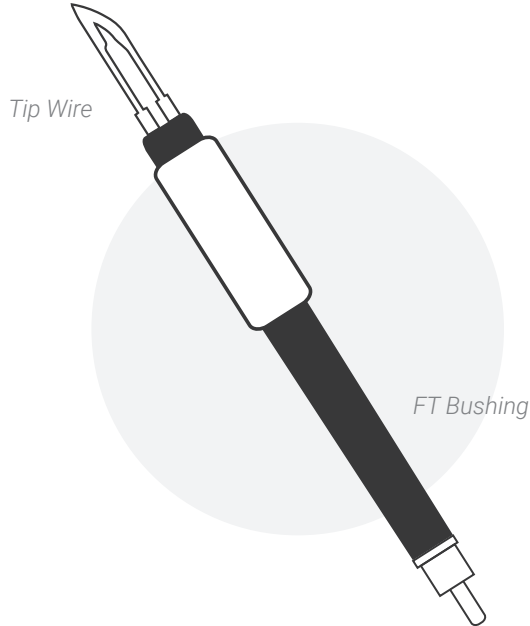


# WOODBURNING TIPS & HANDPIECES

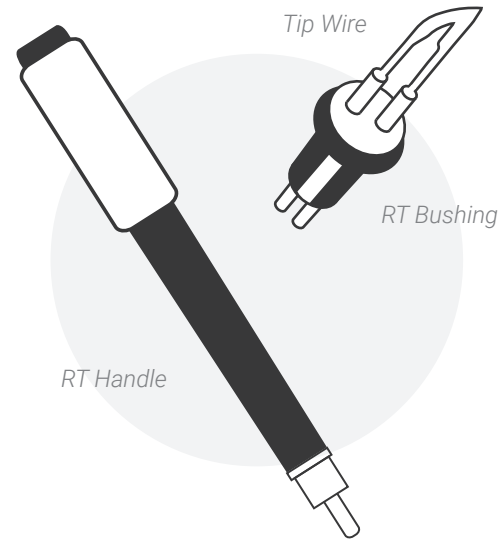
All Colwood Tip Styles are available in either  
**Fixed Tip** OR **Replaceable Tip**

Both Tip Systems provide nearly identical woodburning performances and heat outputs



## FIXED TIP

FT System



## REPLACEABLE TIP

RT System

- Using the Fixed Tip System, the Tip Style is *permanently fixed* in the Handle / Handpiece
- Therefore it is *much easier* to change between Tip Styles, since you simply swap out the *entire handpiece with an handpiece* of a different Tip Style
- The permanent connection of the Fixed Tips increases the longevity of the Tips' lifetime.
- Since each Fixed Tip Style is attached to a Handpiece, the cost of testing out many different Tip Styles can add up
- Using the Replaceable Tip System, the Tip Style is attached to a *RT Bushing* which can slide in and out of the *RT Handle*
- Therefore to change between Tip Styles, you swap *RT Bushings* in and out of a *single RT Handle*. The *EZ Tip Puller* accessory aids in the removal of the hot *RT Bushings*
- Since the Replaceable Tips involve an additional connection, while unlikely, they do have a potential to wear down leading to poor heat connection
- Replaceable Tips are a bit more economic for the woodburning artist looking to sample many different Tip Styles

\*It is helpful to keep an additional RT Handle, so you are not left unable to burn, in the case of a malfunction

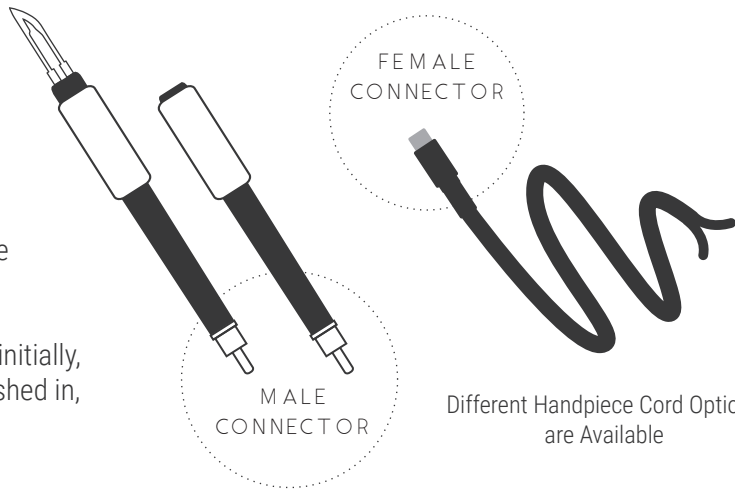
COLWOOD WOODBURNING TOOLS

# OPERATION OF TIP SYSTEMS

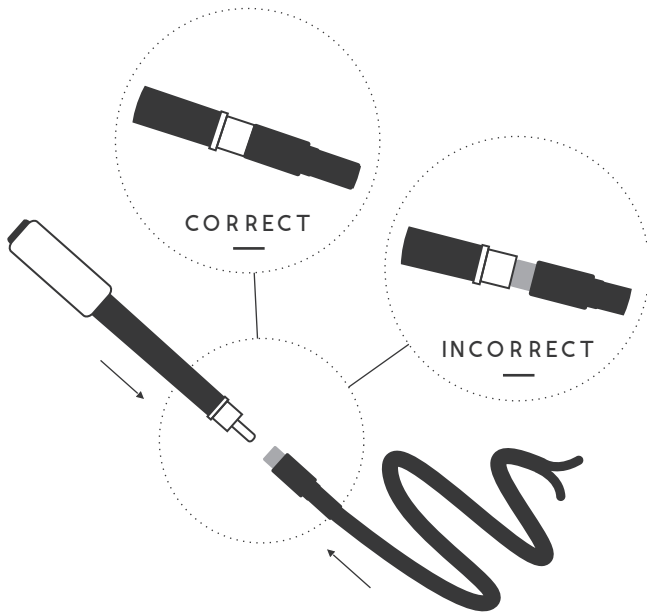
The Fixed Tip pens and RT Handle connect to the Handpiece Cord in the same manner.

The Male Connector on the Handpiece attached to the Female Connector on the Handpiece Cord.

Although it may be a tight fit, especially initially, it is important that the tools are fully pushed in, to be properly connected



Different Handpiece Cord Options are Available

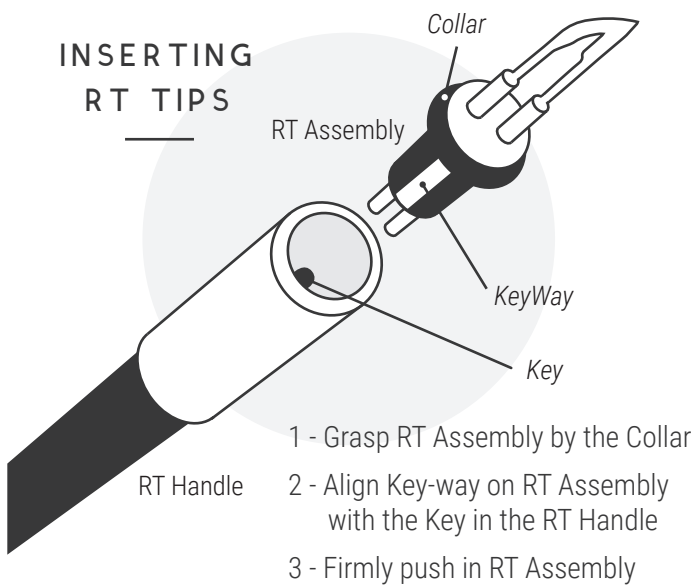


## IMPORTANT FOR PROPER USE

To properly connect the Handpiece to the Handpiece Cord, assure that the metal from the Male Connector *completely covers* the metal from the Female Connector.

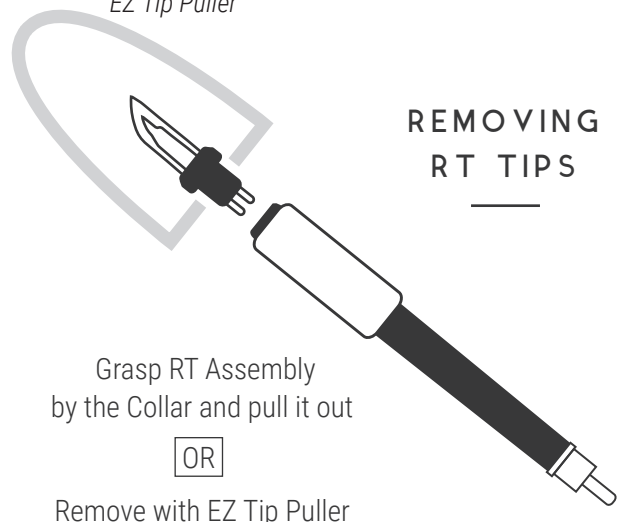
Otherwise intermittent or poor heating can occur when woodburning.

## INSERTING RT TIPS



- 1 - Grasp RT Assembly by the Collar
- 2 - Align Key-way on RT Assembly with the Key in the RT Handle
- 3 - Firmly push in RT Assembly

## EZ Tip Puller



## REMOVING RT TIPS

Grasp RT Assembly by the Collar and pull it out

OR

Remove with EZ Tip Puller