

FITTING DIAGRAM

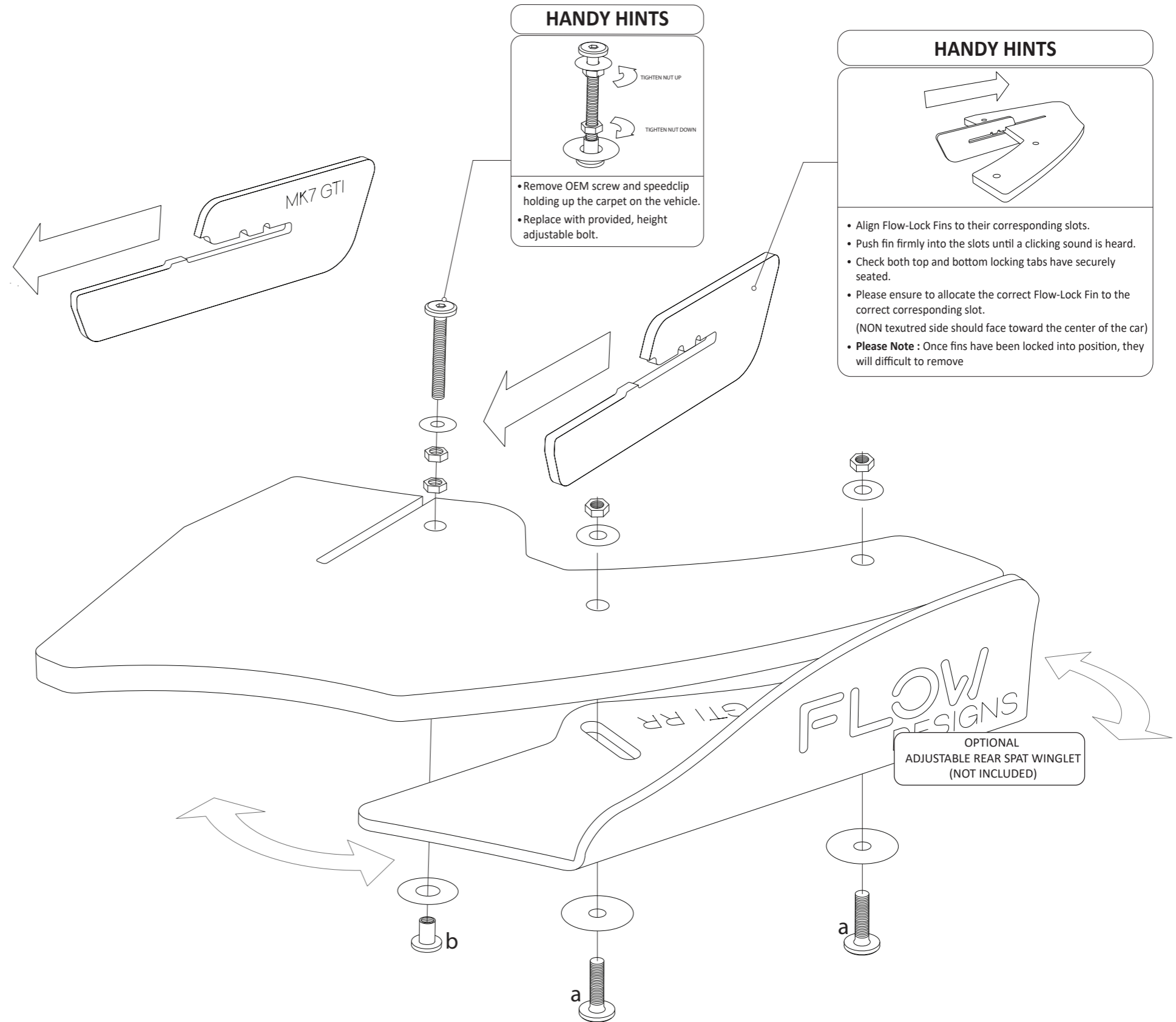
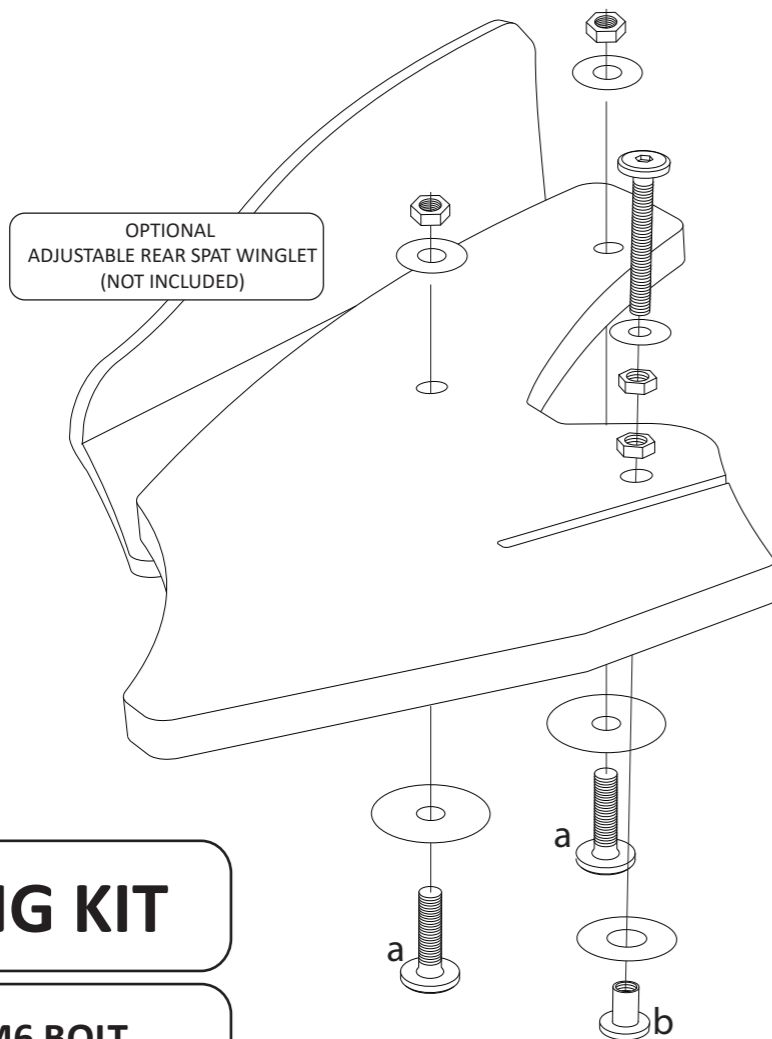
VW MK7 GOLF GTI: REAR SPAT + FLOW-LOCK FINS

INSTALLATION AND FITTING SERVICES

If you are having any difficulties please seek professional advise from the listed International and Domestic Authorised Dealers on our website.

www.flowdesignsaustralia.com

BUMPER REMOVAL NOT REQUIRED



FITTING KIT

a

M6 BOLT
25mm LONG

X 4

PLEASE NOTE:
DRILLING REQUIRED
TO FASTEN TO BUMPER

PLEASE USE 8mm DRILL BIT

b

M6 BOLT
40mm LONG

X 2

PLEASE NOTE:
DRILLING **NOT** REQUIRED
TO FASTEN TO BUMPER

SUPERSEEDS OEM SPEED CLIP