

FITTING DIAGRAM

MERCEDES W176 A45 AMG PFL - REAR DIFFUSER + FLOW-LOCK FINS

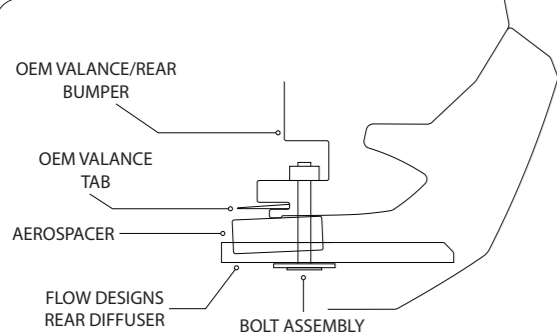
INSTALLATION AND FITTING SERVICES

If you are having any difficulties please seek professional advice from the listed International and Domestic Authorised Dealers on our website.

www.flowdesignsaustralia.com

BUMPER REMOVAL NOT REQUIRED

HANDY HINTS

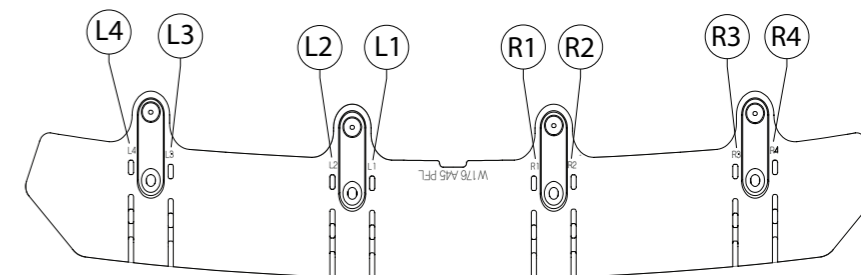


Ensure to drill through OEM Valance Tab and OEM Valance/Rear Bumper so that Bolt is fastened in bumper pocket

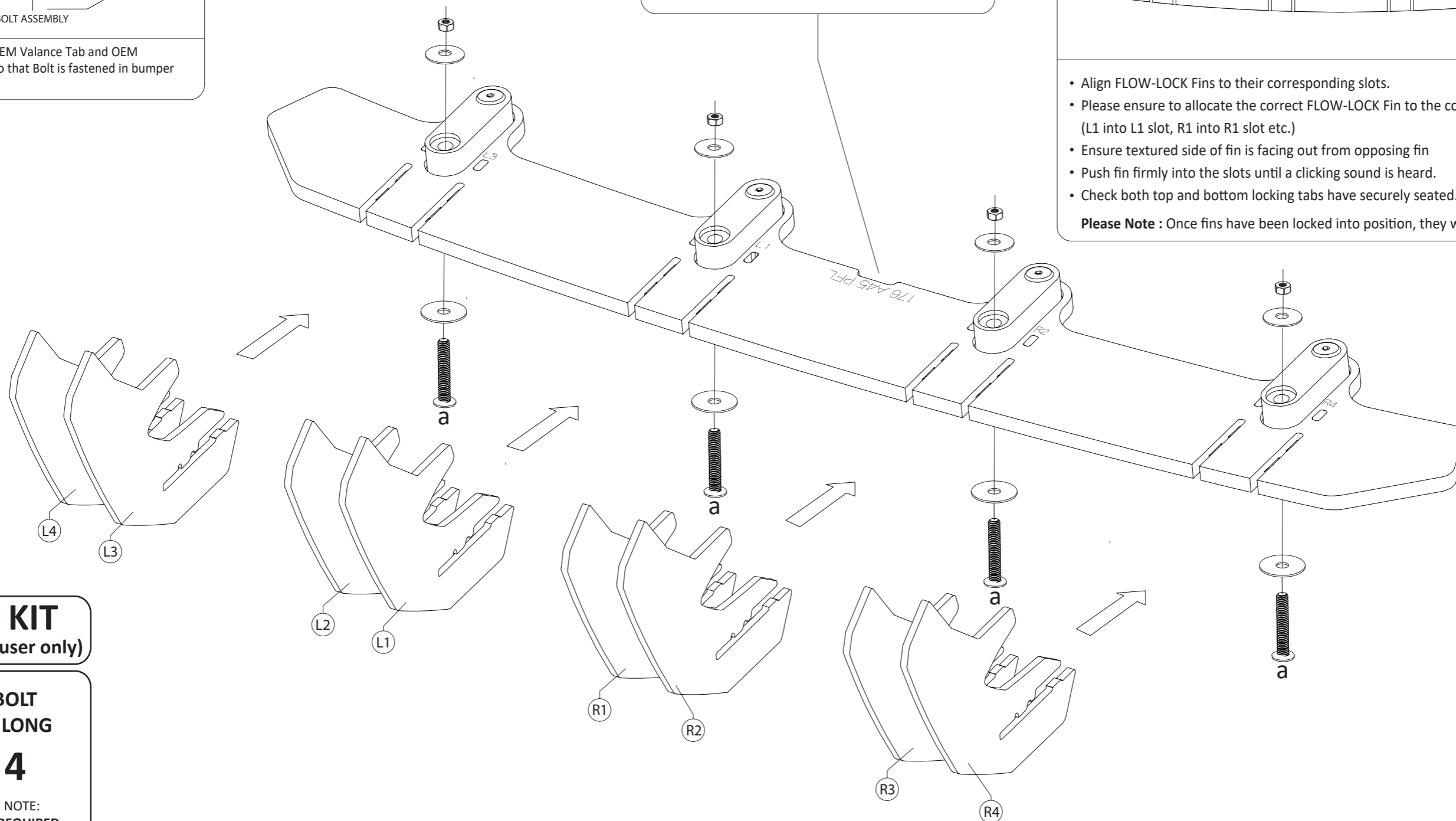
HANDY HINTS

- To ensure correct alignment, line up notch in Flow Designs Rear Diffuser with the tab located in the middle of the OEM Rear Bumper
- Fit diffuser with installed fins to ensure best fitment

HANDY HINTS



- Align FLOW-LOCK Fins to their corresponding slots.
 - Please ensure to allocate the correct FLOW-LOCK Fin to the correct corresponding slot (L1 into L1 slot, R1 into R1 slot etc.)
 - Ensure textured side of fin is facing out from opposing fin
 - Push fin firmly into the slots until a clicking sound is heard.
 - Check both top and bottom locking tabs have securely seated.
- Please Note :** Once fins have been locked into position, they will be difficult to remove.



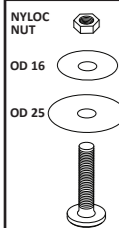
FITTING KIT

(included with diffuser only)

a

**M6 BOLT
50mm LONG**

X 4



PLEASE NOTE:
DRILLING REQUIRED
TO FASTEN TO BUMPER

PLEASE USE 8mm DRILL BIT