

FITTING DIAGRAM

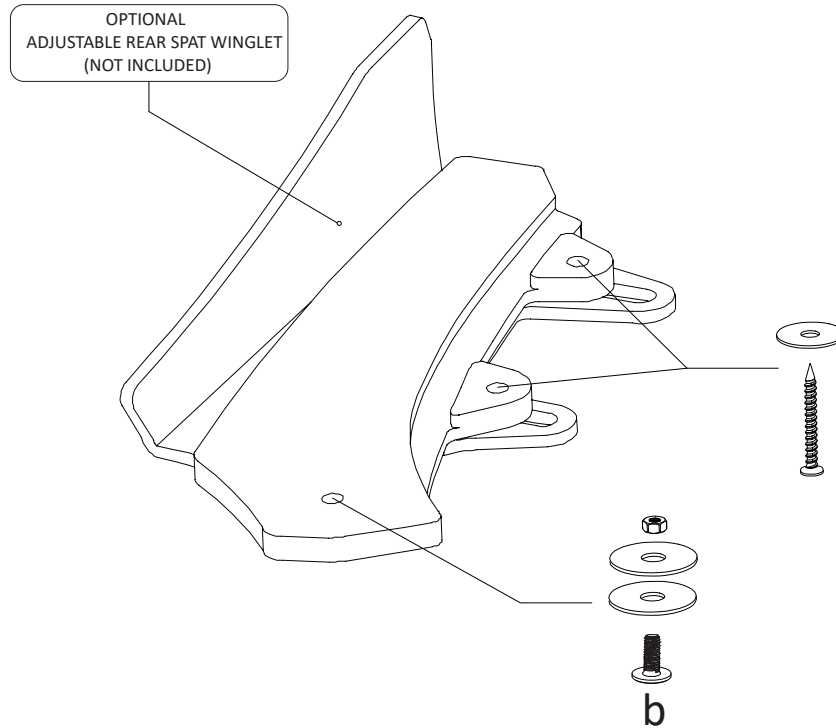
BMW F20 LCI 1/LCI 2 M-SPORT REAR SPATS + ADJUSTABLE REAR WINGLETS

INSTALLATION AND FITTING SERVICES

If you are having any difficulties please seek professional advise from the listed International and Domestic Authorised Dealers on our website.

www.flowdesignsaustralia.com

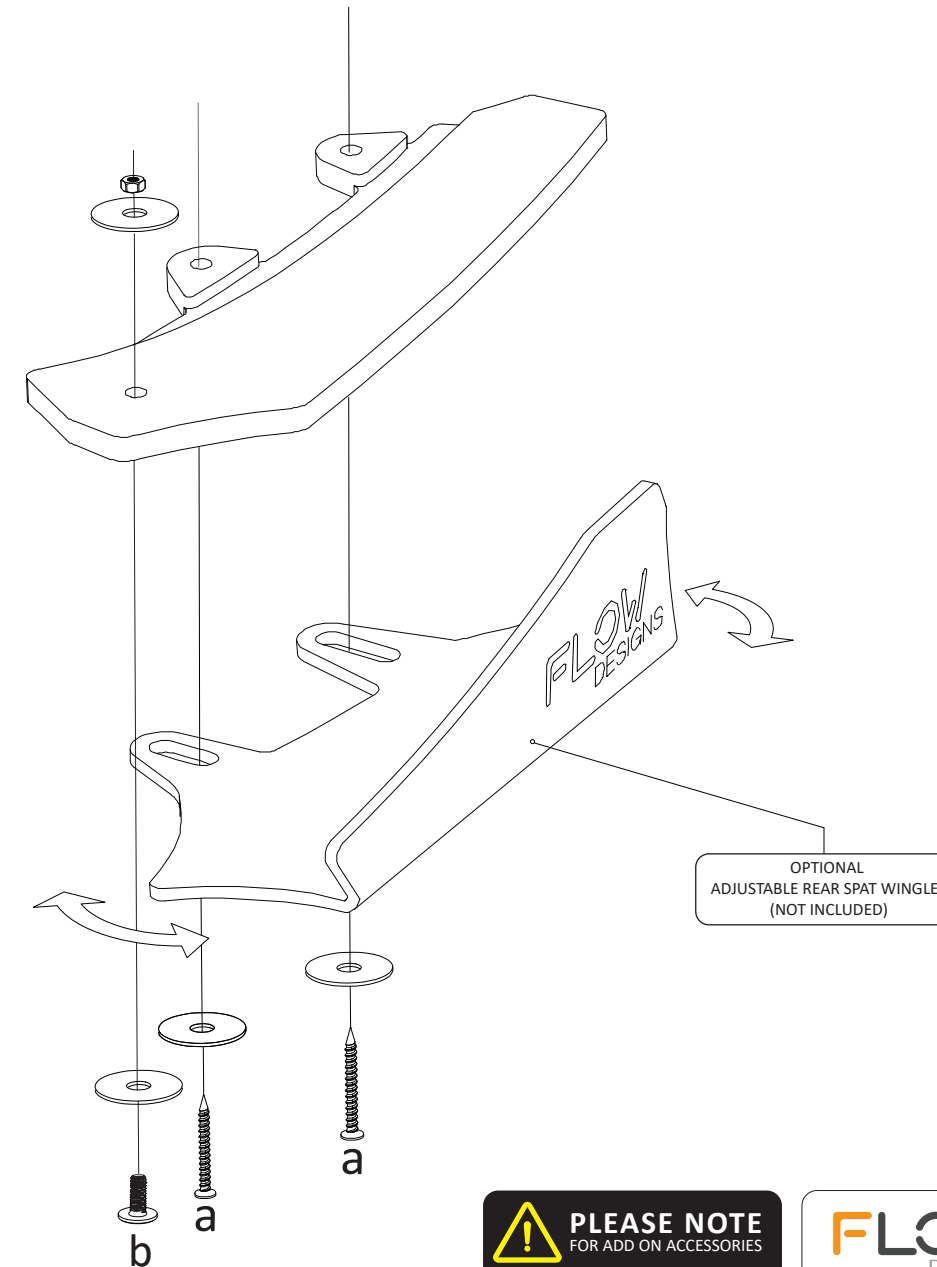
BUMPER REMOVAL NOT REQUIRED



FITTING KIT (included with spats only)

a	<p>BLACK 8g SELF TAPING SCREW 40mm LONG</p> <p>X 4</p> <p>PLEASE NOTE: DRILLING REQUIRED TO FASTEN TO BUMPER DO NOT OVERTIGHTEN</p>
<p>M5 OD 18</p>	

a	<p>M6 BOLT 25mm LONG</p> <p>X 2</p> <p>PLEASE NOTE: DRILLING REQUIRED TO FASTEN TO SIDE SKIRT DO NOT OVERTIGHTEN</p>
<p>NYLOC NUT</p> <p>OD 18</p> <p>OD 18</p>	



PLEASE NOTE
FOR ADD ON ACCESSORIES

DO NOT
OVERTIGHTEN FASTENERS
INTO BRASS FITTINGS

HAND TIGHTEN ONLY

FLOW
DESIGNS

FLOW DESIGNS AUSTRALIA
ABN : 99 055 842 199
 FACTORY 11
 6-7 NICOLE CLOSE
 BAYSWATER NORTH VIC. 3153

DESIGNED AND MANUFACTURED IN AUSTRALIA

TERMS AND CONDITIONS : MISUSE OF GOODS
By taking possession of this Flow Designs Australia product, you (the buyer) agree that you have read, understood and will comply with the following disclaimer:

- This product may not be suitable for road use in your area. We cannot be held liable for any penalties or infringements that may occur after installing any of our products.
- We cannot guarantee that this product will comply with subsequent aftermarket products you have applied to your vehicle.
- It is not legal to fit parts onto a road registered vehicle unless it carries and meets the design rules and public road regulations of your area, region and/or country.
- We do make our best effort to consider safety when designing our products, we want the scene to be a safe place for everyone!

This disclaimer absolves us (Flow Designs Australia) of any and all liability for breaches to any requirement as a result of installation of our products.

www.flowdesignsaustralia.com