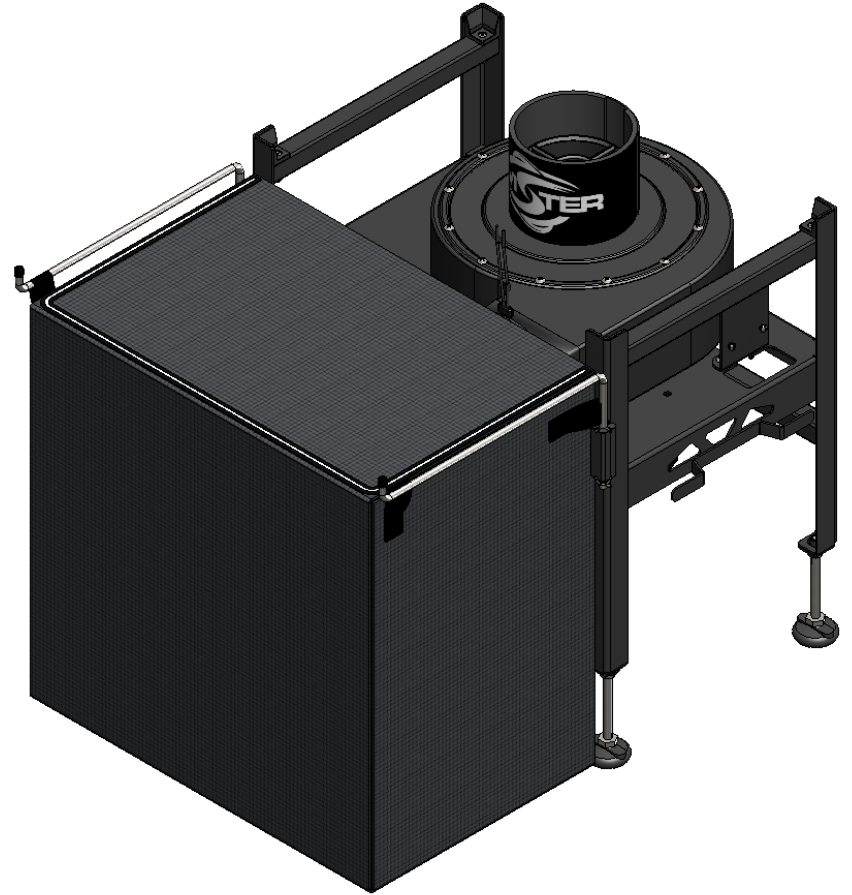
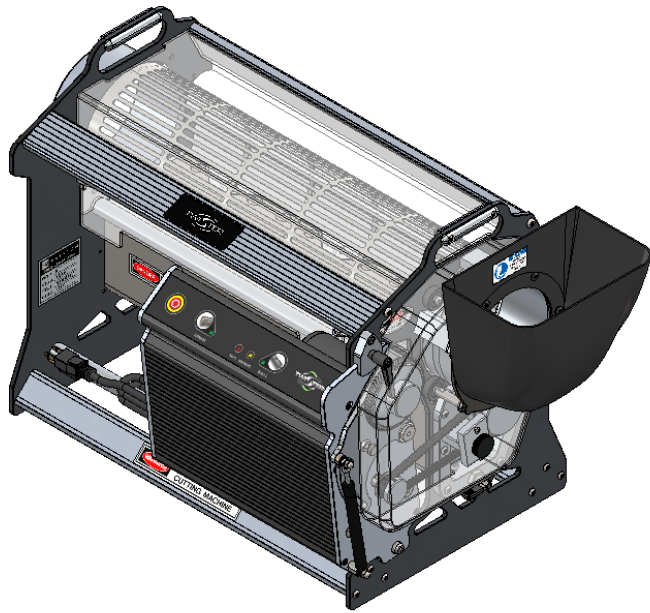
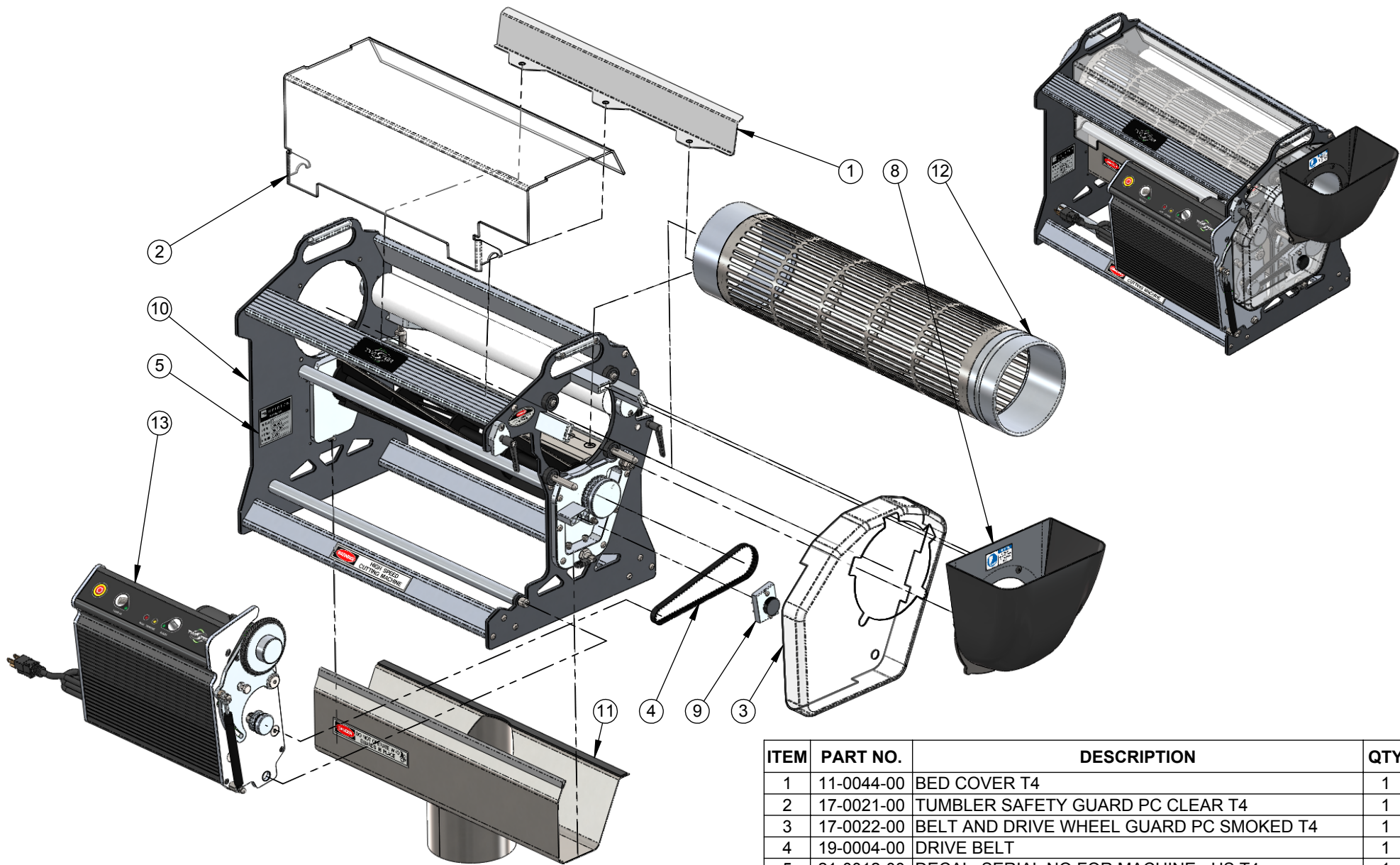


TWISTER T4 RETAILER INFORMATION PACKAGE (U.S.)



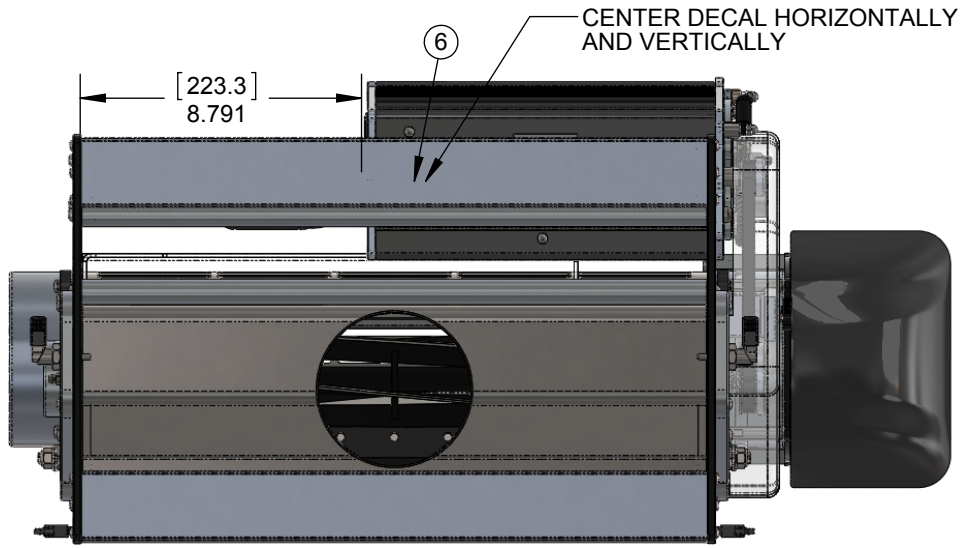


ITEM	PART NO.	DESCRIPTION	QTY
1	11-0044-00	BED COVER T4	1
2	17-0021-00	TUMBLER SAFETY GUARD PC CLEAR T4	1
3	17-0022-00	BELT AND DRIVE WHEEL GUARD PC SMOKED T4	1
4	19-0004-00	DRIVE BELT	1
5	21-0012-00	DECAL, SERIAL NO FOR MACHINE - US T4	1
6	21-0015-00	DECAL, HIDDEN SERIAL NO - US T4	1
7	21-0018-01	DECAL, CONTROL BOX SERIAL NO - US T4	1
8	24-0001-02	HOPPER AND RING ASSY	1
9	24-0013-00	BELT COVER ASSY	1
10	24-0017-05	BODY ASSY	1
11	24-0300-00	SHROUD ASSY	1
12	24-0304-01	TUMBLER ASSY T4, SS-EP-AD 40 X 1/4 SLOT	1
13	24-0305-03	CONTROL BOX ASSY	1

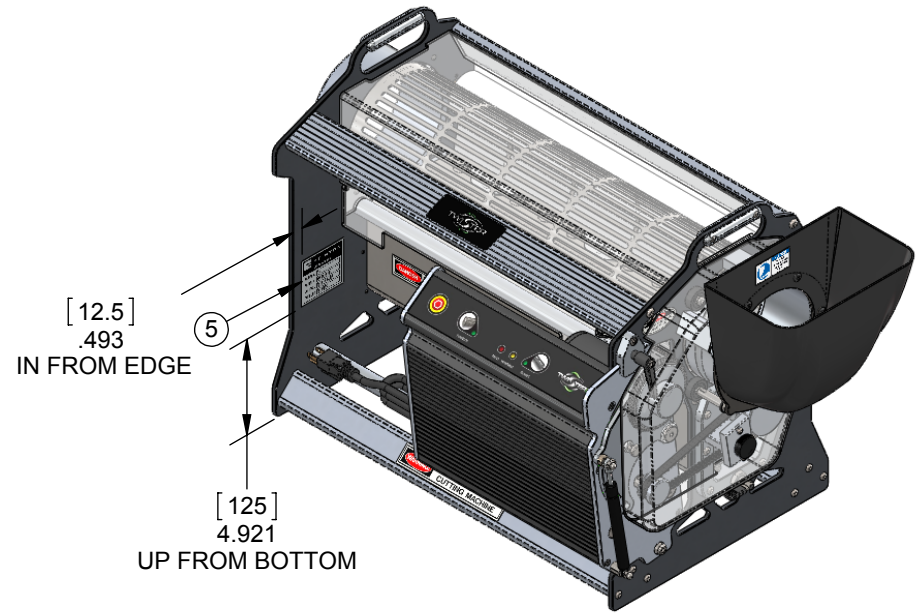


TITLE:
TWISTER T4 A

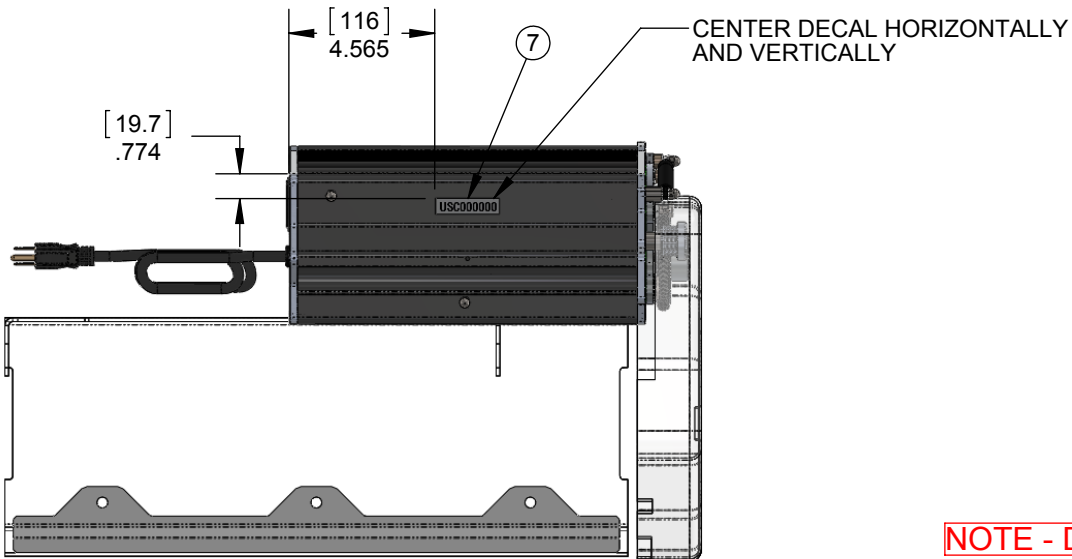
DWG. NO.
24-9006-01



BOTTOM VIEW



DECAL PLACEMENT



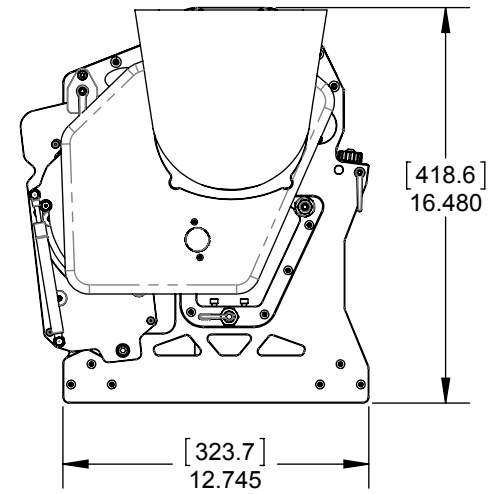
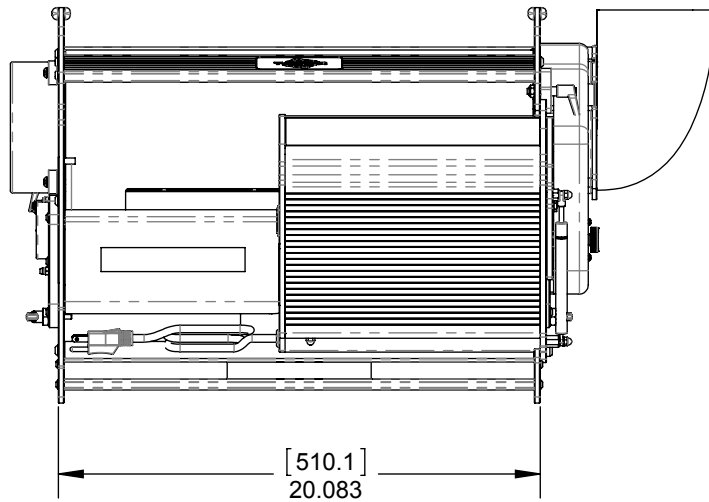
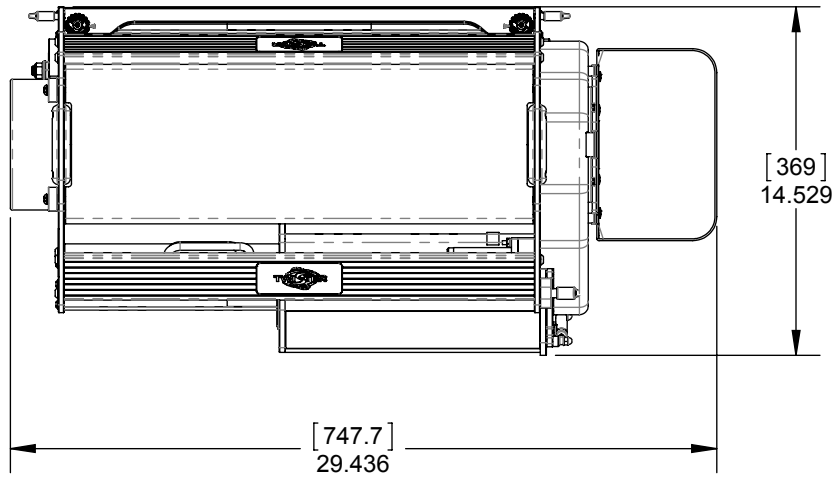
BOTTOM VIEW - CONTOL BOX

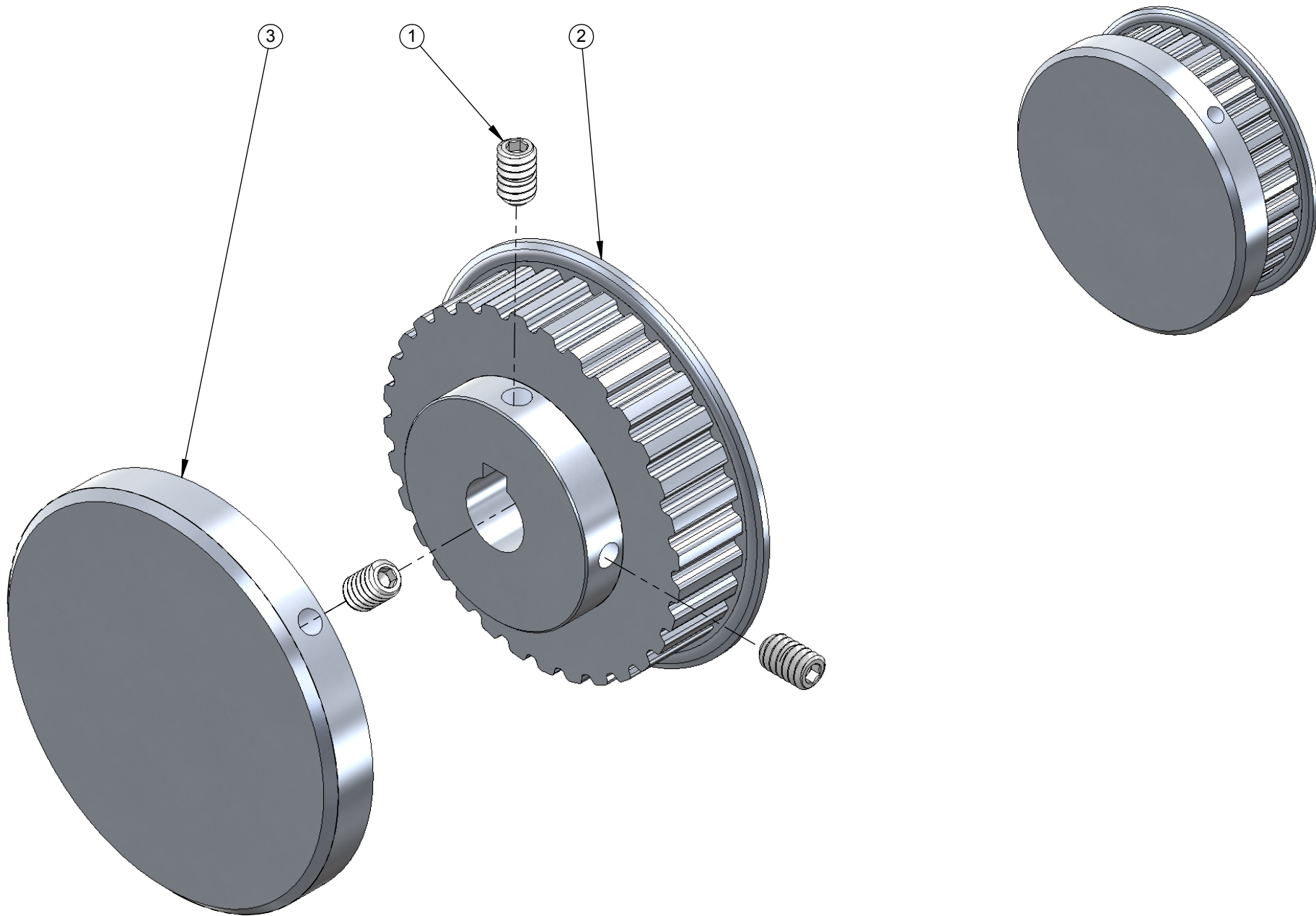
NOTE - DECALS 4, 5 AND 6 MUST HAVE MATCHING NUMBERS!!



TITLE:
TWISTER T4 A

DWG. NO.
24-9006-01



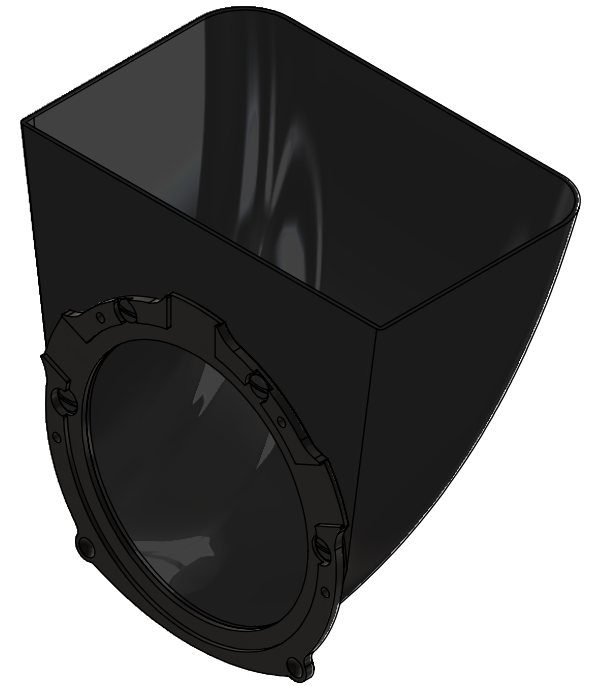
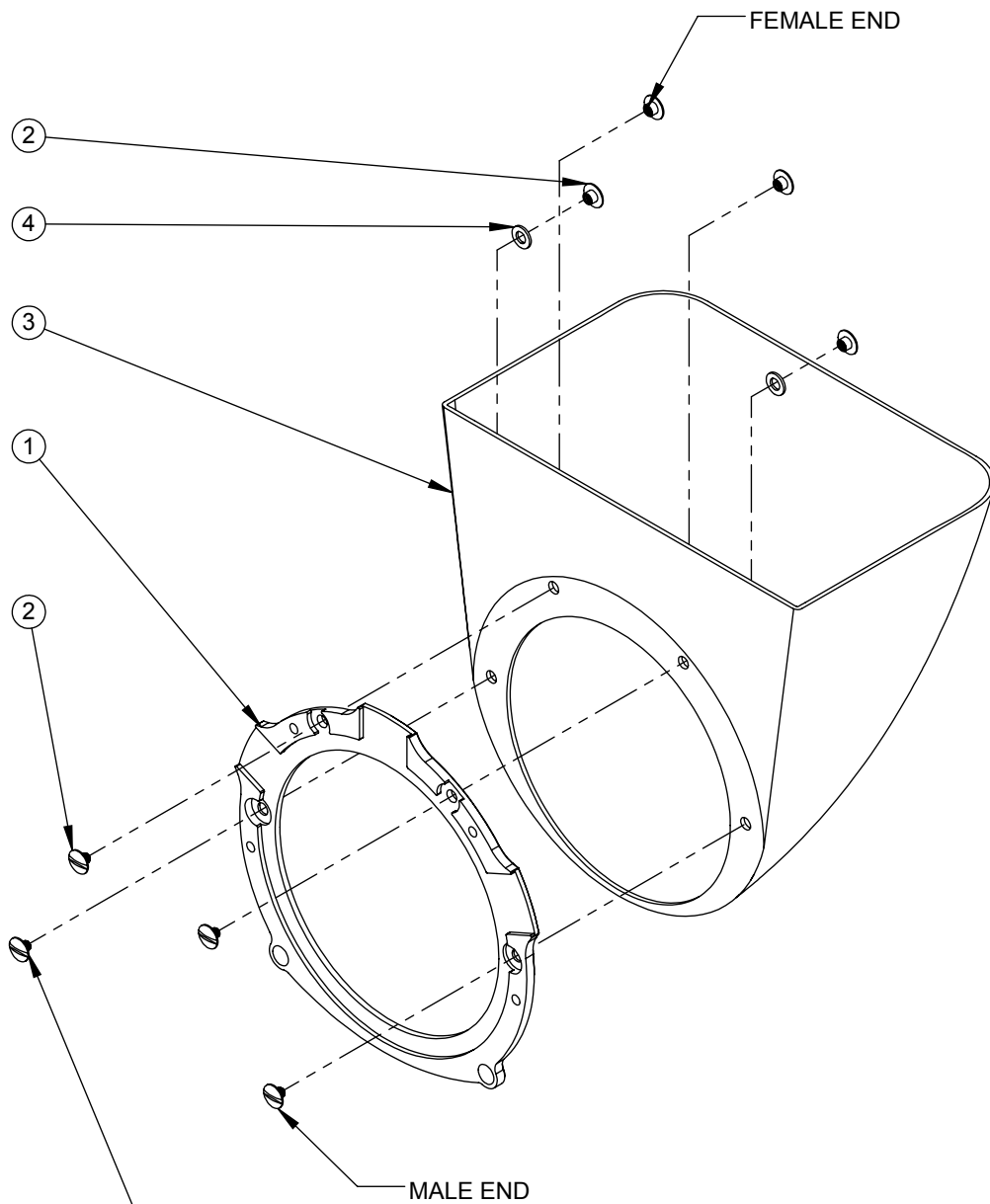


ITEM	PART NO.	DESCRIPTION	QTY
1	13-0146-00	BOLT SET SS #10-24 X 5/16	3
2	19-0005-03	BLADE PULLEY	1
3	19-0012-02	BLADE PULLEY CAP	1



TITLE:
BLADE PULLEY ASSY

DWG. NO.
19-0013-02

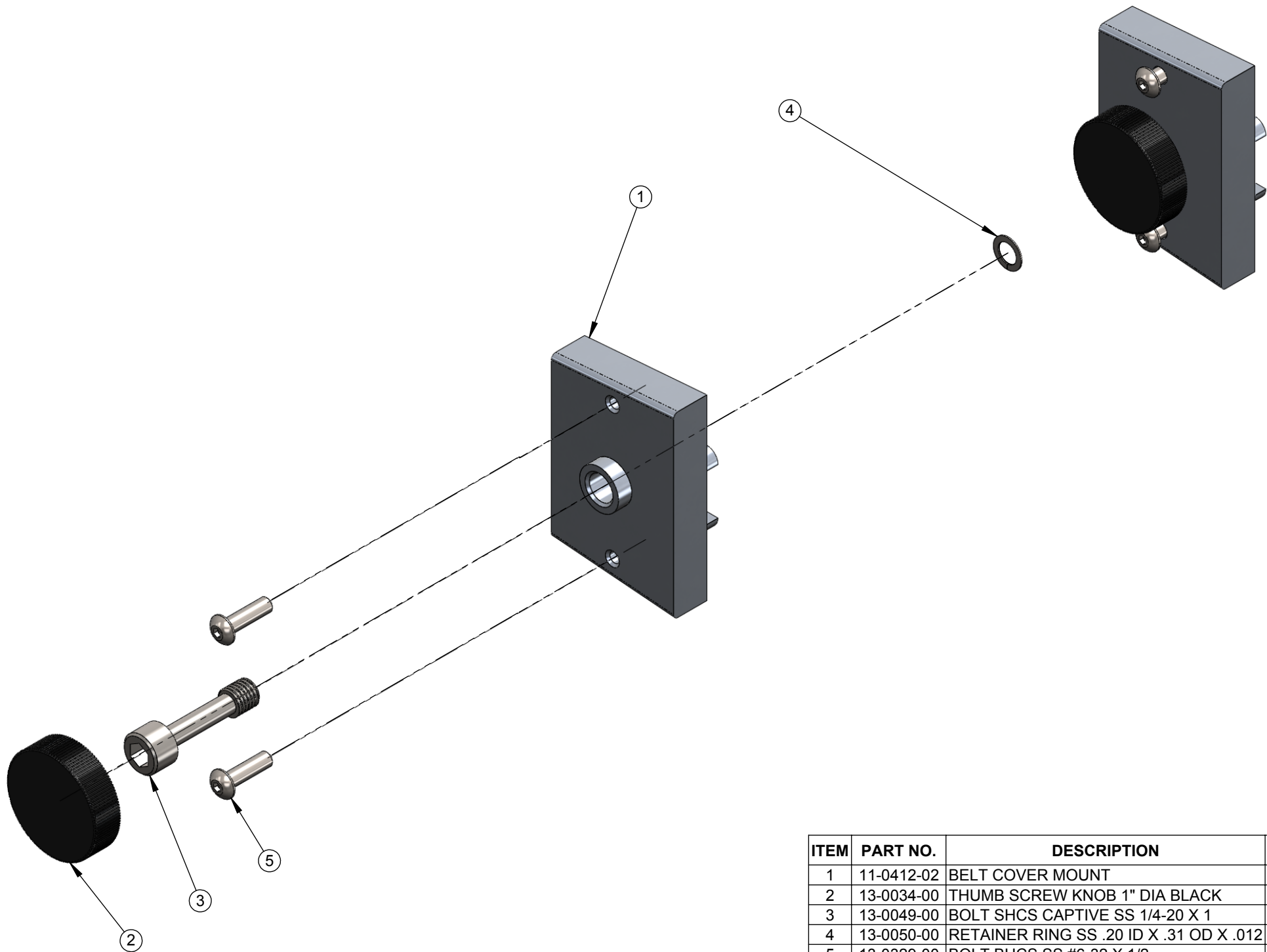


ITEM	PART NO.	DESCRIPTION	QTY
1	11-0329-04	HOPPER RING PLATE T4	1
2	13-0126-00	BINDING POST BLACK AL #8-32 X 1/8	4
3	17-0099-01	HOPPER T4	1
4	13-0012-00	WASHER FLAT SS .21 ID X .39 OD X .04	2
5	21-0084-00	DECAL, REMOVE HOPPER T4	1



TITLE:
HOPPER AND RING ASSY

DWG. NO.
24-0001-02

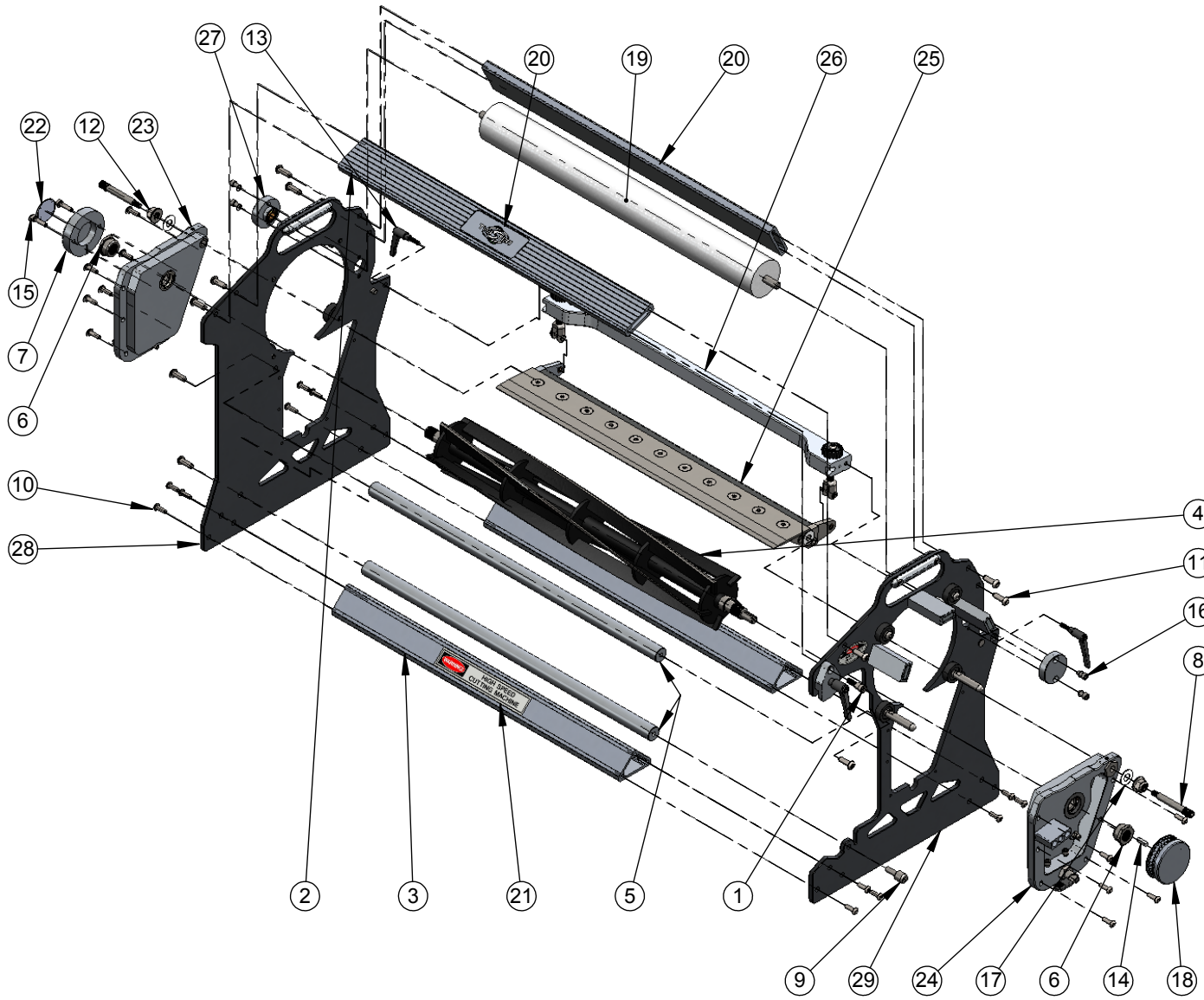


ITEM	PART NO.	DESCRIPTION	QTY
1	11-0412-02	BELT COVER MOUNT	1
2	13-0034-00	THUMB SCREW KNOB 1" DIA BLACK	1
3	13-0049-00	BOLT SHCS CAPTIVE SS 1/4-20 X 1	1
4	13-0050-00	RETAINER RING SS .20 ID X .31 OD X .012	1
5	13-0329-00	BOLT BHCS SS #6-32 X 1/2	2



TITLE:
BELT COVER ASSY

DWG. NO.
24-0013-00

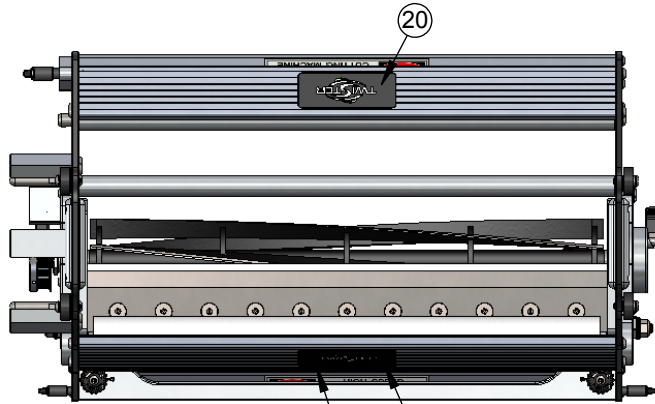


ITEM	PART NO.	DESCRIPTION	QTY
1	11-0045-03	CLAMP SHOULDER BOLT T4	1
2	11-0049	SPREADER BAR EXTRUSION T4	2
3	11-0050	TRIANGULAR EXTRUSION T4	2
4	11-0300-04	FIVE BLADE REEL T4	1
5	11-0306-01	ROUND SPREADER BAR T4	2
6	11-0317-01	REEL BLADE BEARING NUT T4	2
7	11-0318-00	REEL BLADE END CAP T4	1
8	11-0323-04	BEDBAR PIVOT BOLT	2
9	11-0332-02	MOTOR PIVOT BOLT	1
10	13-0001-00	BOLT BHCS SS #10-24 X 5/8	24
11	13-0031-00	BOLT BHCS SS 1/4-20 X 3/4	10
12	13-0037-00	NUT NYLOC FLNG ZP 3/8-16 X .414	2
13	13-0107-00	LEVER HANDLE BLACK 10-24 X 5/8 X 1-5/8	2
14	13-0109-00	KEY 4MM X 4MM X 16MM	1
15	13-0114-00	BOLT HSHCS SS #10-24 X 3/4	2
16	13-0152-00	BOLT HSHCS SS #10-24 X 3/8	4
17	17-0011-00	PLASTIC WASHER - BED BAR T4	2
18	19-0013-02	BLADE PULLEY ASSY	1
19	20-0300-00	NYLON BRUSH T4	1
20	21-0001-01	EMBOSSED ALUMINUM TWISTER LOGO T4	2
21	21-0010-00	DECAL, WARNING - HIGH SPEED CUTTING	2
22	21-0023-00	DECAL, END CAP T4	1
23	24-0301-04	BEARING PLATE	1
24	24-0302-04	BEARING PLATE	1
25	24-0303-03	BEDBAR ASSY T4	1
26	24-0307-00	CROSSBAR ASSY T4	1
27	24-0308-00	BRUSH BUSHING ASSY T4	2
28	24-0309-01	MAIN PLATE ASSY LH T4	1
29	24-0310-02	MAIN PLATE ASSY RH T4	1



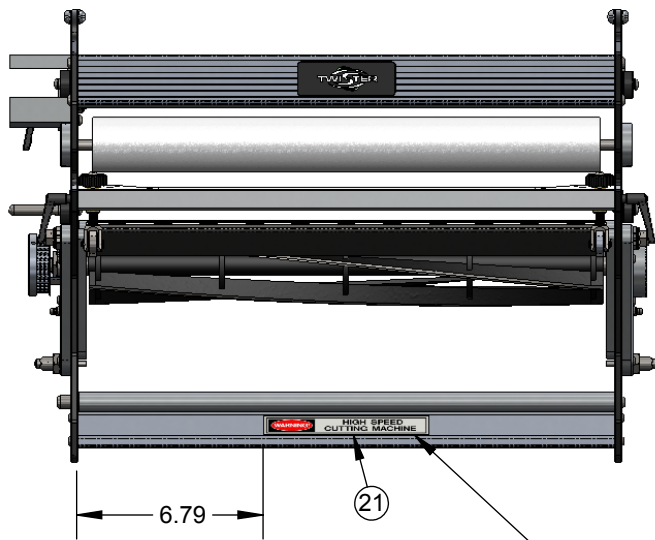
TITLE:
BODY ASSY

DWG. NO.
24-0017-05



CENTER BOTH EMBOSSED DECALS
IN RECESSES IN CROSS BARS

TOP VIEW

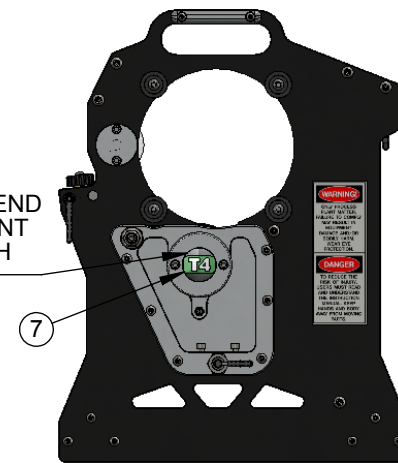


CENTER HORIZONTALLY AND VERTICALLY
ONE DECAL ON EACH SIDE OF MACHINE

BACK VIEW



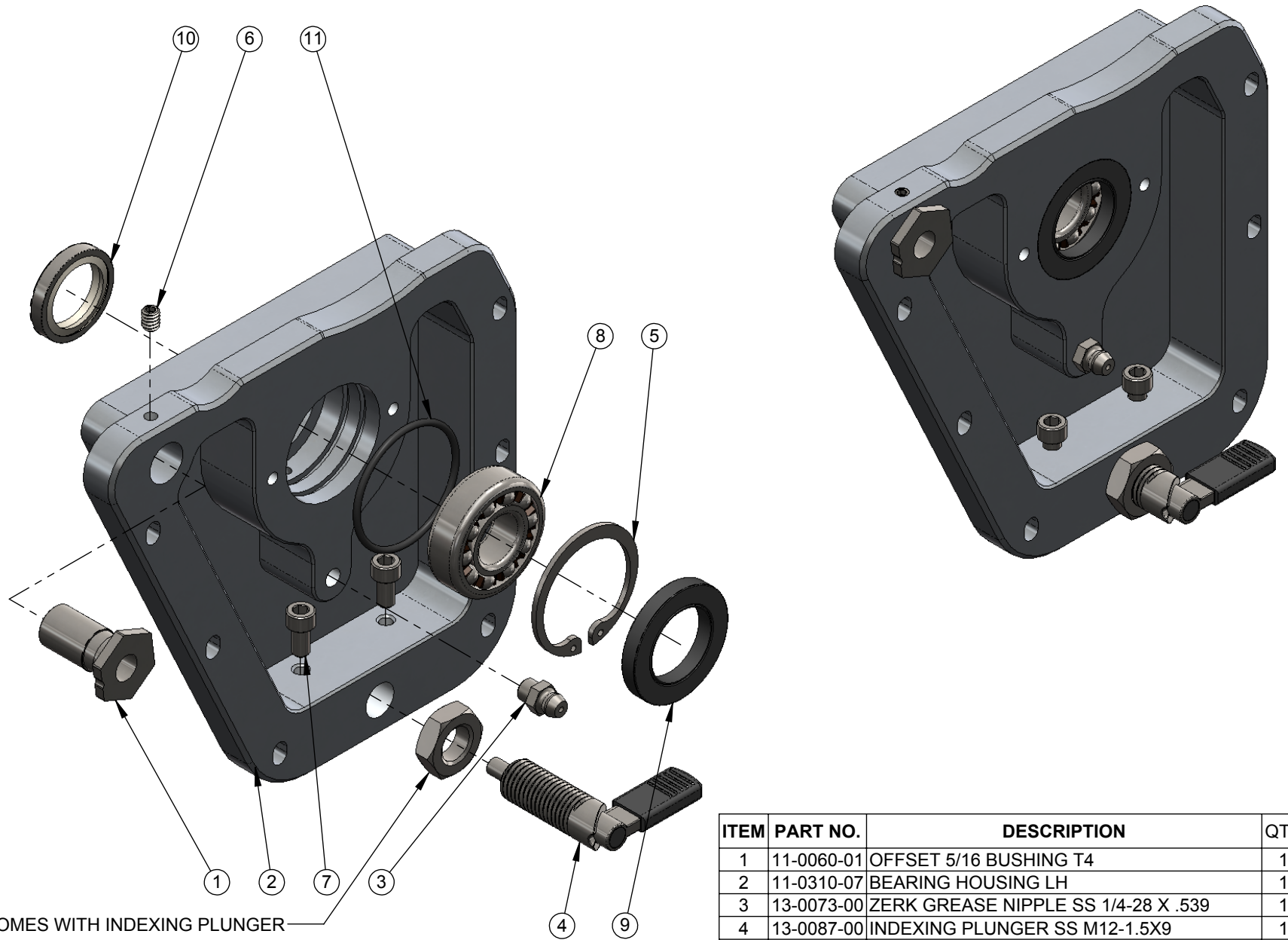
CENTER DECAL IN END
CAP - ENSURE FRONT
FACE IS LEVEL WITH
REST OF MACHINE



SIDE VIEW

DECAL PLACEMENT

UNLESS OTHERWISE SPECIFIED: DIMENSIONS ARE IN INCHES TOLERANCES: LINEAR: INCHES ANGULAR: X = ± 0.025" X = ± 0.5° X.X = ± 0.010" X.X = ± 0.1° X.XX = ± 0.005" X.XX = ± 0.05° X.XXX = ± 0.001" FRACTIONS = ± 1/64"		NAME	DATE		TITLE: BODY ASSY T4
	DRAWN BY: G. HATZIKIRIAKOS	28/01/2014	CHECKED BY: A MCKELLAR		
PROPRIETARY AND CONFIDENTIAL		MATERIAL: N/A	FINISH: N/A	REV 5	
THE INFORMATION CONTAINED IN THIS DRAWING IS THE SOLE PROPERTY OF KEIRTON MANUFACTURING LTD. ANY REPRODUCTION IN PART OR AS A WHOLE WITHOUT THE WRITTEN PERMISSION OF KEIRTON MANUFACTURING LTD. IS PROHIBITED.		PART GROUP: TWISTER T4	COMMENTS: DEBURR AND BREAK ALL SHARP EDGES DO NOT SCALE DRAWING	SIZE A	DWG. NO. 24-0017-05
			SCALE: 1:7	SHEET 2 OF 2	



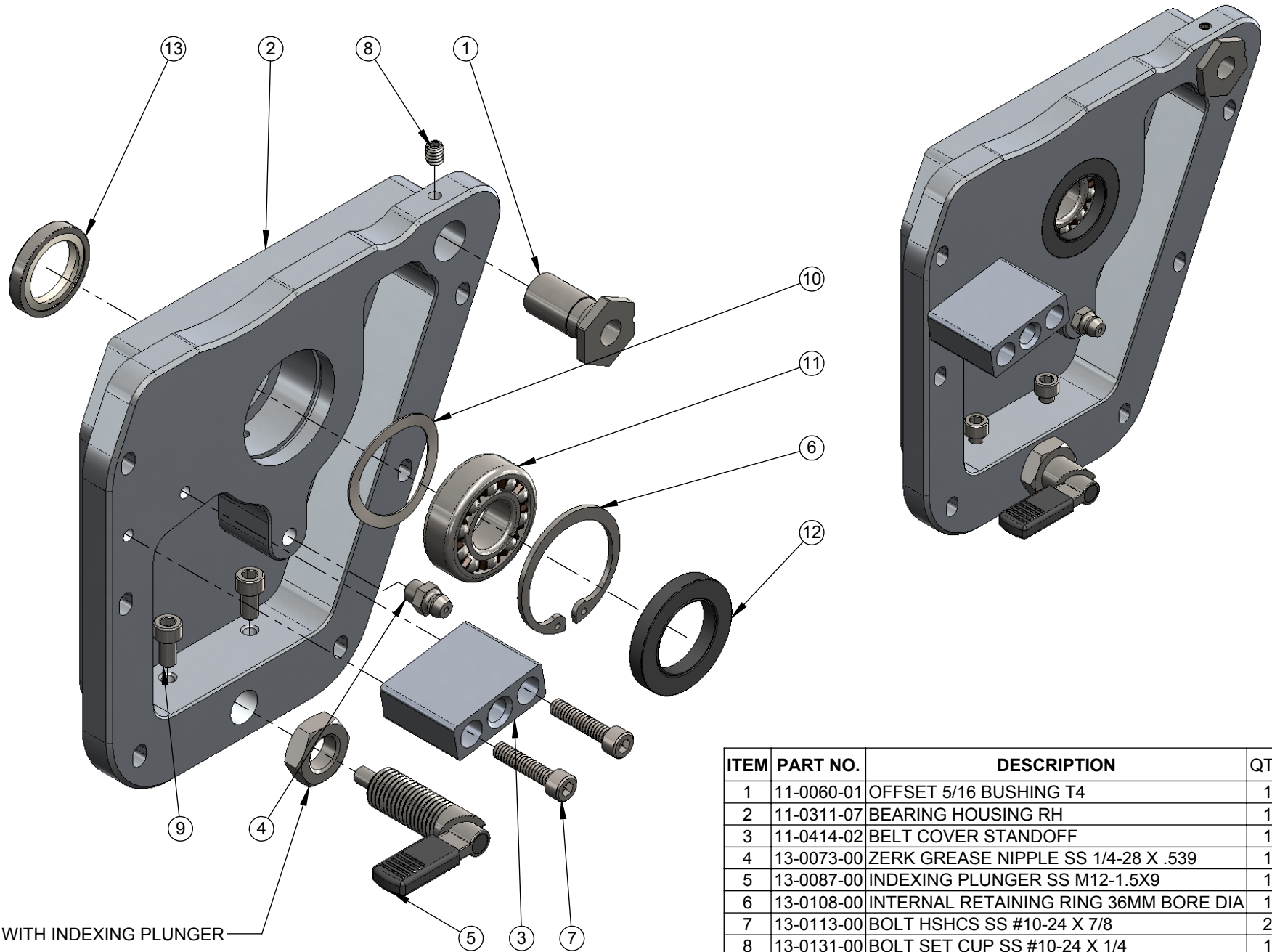
LOCK NUT COMES WITH INDEXING PLUNGER

ITEM	PART NO.	DESCRIPTION	QTY
1	11-0060-01	OFFSET 5/16 BUSHING T4	1
2	11-0310-07	BEARING HOUSING LH	1
3	13-0073-00	ZERK GREASE NIPPLE SS 1/4-28 X .539	1
4	13-0087-00	INDEXING PLUNGER SS M12-1.5X9	1
5	13-0108-00	INTERNAL RETAINING RING 36MM BORE DIA	1
6	13-0131-00	BOLT SET CUP SS #10-24 X 1/4	1
7	13-0152-00	BOLT HSHCS SS #10-24 X 3/8	2
8	19-0300-00	REEL BLADE BEARING T4	1
9	19-0302-00	REEL BLADE OUTER SEAL T4	1
10	19-0303-00	REEL BLADE INNER SEAL T4	1
11	19-0305-00	BEARING O-RING T4	1



TITLE:
BEARING PLATE ASSY LH T4

DWG. NO.
24-0301-04



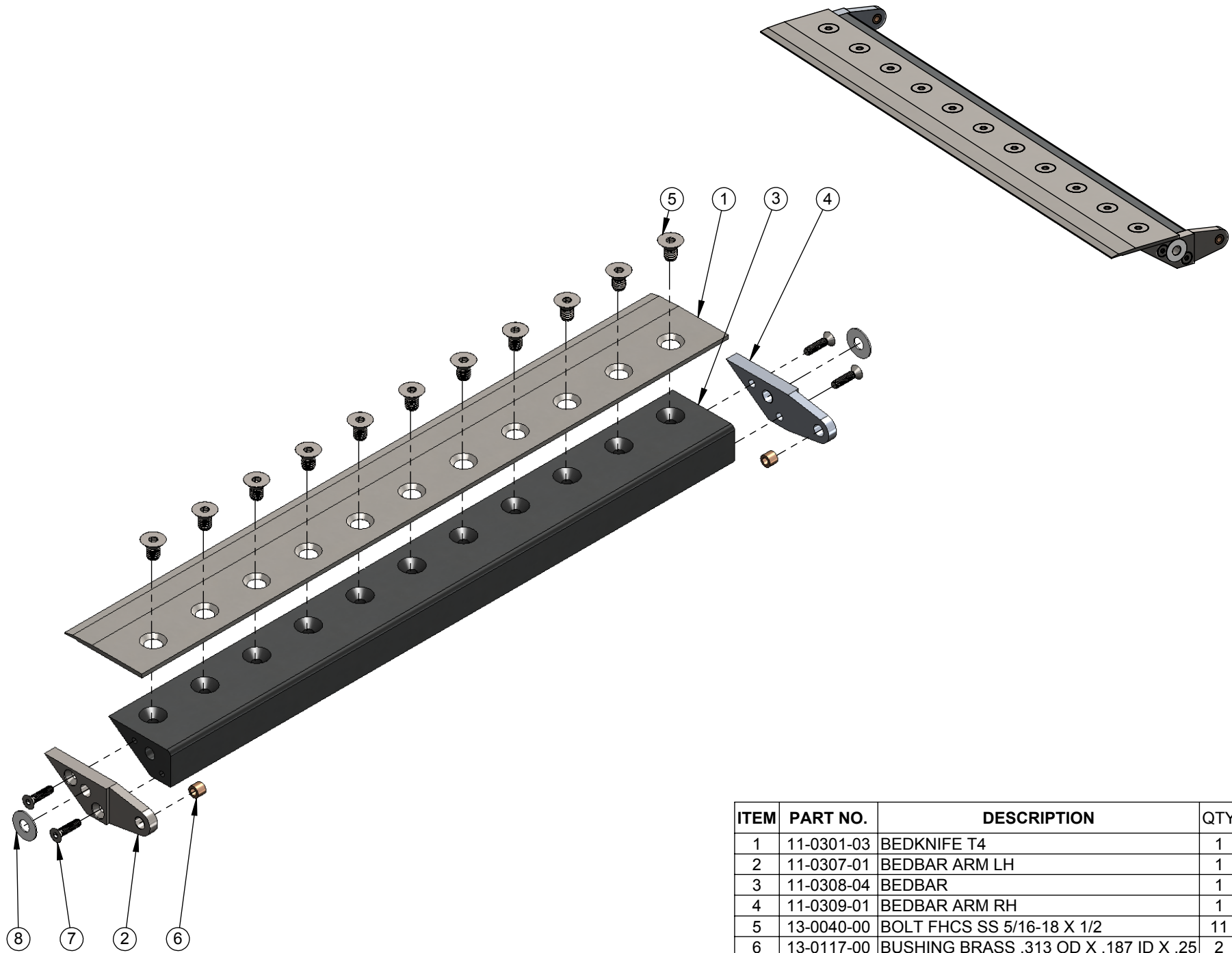
LOCK NUT COMES WITH INDEXING PLUNGER

ITEM	PART NO.	DESCRIPTION	QTY
1	11-0060-01	OFFSET 5/16 BUSHING T4	1
2	11-0311-07	BEARING HOUSING RH	1
3	11-0414-02	BELT COVER STANDOFF	1
4	13-0073-00	ZERK GREASE NIPPLE SS 1/4-28 X .539	1
5	13-0087-00	INDEXING PLUNGER SS M12-1.5X9	1
6	13-0108-00	INTERNAL RETAINING RING 36MM BORE DIA	1
7	13-0113-00	BOLT HSHCS SS #10-24 X 7/8	2
8	13-0131-00	BOLT SET CUP SS #10-24 X 1/4	1
9	13-0152-00	BOLT HSHCS SS #10-24 X 3/8	2
10	13-0302-00	WAVE WASHER 1.35 OD X 1.06 ID X .015	1
11	19-0300-00	REEL BLADE BEARING T4	1
12	19-0302-00	REEL BLADE OUTER SEAL T4	1
13	19-0303-00	REEL BLADE INNER SEAL T4	1



TITLE:
BEARING PLATE ASSY RH T4

DWG. NO.
24-0302-04

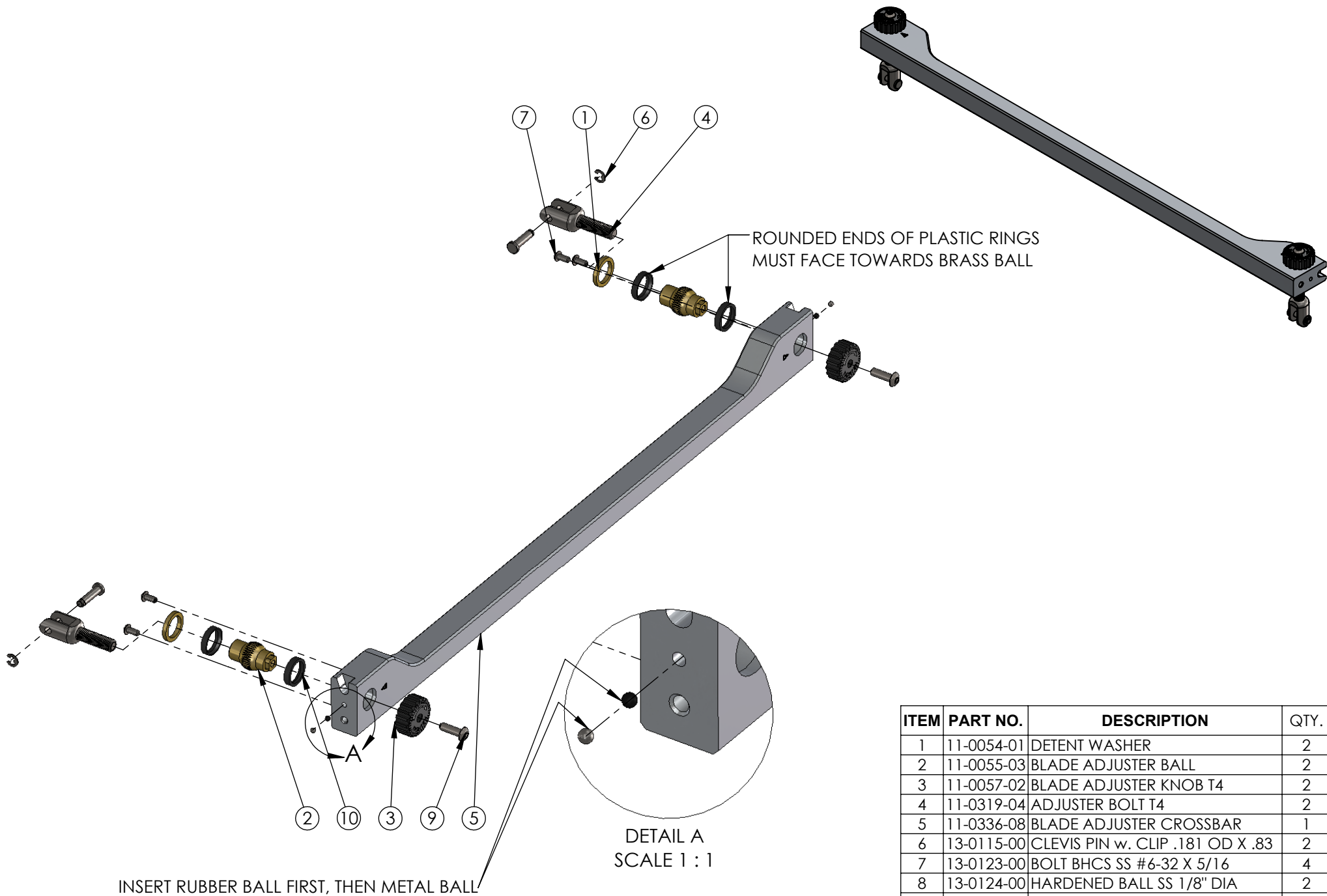


ITEM	PART NO.	DESCRIPTION	QTY
1	11-0301-03	BEDKNIFE T4	1
2	11-0307-01	BEDBAR ARM LH	1
3	11-0308-04	BEDBAR	1
4	11-0309-01	BEDBAR ARM RH	1
5	13-0040-00	BOLT FHCS SS 5/16-18 X 1/2	11
6	13-0117-00	BUSHING BRASS .313 OD X .187 ID X .25	2
7	13-0145-00	BOLT FHCS SS #10-24 X .75	4
8	17-0017-00	BEDBAR TEFLON WASHER T4	2



TITLE:
BEDBAR ASSY T4

DWG. NO.
24-0303-03



ROUNDED ENDS OF PLASTIC RINGS
MUST FACE TOWARDS BRASS BALL

DETAIL A
SCALE 1 : 1

INSERT RUBBER BALL FIRST, THEN METAL BALL

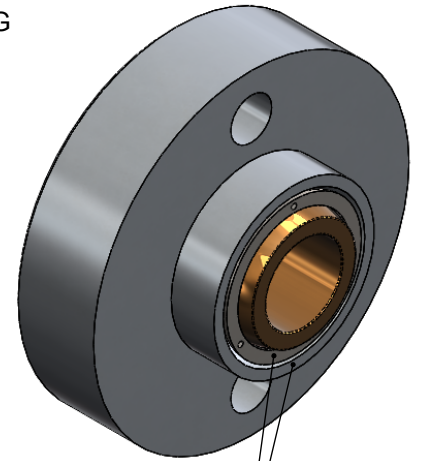
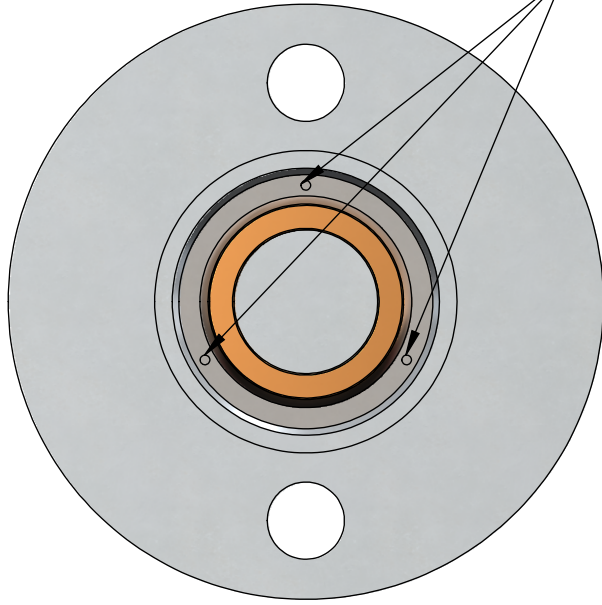
ITEM	PART NO.	DESCRIPTION	QTY.
1	11-0054-01	DETENT WASHER	2
2	11-0055-03	BLADE ADJUSTER BALL	2
3	11-0057-02	BLADE ADJUSTER KNOB T4	2
4	11-0319-04	ADJUSTER BOLT T4	2
5	11-0336-08	BLADE ADJUSTER CROSSBAR	1
6	13-0115-00	CLEVIS PIN w. CLIP .181 OD X .83	2
7	13-0123-00	BOLT BHCS SS #6-32 X 5/16	4
8	13-0124-00	HARDENED BALL SS 1/8" DIA	2
9	13-0125-00	BOLT BHCS SS #10-32 X 5/8	2
10	17-0018-00	BALL SEAT RING	4
11	17-0019-00	DETENT RUBBER BALL	2



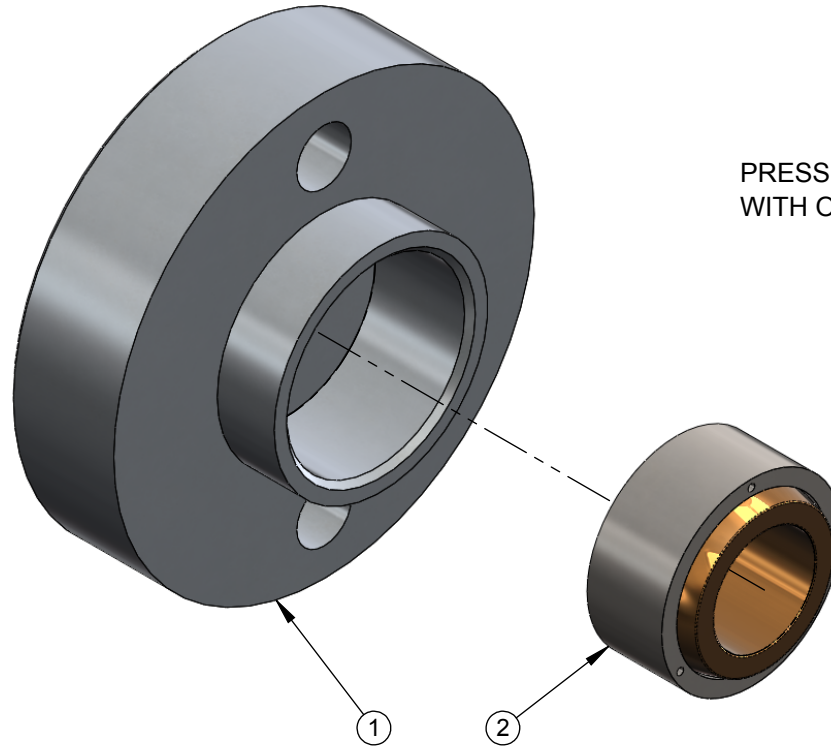
TITLE:
CROSSBAR ASSY T4

DWG. NO.
24-0307-00

USE CENTERPUNCH AND INDENT 3 LOCATIONS TO PREVENT ROLLING



PRESS IN UNTIL FLUSH WITH OUTER RIM



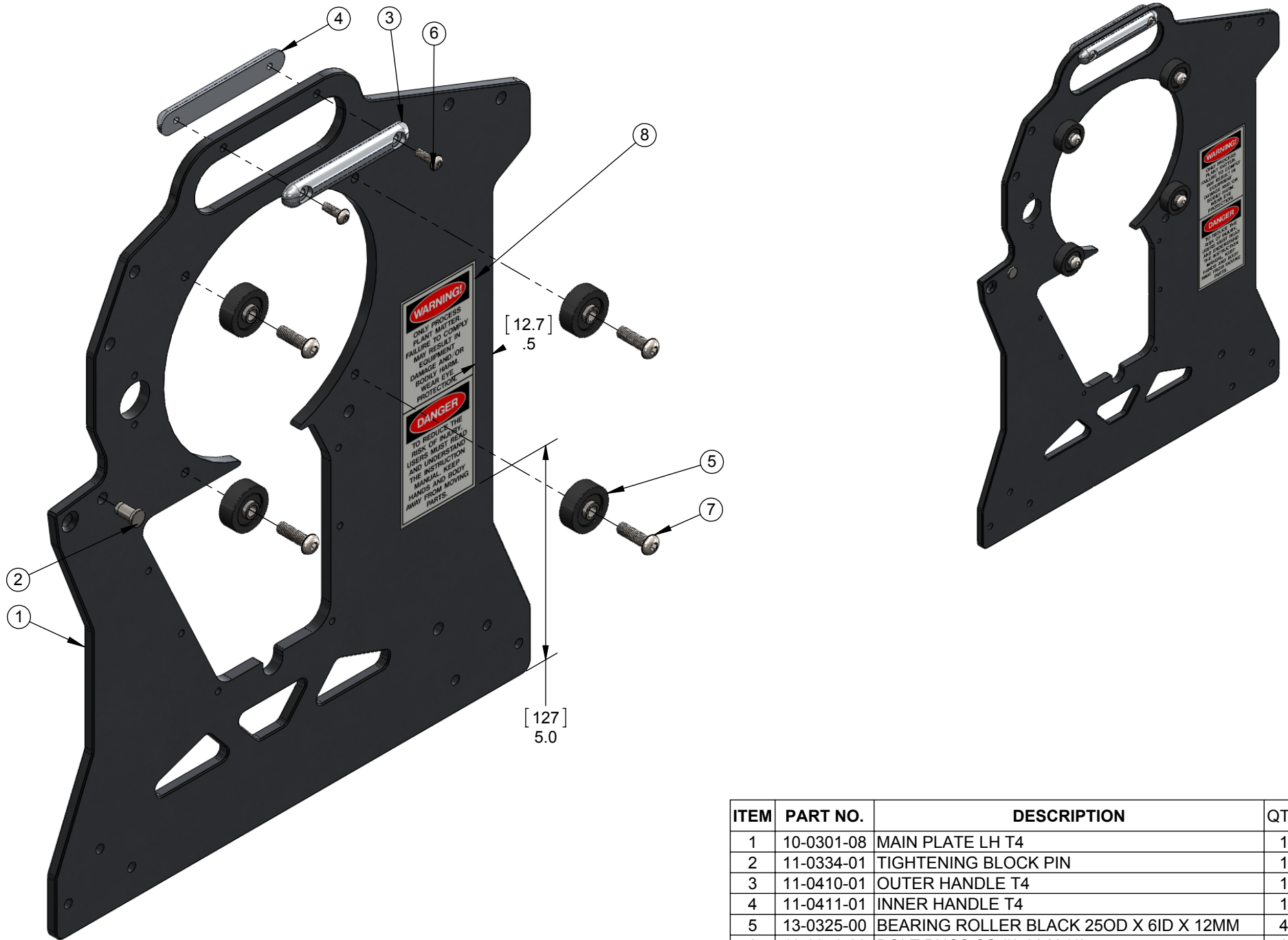
AFTER ASSEMBLY, INSERT BRUSH SHAFT (OR OTHER 3/8" DIA SHAFT) TO ENSURE THAT BRUSH SHAFT WILL ROLL FREELY INSIDE INNER BRONZE SLEEVE, BUT BRONZE SLEEVE ITSELF DOES NOT ROLL.

ITEM	PART NO.	DESCRIPTION	QTY
1	11-0312-02	BRUSH BUSHING HOUSING	1
2	19-0301-00	BRUSH BUSHING T4	1



TITLE:
BRUSH BUSHING ASSY T4

DWG. NO.
24-0308-00

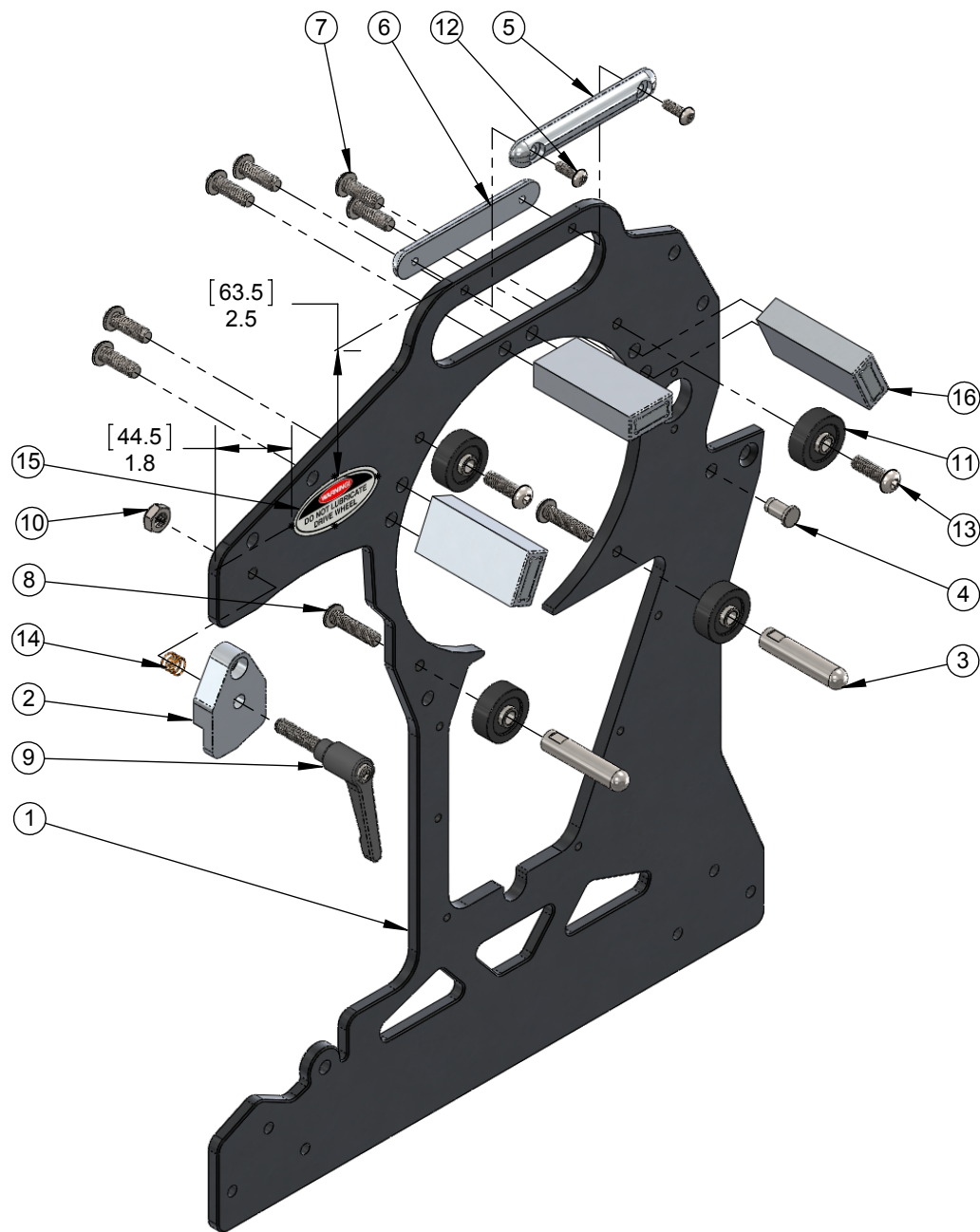


ITEM	PART NO.	DESCRIPTION	QTY
1	10-0301-08	MAIN PLATE LH T4	1
2	11-0334-01	TIGHTENING BLOCK PIN	1
3	11-0410-01	OUTER HANDLE T4	1
4	11-0411-01	INNER HANDLE T4	1
5	13-0325-00	BEARING ROLLER BLACK 25OD X 6ID X 12MM	4
6	13-0340-00	BOLT BHCS SS #8-32 X 1/2	2
7	13-0350-00	BOLT BHCS SS M6-1 X 20	4
8	21-0008-00	DECAL, WARNING - ONLY PROCESS MATTER T4	1



TITLE:
MAIN PLATE ASSY LH T4

DWG. NO.
24-0309-01

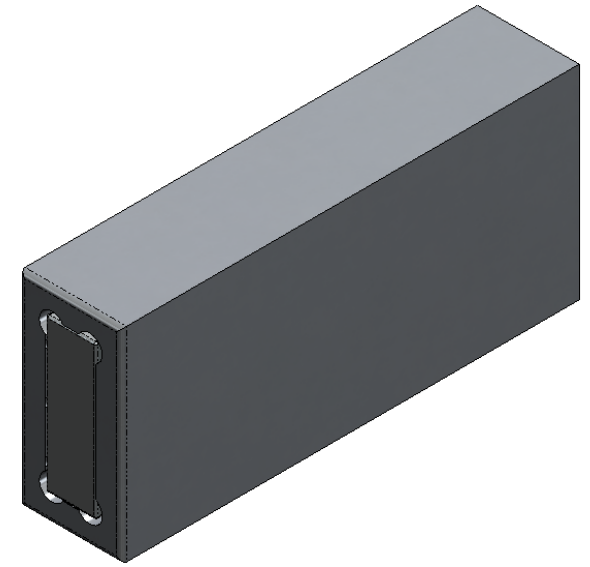
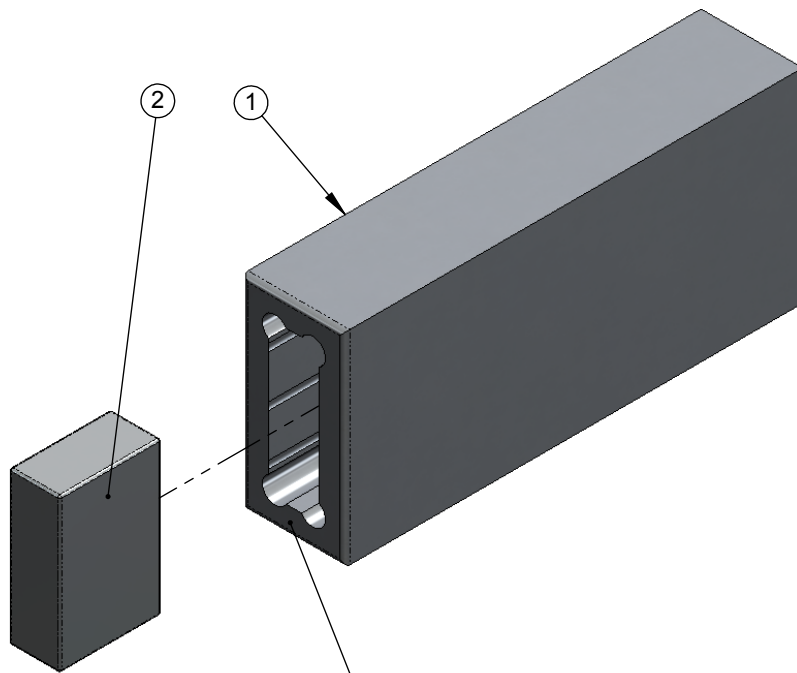


ITEM	PART NO.	DESCRIPTION	QTY
1	10-0300-07	MAIN PLATE RH	1
2	11-0324-01	MOTOR PLATE CLAMP	1
3	11-0333-01	HOPPER STANDOFF T4	2
4	11-0334-01	TIGHTENING BLOCK PIN	1
5	11-0410-01	OUTER HANDLE T4	1
6	11-0411-01	INNER HANDLE T4	1
7	13-0031-00	BOLT BHCS SS 1/4-20 X 3/4	6
8	13-0090-00	BOLT BHCS SS M6-1 X 25	2
9	13-0106-00	LEVER BLACK 1/4-20 X 1 X 1-5/8 HANDLE	1
10	13-0121-00	NUT NYLOC THIN SS 1/4-20 X .215	1
11	13-0325-00	BEARING ROLLER BLACK 25OD X 6ID X 12MM	4
12	13-0340-00	BOLT BHCS SS #8-32 X 1/2	2
13	13-0350-00	BOLT BHCS SS M6-1 X 20	2
14	13-0361-00	COMPRESSION SPRING .30 OD X .50	1
15	21-0022-00	DECAL, DO NOT LUBRICATE DRIVE WHEEL T4	1
16	24-0016-00	MAGNET HOLDER ASSY T4	3



TITLE:
MAIN PLATE ASSY RH T4

DWG. NO.
24-0310-02



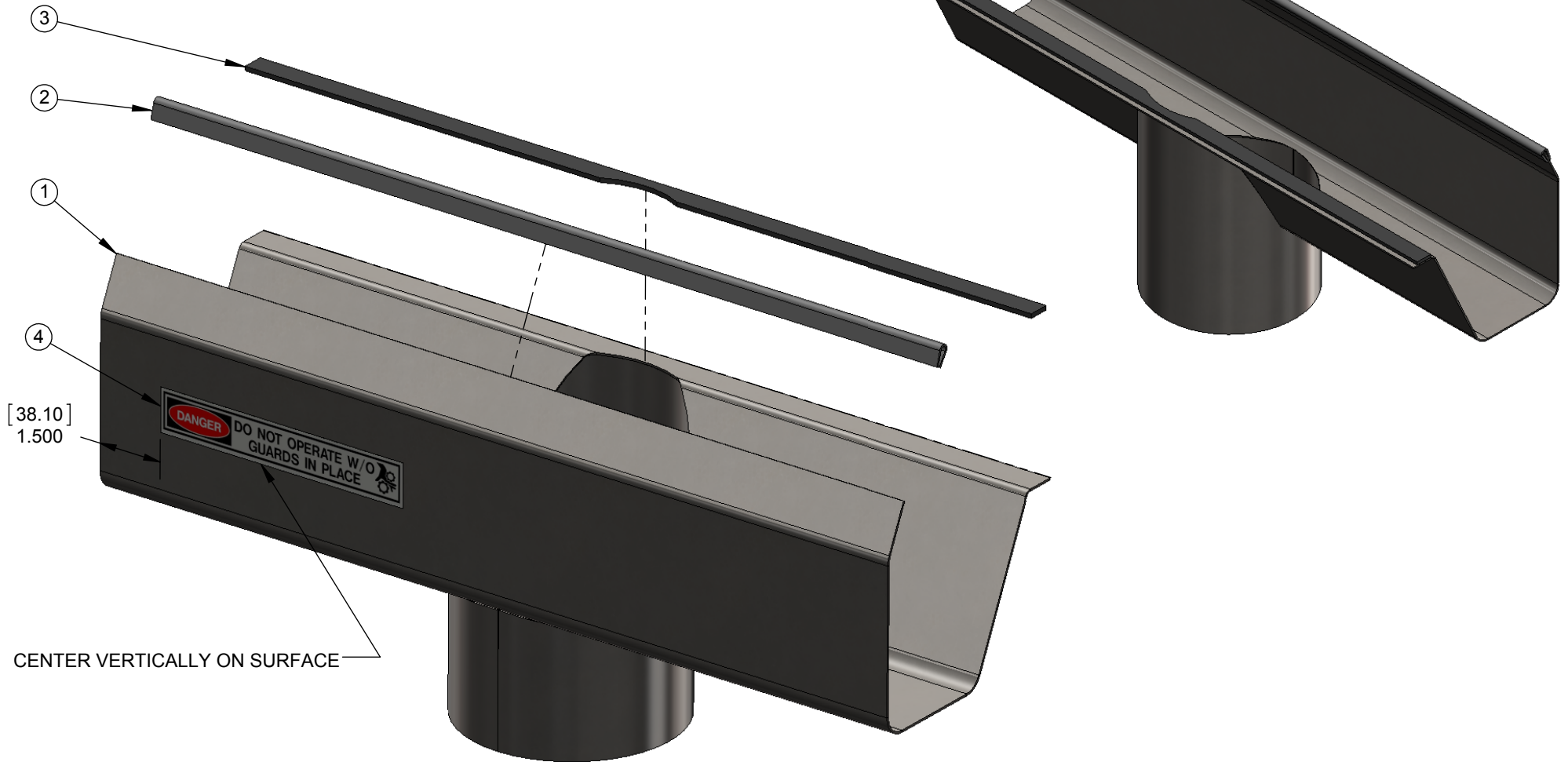
NOTE:
 PRESS IN UNTIL MAGNET IS FLUSH WITH FRONT FACE
 NOTE THAT THE MAGNETS ARE BRITTLE AND MAY
 CRACK IF PRESSED IN UNEVENLY OR ROUGHLY

ITEM	PART NO.	DESCRIPTION	QTY
1	11-0328-03	MAGNET RETAINER	1
2	13-0362-00	NEODYMIUM MAGNET .75 X .5 X .25	1



TITLE:
 MAGNET HOLDER ASSY T4

DWG. NO.
 24-0016-00



[38.10]
1.500

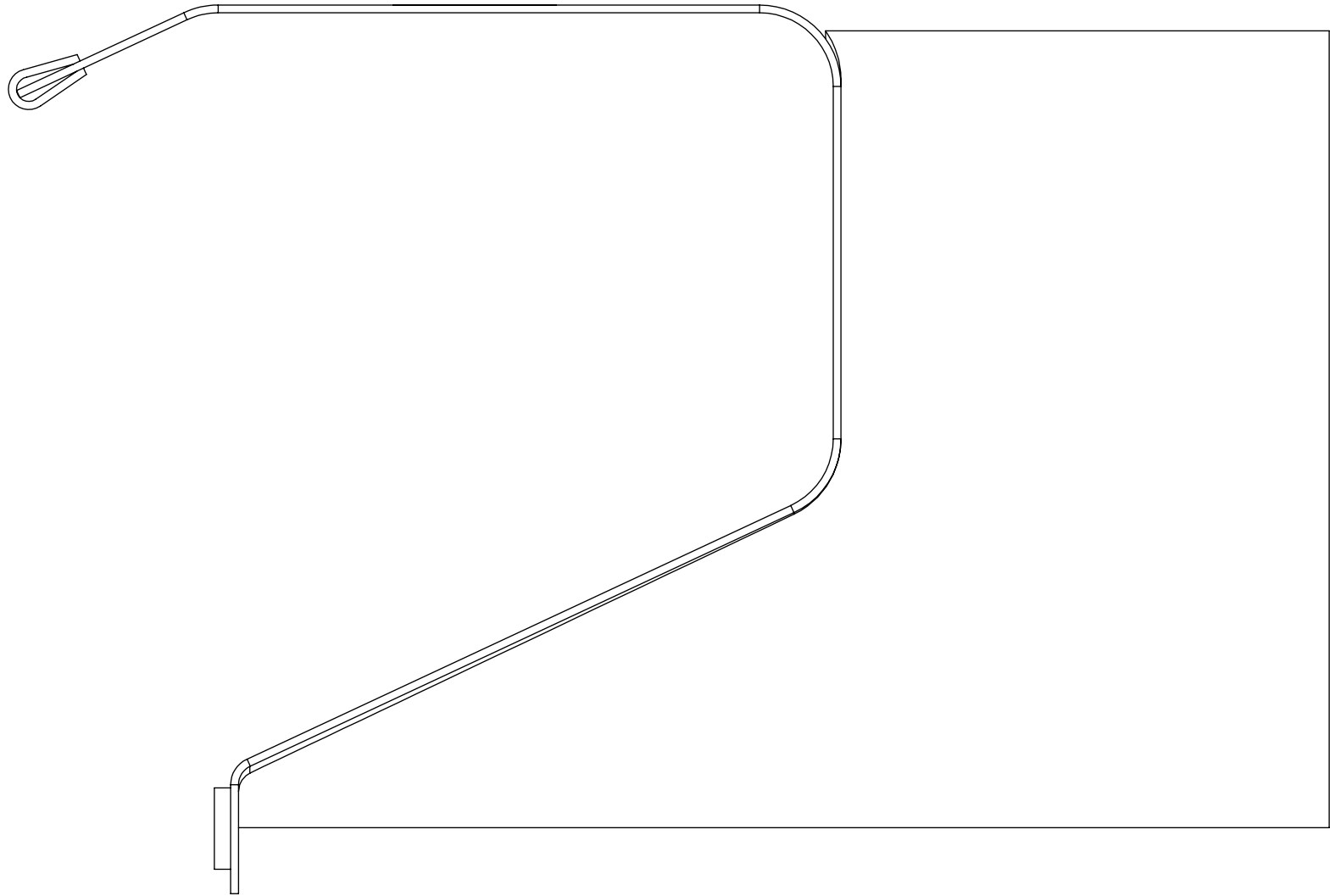
CENTER VERTICALLY ON SURFACE

ITEM	PART NO.	DESCRIPTION	QTY
1	11-0052-00	SHROUD WDMT	1
2	17-0015-00	SHROUD PLASTIC TRIM T4	1
3	17-0016-00	WEATHER STRIP 1/2 X 19.5	1
4	21-0009-00	DECAL, DANGER - DO NOT OPERATE T4	1

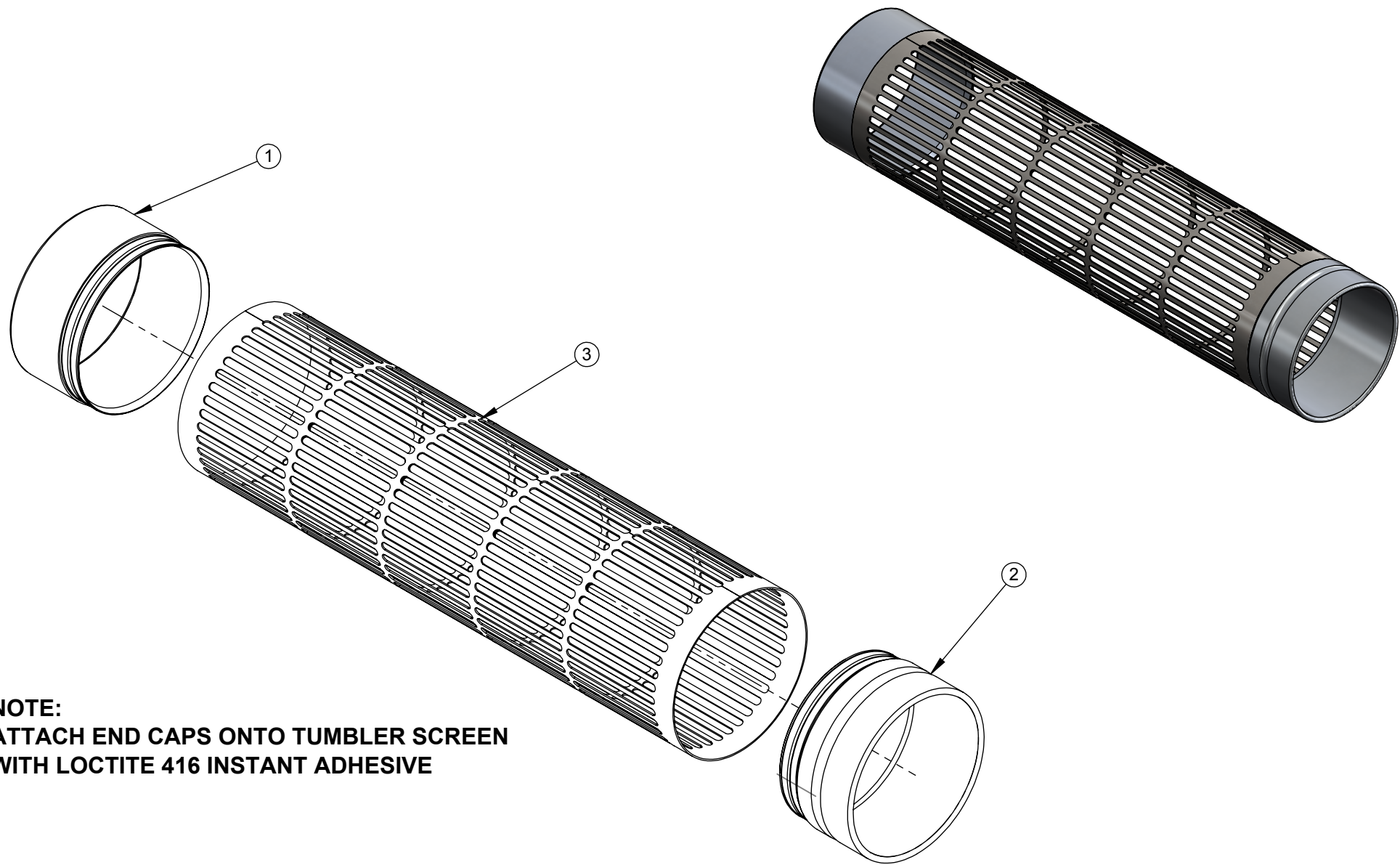


TITLE:
SHROUD ASSY

DWG. NO.
24-0300-00



SIDE PROFILE - SCALE 1:1



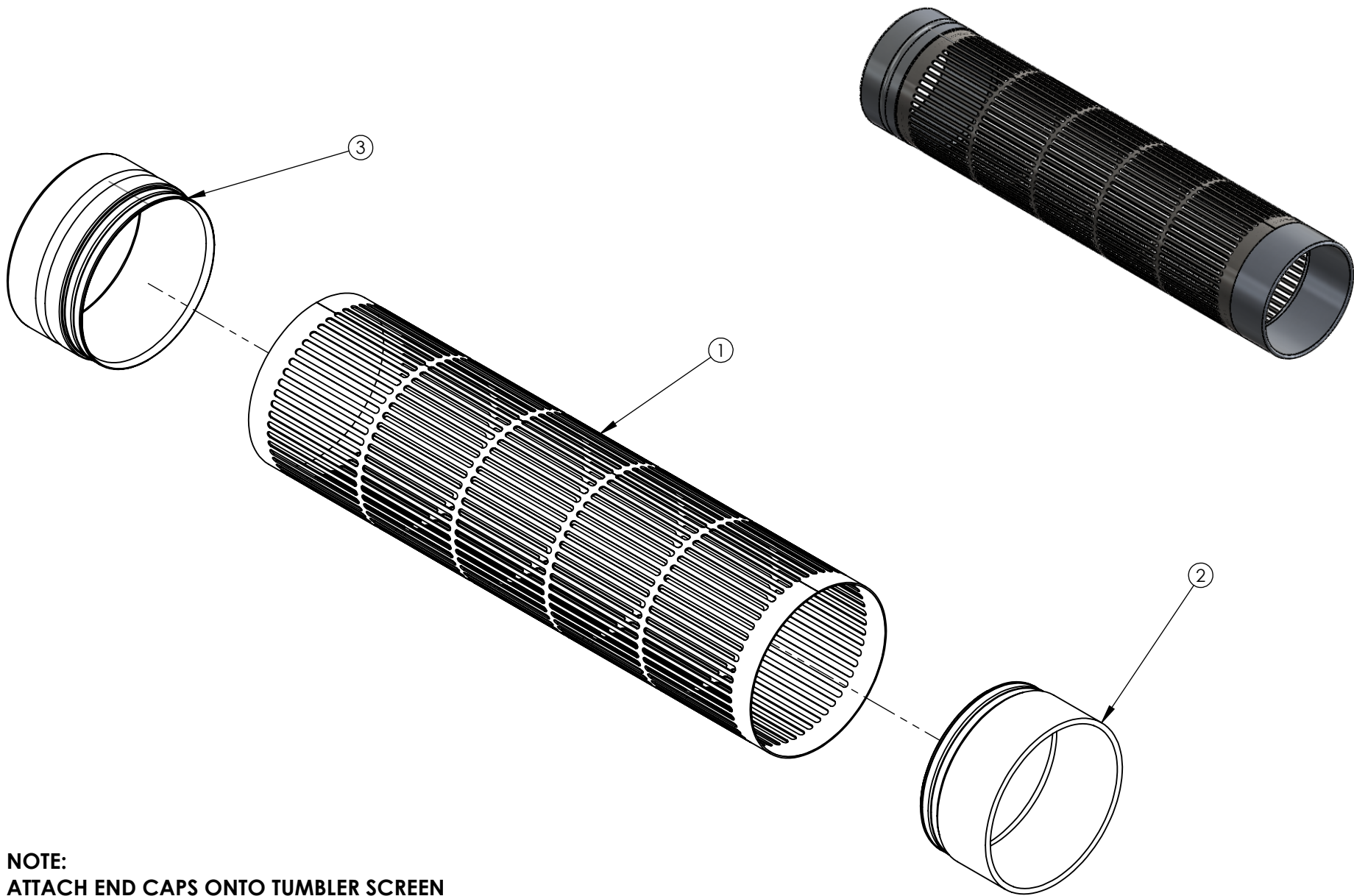
**NOTE:
ATTACH END CAPS ONTO TUMBLER SCREEN
WITH LOCTITE 416 INSTANT ADHESIVE**

ITEM	PART NO.	DESCRIPTION	QTY
1	11-0303-04	TUMBLER ENDCAP FREE END	1
2	11-0304-05	TUMBLER ENDCAP DRIVE END	1
3	18-0200-03	TUMBLER SCREEN 40 X 1/4 SLOT T4	1



TITLE:
TUMBLER ASSY T4, SS-EP-AD 40 X 1/4 SLOT

DWG. NO.
24-0304-01



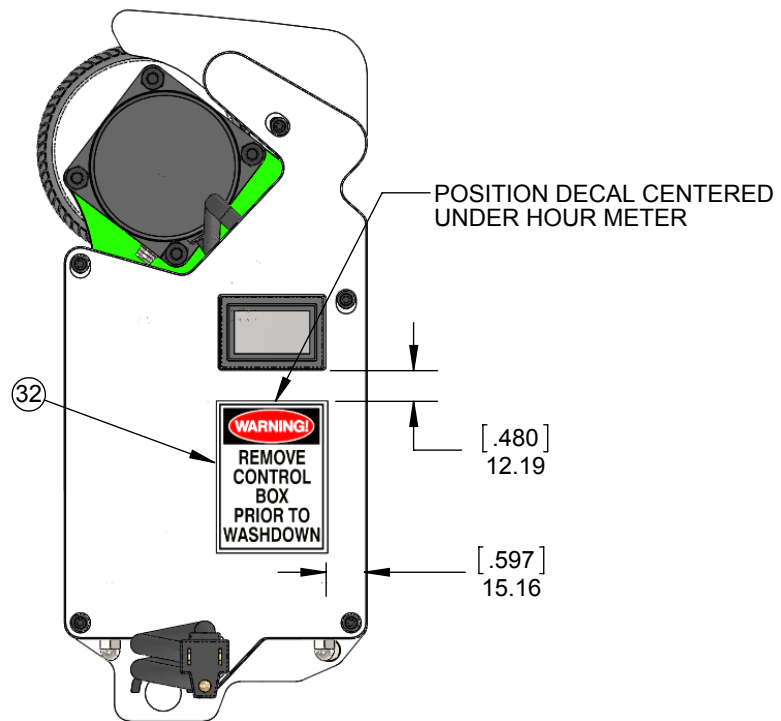
**NOTE:
ATTACH END CAPS ONTO TUMBLER SCREEN
WITH LOCTITE H4710 INSTANT ADHESIVE**

ITEM	PART NO.	DESCRIPTION	QTY
1	11-0011-00	TUMBLER SCREEN 51 X 3/16 SLOT T4	1
2	11-0303-04	TUMBLER ENDCAP FREE END	1
3	11-0304-05	TUMBLER ENDCAP DRIVE END	1

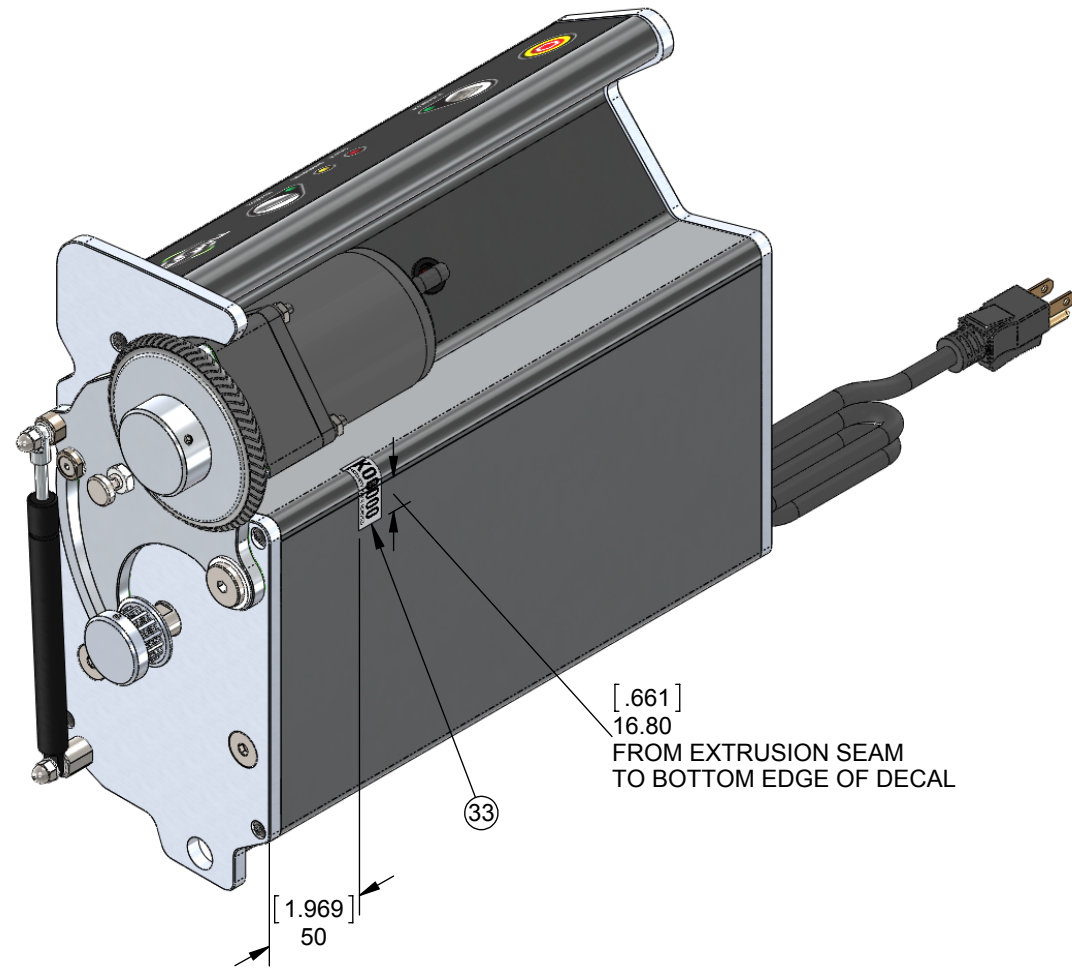


TITLE:
DRY TUMBLER ASSY T4, SS-EP-AD 51 SLOT

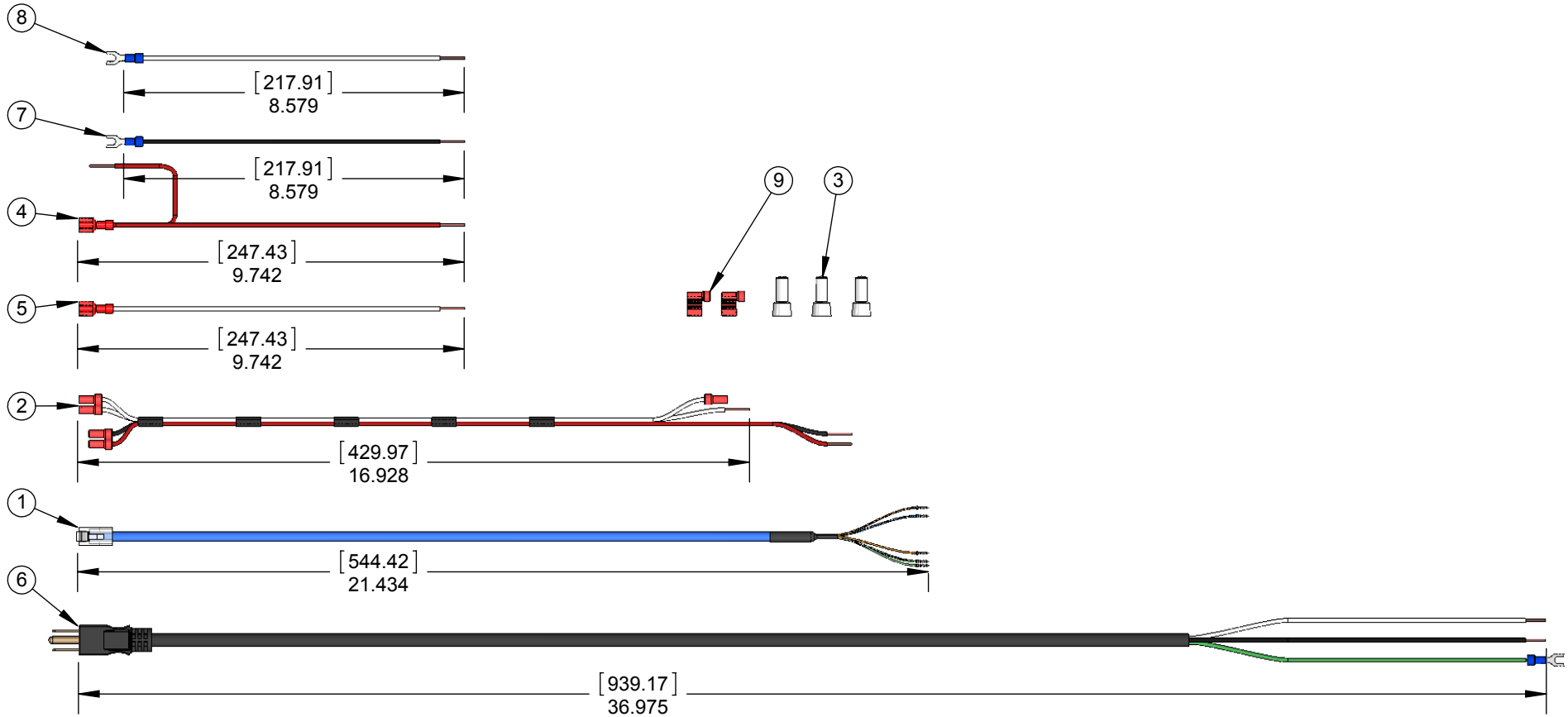
DWG. NO.
24-0143-00



LEFT SIDE VIEW



DECAL PLACEMENT

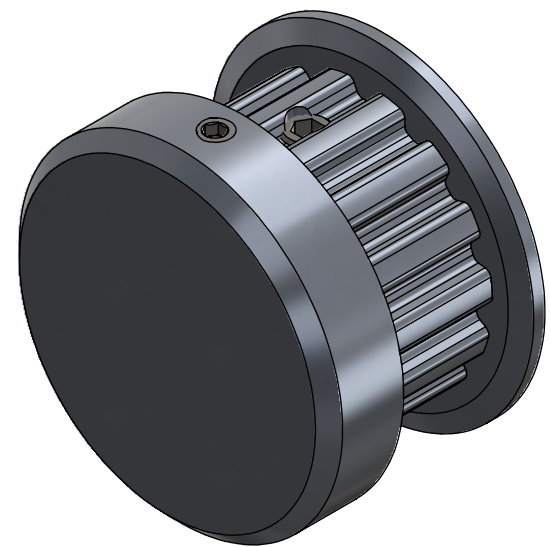
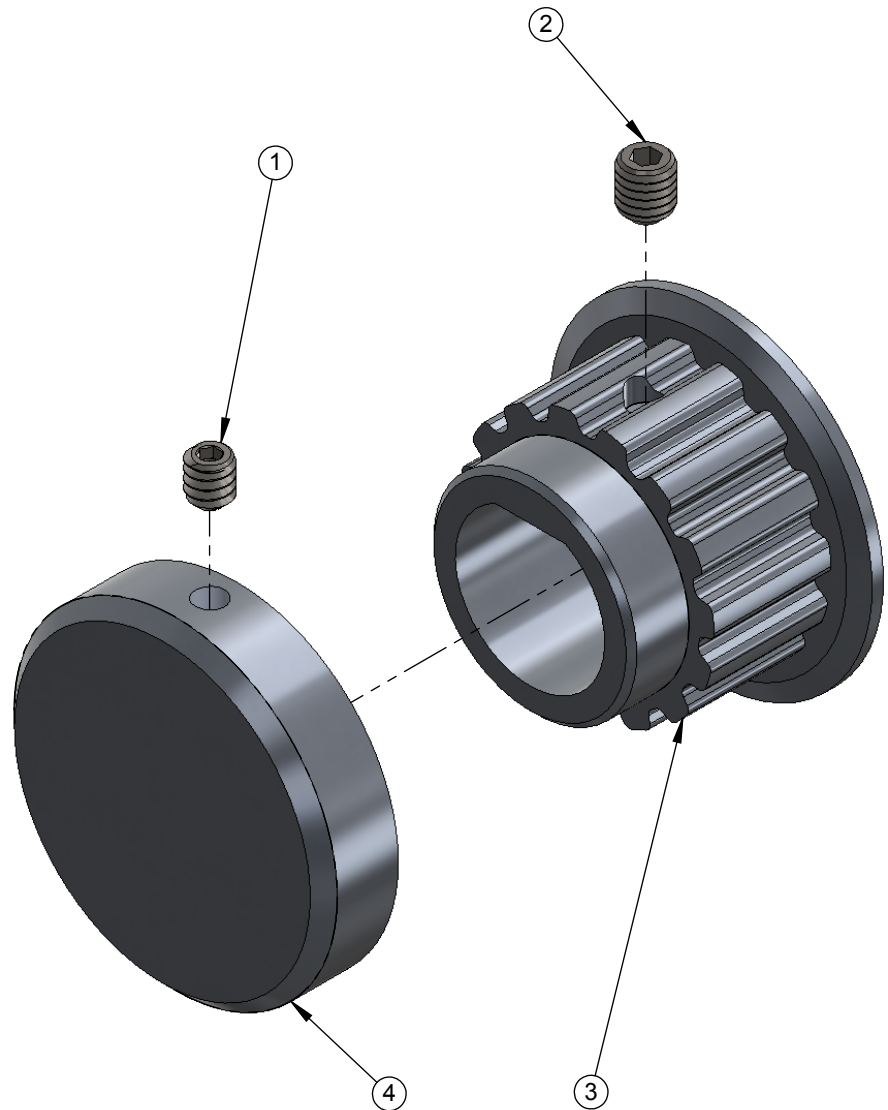


ITEM	PART NO.	DESCRIPTION	QTY
1	15-0030-00	DATA CABLE T4	1
2	15-0034-01	PCB WIRING HARNESS	1
3	15-0035-00	WIRE CONNECTOR 10-12AWG	3
4	15-0037-00	HOUR METER RED WIRE w CONNECTOR	1
5	15-0038-00	HOUR METER WHITE WIRE w CONNECTOR	1
6	15-0039-00	CONTROL BOX POWER CORD T4	1
7	15-0041-01	CONTROLLER BLACK WIRE w CONNECTOR	1
8	15-0042-01	CONTROLLER WHITE WIRE w CONNECTOR	1
9	15-0047-00	RIGHT ANGLE CONNECTOR 18-22AWG RED - NARROW	2



TITLE:
WIRING KIT T4

DWG. NO.
15-0043-01

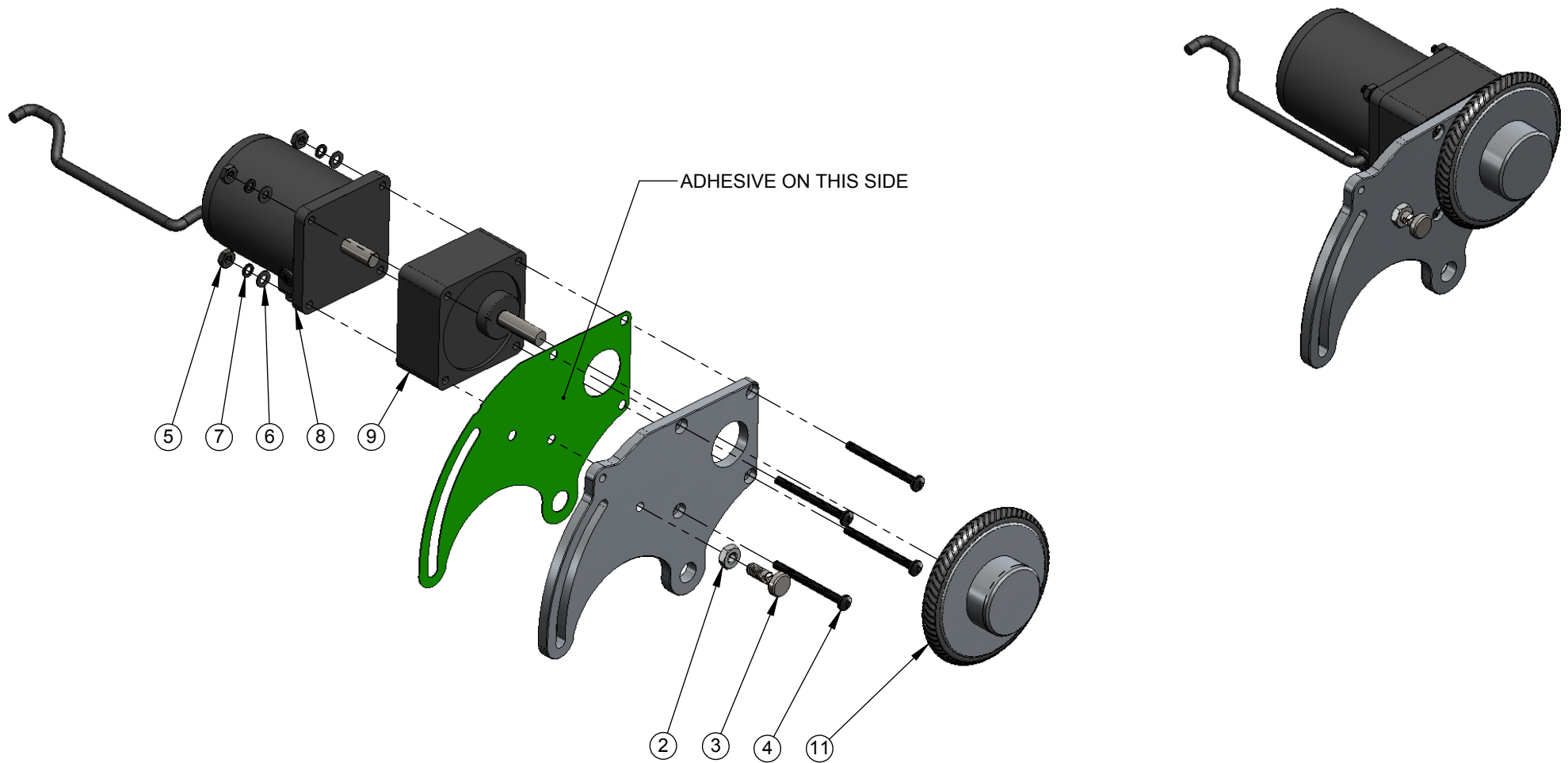


ITEM	PART NO.	DESCRIPTION	QTY
1	13-0132-00	BOLT SET FLAT SS #6-32 X 5/32	1
2	13-0084-00	BOLT SET SS #8-32 X 316	1
3	19-0010-03	SMALL MOTOR PULLEY T4	1
4	19-0011-02	SMALL MOTOR PULLEY END CAP T4	1



TITLE:
SMALL MOTOR PULLEY ASSY T4

DWG. NO.
19-0006-03



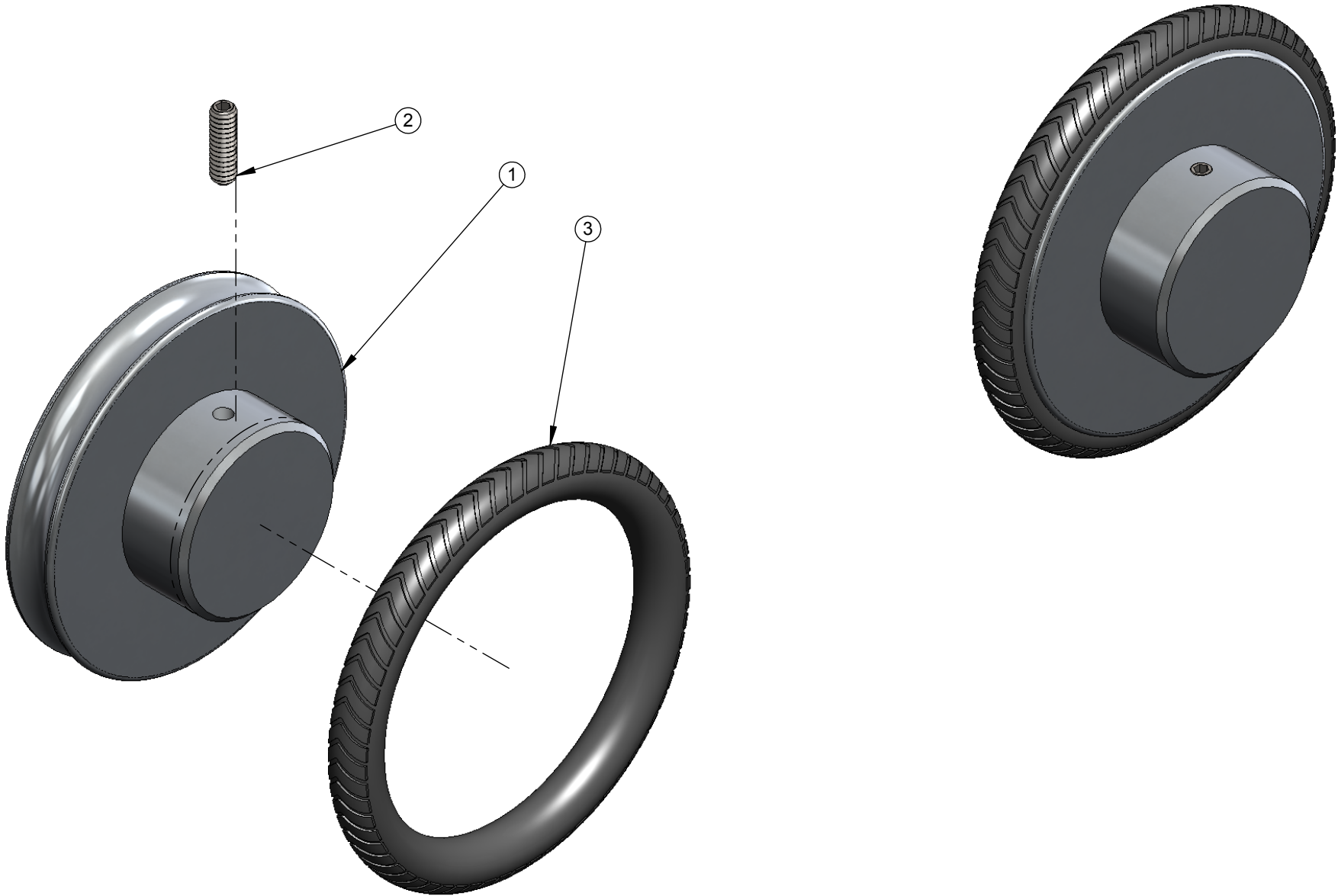
NOTE: ITEMS 3, 4, 5, AND 6 (NUTS, BOLTS, AND WASHERS) COME WITH ITEM 8 - TUMBLER MOTOR

ITEM	PART NO.	DESCRIPTION	QTY
1	11-0416-05	TUMBLER MOTOR PLATE T4	1
2	13-0082-00	NUT HEX SS 14-20 X .16	1
3	13-0101-00	PLUNGER SS 1/4-20 X .400 X .125 STROKE	1
4	13-0136-00	BOLT PHCS BLACK #8-32 X 1-15/16	4
5	13-0137-00	NUT HEX BLACK #8-32 X .13	4
6	13-0139-00	WASHER FLAT BLACK .174 ID X .347 OD X .032	4
7	13-0140-00	WASHER SPLIT BLACK .167 ID X .283 OD X .041	4
8	15-0031-00	TUMBLER MOTOR T4	1
9	15-0032-00	TUMBLER MOTOR GEARHEAD T4	1
10	17-0012-02	TUMBLER PLATE SLIDER	1
11	24-0015-00	TUMBLER DRIVE WHEEL ASSY T4	1



TITLE:
TUMBLER MOTOR ASSY T4

DWG. NO.
24-0014-00

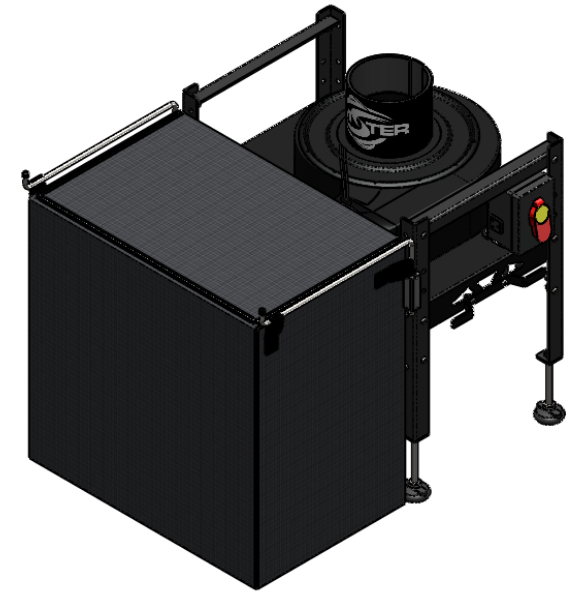
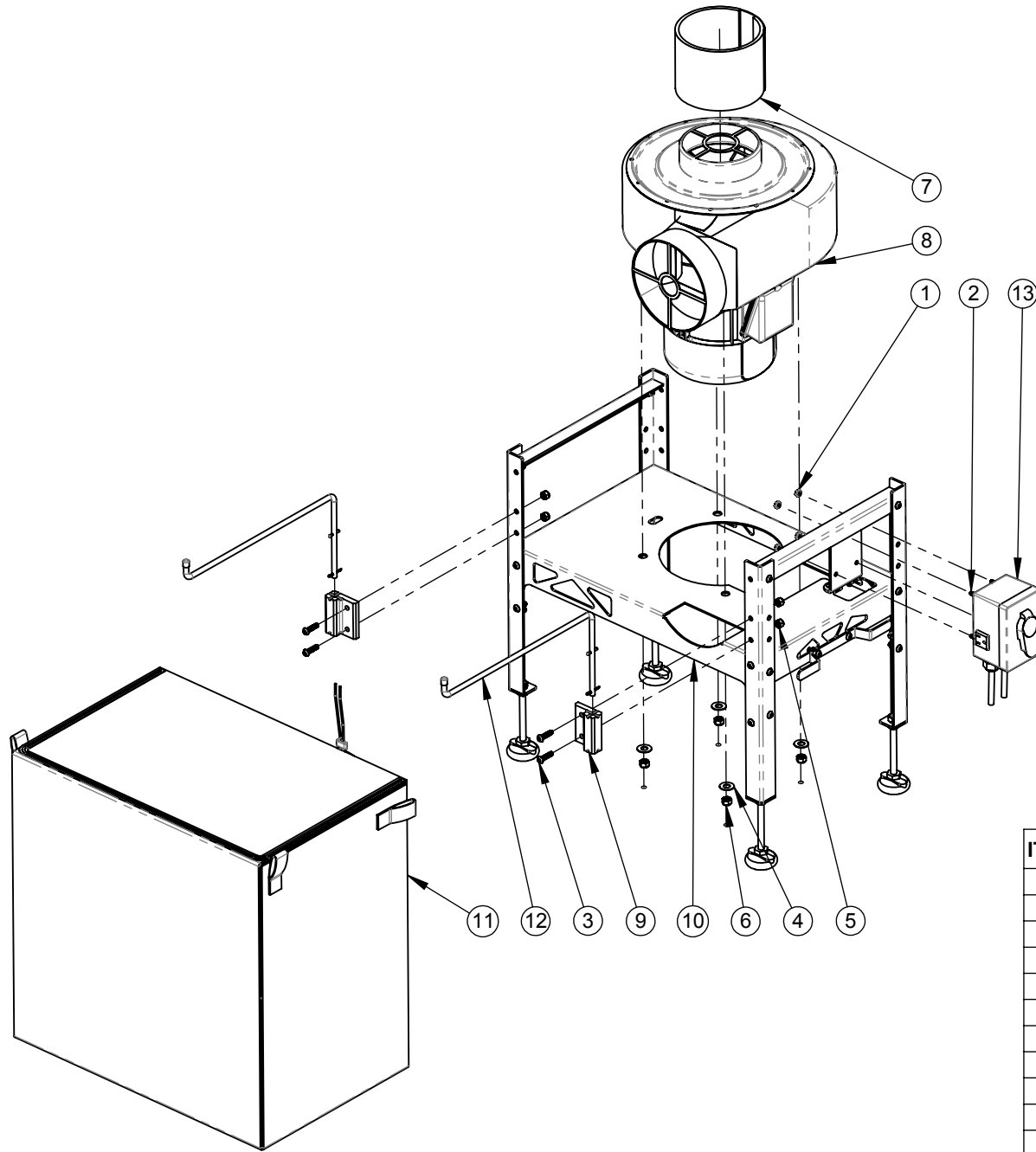


ITEM	PART NO.	DESCRIPTION	QTY
1	11-0322-04	TUMBLER MOTOR DRIVE WHEEL	1
2	13-0349-00	BOLT SET CUP POINT SS #10-24 X .625	1
3	19-0007-01	CHEVRON DRIVE WHEEL T4	1



TITLE:
TUMBLER DRIVE WHEEL ASSY T4

DWG. NO.
24-0015-00

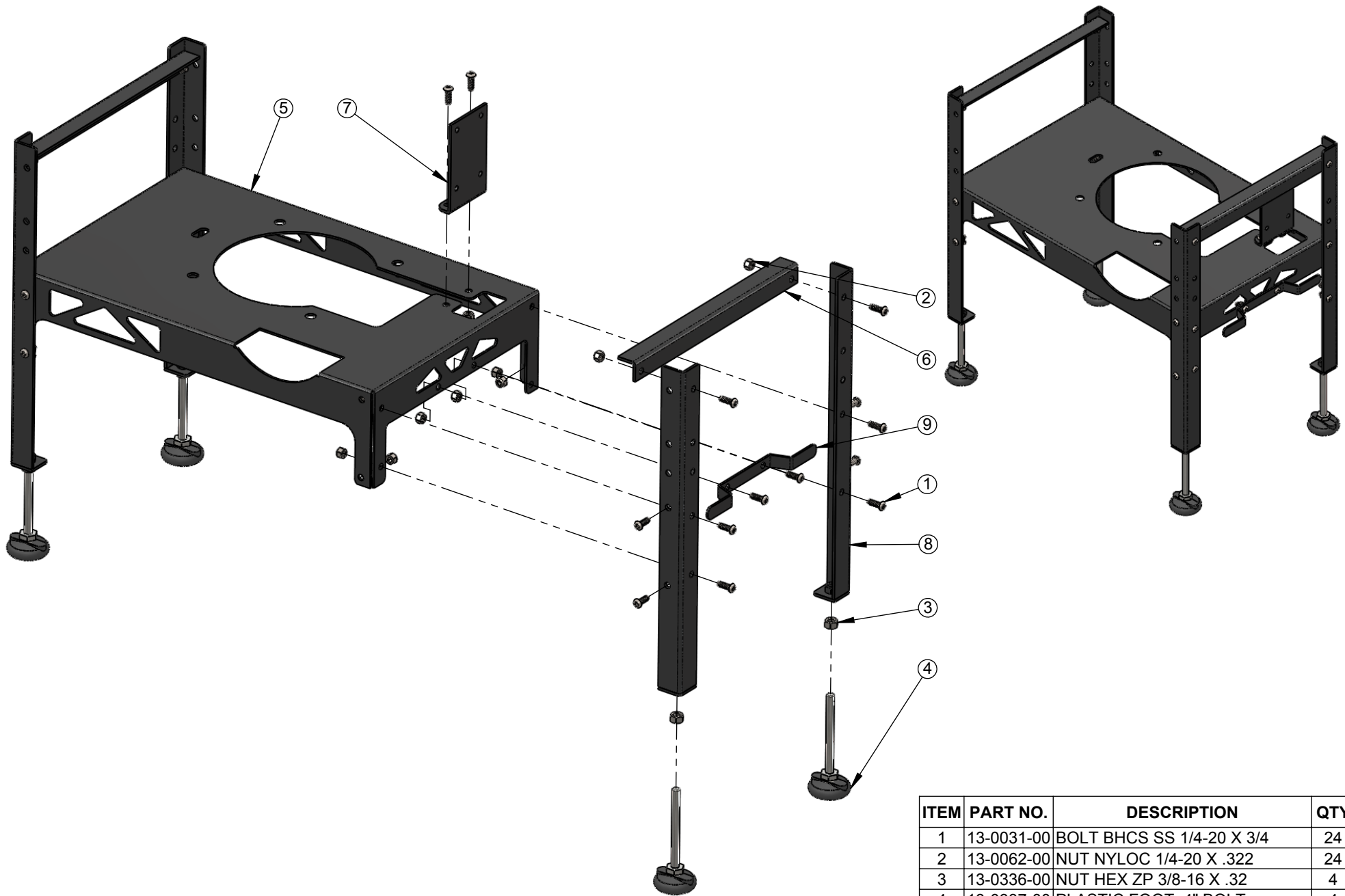


ITEM	PART NO.	DESCRIPTION	QTY
1	13-0026-00	NUT TOOTH ZP #10-24 X .157	4
2	13-0027-00	BOLT PHILLIPS PHCS ZP #10-24 X 1/2	4
3	13-0032-00	BOLT BHCS SS 1/4-20 X 1	4
4	13-0052-00	WASHER FLAT SS 13/32 ID X 7/8 OD X .047	4
5	13-0062-00	NUT NYLOC 1/4-20 X .322	4
6	13-0064-00	NUT NYLOC SS 5/16-18 X .353	4
7	17-0013-00	NEOPRENE CUFF	1
8	23-0151-02	VACUUM, 1HP, 115V DUST COLLECTOR	1
9	23-0160-03	BAG ARM BLOCK	2
10	23-0165-03	VACUUM FRAME ASSY	1
11	23-0166-04	VACUUM BAG ASSY	1
12	23-0168-01	BAG ARM ASSY	2
13	23-0169-00	VACUUM SWITCH BOX	1



TITLE:
VACUUM FULL ASSY

DWG. NO.
23-0170-01



ITEM	PART NO.	DESCRIPTION	QTY
1	13-0031-00	BOLT BHCS SS 1/4-20 X 3/4	24
2	13-0062-00	NUT NYLOC 1/4-20 X .322	24
3	13-0336-00	NUT HEX ZP 3/8-16 X .32	4
4	13-0337-00	PLASTIC FOOT, 4" BOLT	4
5	23-0155-06	VAC STAND MOTOR TRAY	1
6	23-0158-03	VAC STAND CROSS BAR	2
7	23-0159-03	RELAY BOX BRACKET	1
8	23-0163-01	VAC STAND LEG WDMT	4
9	23-0167-04	VACUUM CORD HOLDER	1



TITLE:
VACUUM FRAME ASSY

DWG. NO.
23-0165-03