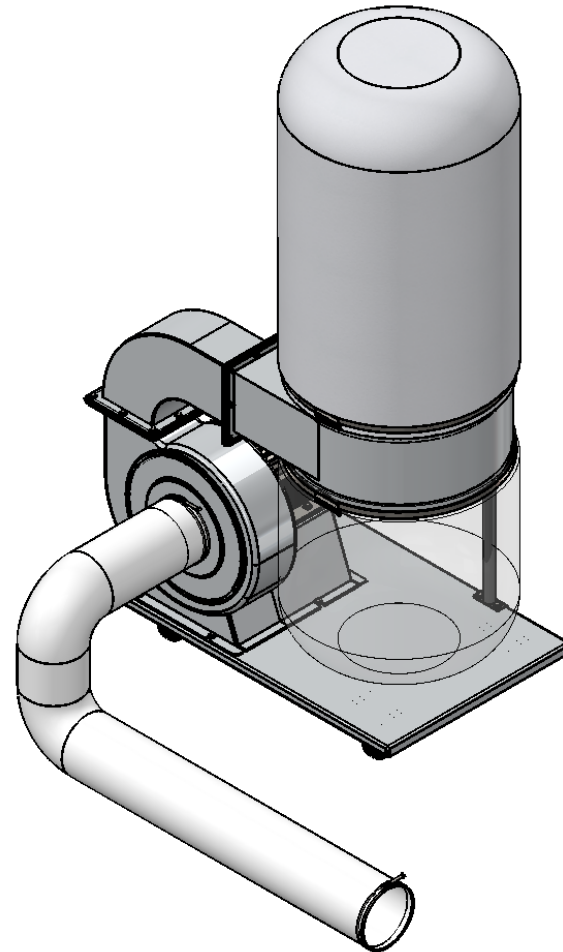
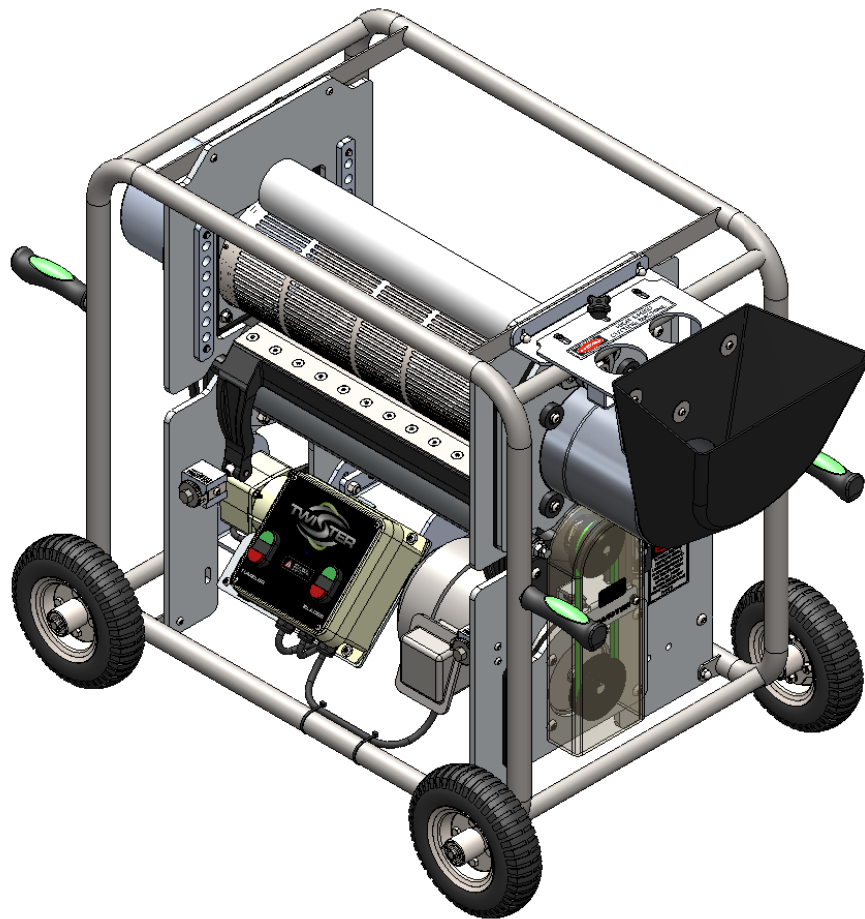
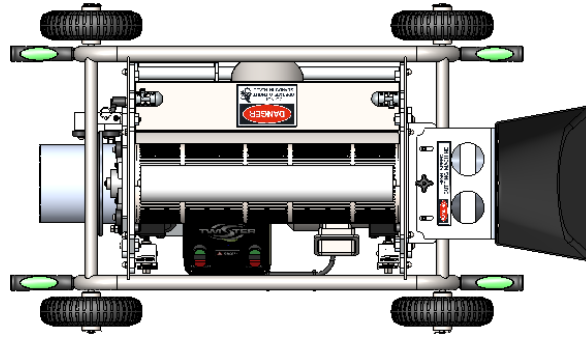
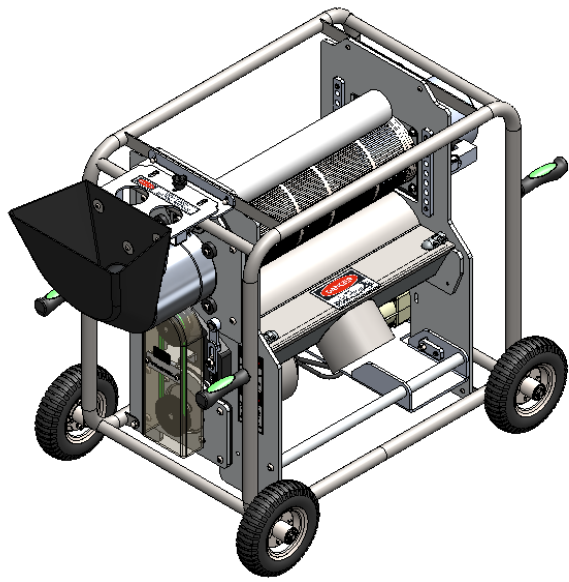
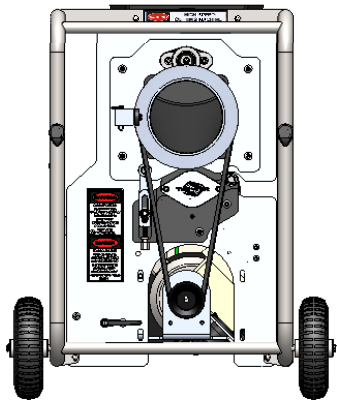
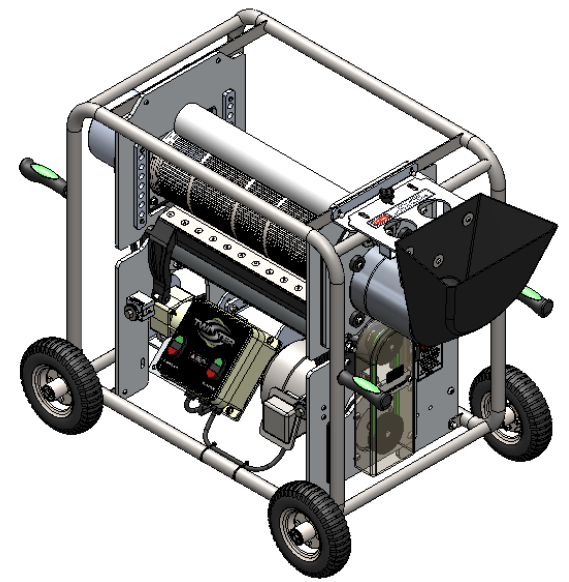


RETAILER INFORMATION PACKAGE (US)

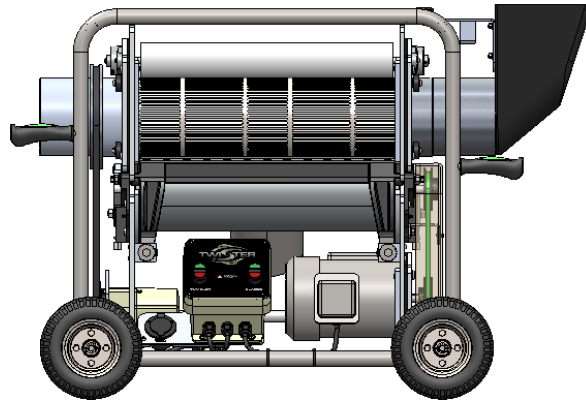




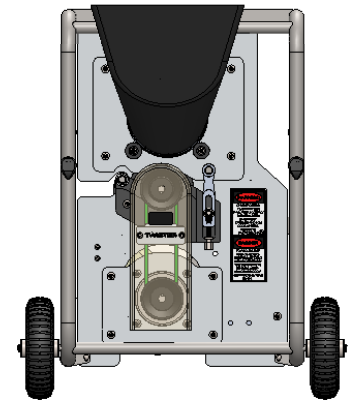
TOPVIEW



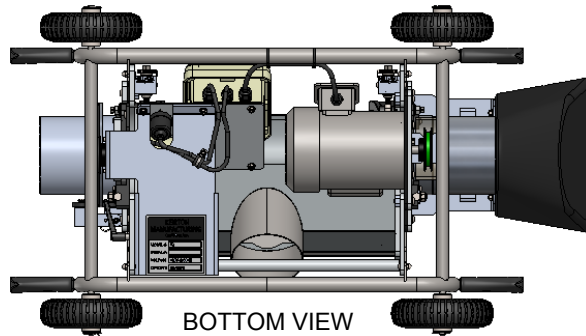
LEFT VIEW



FRONT VIEW



RIGHT VIEW

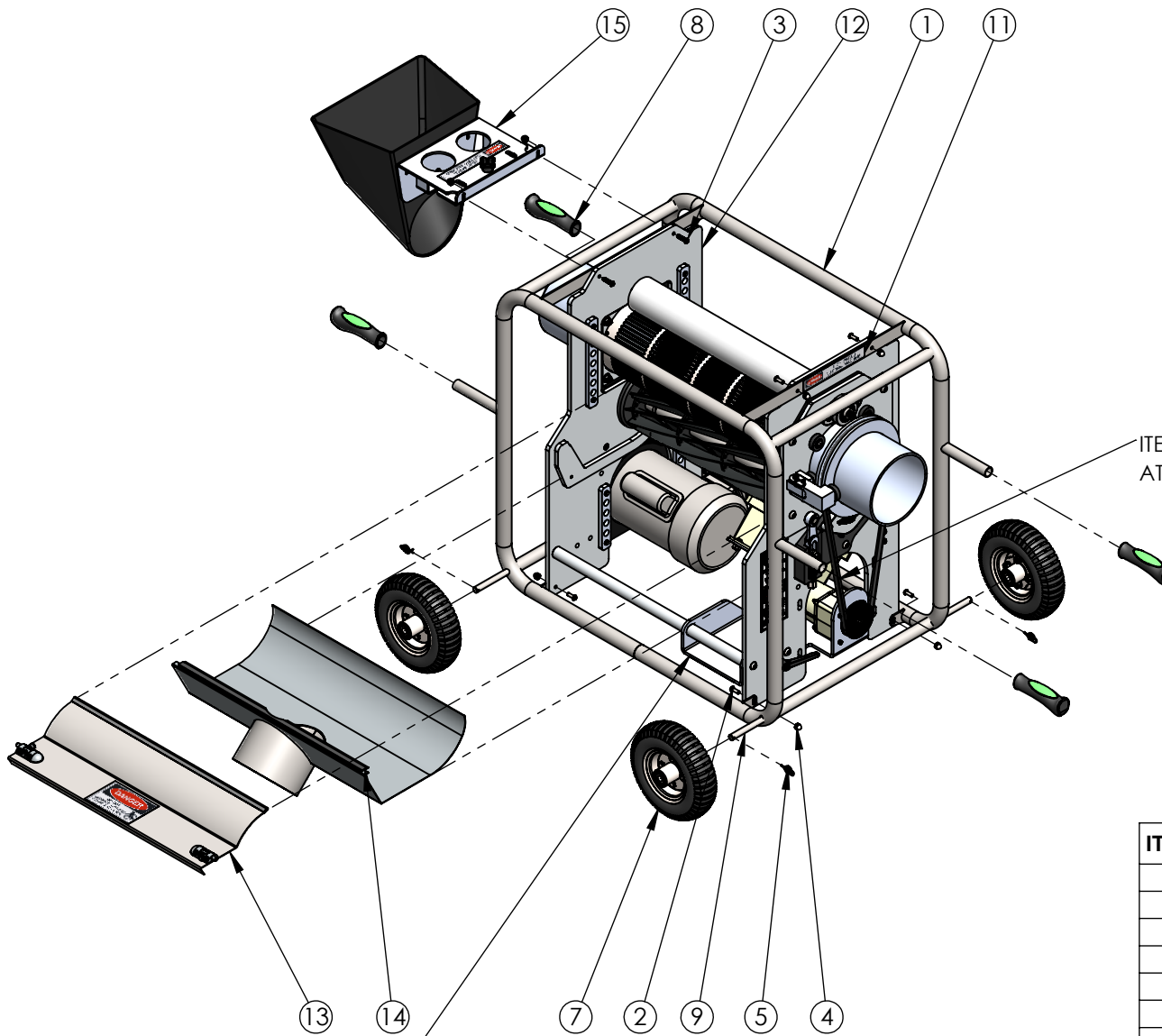


BOTTOM VIEW



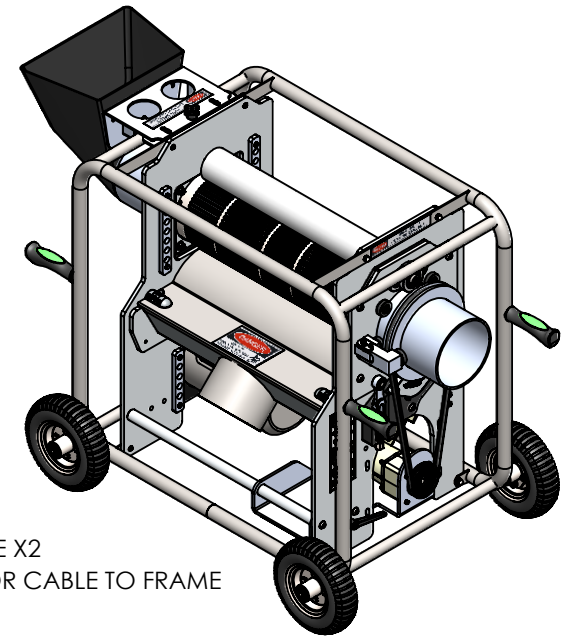
TITLE:

DWG. NO.
24-9000-01



ITEM 6 - CABLE TIE X2
ATTACHES MOTOR CABLE TO FRAME

ITEM 10 - DECAL
GETS PLACED ON UNDERSIDE
OF ELECTRICAL ASSY

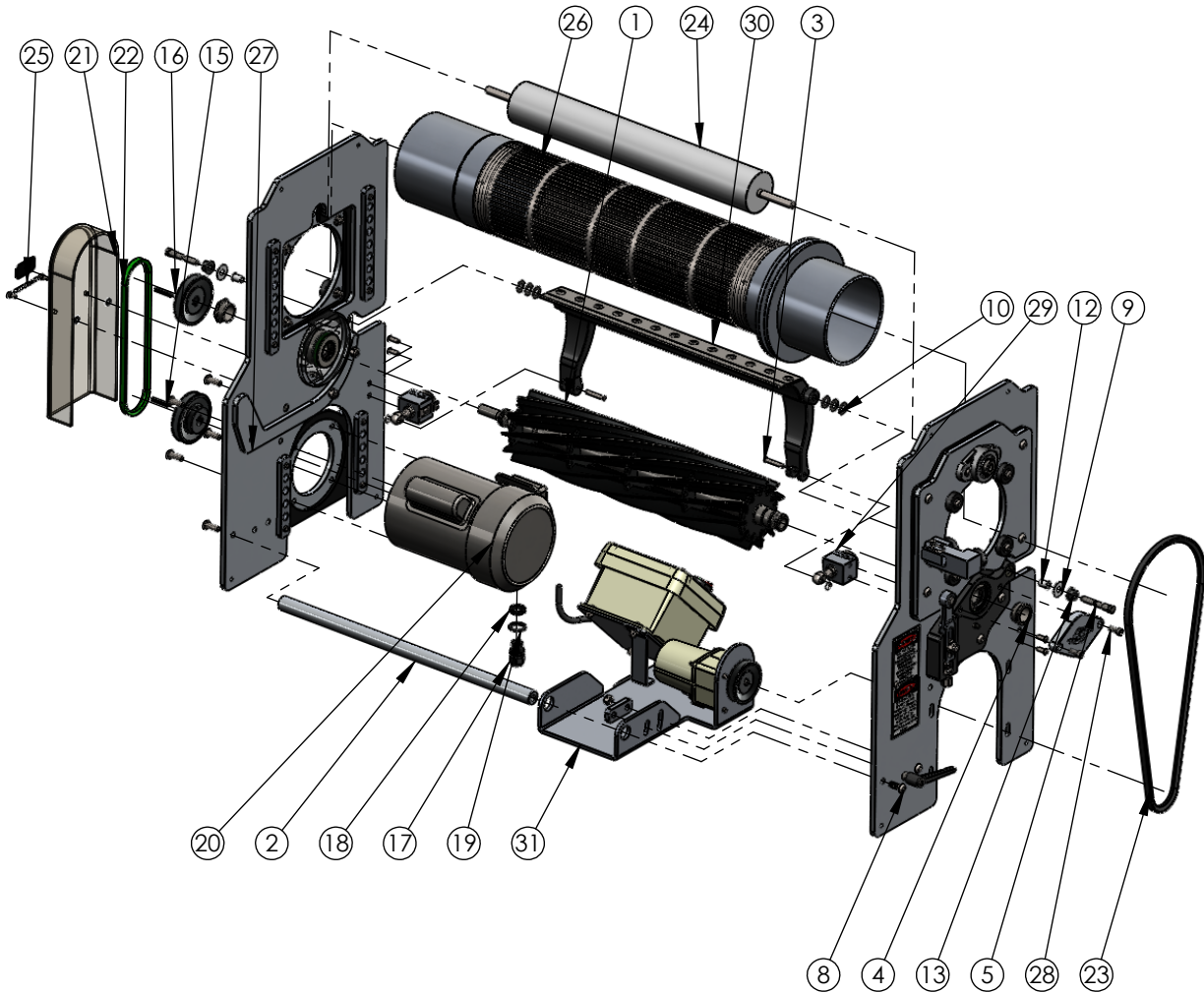
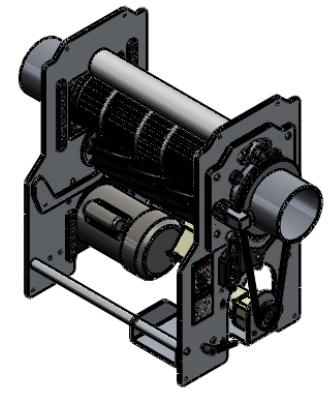


ITEM	PART NO.	DESCRIPTION	QTY
1	11-0002-00	FRAME SS EP T2	1
2	13-0031-00	BOLT BHCS SS 1/4-20 X 3/4	6
3	13-0032-00	BOLT BHCS SS 1/4-20 X 1	2
4	13-0065-00	NUT ACORN SS 1/4-20 X .476	8
5	13-0110-00	COTTER PIN LOCKING 1/2 DIA. X 1-1/2	4
6	15-0114-00	CABLE TIE 8" BLACK	2
7	17-0004-00	WHEEL, PNEUMATIC 8"	4
8	17-0093-00	HANDLE GRIP PAIR	2
9	18-0095-00	WHEEL AXLE	2
10	21-0113A-00	DECAL, SERIAL NO FOR MACHINE - US	1
11	21-0117-00	DECAL, WARNING - HIGH SPEED CUTTING	1
12	24-0007-01	CORE COMPONENTS ASSY	1
13	24-0127-00	UPPER SHROUD ASSY	1
14	24-0128-00	LOWER SHROUD ASSY	1
15	24-0135-00	HOPPER ASSY	1



TITLE:
TWISTER T2 A

DWG. NO.
24-9000-01

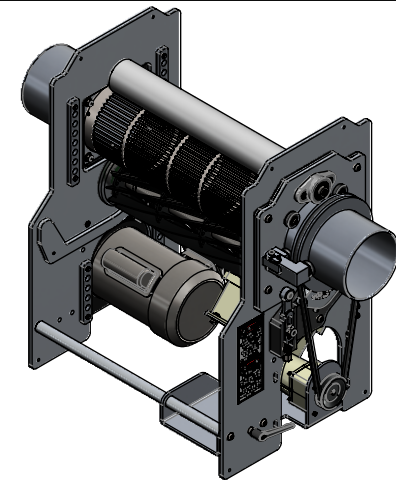
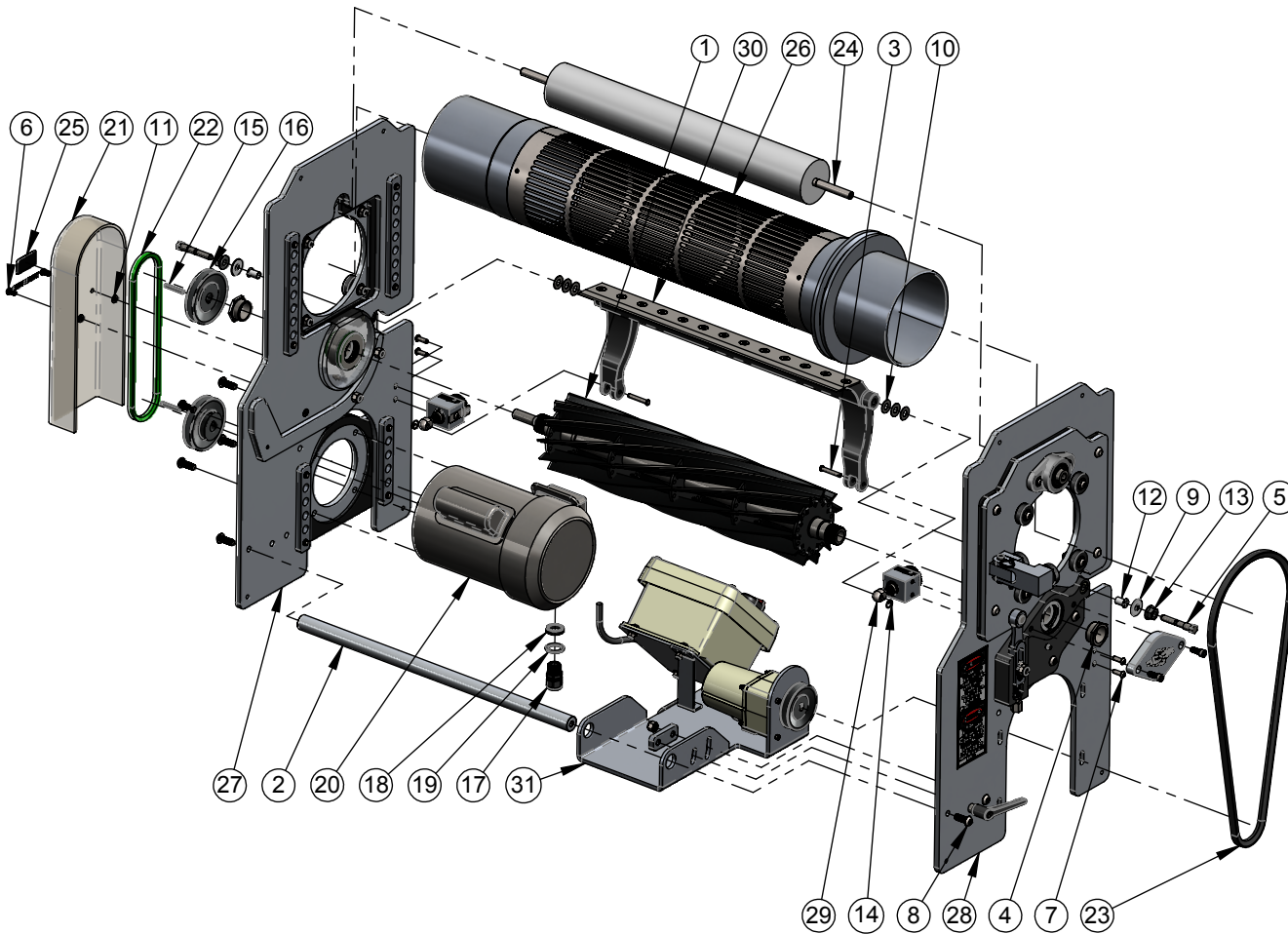


ITEM	PART NO.	DESCRIPTION	QTY
1	11-0012-02	11 BLADE REEL, HOLLOW SHAFT T2	1
2	11-0023-00	SPREADER BAR	1
3	11-0030-00	BEDBAR CLEVIS PIN	2
4	11-0032-00	REEL BLADE END NUT	2
5	11-0137-02	BEDBAR PIVOT BOLT	2
6	13-0030-00	BOLT BHCS SS 1/4-20 X 1/2	2
7	13-0031-00	BOLT BHCS SS 1/4-20 X 3/4	4
8	13-0038-00	BOLT BHCS SS 3/8-16 X 1	6
9	13-0045-00	WASHER NYLON 25/64 ID X 1.25 OD X .073	2
10	13-0052-00	WASHER FLAT SS 13/32 ID X 7/8 OD X .047	6
11	13-0055-00	WASHER RUBBER 1/4 ID X 1/2 OD X .06	2
12	13-0059-00	BUSHING NYLON 3/8 ID X 7/16 OD X .715	2
13	13-0068-00	NUT FLANGE ZP 716-20 X .469	2
14	13-0070-00	CIRCLE COTTER PIN 1/2 ID	2
15	13-0077-00	KEYSTOCK SS 3/16 X 3/16 X 1.5	2
16	14-0080-00	BK34 5/8" BLADE PULLEY	2
17	15-0088-00	LIQUID TIGHT CORDGRIP 1/2" 3231	1
18	15-0090-00	LOCKNUT 1/2" NPT 8463	1
19	15-0091-00	SEALING WASHER 1/2" 3260	1
20	16-0087-01	1HP BLADE MOTOR, T2	1
21	17-0090-00	REEL BELT COVER	1
22	19-0008-00	BLADE V-BELT TWISTLOC T2	1
23	19-0009-00	TUMBLER V-BELT	1
24	20-0109-00	NYLON BRUSH	1
25	21-0114-02	DECAL, BELT COVER T2	1
26	24-0003-00	TUMBLER ASSY, SS-EP-AD 62 SLOT	1
27	24-0120-00	SIDE PLATE ASSY RH T2	1
28	24-0121-00	SIDE PLATE ASSY LH T2	1
29	24-0125-01	TIGHTENING BLOCK ASSY T2	2
30	24-0126-00	BEDBAR ASSY T2	1
31	24-0150-00	CONTROL BOX - MOTOR - BRACKET ASSY	1



TITLE:
CORE COMPONENTS ASSY

DWG. NO.
24-0007-01

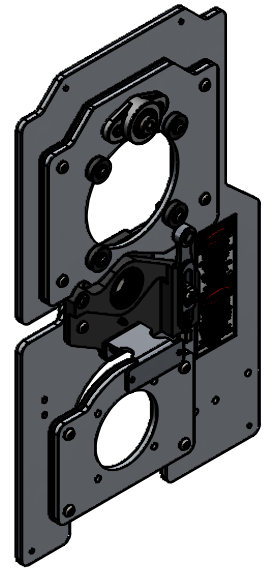
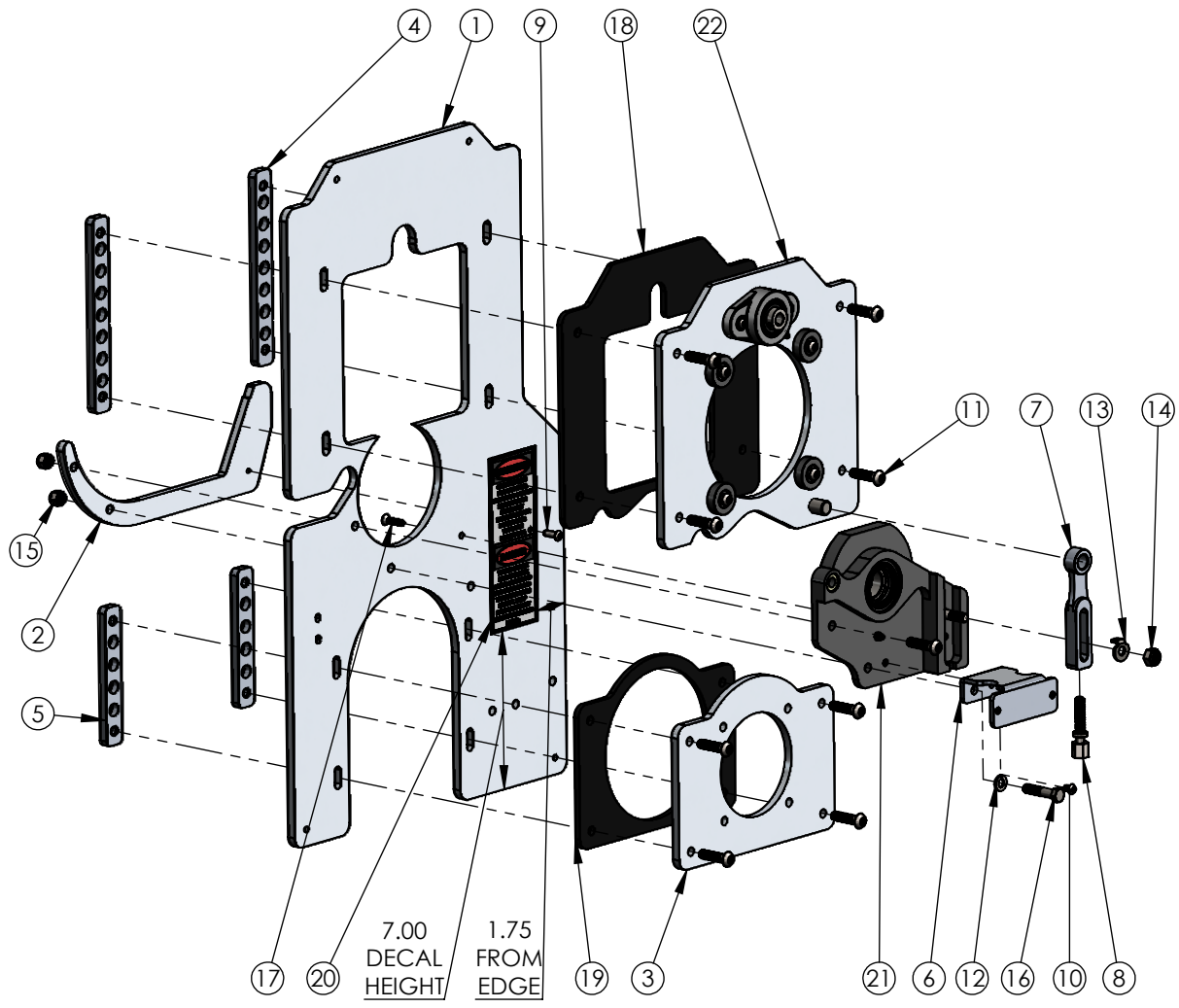


ITEM	PART NO.	DESCRIPTION	QTY
1	11-0012-02	11 BLADE REEL, HOLLOW SHAFT T2	1
2	11-0023-00	SPREADER BAR	1
3	11-0030-00	BEDBAR CLEVIS PIN	2
4	11-0032-00	REEL BLADE END NUT	2
5	11-0137-02	BEDBAR PIVOT BOLT	2
6	13-0030-00	BOLT BHCS SS 1/4-20 X 1/2	2
7	13-0031-00	BOLT BHCS SS 1/4-20 X 3/4	4
8	13-0038-00	BOLT BHCS SS 3/8-16 X 1	6
9	13-0045-00	WASHER NYLON 25/64 ID X 1.25 OD X .073	2
10	13-0052-00	WASHER FLAT SS 13/32 ID X 7/8 OD X .047	6
11	13-0055-00	WASHER RUBBER 1/4 ID X 1/2 OD X .06	2
12	13-0059-00	BUSHING NYLON 3/8 ID X 7/16 OD X .715	2
13	13-0068-00	NUT FLANGE ZP 7/16-20 X .469	2
14	13-0070-00	CIRCLE COTTER PIN 1/2 ID	2
15	13-0077-00	KEYSTOCK SS 3/16 X 3/16 X 1.5	2
16	14-0080-00	BK34 5/8" BLADE PULLEY	2
17	15-0088-00	LIQUID TIGHT CORDGRIP 1/2" 3231	1
18	15-0090-00	LOCKNUT 1/2" NPT 8463	1
19	15-0091-00	SEALING WASHER 1/2" 3260	1
20	16-0087-01	1HP BLADE MOTOR, T2	1
21	17-0090-00	REEL BELT COVER	1
22	19-0008-00	BLADE V-BELT TWISTLOC T2	1
23	19-0009-00	TUMBLER V-BELT	1
24	20-0109-00	NYLON BRUSH	1
25	21-0114-02	DECAL, BELT COVER T2	1
26	24-0131-03	TUMBLER ASSY, SS-EP-AD 50 SLOT	1
27	24-0120-00	SIDE PLATE ASSY RH T2	1
28	24-0121-00	SIDE PLATE ASSY LH T2	1
29	24-0125-01	TIGHTENING BLOCK ASSY T2	2
30	24-0126-00	BEDBAR ASSY T2	1
31	24-0150-00	CONTROL BOX - MOTOR - BRACKET ASSY	1



TITLE:
DRY CORE COMPONENTS ASSY T2

DWG. NO.
24-0008-00

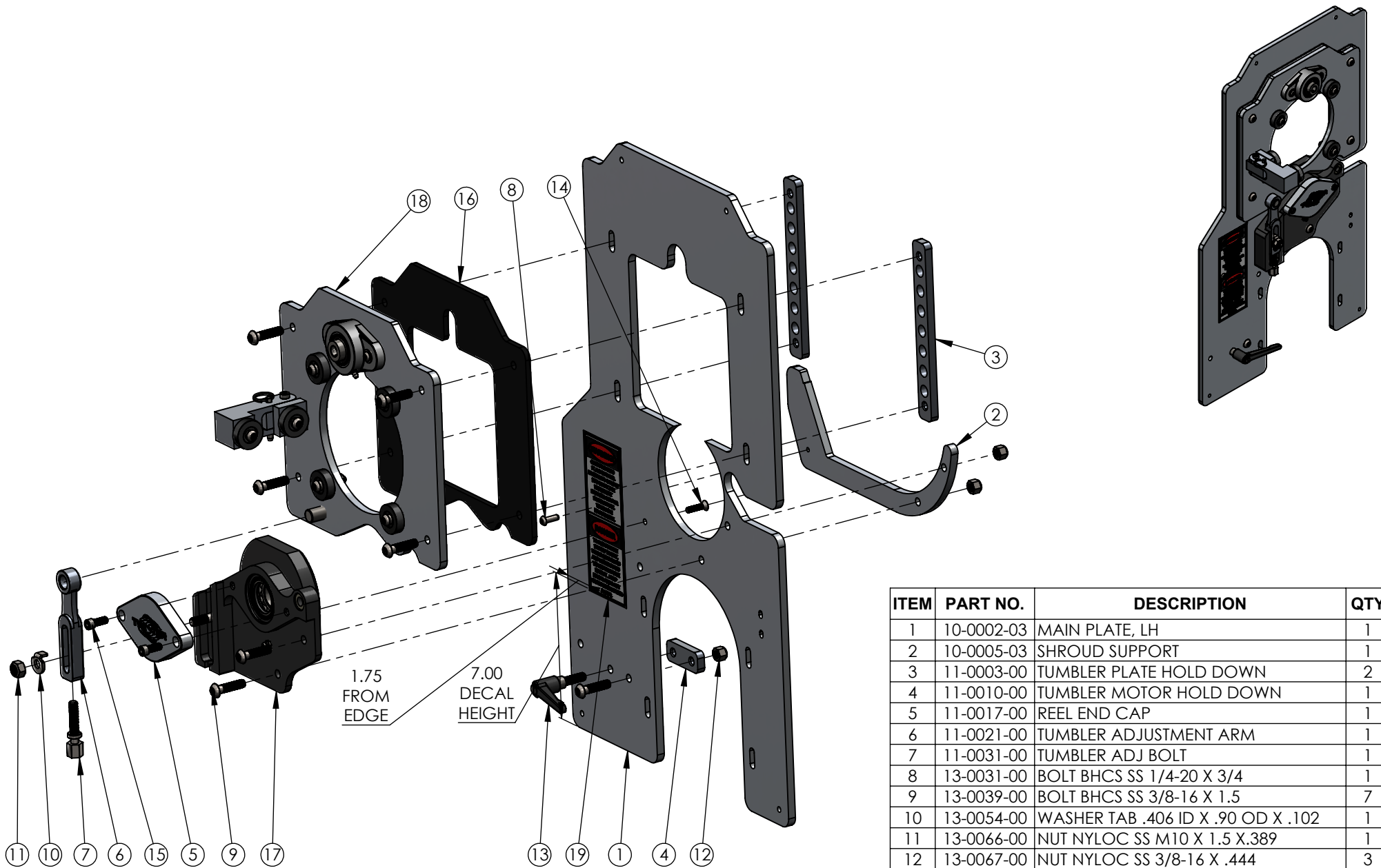


ITEM	PART NO.	DESCRIPTION	QTY
1	10-0001-03	MAIN PLATE, RH	1
2	10-0005-03	SHROUD SUPPORT	1
3	10-0006-00	MAIN MOTOR BRACKET	1
4	11-0003-00	TUMBLER PLATE HOLD DOWN	2
5	11-0004-01	MOTOR MOUNT HOLD DOWN	2
6	11-0009-01	BELT COVER BRACKET FORMED	1
7	11-0021-00	TUMBLER ADJUSTMENT ARM	1
8	11-0031-00	TUMBLER ADJ BOLT	1
9	13-0031-00	BOLT BHCS SS 1/4-20 X 3/4	1
10	13-0033-00	BOLT BHCS SS 1/4-20 X 3/8	1
11	13-0039-00	BOLT BHCS SS 3/8-16 X 1.5	9
12	13-0053-00	WASHER SPLIT SS .385 ID X 43/64 OD X .10	1
13	13-0054-00	WASHER TAB .406 ID X .90 OD X .102	1
14	13-0066-00	NUT NYLOC SS M10 X 1.5 X.389	1
15	13-0067-00	NUT NYLOC SS 3/8-16 X .444	2
16	13-0141-00	BOLT HHCS SS 3/8-16 X 1.75	1
17	13-0142-00	BOLT FHCS SS 1/4-20 X 1	1
18	17-0088-02	TUMBLER SUPPORT SHIM	1
19	17-0089-01	MAIN MOTOR BRACKET SHIM	1
20	21-0116-00	DECAL, ONLY PROCESS PLANT MATTER	1
21	24-0122-00	BEARING PLATE ASSY, RH	1
22	24-0142-00	RH TUMBLER PLATE ASSY	1



TITLE:
SIDE PLATE ASSY RH T2

DWG. NO.
24-0120-00

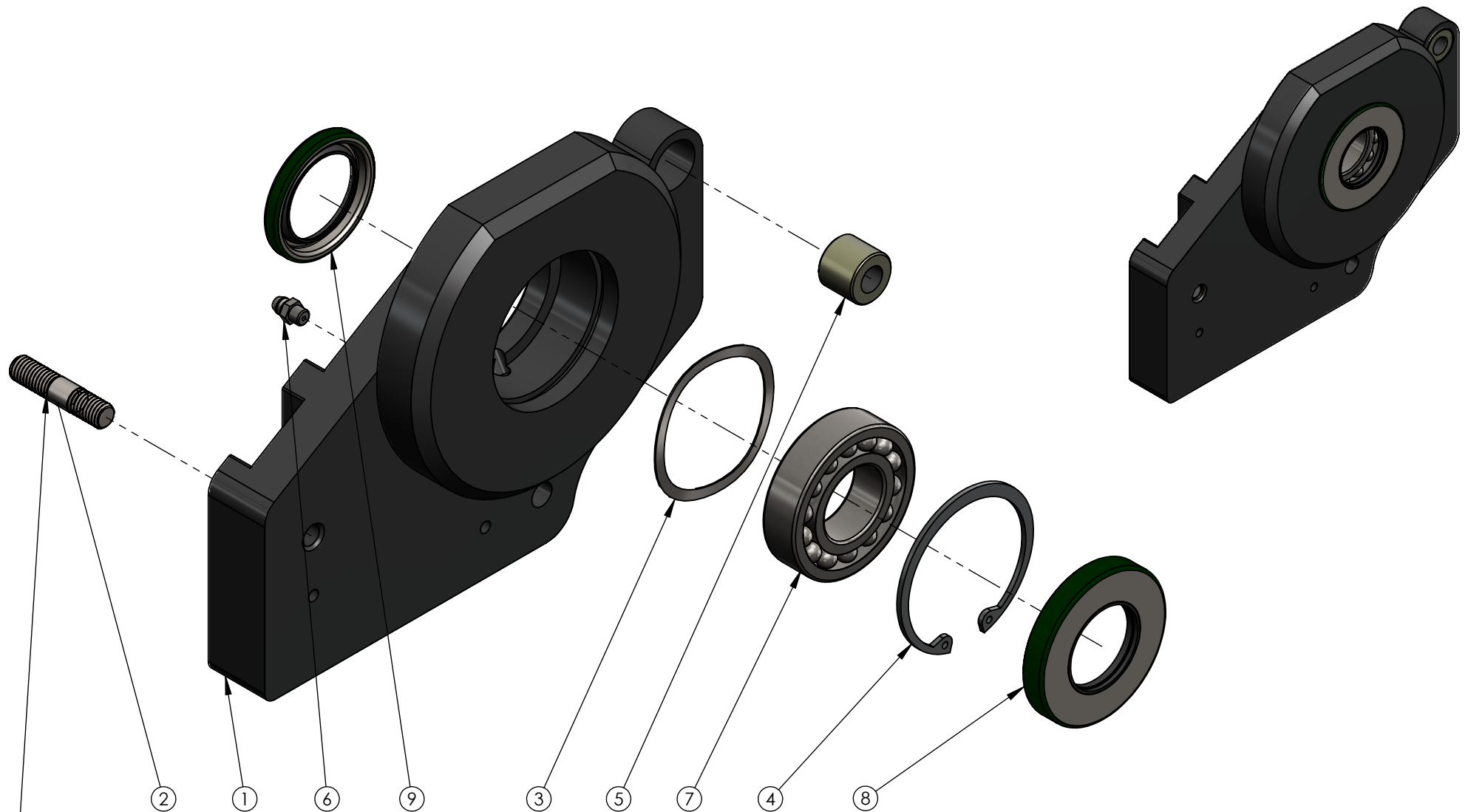


ITEM	PART NO.	DESCRIPTION	QTY
1	10-0002-03	MAIN PLATE, LH	1
2	10-0005-03	SHROUD SUPPORT	1
3	11-0003-00	TUMBLER PLATE HOLD DOWN	2
4	11-0010-00	TUMBLER MOTOR HOLD DOWN	1
5	11-0017-00	REEL END CAP	1
6	11-0021-00	TUMBLER ADJUSTMENT ARM	1
7	11-0031-00	TUMBLER ADJ BOLT	1
8	13-0031-00	BOLT BHCS SS 1/4-20 X 3/4	1
9	13-0039-00	BOLT BHCS SS 3/8-16 X 1.5	7
10	13-0054-00	WASHER TAB .406 ID X .90 OD X .102	1
11	13-0066-00	NUT NYLOC SS M10 X 1.5 X.389	1
12	13-0067-00	NUT NYLOC SS 3/8-16 X .444	3
13	13-0075-00	ADJUSTMENT LEVER 3/8-16	1
14	13-0142-00	BOLT FHCS SS 1/4-20 X 1	1
15	13-0143-00	BOLT SHCS SS 5/16-18 X 3/4	2
16	17-0088-02	TUMBLER SUPPORT SHIM	1
17	24-0123-00	BEARING PLATE ASSY, LH T2	1
18	24-0141-00	LH TUMBLER PLATE ASSY T2	1
19	21-0116-00	DECAL, ONLY PROCESS PLANT MATTER	1



TITLE:
SIDE PLATE ASSY LH T2

DWG. NO.
24-0121-00



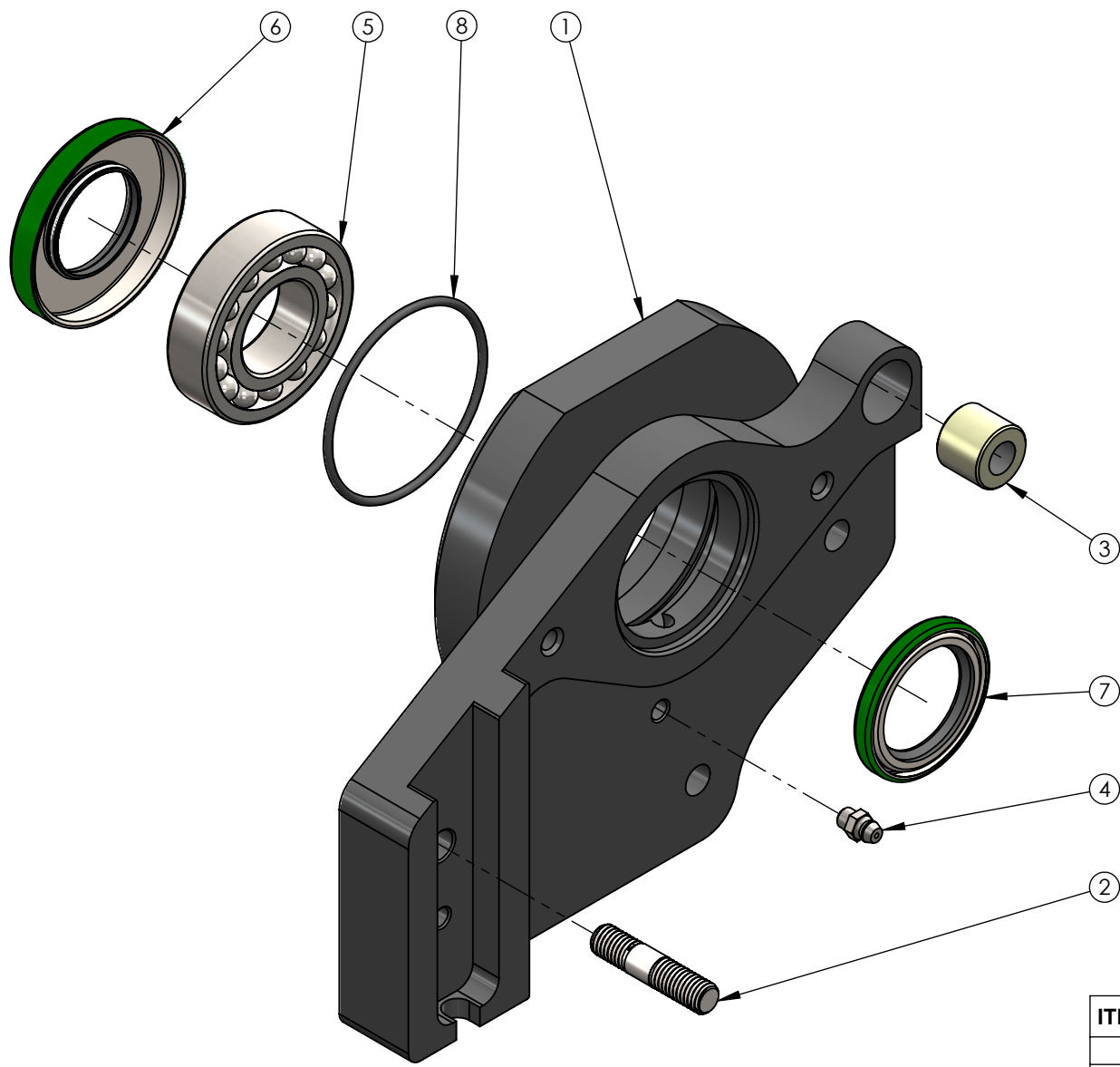
NOTE: SCREW END WITH SHORTER THREADS INTO PLATE

ITEM	PART NO.	DESCRIPTION	QTY
1	11-0015-01	BEARING PLATE, RH	1
2	11-0029-00	BEARING PLATE STUD	1
3	13-0056-00	WASHER WAVE STL 2.1 OD X 2.44 ID X .16	1
4	13-0058-00	RETAINING RING INTERNAL 2.644 OD X .08	1
5	13-0069-00	BUSHING SS .425 ID X 13/16 OD X .679	1
6	13-0073-00	ZERK GREASE NIPPLE SS 1/4-28 X .539	1
7	19-0104-00	REEL BEARING 1.18 ID X 2.44 OD X .63	1
8	19-0105-00	BEARING SEAL 2.51 OD X 1.3 ID X .38	1
9	19-0106-00	BEARING SEAL 2.01 OD X 1.3 ID X .25	1



TITLE:
BEARING PLATE ASSY, RH

DWG. NO.
24-0122-00

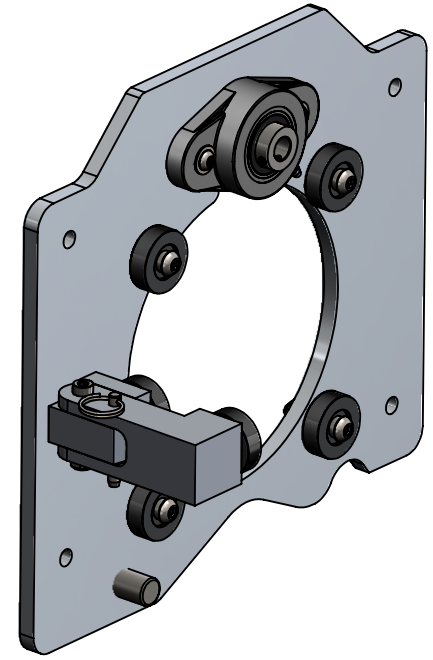
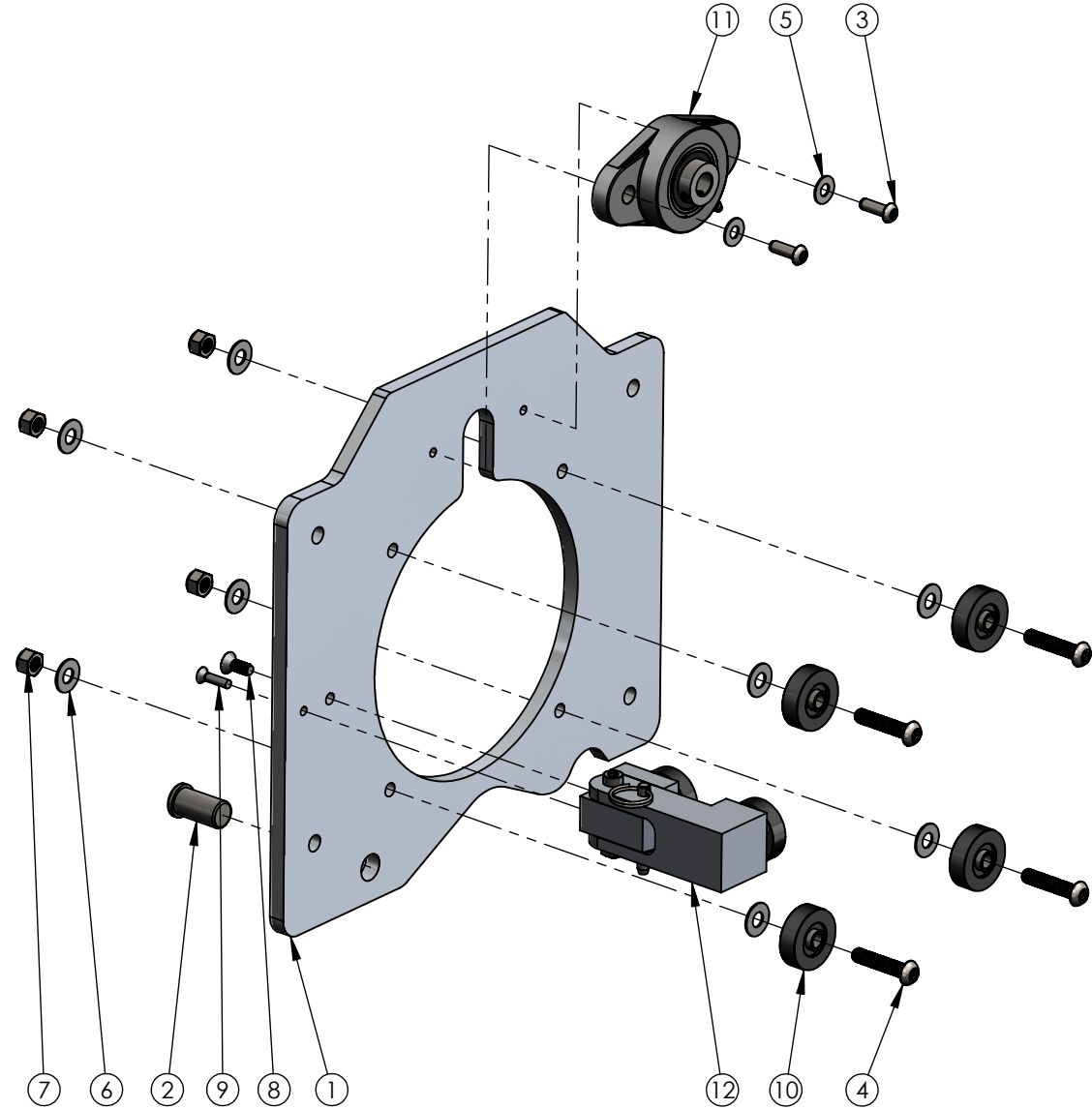


ITEM	PART NO.	DESCRIPTION	QTY
1	11-0016-01	BEARING PLATE, LH	1
2	11-0029-00	BEARING PLATE STUD	1
3	13-0069-00	BUSHING SS .425 ID X 13/16 OD X .679	1
4	13-0073-00	ZERK GREASE NIPPLE SS 1/4-28 X .539	1
5	19-0104-00	REEL BEARING 1.18 ID X 2.44 OD X .63	1
6	19-0105-00	BEARING SEAL 2.51 OD X 1.3 ID X .38	1
7	19-0106-00	BEARING SEAL 2.01 OD X 1.3 ID X .25	1
8	19-0107-00	BEARING PLATE O-RING	1



TITLE:
BEARING PLATE ASSY, LH T2

DWG. NO.
24-0123-00

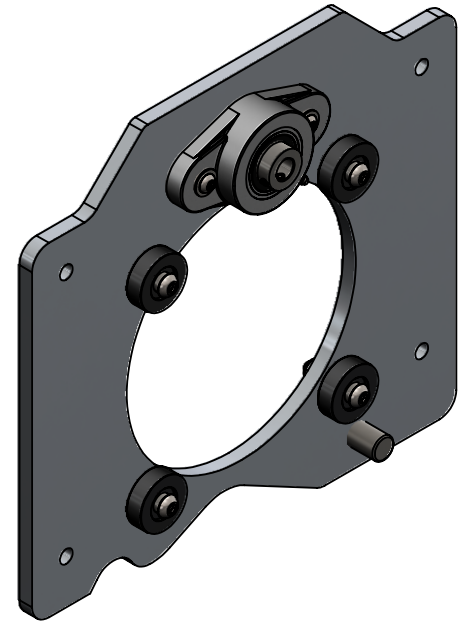
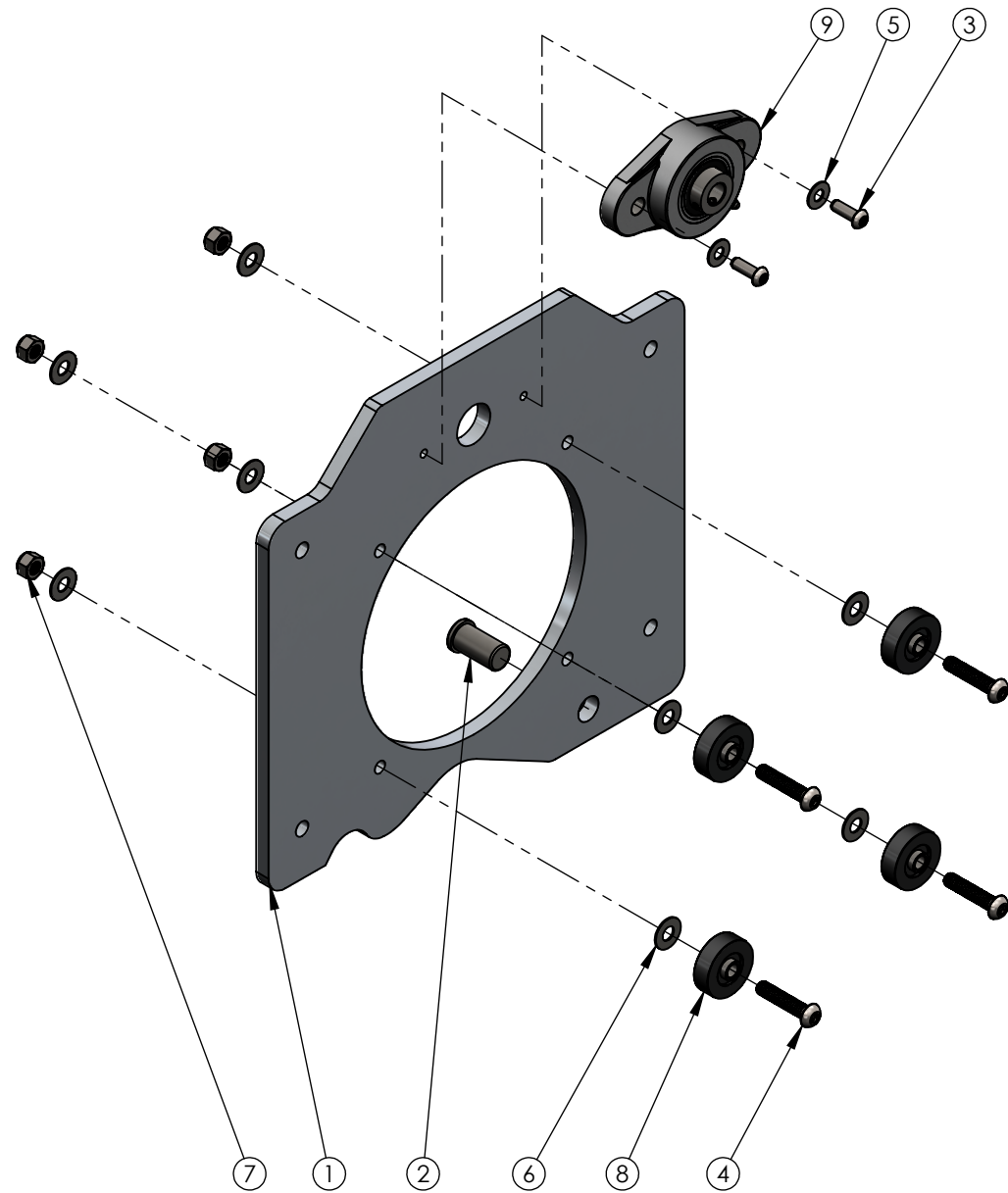


ITEM	PART NO.	DESCRIPTION	QTY
1	10-0140-04	TUMBLER SUPPORT LH	1
2	11-0108-00	TUMBLER PLATE PIN	1
3	13-0031-00	BOLT BHCS SS 1/4-20 X 3/4	2
4	13-0035-00	BOLT BHCS SS 5/16-18 X 1.5	4
5	13-0046-00	WASHER FLAT SS 1/4 ID X 5/8 OD X .04	2
6	13-0051-00	WASHER FLAT SS 11/32 ID X 3/4 OD X .04	8
7	13-0064-00	NUT NYLOC SS 5/16-18 X .353	4
8	13-0144-00	BOLT FHCS SS 1/4-20 X 5/8	1
9	13-0145-00	BOLT FHCS SS #10-24 X .75	1
10	14-0132-00	URETHANE ROLLER, BLACK	4
11	19-0102-00	FLANGE MOUNTED BEARING	1
12	24-0124-00	TUMBLER GUIDE ASSY T2	1



TITLE:
LH TUMBLER PLATE ASSY T2

DWG. NO.
24-0141-00

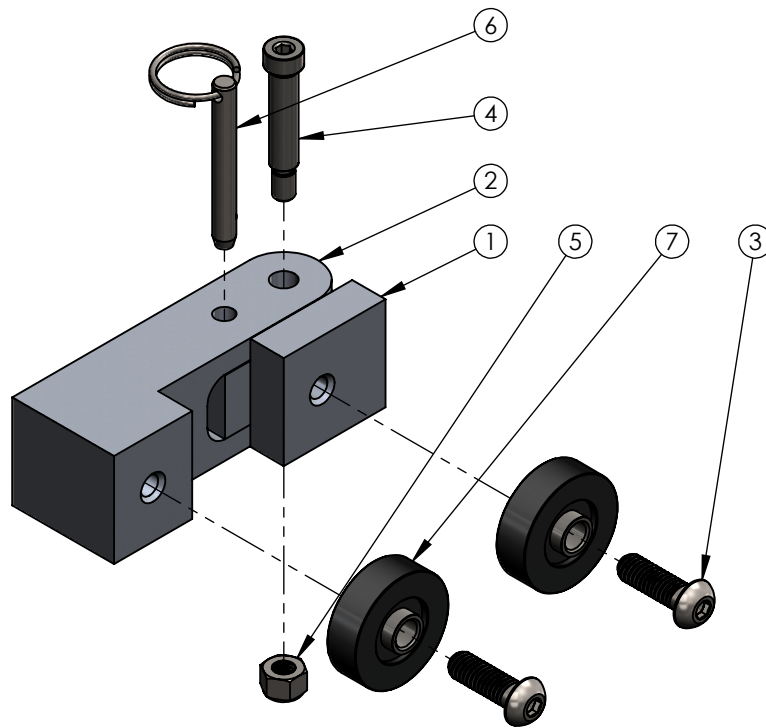
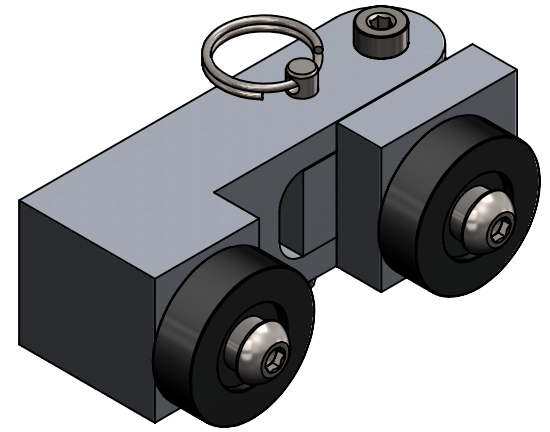


ITEM	PART NO.	DESCRIPTION	QTY
1	10-0139-04	TUMBLER SUPPORT RH	1
2	11-0108-00	TUMBLER PLATE PIN	1
3	13-0031-00	BOLT BHCS SS 1/4-20 X 3/4	2
4	13-0035-00	BOLT BHCS SS 5/16-18 X 1.5	4
5	13-0046-00	WASHER FLAT SS 1/4 ID X 5/8 OD X .04	2
6	13-0051-00	WASHER FLAT SS 11/32 ID X 3/4 OD X .04	8
7	13-0064-00	NUT NYLOC SS 5/16-18 X .353	4
8	14-0132-00	URETHANE ROLLER, BLACK	4
9	19-0102-00	FLANGE MOUNTED BEARING	1



TITLE:
RH TUMBLER PLATE ASSY

DWG. NO.
24-0142-00

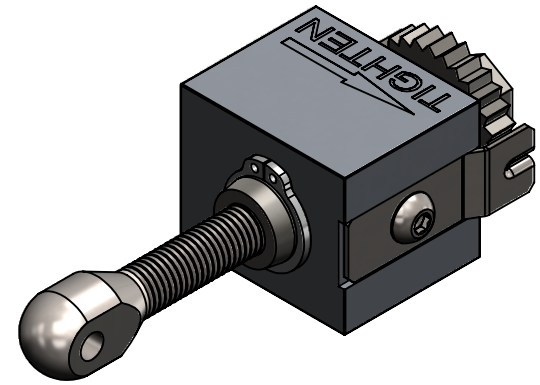
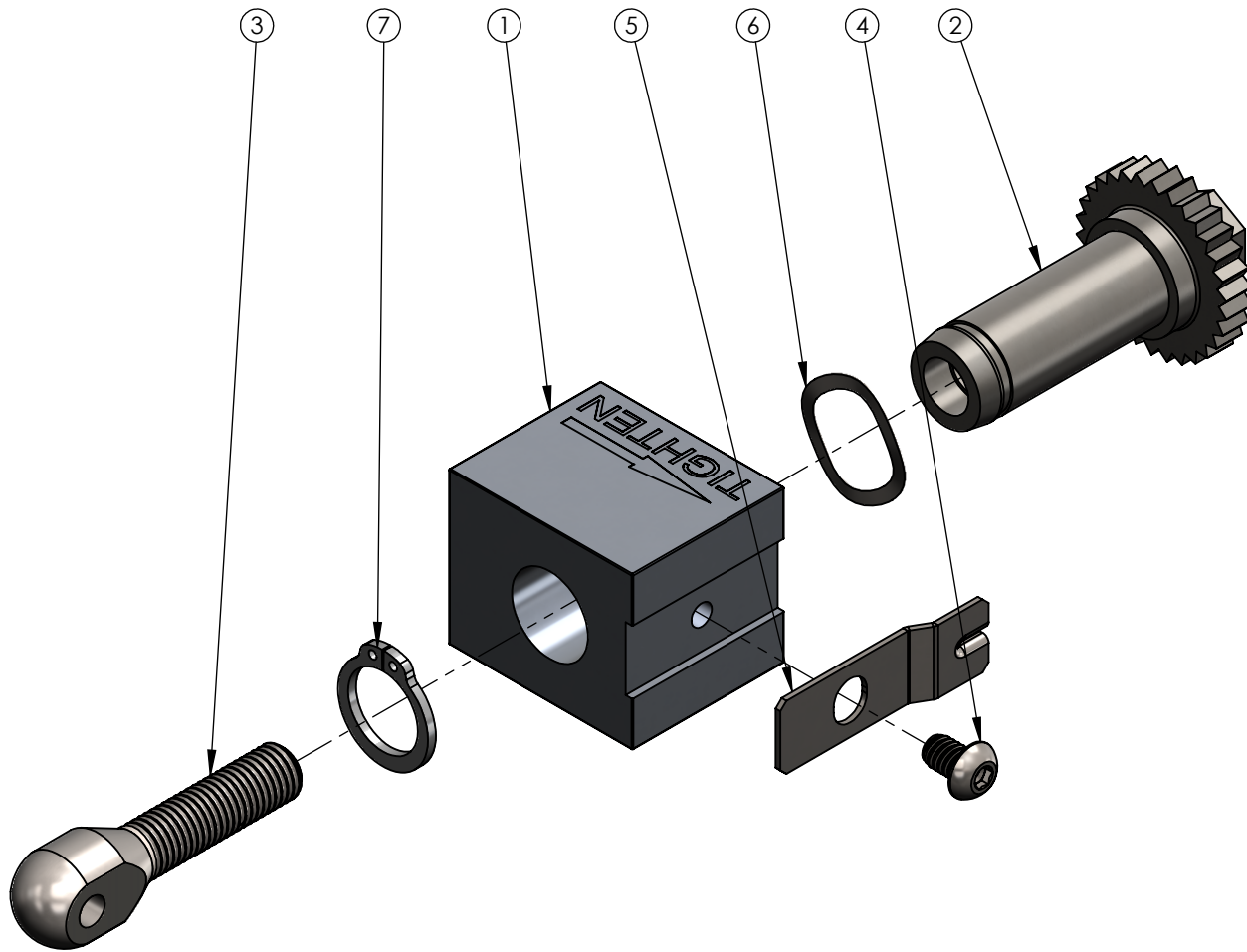


ITEM	PART NO.	DESCRIPTION	QTY
1	11-0018-00	TUMBLER GUIDE BLOCK	1
2	11-0019-00	TUMBLER GUIDE ARM	1
3	13-0036-00	BOLT BHCS SS 5/16-18 X 1	2
4	13-0041-00	BOLT SHCS SS 1/4-20 X 7/16; 5/16 X 1.25" SHOULDER	1
5	13-0062-00	NUT NYLOC 1/4-20 X .322	1
6	13-0133-00	PULL PIN SS 1/4 X 2.06	1
7	14-0132-00	URETHANE ROLLER, BLACK	2



TITLE:
TUMBLER GUIDE ASSY T2

DWG. NO.
24-0124-00

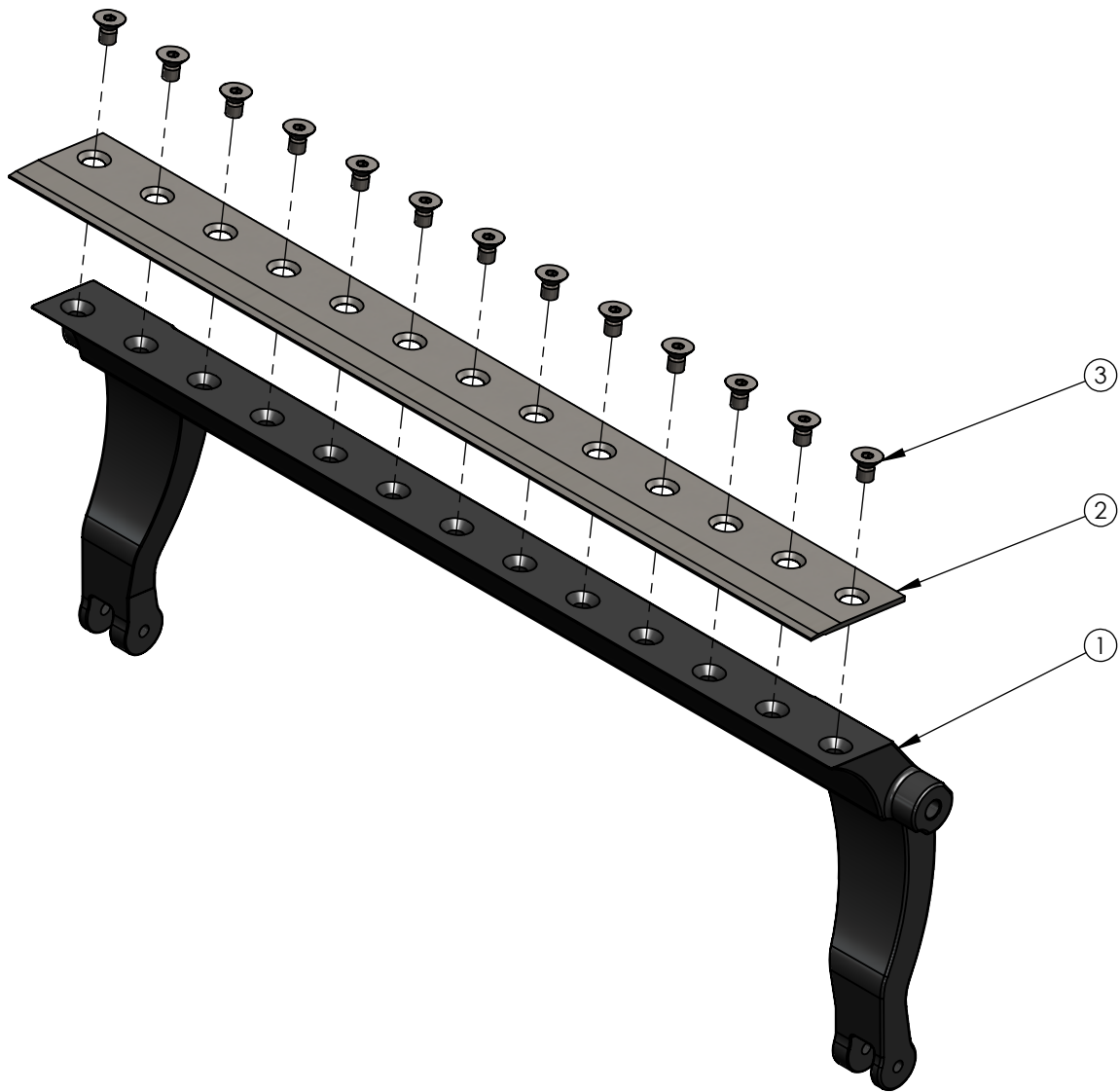


ITEM	PART NO.	DESCRIPTION	QTY
1	11-0020-00	BEDBAR ADJUSTMENT BLOCK	1
2	11-0027-00	BEDBAR ADJUSTMENT BOLT	1
3	11-0028-00	BEDBAR ADJ ROD END	1
4	13-0033-00	BOLT BHCS SS 1/4-20 X 3/8	1
5	13-0057-00	DETENT CLIP	1
6	13-0060-00	WASHER WAVE STL .783 ID X 1.0 OD X .021	1
7	13-0061-00	RETAINER RING EXT STL .685 ID X .881 OD X .076	1



TITLE:
TIGHTENING BLOCK ASSY T2

DWG. NO.
24-0125-01



ITEM	PART NO.	DESCRIPTION	QTY
1	11-0026-00	BEDBAR T2 - MACHINED AND PAINTED	1
2	11-0140-03	BEDKNIFE	1
3	13-0040-00	BOLT FHCS SS 5/16-18 X 1/2	13



TITLE:
BEDBAR ASSY T2

DWG. NO.
24-0126-00

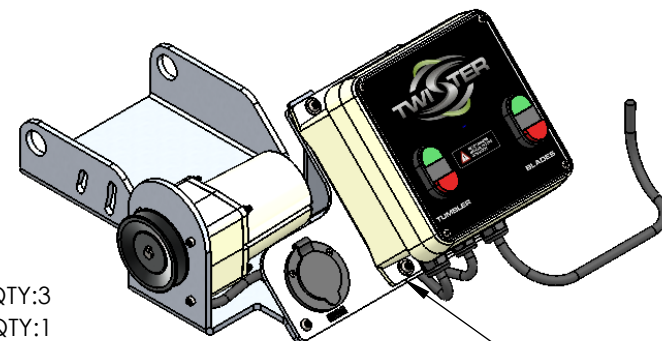
ITEM	PART NO.	DESCRIPTION	QTY
1	10-0008-00	CONTROL BOX SUPPORT	1
2	10-0009-00	CONTROL BOX PLATE	1
3	11-0007-00	TUMBLER MOTOR BRACKET FORMED	1
4	13-0031-00	BOLT BHCS SS 1/4-20 X 3/4	4
5	13-0032-00	BOLT BHCS SS 1/4-20 X 1	2
6	13-0042-00	BOLT SHCS SS M5-8 X 80MM	4
7	13-0046-00	WASHER FLAT SS 1/4 ID X 5/8 OD X .04	9
8	13-0047-00	WASHER FLAT SS 5.5 ID X 11.7 OD X .8MM	4
9	13-0062-00	NUT NYLOC 1/4-20 X .322	6
10	13-0063-00	NUT HEX SS M5-8 X 4MM	4
11	13-0076-00	WIRE CLAMP EPMD 3/4 - 1/4 BOLT HOLE	1
12	13-0078-00	KEYSTOCK SS 4 X 4 X 25MM	1
13	13-0135-00	RIVET BUTTON SS B4 8S 1/8 X 1/2"	3
14	14-0079-01	AK30 10MM TUMBLER MOTOR PULLEY	1
15	15-0127-00	WIRE - CONTROL BOX TO BLADE MOTOR 31"	1
16	16-0086-00	.025HP TUMBLER MOTOR T2	1
17	21-0118-00	DECAL, 120 VOLTS T2	1
18	24-0005-00	15 AMP RECEPTACLE ASSY T2	1
19	24-0129-00	CONTROL BOX ASSY	1

***NOTE:

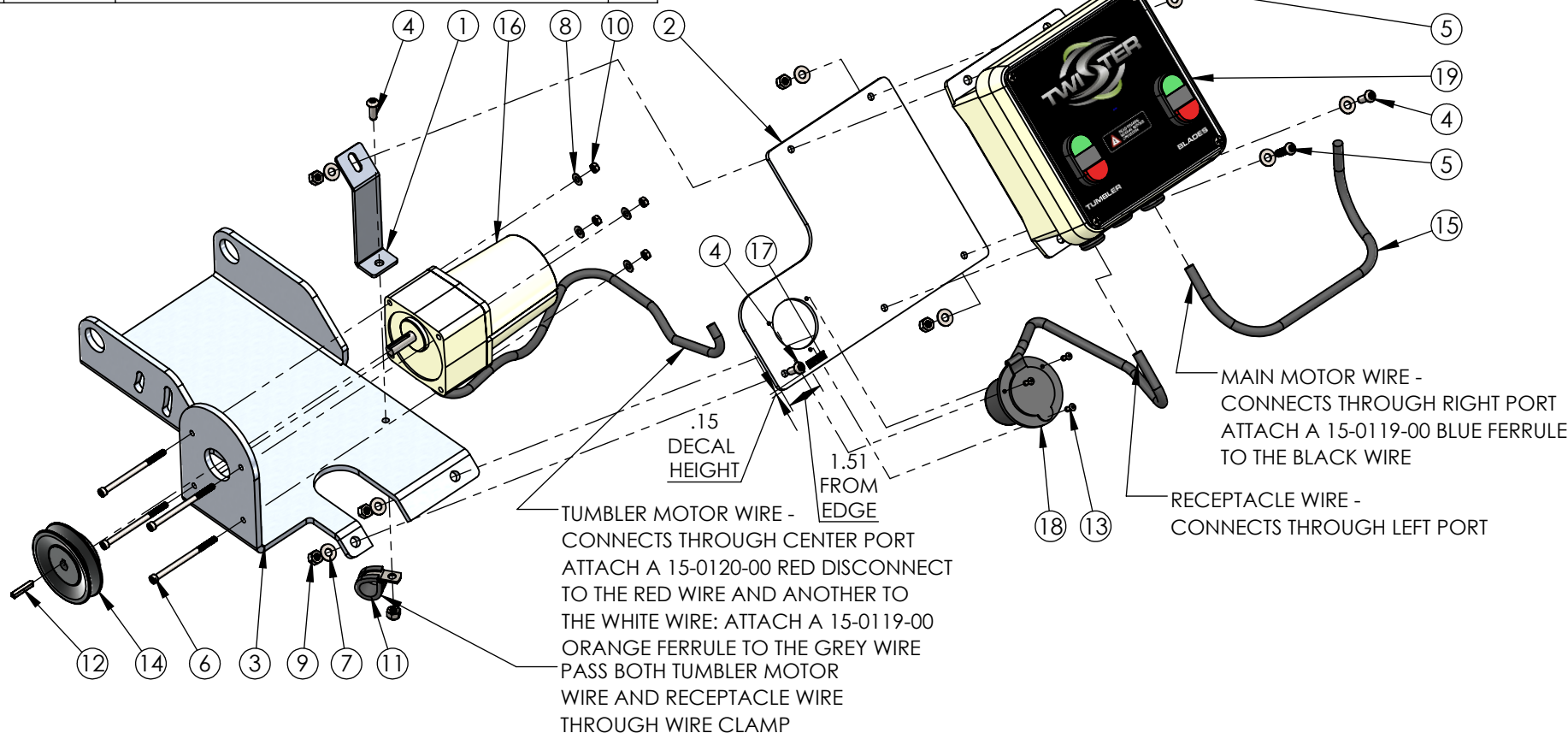
ITEMS 6 (BOLT), 8 (WASHER), 10 (NUT), AND 12 (KEY) ARE ALL INCLUDED WITH ITEM 16 (TUMBLER MOTOR)

NOT SHOWN:

- 15-0084-00 WIRE JOINTS - LARGE QTY:3
- 15-0112-00 CABLE TIE 4" BLACK QTY:1
- 15-0119-00 WIRE FERRULE 14AWG BLUE QTY:1
- 15-0120-00 DISCONNECT 14AWG RED - RIGHT ANGLE CRIMP QTY:2
- 15-0121-00 DISCONNECT 18AWG BLUE - RIGHT ANGLE CRIMP QTY:1
- 15-0123-00 WIRE FERRULE 20AWG ORANGE QTY:1

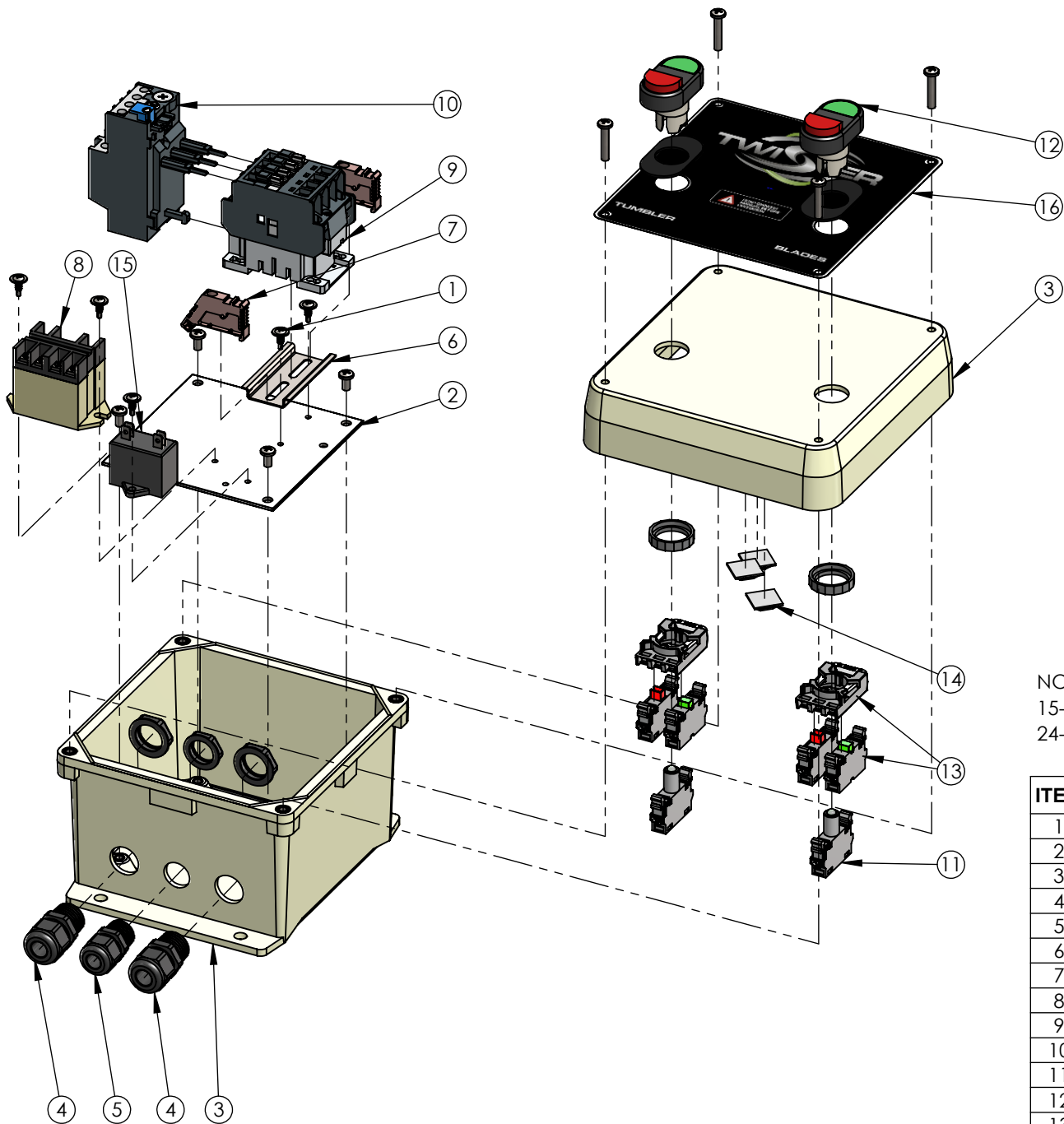


ATTACH RECEPTACLE WIRE AND TUMBLER MOTOR WIRE TOGETHER HERE WITH CABLE TIE (NOT SHOWN)



TITLE:
CONTROL BOX - MOTOR - BRACKET ASSY

DWG. NO.
24-0150-00



NOT SHOWN:

15-0112-00 CABLE TIES 4" BLACK - QTY: 16

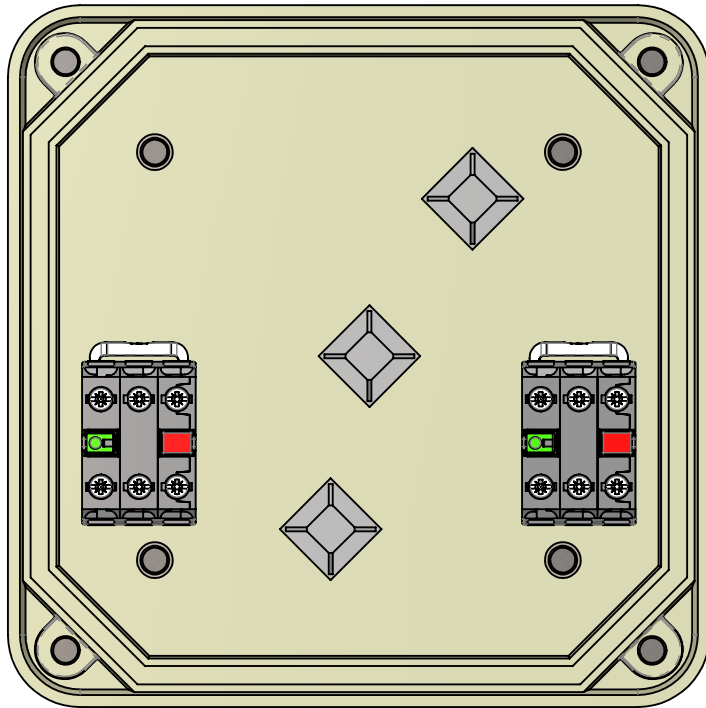
24-0151-00 CONTROL BOX WIRING KIT - QTY: 1

ITEM	PART NO.	DESCRIPTION	QTY
1	13-0147-00	BOLT SELF TAP ZP #8-18 X 1/2"	5
2	15-0007-00	CONTROL BOX BACK PAN NA	1
3	15-0082-00	CONTROL BOX ENCLOSURE 6 X 6 X 4.1	1
4	15-0086-00	LIQUID TIGHT CORDGRIP - LARGE 3216	2
5	15-0087-00	LIQUID TIGHT CORDGRIP - SMALL 3213	1
6	15-0092-00	DIN RAIL	1
7	15-0093-00	DIN RAIL END STOP	2
8	15-0094-00	POWER RELAY 100/120	1
9	15-0095-00	CONTACTOR, 3-POLE, 21A, 7.5HP, 600V	1
10	15-0096-00	THERMAL OVERLOAD RELAY	1
11	15-0097-00	MODULAR LED BLOCK	2
12	15-0098-00	DOUBLE PUSHBUTTON	2
13	15-0099-00	CONTACT BLOCK ASSY	2
14	15-0115-00	ADHESIVE CABLE TIE MOUNT	3
15	15-0122-00	MOTOR CAPACITOR FOR .025HP	1
16	21-0119-02	DECAL, ELECTRICAL BOX COVER T2	1

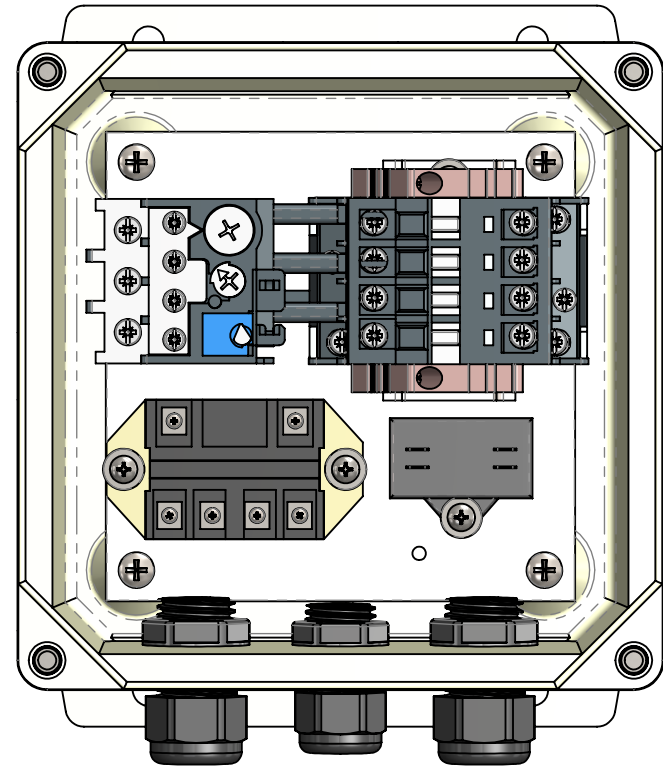


TITLE:
CONTROL BOX ASSY

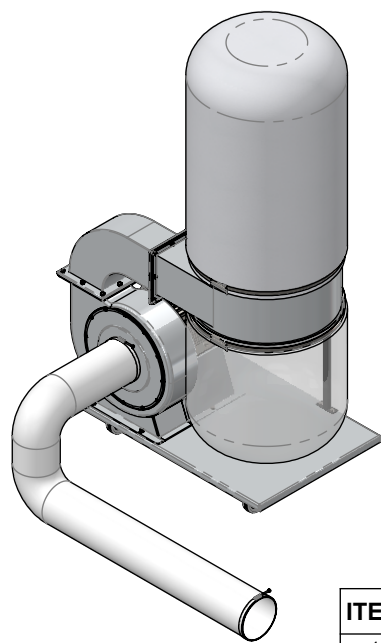
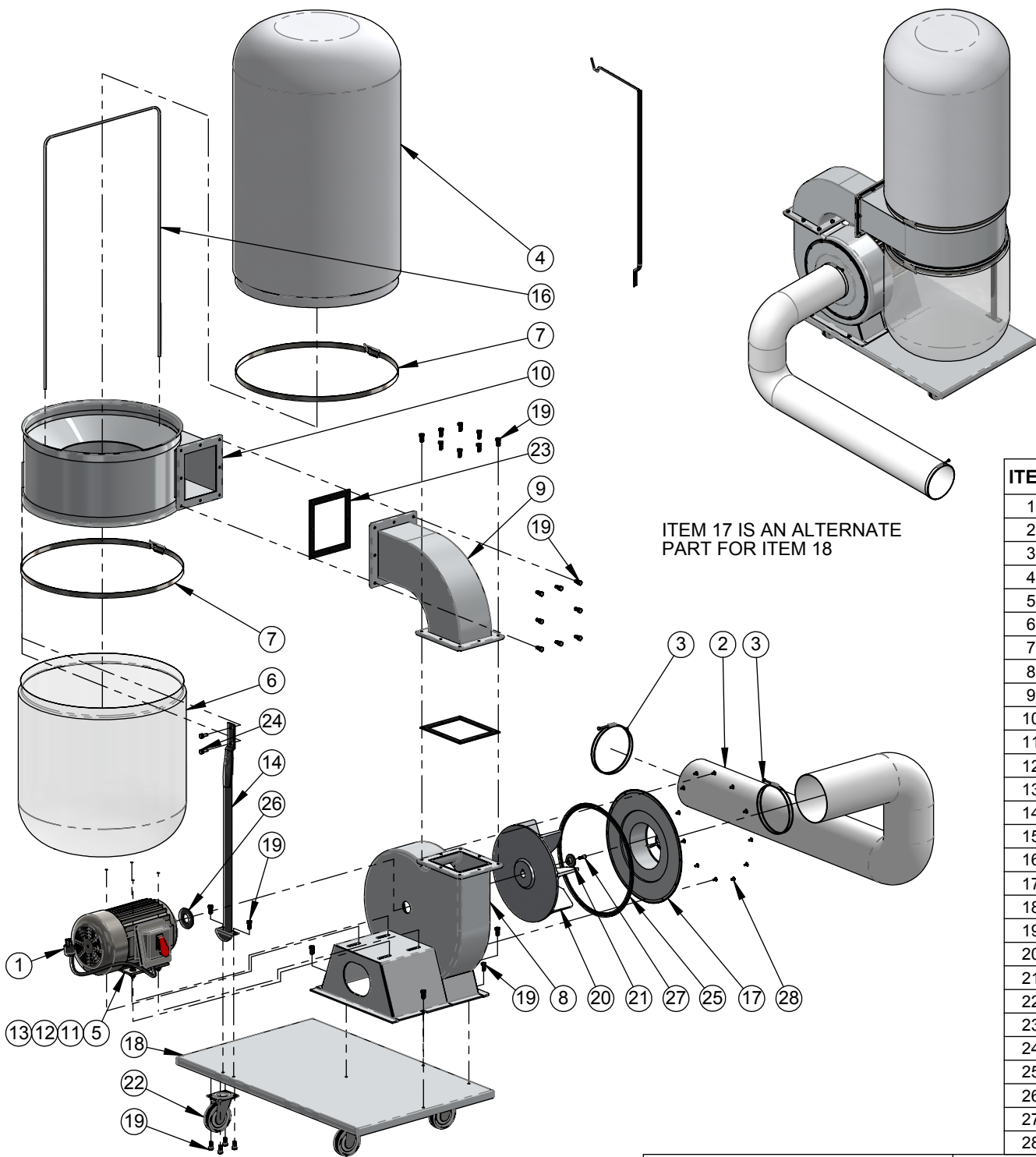
DWG. NO.
24-0129-00



UNDERSIDE OF LID SUBASSEMBLY
WIRING NOT SHOWN



INSIDE OF ENCLOSURE
WIRING NOT SHOWN



ITEM	PART NO.	DESCRIPTION	QTY
1	23-0004-00	VACUUM MOTOR CORD T2	1
2	23-0120-00	VACUUM HOSE, 6in DIA PVC X 6.25ft	1
3	23-0121-00	VACUUM HOSE CLAMP 6in T2	2
4	23-0122-01	VACUUM BAG 80 MICRON T2 LOGO	1
5	23-0123-00	VACUUM MOTOR 2HP T2	1
6	23-0125-00	VACUUM BAG, CLEAR T2	1
7	23-0126-00	VACUUM BAG CLAMP T2	2
8	23-0129-00	VACUUM IMPELLER HOUSING T2	1
9	23-0130-00	VACUUM ELBOW T2	1
10	23-0131-00	VACUUM CYCLONE CHAMBER T2	1
11	23-0134-00	SAFETY LOCKOUT SWITCH RED AND YELLOW	1
12	23-0136-00	VACUUM START CAPACITOR 125V 400MF T2	1
13	23-0137-00	VACUUM RUN CAPACITOR 250V 35MF	1
14	23-0138-00	VACUUM BODY SUPPORT T2	1
15	23-0139-00	VACUUM BAG OUTER SUPPORT ROD T2	1
16	23-0140-00	VACUUM BAG SUPPORT ROD T2	1
17	23-0141-00	VACUUM INLET 6IN T2	1
18	23-0142-00	VACUUM BASE PLATE T2	1
19	23-0143-00	BOLT HHCS ZP 5/16-24 X 1/2	38
20	23-0144-00	VACUUM IMPELLER T2	1
21	23-0145-00	VACUUM IMPELLER WASHER T2	1
22	23-0146-00	VACUUM CASTER T2	4
23	23-0147-00	VACUUM GASKET T2	2
24	23-0148-00	BOLT HHCS ZP 5/16-18 X 3/4	2
25	23-0149-00	VACUUM IMPELLER HOUSING GASKET T2	1
26	23-0150-00	VACUUM MOTOR GASKET T2	1
27	23-0153-00	BOLT SHCS ZP M6-1 X 20 REVERSE THREAD	1
28	23-0154-00	BOLT PHCS ZP #10-24 X 3/8	12

TITLE:
VACUUM 2HP 1700 CFM

DWG. NO.
23-0117-00