

peerless-AV[®]

Digital Signage Collection



peerless-AV[®]



Official Digital Display Partner of MiLB



Exceeding your expectations with innovative solutions.

Peerless-AV® continues to be a pioneer and market leader in the digital signage arena. We consistently raise the bar, providing innovative, award-winning solutions for interactive displays, out-of-home advertising, in-store displays, POS solutions, and much more. We have creative, compelling solutions for just about any environment.

Our standard products encompass a wide range of digital signage solutions, from full-service video wall mounts to integrated kiosks. As the industry leader in custom solutions, we offer true innovation and technical expertise, all housed within our state-of-the-art facility, to take projects from concept to successful completion. Our dedicated team ensures we're staying ahead of industry trends, providing you with innovative products backed by the Peerless-AV quality you trust.

COMPLETE LINE OF DIGITAL SIGNAGE SOLUTIONS



Outdoor Displays & Accessories
pg# 4-5



Outdoor Kiosks
pg# 6-7



Indoor Kiosks
pg# 8-9



LED Video Wall Mounting Systems
pg# 10-11



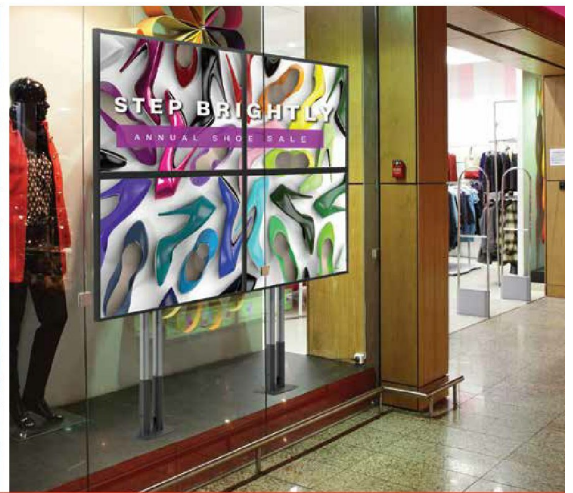
Full Service Video Wall Mounts
pg# 12-13



Flat Wall & Ceiling Video Wall Mounts
pg# 14



Video Wall Carts & Stands
pg# 15



Digital Menu Board Mounts
pg# 16



Multi-Display Ceiling Systems
pg# 17



Media Storage & Back-to-Back Mounts
pg#18



Cable & Truss Mounts
pg#18



Gondola & Shelf Mounts
pg# 19



Modular Solutions
pg# 20-21



Carts & Stands
pg# 22



Wireless
pg# 23

Xtreme™ High Bright Outdoor Displays

The unique, fully-sealed design of the Peerless-AV® Xtreme™ High Bright Outdoor Display is perfect for any professional, digital signage application. These daylight readable displays are an all-in-one solution for commercial installations including stadiums, theme parks, quick serve restaurants, mass transit and more.

Visit peerless-av.com/XtremeHB to learn more.



All Weather Rated: IP68



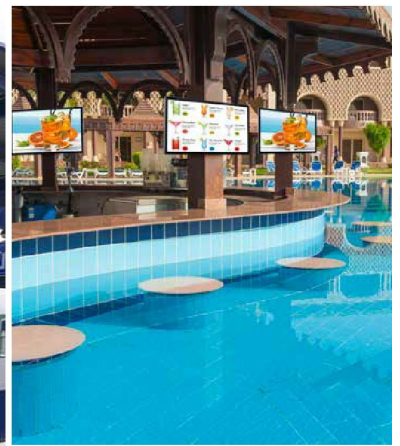
Xtreme™ High Bright Outdoor Displays

COMING SOON

XHB432	XHB492	XHB552	XHB652
Display Size 43" Diagonal	Display Size 49" Diagonal	Display Size 55" Diagonal	Display Size 65" Diagonal
Resolution 1920 x 1080	Brightness 2,500cd/m ²	Contrast Ratio 1300:1	Viewing Angle 178° Vertical/Horizontal
Response Time XHB492, XHB652: 8ms (Gray to Gray) XHB432, XHB552: 12ms (Gray to Gray)	Operating Temperature -31°F to 140°F (-35°C - 60°C)	Inputs Coax, VGA, HDMI, DisplayPort, Component, Composite, USB, RS232 (serial control), LAN, IR Extender, ALS Extender	VESA® Pattern 400x200, 400x400, 600 x 400mm

- Daylight readable display, offering 2500nits of light output and FHD 1080p resolution for a bright, crisp picture
- Highest environmental rating (IP68) prevents the ingress of foreign materials, such as water, dust, moisture and insects, from entering the display
- Patented Dynamic Thermal Transfer™ system keeps internal components safely warmed in extreme cold and properly cooled in extreme heat
- Remote and Local monitoring, supported via IP addressable user interface, for temperature, humidity, and power draw diagnostics of the display

4



OUTDOOR ACCESSORIES



RoHS

Outdoor Media Player Enclosure

Environmentally Controlled

CL-ENCL68

Power
AC Input 100-240VAC, 50-60Hz

Support
Supports media players up to 14.2" x 10.6" x 3.5"

Operating Temperature
-40°F to 115°F



FC CE IP RoHS

Xtreme™ Outdoor IR Touch Overlays

For 43"/49"/55" Xtreme™ High Bright Outdoor Displays

IRTO43/49/55-200

Environmental Rating
IP65

Touch Point
10 Point Maximum

Support
HID Compliant



Wind Rated Tilt Wall Mount for Outdoor Displays

Wind rated up to 110mph when fixed tilt mechanism is engaged

EWMU

Display Size
32" to 65"

Max Load
200lb (91kg)

Mounting Pattern
721 x 449mm (28.39"W x 17.67"H)



RoHS

Wind Rated Tilt Ceiling Mount for Outdoor Displays

Wind rated up to 90mph

ECMU models

Display Size
32" to 65"

Max Load
200lb (91kg)

Mounting Pattern
721 x 449mm (28.39"W x 17.67"H)



Wind Rated Tilt Pedestal Mount for Outdoor Displays

Wind rated up to 110mph when fixed tilt mechanism is engaged

EPMU models

Display Size
32" to 65"

Max Load
200lb (91kg)

Mounting Pattern
721 x 449mm (28.39"W x 17.67"H)

- Sealed cable entry protects inputs against outside debris and weather

- Easily transform the Xtreme™ display into an interactive touch screen by adding the Xtreme™ Outdoor IR Touch Overlay accessory

- Designed specifically for outdoor use and constructed from weatherproof materials

- Easy tilt settings allow for the perfect viewing angle

Outdoor Kiosks

Replace static signage with Peerless-AV® outdoor kiosks for greater public engagement and seamless updates of digital content whenever, wherever. With a focus on functionality and aesthetics, these outdoor kiosks are designed to be modern, approachable, practical, and endure the rigors of everyday use. Peerless-AV's all-weather rated kiosks are ideal for sharing community information, travel, and weather details, as well as wayfinding, advertising, entertainment, and more.



All Weather Rated Display: IP68



Display's Operating Temperature Range: -31°F - 140°F (-35°C to 60°C)

Smart City Kiosks

Includes 49" or 55" Xtreme™ High Bright Outdoor Display

KOP2549(-S)-XHB	KOP2555(-S)-XHB
Display Size 49" Diagonal	Display Size 55" Diagonal

Wind tested up to 140 mph

Kiosk: **RoHS** Display: **IP**



- Ultra slim design is sleek and stylish, yet rugged enough to be installed in any application
- Installation is easy without the need for cranes or forklifts
- Locking rear door offers quick access to the display for maintenance
- Easily add-on additional technology components for enhanced functionality, such as IR touch overlays, cameras, routers, antennas and more



Outdoor Digital Signage Boards

Supports 49" or 55" Xtreme™ High Bright Outdoor Display*

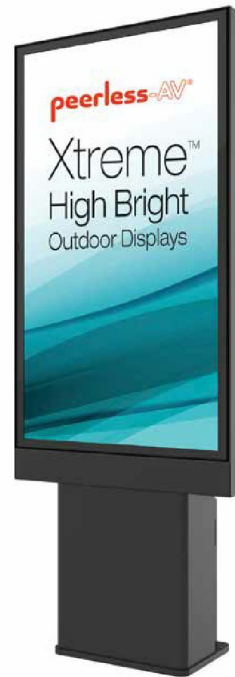
*Displays Must Be Ordered Separately

KOF549-1XHB	KOF555-1XHB
Display Size 49" Diagonal	Display Size 55" Diagonal



Wind rated up to 150 mph, with footing requirements for 90 - 120 mph winds

Kiosk: **RoHS** Display: **IP**



- Outdoor Digital Signage Boards are also available with two or three displays (KOF5-2XHB & KOF5-3XHB Models)
- Elegant, minimalistic design covers, protects and ventilates displays
- Pedestal base allows for mounting to existing footings, thus eliminating the need for pouring new concrete*
- Kiosk covers are available to protect and provide a clean installation

* As long as it meets the requirements for various wind load specifications

Indoor Kiosks

Choose from a versatile array of sleek, slim and attractive standard kiosk enclosures or create a completely unique kiosk solution fit for any indoor application and market – corporate, education, quick serve restaurants, hospitality, stadiums, retail and more. Our kiosks are customizable in every way – from the choice of technology to custom paint and vinyl wraps. If you can envision it, we can make it happen.



Build your integrated kiosk at kiosks.peerless-av.com



KIPICT2555

All-in-One Kiosk Powered by BrightSign®

Comes fully integrated with 55" display, 10-point IR touch overlay, & a BrightSign® XT1144 Expanded I/O Player



KIPC25 models

Floor Standing Portrait Kiosks

For 40"-65" displays



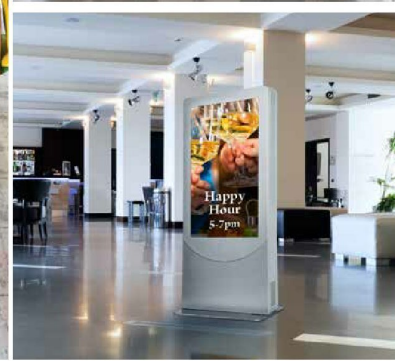
KILH5 models

Floor Standing Landscape Kiosks

For 40"-55" displays

Don't see a design or size you're looking for?





KIP586 & KIP588 models

Ultra Stretch Portrait Kiosks

For the LG 86BH5C & 86BH5C



KIL7/KIP7 & KIL6/KIP6 models

In-Wall & Wall Kiosks, Portrait & Landscape

For 40"-55" displays



Custom Solutions



Contact our **dedicated Kiosk Design Team** to develop a solution that perfectly matches your vision: 800-865-2112 or kiosks@peerless-av.com

Direct View LED Video Wall Mounting Systems

With over 75 years of audio visual experience, our commitment to the creation of cutting-edge technology and standard-setting solutions has elevated us to the status of the industry's most innovative leader. Our Dedicated SEAMLESS LED Solutions Team sets the bar for high quality design, while achieving the pinnacle of aesthetic results. Our dynamic group of LED professionals include structural and mechanical engineers, product managers, project managers, installers, as well as sales and service personnel. The entire Peerless-AV® LED Solutions Team is there every step of the way to ensure every customer receives SEAMLESS product support & service.

Choose between a dedicated solution shown below or create a custom LED video wall mounting system to fit your specific needs. Visit peerless-av.com/SEAMLESS to learn more.

SMARTMOUNT. LED Video Wall Mounting Systems

The SmartMount® LED Video Wall Mounting Systems offer slim, space-saving & aesthetically appealing designs that can be adapted to support all of your LED video wall needs.



Flat LED
Video Wall Mount

model number:
DS-LEDF

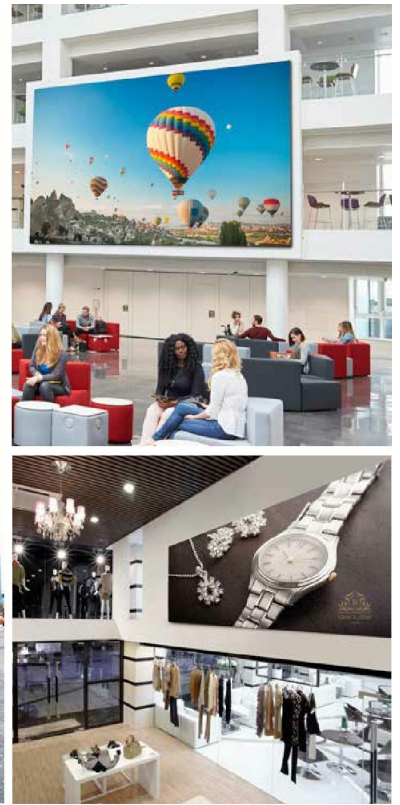


Pop-Out LED
Video Wall Mount

model number:
DS-LEDP

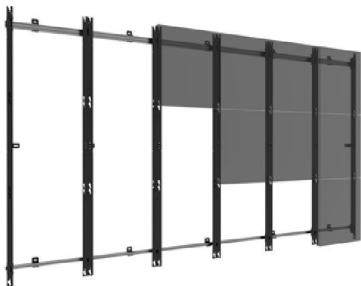
Get your project started right with a quick turnaround quote!





Dedicated LED Mounting Solutions

The Peerless-AV® SEAMLESS LED Solutions Team specializes in custom LED solutions. These are dedicated LED mounting solutions created specifically for our partners' LED displays.



SAMSUNG

Smart LED Signage
IF Series

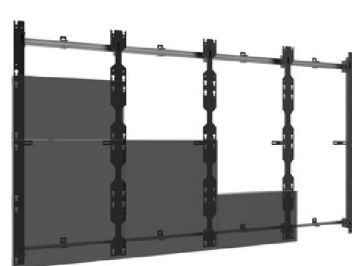
model number:
DS-LEDIF models



Abgen
LED

Acclaim Series

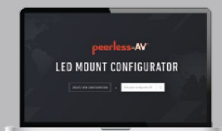
model number:
DS-LEDA27 models



NEC

Direct View LED
F-Series

model number:
DS-LEDNECF models



Visit LEDConfigurator.peerless-av.com

SmartMount® Full Service Video Wall Mounts

The SmartMount® video wall series is a comprehensive line of mounts that provide solutions for any environment. Limitless configurations are possible with the ability to accommodate displays in both landscape and portrait orientations. With features such as the tool-less micro-adjustment and the quick release pop out mechanism, we give you the tools you need to create the perfect video wall.



Video Wall Mount Locator app available in iTunes, Google Play and a mobile HTML5 version for DS-VW755S, DS-VW765-LAND, DS-VW765-POR, DS-VW765-LQR OR DS-VW765-PQR



Supreme Full Service Video Wall Mount



Supreme Full Service Video Wall Mount with Quick Release



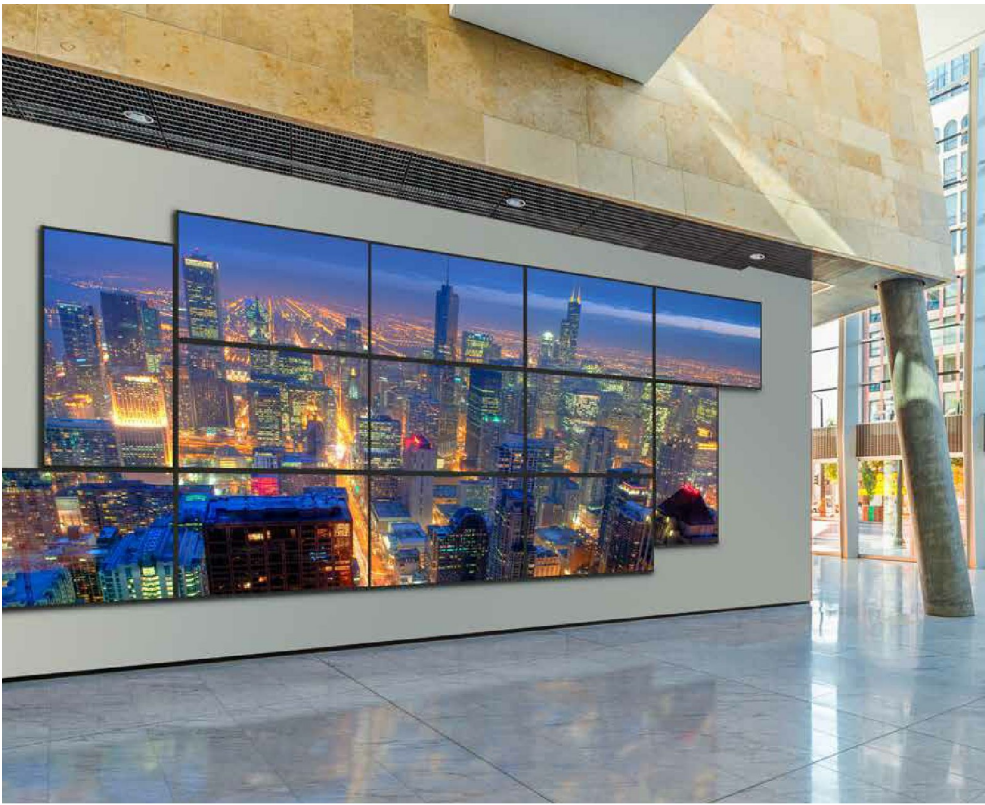
Full Service Thin Video Wall Mount with Quick Release

DS-VW775	DS-VW775-QR	DS-VW755S
<p>Display Size 46" to 60"</p>	<p>Display Size 46" to 60"</p>	<p>Display Size 46" to 65"</p>
<p>Max Load 125lb (56.8kg)</p>	<p>Max Load 125lb (56.8kg)</p>	<p>Max Load 80lb (36.4kg)</p>
<p>VESA® Pattern 200 x 200 up to 600 x 400mm</p>	<p>VESA® Pattern 200 x 200 up to 600 x 400mm</p>	<p>VESA® Pattern 200 x 200 up to 400 x 400mm 600 x 400mm with required accessory</p>

- Tool-less micro-adjustment on the x, y and z axis

- Tool-less micro-adjustment on the x, y and z axis
- Gentle press to release provides convenient display access

- ADA compliant when paired with displays ≤ 2" deep and 8-point tool-less micro-adjustment



Accessories page 23



Full Service
Video Wall Mount
Landscape

Full Service
Video Wall Mount
with Quick Release
Landscape

Full Service
Video Wall Mount
with Quick Release

Special Purpose
Video Wall Mount

DS-VW765-LAND	DS-VW765-LQR	DS-VW795-QR	DS-VWM770
Display Size 40" to 65"	Display Size 46" to 65"	Display Size 65" to 95"	Display Size 46" to 70"
Max Load 125lb (56.8kg)	Max Load 125lb (57kg)	Max Load 225lb (102kg)	Max Load 125lb (56kg)
VESA® Pattern In 100mm increments, starting at 200 x 200 up to 700 x 400mm	VESA® Pattern 200 x 200 up to 700 x 400mm	VESA® Pattern 200 x 200 up to 600 x 600mm	VESA® Pattern 300 x 300, 400 x 200, 400 x 300, 400 x 400, 600 x 400mm

- Tool-less micro-adjustments at 8 points allows the mount to overcome uneven walls and creates a seamless video wall display

- Quick release pop out mechanism provides convenient display access in recessed applications

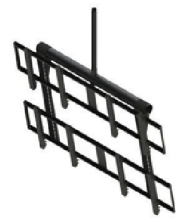
- Tool-less micro-adjustments at 8 points allows the mount to overcome uneven walls and creates a seamless video wall display

- Display attaches to the mount in 15° increments 0°-360° and has 10-point tool-less micro-adjustment

SmartMount® Video Wall Solutions

Whether your digital signage application calls for a flat video wall mount, portable cart, floor stand, or ceiling mount, you can find a solution in our SmartMount® video wall series. These solutions provide endless creative possibilities and offer just what you need for a quick set up and breakdown.

RoHS



Ultra Thin Flat Video Wall Moun

Flat Video Wall Mount

2x2 Flat Video Wall Mount

2x2 Video Wall Ceiling Mount

DS-VW650

DS-VW665

DS-VW655-2X2

DS-VWT955-2X2

Display Size
Ultra-thin Displays
40" or larger

Display Size
40" to 65"

Display Size
46" to 55"

Display Size
40" to 55"

Max Load
75lb (34kg)

Max Load
125lb (57kg)

Max Load
600lb (272kg)

Max Load
400lb (182kg)

VESA® Pattern
In 100mm increments,
starting at 200 x 200
up to 600 x 400mm

VESA® Pattern
200 x 200 up to
700 x 400mm

Mounting Pattern
1886 x 1137mm
(74.25"W x 44.75"H)

VESA® Pattern
200 x 200 up to
600 x 400mm

- ADA compliant when paired with displays ≤ 3" deep

- Tool-less micro-adjustment at 8 points seamlessly align the displays

- 2x2 video wall mounting kit
- Horizontal adjustment makes mounting and aligning displays quick and easy

- Tilt options of 5°, 10°, 15° and 20° for perfect viewing angle and 8-point tool-less micro-adjustment



Accessories page 23



1x3 Video Wall Cart & Pedestal Mount

DS-C560-1X3 | DS-S560-1X3

Display Size
46" to 60"

Max Load
375lb (170kg)
125lb per display

VESA® Pattern
200 x 200 up to
600 x 400mm



2x2 Video Wall Cart & Pedestal Mount

DS-C560-2X2 | DS-S560-2X2

Display Size
46" to 60"

Max Load
500lb (227kg)
125lb per display

VESA® Pattern
200 x 200 up to
600 x 400mm



3x2 Video Wall Cart & Pedestal Mount

DS-C555-3X2 | DS-S555-3X2

Display Size
46" to 55"

Max Load
600lb (272kg)
100lb per display

VESA® Pattern
200 x 200 up to
600 x 400mm



3x3 Video Wall Cart & Pedestal Mount

DS-C555-3X3 | DS-S555-3X3

Display Size
46" to 55"

Max Load
900lb (409kg)
100lb per display

VESA® Pattern
200 x 200 up to
600 x 400mm

- Tool-less micro-adjustment at 8 points seamlessly aligns the displays

- Adaptors feature a quick connect latch for automatic engagement with the mounting rails and ease of set-up

- 4x2 configuration also available: DS-C555-4X2/DS-S555-4X2
- 4x3 configuration also available: DS-C555-4X3/DS-S555-4X3

- 2x2 Back-to-Back Video Wall Pedestal Mount also available: DS-S560-B2X2

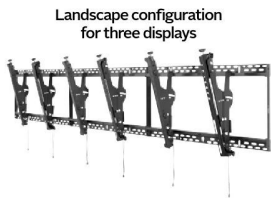
SmartMount[®] Digital Menu Board Mounts

Peerless-AV[®] offers menu board solutions for both wall and ceiling applications to fit all environments. The SmartMount[®] Digital Menu Board Mounts are perfect for Quick Service Restaurants, Cafeterias, Bars and more. With a one-to-one ordering process and functionality features that reduce installation time and costs, these digital menu board mounts are the perfect solution for your digital signage needs.

RoHS



Landscape



Landscape configuration for three displays



Digital Menu Board Wall Mount with Height & Depth Adjustment

Digital Menu Board Ceiling Mount with Height & Depth Adjustment - Landscape

Landscape	Landscape	Portrait	2x1 Configuration	2x1 Configuration	3x1 Configuration	3x1 Configuration
DS-MBZ642L	DS-MBZ647L	DS-MBZ647P	DS-MBZ942L-2X1	DS-MBZ947L-2X1	DS-MBZ942L-3X1	DS-MBZ947L-3X1
Display Size 40" to 42"	Display Size 46" to 65"	Display Size 42" to 48"	Display Size 40" to 42"	Display Size 46" to 48"	Display Size 40" to 42"	Display Size 46" to 48"
Max Load 100lb (45.5kg)	Max Load 100lb (45.5kg)	Max Load 100lb (45.5kg)	Max Load 200lb (90.9kg)	Max Load 200lb (90.9kg)	Max Load 300lb (136kg)	Max Load 300lb (136kg)
Mounting Pattern 880 x 400mm (34.65"W x 15.75"H)	Mounting Pattern 975 x 400mm (38.40"W x 15.75"H)	Mounting Pattern 550 x 400mm (21.65" x 15.75")	Mounting Pattern 1769 x 400mm (69.65"W x 15.75"H)	Mounting Pattern 1960 x 400mm (77.15"W x 15.75"H)	Mounting Pattern 2658 x 400mm (104.65"W x 15.75"H)	Mounting Pattern 2944 x 400mm (115.90"W x 15.75"H)

- Tool-less height adjustment and four-corner depth adjustment to alleviate issues with wall imperfections and fine-tuning

- Uses a one-to-one ordering process for an effortless digital signage solution

- Connecting wall plates create a continuous mounting surface for ease of display alignment

- Vertical adjustment on each bracket for post-installation leveling and height adjustment fine tuning

- Quick connect latch automatically engages the wall plate when mounting the display for a speedy set-up and peace of mind



Multi-Display Ceiling Mounts

Peerless-AV® offers a variety of multi-display systems that can effectively communicate your digital signage message. Whether you need to showcase two or as many as six displays, utilize in-line or curvilinear configurations, our solutions are designed with superior aesthetics in mind for a sleek and finished look.

RoHS

Accessories page 23



Dual-Display Ceiling Mount



Multi-Display Ceiling Mount with Three Telescoping Arms



Multi-Display Ceiling Mount with Four Telescoping Arms



Multi-Display Ceiling Mount with Six Telescoping Arms

DST970X2	DST980-3	DST975-4	DST942-6
Display Size 40" to 70"	Display Size 37" to 80"	Display Size 37" to 75"	Display Size 37" to 42"
Max Load 250lb (113kg)	Max Load 495lb (225kg) 165lb (75kg) per display	Max Load 500lb (227kg) 125lb (57kg) per display	Max Load 480lb (218kg) 80lb (36kg) per display
Mounting Pattern 600 x 400mm (23.62"W x 15.75"H)	Mounting Pattern 730 x 405mm (28.75"W x 15.95"H)	Mounting Pattern 730 x 405mm (28.75"W x 15.95"H)	Mounting Pattern 730 x 405mm (28.75"W x 15.95"H)

- Independent swivel and tilt allow each display to be set at the perfect viewing angle

- Arms telescope to allow for the desired display spacing

- 0°-20° of tilt and 360° of swivel

- Bottom cover provides aesthetically pleasing cable management

SmartMount® Media Storage, Back-to-Back, Cable & Truss Mounts

Media device storage is simple and effective with the SmartMount® Media Storage Mounts. Available solutions include flat/tilt wall and ceiling mounts and back-to-back ceiling mounts. The Cable Mount is an ideal digital signage mounting solution that will enhance your in-store window display.



Accessories page 23



Flat/Tilt Wall Mount with Media Device Storage
Accommodates media device up to 12" x 13" x 2.4" (305 x 330 x 61mm)

Flat/Tilt Ceiling Mount with Media Device Storage
Accommodates media device up to 16" x 11" x 3.25" (406 x 279 x 83mm)

Back-to-Back Ceiling Mount with Media Device Storage
Provide storage for standard size computers

Floor to Ceiling Cable Mount
Landscape/Portrait

Truss Mount
For 12" truss with 2" Outer Diameter Tubing

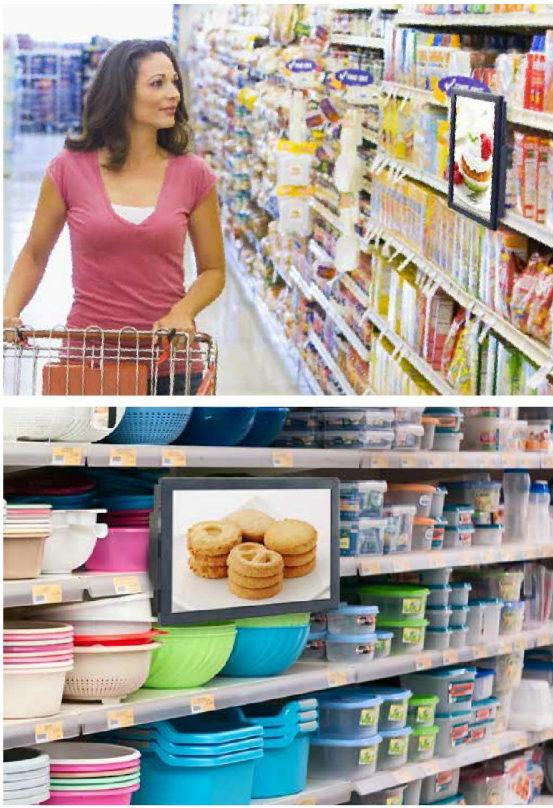
DST660	DST995	DST965	DSF265L / DSF265P	DSF290
Display Size 40" to 60"	Display Size 40" to 95"	Display Size 40" to 65"	Display Size 46" to 65"	Display Size 40" to 90"
Max Load 125lb (57kg)	Max Load 225lb (102kg)	Max Load 300lb (136kg)	Max Load 65lb (29.5kg)	Max Load 175lb (79kg)
VESA® Pattern 200 x 100 up to 400 x 400mm	VESA® Pattern In 100mm increments, starting at 200 x 200 up to 400 x 400mm	Mounting Pattern 730 x 405mm (28.75"W x 15.95"H)	Mounting Pattern 600 x 400mm	VESA® Pattern 100, 200, 300 and 400mm

- Security hardware to deter tampering and theft

- Easy access to media player for maintenance or repair

- Mounting solution that attaches at any point along the cable making it ideal for store windows

- Can be attached to the truss running vertically or horizontally to accommodate all applications



Gondola & Shelf Mounts

Peerless-AV® offers gondola shelving mounts for point of sale advertising. The Gondola and Shelf Mounts are ideal for retail or grocery store applications to digitally display pricing, sales, advertisements, and more to enhance the customer experience throughout the store. With beneficial features such as security hardware, and the ability to mount the display in both landscape or portrait orientation, these mounts are made for retail environments.

RoHS

Accessories page 23



DSF210-GFC

Flat Gondola Mount
For Samsung DB10D Display



DSF210-SHC

Flat Shelf Mount
For Samsung DB10D Display

with Rear Half Cover	with Rear Full Cover	with Rear Half Cover	with Rear Full Cover
DSF210-GHC	DSF210-GFC	DSF210-SHC	DSF210-SFC
Display Size 10"	Display Size 10"	Display Size 10"	Display Size 10"
Max Load 5lb (2.3kg)	Max Load 5lb (2.3kg)	Max Load 5lb (2.3kg)	Max Load 5lb (2.3kg)
Gondola Widths 24" to 48" (610-1219mm)	Gondola Widths 24" to 48" (610-1219mm)		

- Display position can be adjusted to accommodate the shelf depth
- Holds the display in either portrait or landscape orientation
- Internal cable management

- Compatible with most gondola shelving
- Holds the display in either portrait or landscape orientation
- Internal cable management

Modular Series

The Modular Series features connectable components to meet virtually any application, making them the most versatile and easy to install products available. Choose from a variety of kits including ceiling, floor-to-ceiling, and free standing in either single or dual poles, or create your own video wall configuration for your unique installation. The modular series provides a complete digital signage solution for a wide range of applications.



Modular Series Ceiling Kit
 One 39" (1m) extension pole included with MOD-FPSKIT100(-B)
 One 59" (1.5m) extension pole included with MOD-FPSKIT150(-B)

MOD-FPSKIT100/150(-B)

Display Size
 Up to 75"

Max Load
 132lb (60kg) per display
 Up to 2 displays when used back to back using MOD-FPMD accessory.

VESA® Pattern
 up to 600 x 400mm



Modular Series Floor-to-Ceiling Kit

One 118" (3m) extension pole included

MOD-FCSKIT300(-B)

Display Size
 Up" to 75"

Max Load
 132lb (60kg) per display
 Up to 2 displays when used back to back using MOD-FPMD accessory.

VESA® Pattern
 up to 600 x 400mm



Modular Series Dual Pole Ceiling Kit

Two 59" (1.5m) extension poles included

MOD-FPS2KIT150(-B)

Display Size
 46" to 90"

Max Load
 211lb (96kg) per display
 Up to 2 displays when used back to back using MOD-FPMD2 accessory.

VESA® Pattern
 up to 600 x 400mm



Modular Series Dual Pole Floor-to-Ceiling Kit

Two 118" (3m) extension poles included

MOD-FCS2KIT300(-B)

Display Size
 46" to 90"

Max Load
 211lb (96kg) per display
 For multi screen applications the max system load is 411lb (192kg) with a maximum of 3 displays positioned on one side of the poles or 6 displays back to back using MOD-ASC2 and MOD-FPMS2 or MOD-FPMD2 accessories.

VESA® Pattern
 up to 600 x 400mm

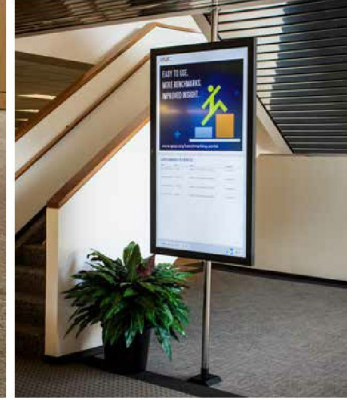
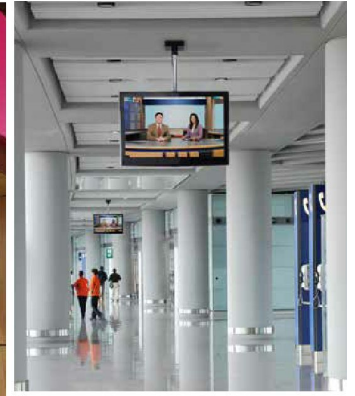
- Includes simple hook-on feature, with +20° to -5° tilt and locks at every 5° increment

20

- Modular Series poles can be cut to length on the jobsite

- Securely mounts to wood or concrete ceilings and floors to accommodate many environments

- Additional displays can be stacked on the dual poles for added versatility to the installation



To "build your own" solution, contact Peerless-AV® Customer Care.



Modular Series Dual Pole Floor-to-Wall Kit

Two 118" (3m) extension poles included

MOD-FW2KIT300(-B)

Display Size
46" to 90"

Max Load
211lb (96kg) per display
For multi screen applications the max system load is 411lb (192kg) with a maximum of 3 displays positioned on one side of the poles using MOD-ASC2 and MOD-FPMS2 accessories.

VESA® Pattern
up to 600 x 400mm



Modular Series Dual Pole Free Standing Kit

Two 78" (2m) extension poles included

MOD-FPP2KIT200(-B)

Display Size

Max Load
211lb (96kg) per display
For multi screen applications the max system load is 411lb (192kg) with a maximum of 2 displays positioned on one side of the poles or 4 displays back to back using MOD-ASC2 and MOD-FPMS2 or MOD-FPMD2 accessories.

VESA® Pattern
up to 600 x 400mm



Modular Series Dual-Pole Wall Mount Interface & Flat Mount

MOD-AWM2

Display Size
46" to 90"*

Max Load
211lb (96kg) per display when used as a display mount*

*Reference mount specifications when used with optional Flat, Tilt or Video Wall Mounts

VESA® Pattern
200, 300 & 400mm when used as a display mount*



3x3 LANDSCAPE VIDEO WALL
Shown in Modular Series Dual Pole Floor-to-Ceiling configuration
(SmartMount® Full Service Video Wall Mount with Quick Release, DS-VW765-LQR, required)



3x2 PORTRAIT VIDEO WALL
Shown in Modular Series Dual Pole Floor-to-Wall configuration
(SmartMount® Full Service Video Wall Mount with Quick Release, DS-VW765-PQR, required)

- Display can be positioned at any point along the height of the pole for maximum versatility

- Integrated cable management runs through poles with open access at both ends for ease of use

- Provides compatibility with Peerless-AV Flat, Tilt and Video Wall mounts onto the Modular Series Dual Pole configurations

Carts & Stands

Peerless-AV® carts and stands are compatible with a wide range of display sizes, and are perfect for portability or when mounting to a wall is not an option. These solutions provide a safe and secure mounting platform for displaying digital content in public areas like conference rooms, lobbies or convention centers.



Accessories page 23



Flat Panel Floor Stand



Flat Panel Floor Stand



Universal Kiosk Stand



Flat Panel Cart



Flat Panel Cart

FPZ-600	FPZ-670	SS575K	SR560M	SR598
Display Size Up to 75"	Display Size Up to 90"	Display Size 32" to 75"	Display Size 32" to 75"	Display Size 55" to 98"
Max Load 200lb (90.7kg) per display up to four displays	Max Load 400lb (181.4kg) total 200lb (90.7kg) per display up to two displays	Max Load 150lb (68.3kg) display 25lb (11.4kg) media player	Max Load 150lb (68.2kg) display 10lb (4.55kg) shelf	Max Load 300lb (136.1kg)
VESA® Pattern 100, 200 x 100 and 200 x 200mm Supports additional VESA® patterns with PLP display adaptor, sold separately	VESA® Pattern 200 x 200mm Supports additional VESA® patterns with PLP display adaptor, sold separately	VESA® Pattern 200 x 200 up to 600 x 400mm	Mounting Pattern 200 x 200 up to 600 x 400mm	VESA® Pattern 200 x 200 up to 900 x 600mm

- Fits single or back-to-back displays (up to four with additional dual-display cartridge)

- Base cover is designed to conceal content drivers and surge protector

- Secure media player storage below the display with simple access to the device without having to remove the display

- Display and component shelf can be located anywhere along the column for perfect component placement & viewing height

- Pre-assembled base provides rigidity, stability and quick assembly

Wireless System

Keep your conference and meeting rooms up to date by streaming HD content wirelessly with Peerless-AV's PeerAir™ Pro Wireless AV Multi-Display System.



peerAir™ | PRO

Wireless AV Multi-Display System Powered by HD Flow™ 3



HDS300

Wireless Distance
210ft (64m)

Signal Support
1080p (60Hz)

Wireless Protocol
802.11n

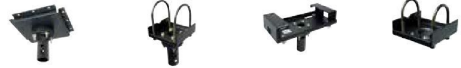
Compression Standard
h.264 Encoding

Content Protection
HDCP Compliant

- Transmits through walls, floors, and ceilings for multi-room streaming capability
- Plug and play setup requires no software or driver installation
- Multicast up to six PeerAir™ Pro Wireless Receivers*
*Requires additional receiver units

Accessories

for Digital Signage Collection



DCS400 Multi-Display Structural Ceiling Stress Decoupler
DCT300 Multi-Display Truss Ceiling Stress Decoupler
DCT500/600/700/800/900 Multi-Display I-beam Clamps
ACC600 Multi-Display Interface Bracket



CMJ470/480/490 Ceiling Plates
Additional ceiling plates available. Visit peerless-av.com
PLCM-2 Ceiling Mounted Tilt Box for up to 90° Displays
PLCM-4 Ceiling Mounted Stackable Tilt Box for up to 90° Displays



ACC604 Dual-Display Cartridge for Flat Panel Stand, FPZ-600
MIS735 Dual-Display Cartridge for Flat Panel Stand, FPZ-670
DSX750 Media Player Holder Accessory
ACC-UCM Universal AV Component Mount
Can be mounted to various wall surfaces. Peerless-AV® products or directly to the TV's VESA® pattern.



ADD models Fixed or Adjustable Extension Columns for Ceiling Decouplers
Various lengths available. Visit peerless-av.com
EXT models Fixed Extension Columns
Various lengths available. Visit peerless-av.com
AEC models Adjustable Extension Columns
Various lengths available. Visit peerless-av.com



ACC325 Accessory Shelf for Flat Panel Stand, FPZ-600
ACC615 Metal Stud Fastener Kit - 6 togglers
ACC-DHK Display Handling Kit
ACC-DHP6 Display Handling Replacement Pads



PLP-UNL Universal I-Shaped Display Adaptor for 32" to 90" Displays
PLP-V models Dedicated Display Adaptor
Various models available. Visit peerless-av.com
ACC-V800X VESA® 800 x 400mm Adaptor
ACC310 Feet Accessory for SmartMount® Carts and Stands



ACC320 Electrical Outlet Strip with Cord Wrap for SmartMount® Carts and Stands
ACC-VCS Video Conferencing Camera Shelf for SmartMount® Carts and Stands
ACC-LA Laptop Arm for SmartMount® Carts and Stands



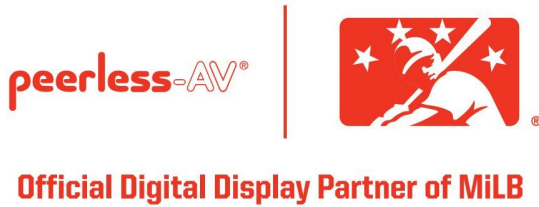
DS-ACC765 Cable Release Kit for Full Service Video Wall Mounts, DS-VW765-LAND & DS-VW765-POR
DS-VWS##(-P) Video Wall Spacer Kit
CLCOV models Xtreme™ High Bright Outdoor Display Covers



peerless-AV®

Driving Technology Through Innovation

For over 75 years, passion and innovation continue to drive Peerless-AV® forward. We proudly design and manufacture the highest quality products, ranging from outdoor displays to complete kiosk solutions, digital signage mounts to wireless systems. Whether a full-scale global deployment or custom project, Peerless-AV develops meaningful relationships and delivers world-class service. In partnership with Peerless-AV, you are trusting an award-winning team of experts who will support your business every step of the way.

For more information, visit peerless-av.com.



 peerless-av.com
 800-865-2112

© 2019 Peerless Industries, Inc. Peerless-AV is a registered trademark of Peerless Industries, Inc. All rights reserved. Other parties' marks are the property of their respective owners.

All Minor League Baseball trademarks and copyrights are used with permission. All rights reserved. Visit MiLB.com.

LIT-1225 rev.13