

peerless-AV[®]
Hospitality
Collection





Make your guest's experience one-of-a-kind

Peerless-AV® has provided innovation in hospitality for over 50 years. We understand the service industry and the importance of creating that one-of-a-kind guest experience. Keeping guests entertained and informed is paramount to staying competitive and Peerless-AV has the industry's most comprehensive line of solutions for outfitting the entire hotel facility, including solutions for digital signage advertising, wayfinding, interactive and outdoor displays and kiosks.

- Peerless-AV is the **brand standard** for leading hotel chains and the **most trusted** mounting solution in the hotel industry.
- Peerless-AV has a **dedicated hospitality team** who works directly with TV Manufacturers to ensure mounting solutions are up-to-date.
- Our **Custom Solutions Team** can help you solve even the most complex design and technology integration challenges.
- **Peerless-AV products** give guests the experience they want, with the décor and aesthetics you demand.
- Call a **dedicated Peerless-AV sales representative** who can answer all of your hospitality questions.



Outdoor TVs



TV Wall Mounts



Desktop Mounts



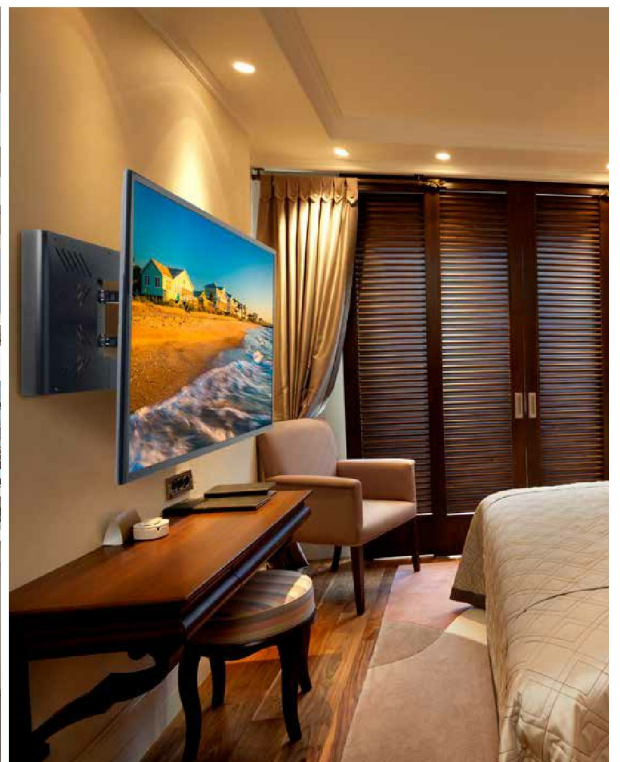
Stands & Carts



Kiosk Solutions



Video Wall Mounts





Outdoor Solutions

The unique design of the Peerless-AV® Xtreme™ High Bright Outdoor Displays and UltraView™ UHD Outdoor TVs are perfect for outdoor entertainment or digital signage applications. Mount the displays with confidence using Peerless-AV's corrosion resistant and stainless steel mounting solutions. Add the award-winning Xtreme™ Outdoor Soundbar for the full outdoor audio experience or the Xtreme™ Outdoor IR Touch Overlay for an interactive experience. These weather-resistant solutions are ideal for hospitality installations including hotel pool decks, restaurant patios, and more.



Accessories page 15



Xtreme™ High Bright Outdoor Displays



Xtreme™ Outdoor IR Touch Overlays

For 43"/49"/55" Xtreme™ High Bright Outdoor Displays



IRTO43/49/55-200

Environmental Rating
IP65

Touch Point
10 Point Maximum

Support
HID Compliant



COMING SOON

XHB432	XHB492	XHB552	XHB652
Display Size 43" Diagonal	Display Size 49" Diagonal	Display Size 55" Diagonal	Display Size 65" Diagonal

Resolution
1920 x 1080

Operating Temperature
-31°F to 140°F

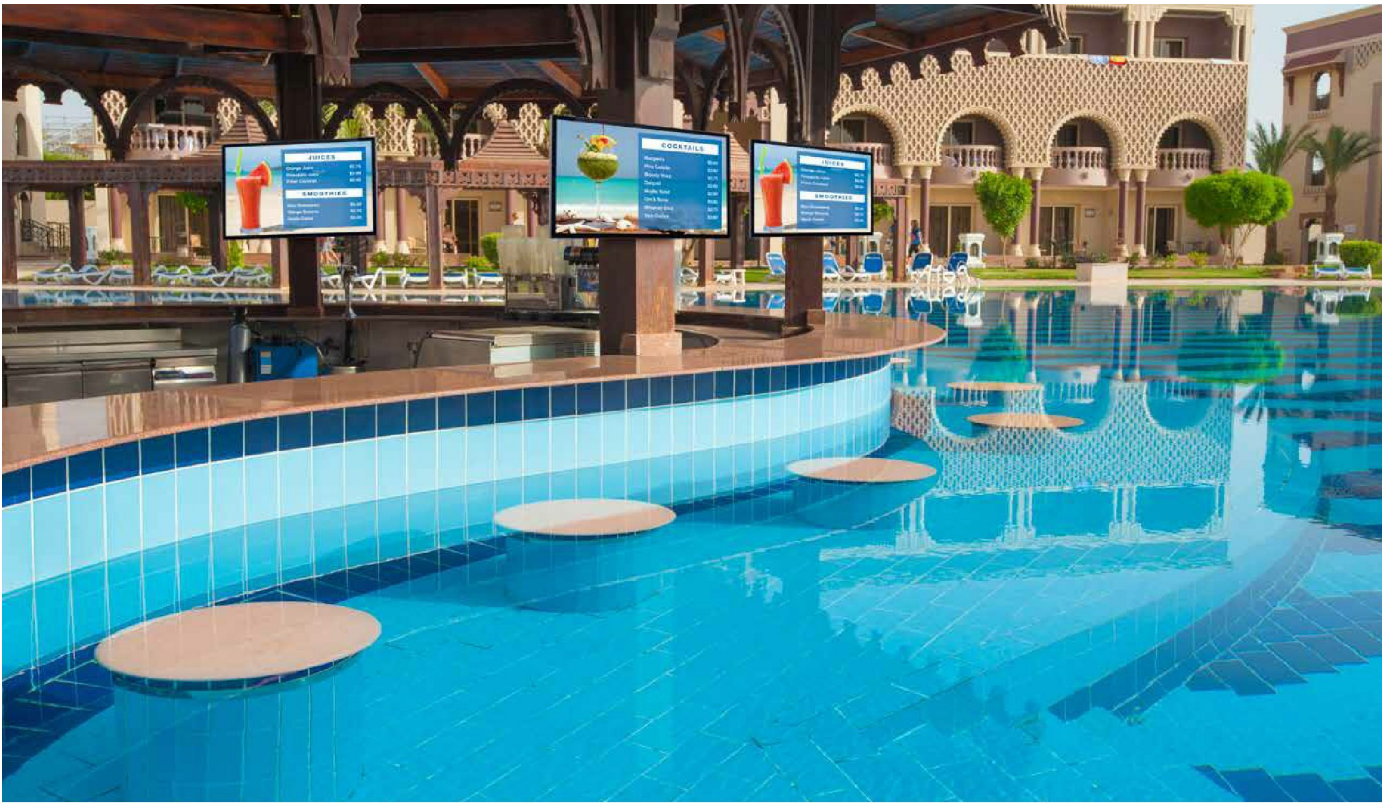
Environmental Rating
IP68

- Daylight readable display, offering 2500nits of light output and FHD 1080p resolution for a bright, crisp picture

- Highest environmental rating (IP68) prevents the ingress of foreign materials, such as water, dust, moisture and insects, from entering the display

- Patented Dynamic Thermal Transfer™ system keeps internal components safely warmed in extreme cold and properly cooled in extreme heat

- Easily transform the Xtreme™ display into an interactive touch screen by adding the Xtreme™ Outdoor IR Touch Overlay accessory



UltraView™ UHD Outdoor TVs



Xtreme™
Outdoor Soundbar



Outdoor Universal
Tilt Wall Mount



Outdoor Articulating
Wall Mount

4K ULTRA HD™ RoHS FC IP eUL.us Bluetooth® SGS FC IP

RoHS FC IP eUL.us RoHS

RoHS FC IP eUL.us RoHS

UltraView™ UHD Outdoor TVs			Xtreme™ Outdoor Soundbar	Outdoor Universal Tilt Wall Mount	Outdoor Articulating Wall Mount
UV492	UV552	UV652	SPK-080	EPT650	ESA763PU
TV Size 49" Diagonal	TV Size 55" Diagonal	TV Size 65" Diagonal	TV Size 42" and above	TV Size 32" to 75"	TV Size 32" to 80"
Resolution 3840 x 2160			Amplifier Ratings 200 Watts Total System Power	Max Load 175lb (79kg)	Max Load 200lb (91kg)
Operating Temperature -22°F to 122°F			Environmental Rating IP65	Mounting Pattern 732 x 406mm (28.84"W x 15.94"H)	Mounting Pattern 730 x 405mm (28.74"W x 15.94"H)

- IPS panel provides color accuracy, even at the harshest of angles
- Supports HDMI 2.0 and HDCP 2.2 for increased compatibility with 4K sources
- High TNi panel allows for direct sunlight readability without the risk of isotropic blackout

- Digital optical audio input and standard analog audio input allow for use with all leading outdoor TVs

- Made of corrosion resistant materials for weather resistance

- Wood, concrete and cinder block mounting hardware included



OLED TV Wall Mounts

If you're looking for an OLED TV mount that is ultra-slim, easy to install and adjust to effortlessly find the perfect viewing angle, look no further - Peerless-AV® has created it. Designed exclusively with the aesthetics and functionality of LG's OLED TVs in mind, Peerless-AV mounts are versatile and sleek. Choose between flat, pull-out pivot or articulating models that offer contemporary, lightweight designs to fit perfectly into any room décor.

RoHS



Flat Wall Mount for OLED TVs



Articulating Wall Mount for OLED TVs*

*Special order item with extended lead times, please contact Peerless-AV for more information.



Pull-Out Pivot Wall Mount for OLED TVs

PF640	SJA-OLED	HPF-OLED
<p>Compatible OLED Models For LG 55/65EW960H and OLED 55/65B7P</p>	<p>Compatible OLED Models For LG 55/65EW960H and OLED 55/65B7P</p>	<p>Compatible OLED Models For LG 55/65EW960H and OLED 55/65B7P</p>
<p>Max Load 100lb (45kg)</p>	<p>Max Load 60lb (27kg)</p>	<p>Max Load 60lb (27kg)</p>
<p>Mounting Pattern up to 450 x 305mm (17.72" W x 12.01" H)</p>	<p>VESA® Pattern 300 x 200mm</p>	<p>VESA® Pattern 300 x 200mm</p>

- Ultra-low profile keeps OLED only 1.26" (32mm) from wall

- Up to 50° of side-to-side swivel

- Chic pull handle aids in moving TV

- Pull-out pivot provides quick maintenance access

- Built in swivel up to ±25°



SMARTMOUNT[®]

Flat & Tilt Wall Mounts



With Peerless-AV's line of SmartMount[®] flat and tilt wall mounts, you'll get versatile and easy to install solutions. The flat wall mounts offer a low-profile design that complement today's ultra slim displays while the tilt wall mounts are designed to create the optimal viewing angle.

NEED MORE STORAGE?

The ACC-UCM Universal AV Component Mount works perfectly to hold a media player behind the TV. Check it out on page 15.



Accessories page 15



SMARTMOUNT.

Universal Flat Wall Mount

os**h**pd
OPM-0211-13

SF640

Display Size
32" to 50"

Max Load
150lb (68kg)

Mounting Pattern
450 x 405mm
(17.72"W x 15.95"H)

SMARTMOUNT.

Universal Flat Wall Mount

os**h**pd
OPM-0211-13

SF650

Display Size
39" to 75"

Max Load
175lb (79kg)

Mounting Pattern
742 x 405mm
(29.21"W x 15.95"H)

SMARTMOUNT.

Universal Flat Wall Mount

os**h**pd
OPM-0211-13

SF660

Display Size
39" to 80"

Max Load
200lb (91kg)

Mounting Pattern
824 x 405mm
(32.44"W x 15.95"H)

SMARTMOUNT.

Universal Tilt Wall Mount

os**h**pd
OPM-0211-13

ST640

Display Size
32" to 50"

Max Load
150lb (68kg)

Mounting Pattern
458 x 405mm
(18.02"W x 15.95"H)

SMARTMOUNT.

Universal Tilt Wall Mount

os**h**pd
OPM-0211-13

ST650

Display Size
39" to 75"

Max Load
175lb (79kg)

Mounting Pattern
742 x 405mm
(29.21"W x 15.95"H)

SMARTMOUNT.

Universal Tilt Wall Mount

os**h**pd
OPM-0211-13

ST660

Display Size
39" to 80"

Max Load
200lb (91kg)

Mounting Pattern
824 x 405mm
(32.44"W x 15.95"H)

- Low-profile design holds display only 1.20" (30mm) from the wall

- Up to 0.25" (6mm) of vertical adjustment on each universal display adaptor bracket for post-installation leveling and height adjustment fine-tuning

- Adjustable up to 15° of forward tilt and -5° backward tilt for optimal viewing angle

- Up to 0.25" (6mm) of vertical adjustment on each universal display adaptor bracket for post-installation leveling and height adjustment fine-tuning



Universal Pull-Out Swivel, Pivot & Articulating Wall Mounts

Peerless-AV® pull-out swivel, pivot and articulating mounts are versatile and sleek. The pull-out swivel mounts are perfect for on-wall or recessed/in-furniture applications, while the pivot and articulating mounts allow for viewing in any part of the room.

NEED MORE STORAGE?

The ACC-UCM Universal AV Component Mount works perfectly to hold a media player behind the TV. Check it out on page 15.



Accessories page 15

* Display ranges noted are general. To see if a display size outside of this range will work with our mount, please consult with Peerless-AV hospitality sales team members Kathy Petrin at kpetrin@peerless-av.com or Megan Zeller at mzeller@peerless-av.com with your exact TV make and model for compatibility review.



SMARTMOUNT.

Pull-Out Pivot Wall Mount

Pull-Out Pivot Wall Mount with Tilt

Pull-Out Pivot Wall Mount

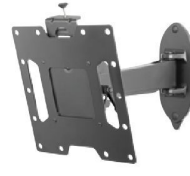
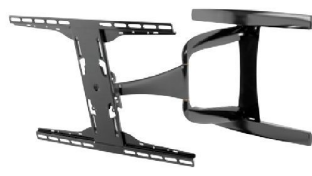
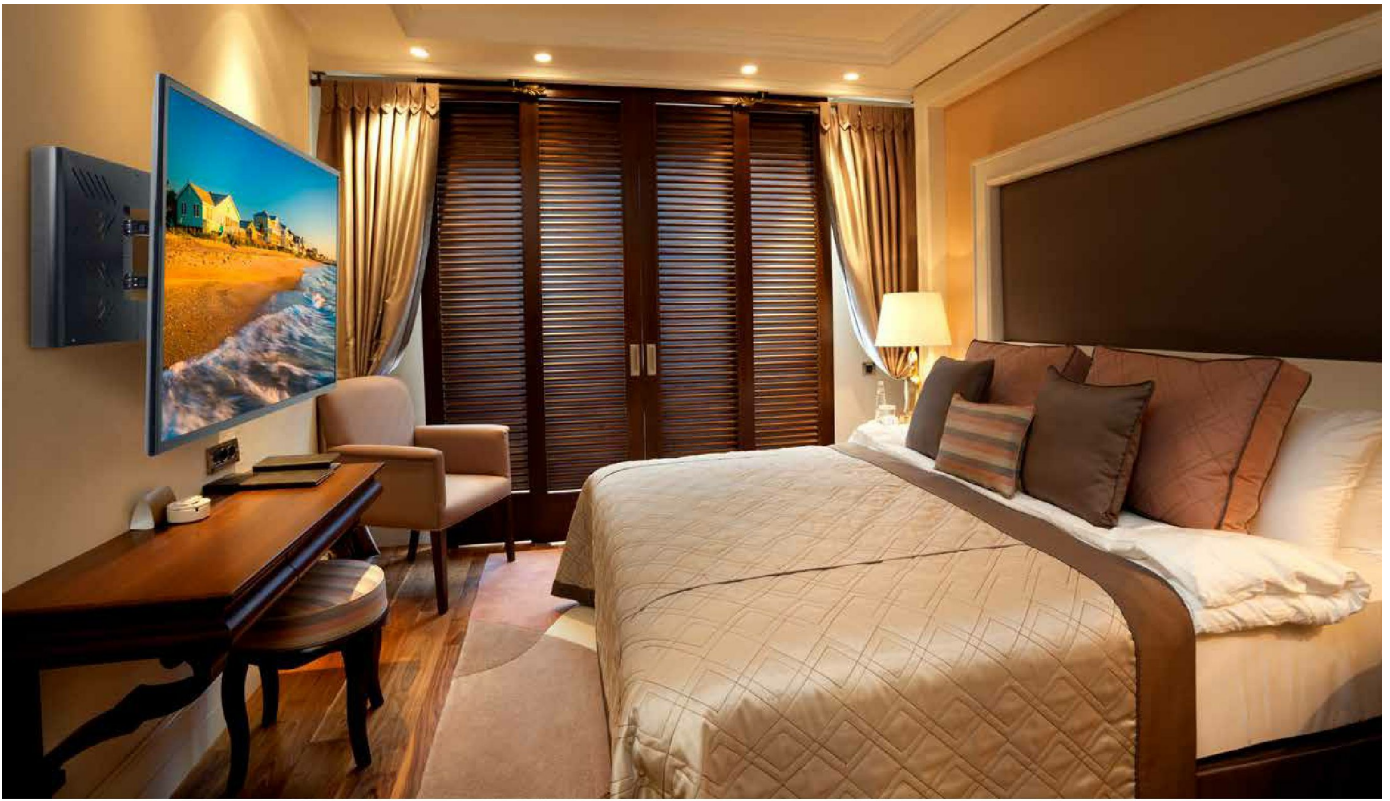
Articulating Wall Arm with Set Top Box Enclosure

HPF650	SP840	FPS-1000	HA746-STB
<p>Display Size* 32" to 65"</p> <p>ACC-M835 may be required for select displays</p>		<p>Display Size 32" to 80"</p>	<p>Display Size* 43" to 55"</p>
<p>Max Load 60lb (27kg)</p>		<p>Max Load 150lb (68kg)</p>	<p>Max Load 80lb (36kg)</p>
<p>Mounting Pattern 200 x 100 to 400 x 400mm</p>		<p>VESA® Pattern 100 x 100 and 200 x 100mm <i>Additional hole patterns require dedicated PLP or universal PLP adaptor plate purchase.</i></p>	<p>Mounting Pattern 200 x 100 to 400 x 400mm</p>

- Lightweight design and in-furniture application make mount well suited for use with today's LEDs

- Essential for on-the-wall, low-profile, single or multi-display video wall installations or hospitality recessed applications

- Vented enclosure keeps set top box and associated cables concealed, organized and secured
- Mounts to dual metal studs, wood or concrete



DesignerSeries™
Universal Ultra Slim
Articulating Wall Mount

DesignerSeries™
Universal Ultra Slim
Articulating Wall Mount

SMARTMOUNT.
Pivoting Wall Mount

SMARTMOUNT.
Articulating Wall Mount

os**h**pd
OPM-2697-10

os**h**pd
OPM-0212-13

SUA747PU	SUA761PU	SP740P	SA740P
Display Size 32" to 50" Ultra-thin TVs less than 3" (76mm) deep	Display Size 37" to 65" Ultra-thin TVs less than 3" (76mm) deep	Display Size 22" to 40"	Display Size 22" to 40"
Max Load 60lb (27kg)	Max Load 80lb (36kg)	Max Load 80lb (36kg)	Max Load 80lb (36kg)
Mounting Pattern 200 x 100 to 400 x 400mm	Mounting Pattern 200 x 100 to 600 x 400mm	VESA® Pattern 100 x 100, 200 x 100 and 200 x 200mm	VESA® Pattern 100 x 100, 200 x 100 and 200 x 200mm

- One-Touch™ tilt offers +15°/-5° of viewing angle adjustment
- Up to ±0.5" (13mm) of vertical adjustment for post-installation leveling and height adjustment fine-tuning
- Internal cable management provides clean, professional installation finish

- One-Touch™ tilt offers +15°/-5° of viewing angle adjustment
- Up to ±0.5" (13mm) of vertical adjustment for post-installation leveling and height adjustment fine-tuning
- Internal cable management provides clean, professional installation finish



Desktop Swivel Mounts & Security Solutions

Peerless-AV® Desktop Swivel Mounts offer a secure, functional and sleek desktop surface mount for hospitality applications. These mounts seamlessly connect to a variety of flat panel displays, with easy access to cable input connections and provide discreet security that doesn't get in the way of viewing enjoyment.



Accessories page 15



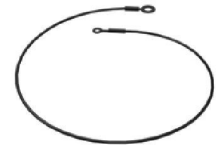
Desktop Swivel Mount



Desktop Swivel Mount



Universal Desktop Swivel Mount



Display Base Lock-down Security Kit

HP432-002	HP447	HP455	HLC-KIT(-Q10)
Display Size 26" to 37"	Display Size 32" to 47"	Display Size 32" to 55"	
Max Load 80lb (36.4kg)	Max Load 75lb (34.1kg)	Max Load 75lb (34.1kg)	Max Load 100lb (45.3kg)
VESA® Pattern 100 x 100, 200 x 100 or 200 x 200mm	VESA® Pattern 200 x 100, 200 x 200mm	VESA® Pattern 200 x 200, 200 x 400, 300 x 300 and 400 x 400mm	VESA® Pattern Compliant with all VESA® mounting hole patterns

- Base plate bolts down for safety and security

- Built-in swivel up to 360° allows for optimum viewing angle

- Optional slope nuts included for added security

- Easily installs to virtually any wood surface



Stands & Carts



When mounting to a wall is not an option or when mobility is key, Peerless-AV® flat panel stands and carts provide a complete solution. Maneuverability is made easy with swivel casters on the carts, while the stand provides versatility and security.

NEED MORE STORAGE?

The ACC-UCM Universal AV Component Mount works perfectly to hold a media player behind the TV. Check it out on page 15.

RoHS

Accessories page 15



Flat Panel Floor Stand



Flat Panel Cart
UL



Full Featured Flat Panel Cart
UL



Cart for use with the Microsoft® Surface™ Hub 55" or 84"



Flat Panel Video Conference Cart
UL

FPZ-600	SR560M	SR575M	SR598-HUB	SR555E
Display Size Up to 75"	Display Size 32" to 75"		Display Size 55" to 98"	Display Size (2) 40" to 55"
Max Load 200lb (90.7kg) per display up to four displays	Max Load 150lb (68.2kg) for the display 25lb (11.4kg) per shelf		Max Load 300lb (136.1kg) for the display	Max Load 150lb (68.2kg) 75lb (34.1kg) per display
VESA® Pattern 100, 200 x 100 and 200 x 200mm Supports additional VESA® patterns with PLP display adaptor, sold separately	VESA® Pattern 200 x 200 to 600 x 400mm		VESA® Pattern 200 x 200 up to 1200 x 600mm	VESA® Pattern up to 400 x 400mm for each display

- Fits single or back-to-back displays (up to four with additional dual-display cartridge)

- The pre-assembled base and UL® certification ensure quick assembly while providing a ridged, but attractive, structure that fits into any décor

- The cart sits at Microsoft's recommended viewing height, and offers vertical adjustment so the display can be positioned at any height up to 60" from the floor

- (2) 2RU rack mount locations provide ample space for rack mountable components



Kiosk Solutions

Choose from a versatile array of sleek, slim and attractive kiosk enclosures for virtually any application. Our kiosks are customizable in every way—from the choice of technology to custom paint and vinyl wraps. If you can envision it, we can make it happen. Visit our online KioskBuilder™ to create a custom kiosk that fits your technology needs - kiosks.peerless-av.com



KIPIC2555

All-in-One Kiosk Powered by BrightSign®

Comes fully integrated with 55" display, 10-point IR touch overlay, & a BrightSign® XT1144 Expanded I/O Player



KIPC2555 shown in silver

Floor Standing Portrait Kiosks

For 40"-65" displays



KILH542 shown in black



KIL548 shown in black

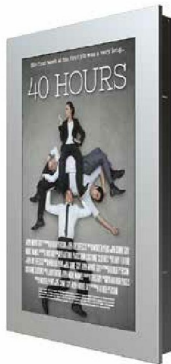
Floor Standing Landscape Kiosks

For 40"-55" displays

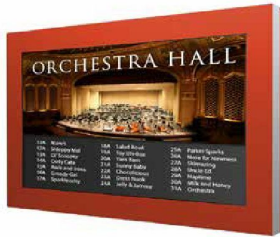
In addition, count on Peerless-AV® enclosures for:

- Fast screen set-up
- Range of sizes—from tablet to 90" screens*
- Easy accessibility to components for maintenance and upgrades

* Some sizes may require custom design



KIP746-S shown in silver



KIL655 shown with custom color

**In-Wall & Wall Kiosks,
Portrait & Landscape models**

For 40"-55" displays



KIP586-4LG shown in black

Ultra Stretch Portrait Kiosk

For the LG 86BH5C Ultra Stretch Signage Display(s)



**Don't see a design or size
you're looking for?**

Contact our **dedicated Kiosk design team** to develop a solution that perfectly matches your vision at 800-865-2112 or info@peerless-av.com.

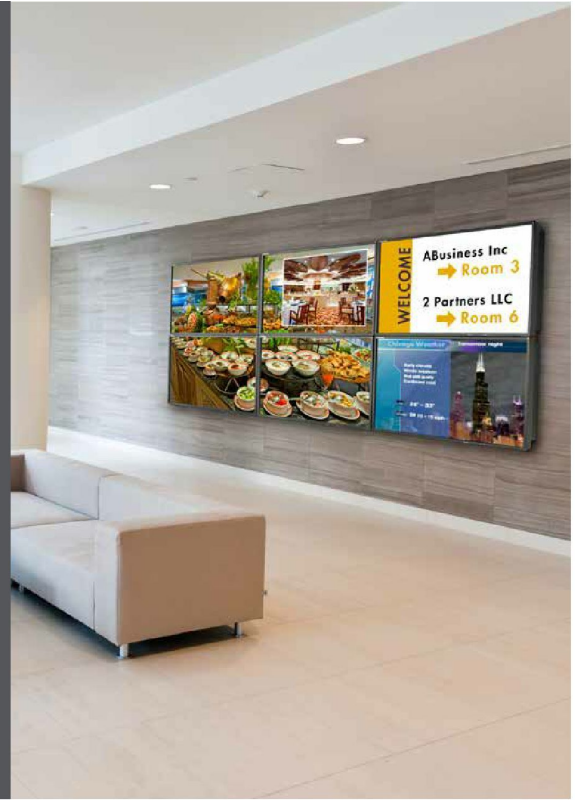
- Optional fan-cooling systems to extend component life
- Additional add-ons include speakers, amplifier, interactive technology, screen protection, antimicrobial paint finishes, power management, and more
- Security features such as key-locked or combination locked doors



SMARTMOUNT® Full Service Video Wall Mounts

The SmartMount® video wall series offers a comprehensive line of mounts ideal for any environment. Limitless configurations are possible with the ability to accommodate displays in both landscape and portrait orientations. With features such as tool-less micro-adjustment and reusable custom wall spacers, we give you the tools you need to create the perfect video wall.

RoHS



Supreme Full Service Video Wall Mount



Full Service Video Wall Mount with Quick Release

DS-VW775	DS-VW795-QR
Display Size 46" to 60"	Display Size 65" to 95"
Max Load 125lb (56.8kg)	Max Load 225lb (102kg)
VESA® Pattern 200 x 200 up to 600 x 400mm	VESA® Pattern 200 x 200 up to 600 x 600mm

- Tool-less micro-adjustment with 1.5" of travel on each of the x, y and z axis
- Modular mount for unlimited video wall display configurations

- Quick release pop-out mechanism provides convenient display access in recessed applications
- Tool-less micro-adjustments at 8 points allows the mount to overcome uneven walls and creates a seamless video wall display

SMARTMOUNT.

Video Wall Mounting Systems for Direct View LED Displays

The SmartMount® Video Wall Mounting Systems offer slim, space-saving, and aesthetically appealing designs that can be adapted to support various LED display sizes and brands. With features such as cable management, easy-hang hardware, and a pop-out mechanism, installation and maintenance are simple so you can focus on what matters – Creating the perfect video wall to effortlessly communicate your digital message.



Flat LED Video Wall Mount

DS-LEDF

KITTED SOLUTION

Designed and built to your video wall specifications

ADAPTORS ADJUST ON THE X, Y AND Z AXIS

Allows the installer to overcome uneven walls while simplifying the display and adaptor alignment

SCALABLE DESIGN

Engineered to any configuration for various brand and display sizes



Visit peerless-av.com/SEAMLESS to get your LED project started!

Accessories



ACC-UCM

Universal AV Component Mount
Can be mounted to various wall surfaces, Peerless-AV® products, or directly to the TV's VESA® pattern



ACC320

Electrical Outlet Strip with Cord Wrap



ACC-HPF650

In-furniture accessory bracket



IBA-3AC(-W)

Recessed Cable Management and Power Storage Accessory Box*

*Works with most displays 42" and larger without being visible from behind when used with the HPF650. Verify dimensions for confirmation of compatibility.



IBA2(-W)

In-Wall Accessories Box



IBA2AC(-W)

In-Wall Accessories Box with 125V Duplex Power Receptacle



PLP-UNM

Universal Adaptor Bracket for 22" to 50" Displays



PLP-UNL

Universal Adaptor Bracket for 32" to 90" Displays



MIS773

Laptop Stand



MIS779

Keyboard Stand

Visit peerless-av.com for a complete line of accessories.





For over 75 years, passion and innovation continue to drive Peerless-AV® forward.

We proudly design and manufacture the highest quality products, ranging from outdoor displays to complete kiosk solutions, digital signage mounts to wireless systems. Whether a full-scale global deployment or custom project, Peerless-AV develops meaningful relationships and delivers world-class service. In partnership with Peerless-AV, you are trusting an award-winning team of experts who will support your business every step of the way.

For more information, visit peerless-av.com.



 peerless-av.com
 800-865-2112