

peerless-AV[®]

Home
Installation
Collection





Home Installation Collection

Peerless-AV® has the products and expertise you need to get the job done. From outdoor TVs to projector and wall mounts, we have a solution for every room in the house.

- Take outdoor entertainment to the next level with our **Outdoor AV Solutions** that are all-season and maintenance-free.
- **Preconfigured Racks** and accessories are designed to help manage components, while giving an organized, polished look to any AV installation.
- **Wireless Solutions** from Peerless-AV give you reliable, best-in-class performance with straightforward operation of content delivery.
- Whether your TV mounting needs require a wall mount, projector mount, or cart, Peerless-AV offers a multitude of **Mounting Solutions**.



Outdoor TVs



Wireless



Racks



TV Wall Mounts



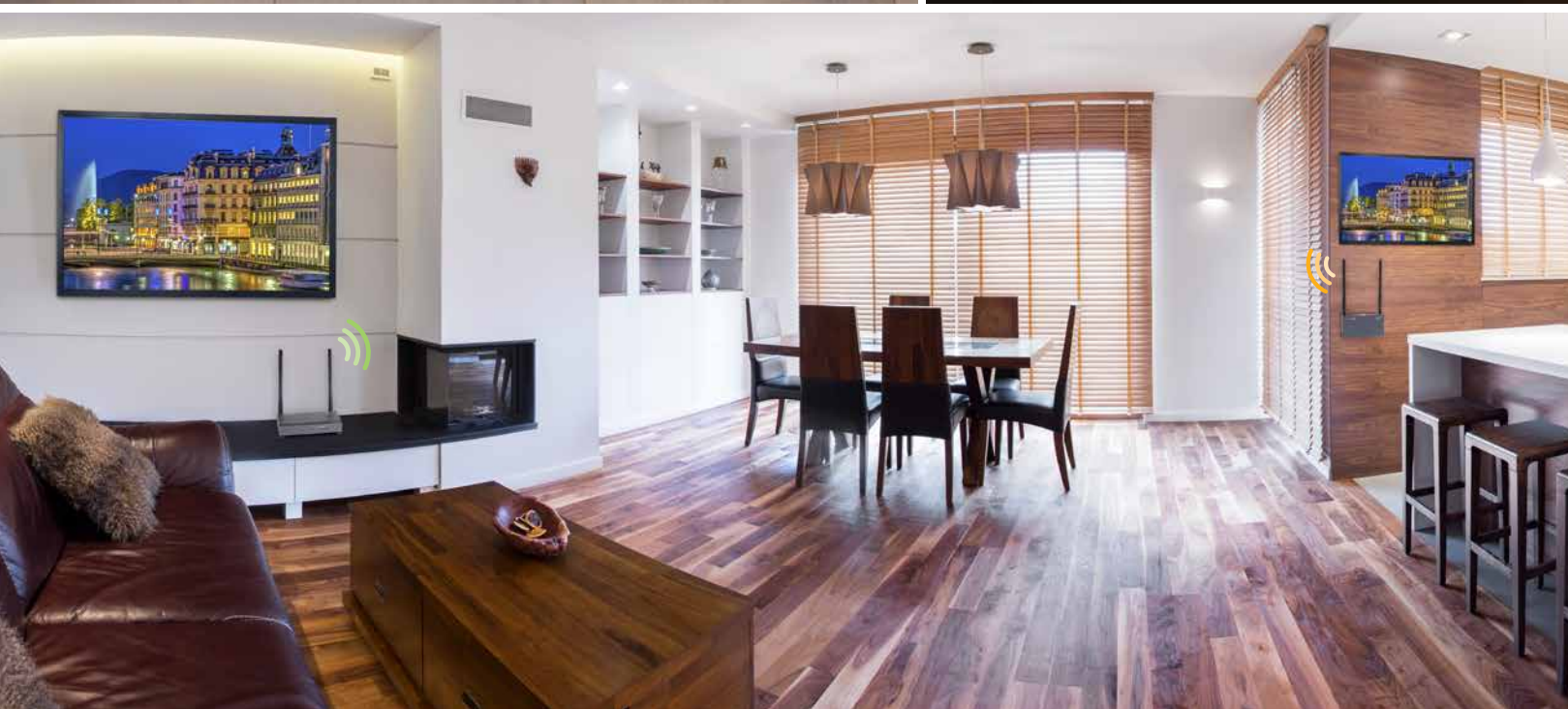
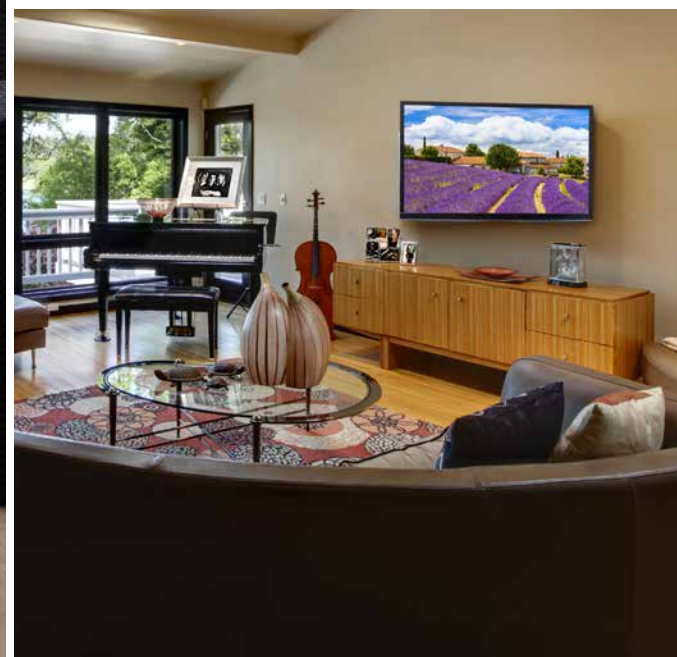
Projector Mounts



Carts



AV Wall Shelves





Outdoor AV Solutions

Peerless-AV® provides a complete line of outdoor AV solutions, from corrosion resistant mounts to outdoor TVs. The UltraView™ UHD Outdoor TV is a weather-resistant, maintenance-free solution for your ideal outdoor entertainment experience. With an operating temperature range of -22°F to 122°F, it's the perfect addition to a patio, pool deck, or outdoor living area. Add the Xtreme™ Outdoor Soundbar for the full outdoor audio experience, or use it with your mobile device to stream live audio using the built in Bluetooth® connectivity.



Visit ultraview.peerless-av.com to learn more.



UltraView™ UHD Outdoor TVs

4K ULTRA HD™    

UV492	UV552	UV652
TV Size 49" Diagonal	TV Size 55" Diagonal	TV Size 65" Diagonal
Resolution 3840 x 2160		

Operating Temperature
-22°F to 122°F

- High TNi panel allows for direct sunlight readability without the risk of isotropic blackout
- IPS panel provides exceptional picture quality from any angle
- No filters, vents or exhaust fans means no need to service the TV
- Input compartment provides safe storage and DC power for small video equipment



Xtreme™ Outdoor Soundbar



SPK-080

TV Size
42" and above

Amplifier Ratings
200 Watts Total System Power

Environmental Rating
IP65



Outdoor Universal Tilt Wall Mount



EPT650

TV Size
32" to 75"

Max Load
175lb (79kg)

Mounting Pattern
732 x 406mm
(28.84"W x 15.94"H)



Outdoor Articulating Wall Mount



ESA763PU

TV Size
32" to 80"

Max Load
200lb (91kg)

Mounting Pattern
730 x 405mm
(28.74"W x 15.94"H)

- Digital optical audio input and standard analog audio input allow for use with all leading outdoor TVs

- Made of corrosion resistant materials for weather resistance

- Integrated cable management keeps cables out of sight for a clean installation

- Wood, concrete and cinder block mounting hardware included



Wireless Solutions

When running cables is not an option, the PeerAir™ and PeerAir™ Pro offer wireless HD content streaming. The systems offer plug-and-play setup and the ability to stream full HD 1080p content. With a small footprint, these wireless systems can easily be incorporated into any application.



peerAir™ | PRO

Wireless AV Multi-Display System



HDS300

Wireless Distance
210ft (64m)

Signal Support
1080p (60Hz) (24/30 fps)

Wireless Protocol 802.11n	Compression Standard h.264 Encoding	Content Protection HDCP Compliant
------------------------------	--	--------------------------------------

Multicast up to six PeerAir™ Pro Wireless Receivers*



peerAir™

Wireless HD Multimedia System



HDS-WHDI100

Wireless Distance
100ft (30m)

Signal Support
1080p (60Hz)(24/30 fps)

Wireless Protocol 802.11n	Supported IR Frequencies 20-60kHz	Content Protection HDCP Compliant
------------------------------	--------------------------------------	--------------------------------------

- Transmits through walls, floors, and ceilings for multi-room streaming capability

- Plug-and-play setup requires no software or driver installation

- HDMI pass-through allows hard-wired connection to a second HDTV for maximum flexibility

- Built-in IR repeater system allows remote control of AV devices when stored out of sight



Enclosed Racks

The pre-configured racks and accessories are designed to help manage components, while giving an organized, polished look to any AV installation. The fully assembled racks eliminate time-consuming installation costs.



Enclosed Racks

AV18	AV27	AV42
18 Space Rack	27 Space Rack	42 Space Rack
Max Load 500lb (226.8kg) 50lb (22.7kg) per 2U shelf	Max Load 750lb (340.2kg) 50lb (22.7kg) per 2U shelf	Max Load 1100lb (500kg) 50lb (22.7kg) per 2U shelf 100lb (45.4kg) per 5U shelf

- Top and bottom ventilation with pre-installed top cooling fans keeps components from overheating
- Caster base makes the rack easy to position and move, even with gear
- Fully assembled racks eliminate time-consuming installation costs
- One complete SKU fulfills all your rack needs, making ordering simple



DesignerSeries™ Wall Mounts

The DesignerSeries™ line of wall mounts feature sleek and innovative designs for a clean installation. A visibly smooth transition from the wall to the TV with razor style arms, these mounts are designed exclusively for ultra-thin TVs. Additional features include vertical adjustment, internal cable management, and a glossy black finish.



Designer Series™
Universal Ultra Slim
Flat Wall Mount



SUF640P

TV Size
37" to 50" Ultra-thin TVs
less than 3" (76mm) deep

Max Load
150lb (68kg)

Mounting Pattern
450 x 402mm
(17.73"W x 15.82"H)

Designer Series™
Universal Ultra Slim
Flat Wall Mount



SUF650P

TV Size
37" to 75" Ultra-thin TVs
less than 3" (76mm) deep

Max Load
150lb (68kg)

Mounting Pattern
742 x 449mm
(29.23"W x 17.67"H)

Designer Series™
Universal Ultra Slim
Flat Wall Mount



SUF660P

TV Size
40" to 80" Ultra-thin TVs
less than 3" (76mm) deep

Max Load
150lb (68kg)

Mounting Pattern
825 x 449mm
(32.48"W x 17.67"H)

Designer Series™
Universal Ultra Slim
Tilt Wall Mount



SUT646P

TV Size
32" to 50"

Max Load
70lb (32kg)

Mounting Pattern
485 x 307-411mm
(19.10"W x 12.08"-16.17"H)

Designer Series™
Universal Ultra Slim
Tilt Wall Mount



SUT670P

TV Size
32" to 80"

Max Load
125lb (57kg)

Mounting Pattern
685 x 307-411mm
(26.97"W x 12.08"-16.17"H)

- Ultra slim design holds TVs only 0.33" (8mm) from the wall

- Lateral shift adjustment for centering the TV on the wall

- Easy three step installation process

- ±10° of One-Touch™ tilt for smooth viewing angle adjustment

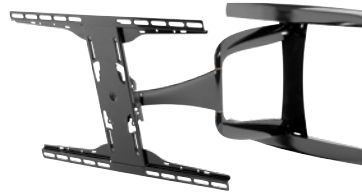
- Holds TVs only 1.00" (25mm) from the wall, creating a low-profile finish perfect for today's ultra-thin TVs



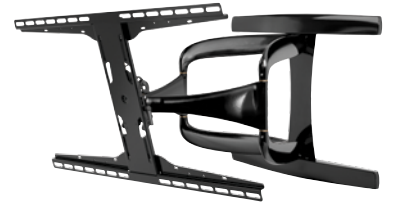
Designer Series™
Ultra Slim
Articulating Wall Mount



Designer Series™
Universal Ultra Slim
Articulating Wall Mount



Designer Series™
Universal Ultra Slim
Articulating Wall Mount



Designer Series™
Universal Ultra Slim
Articulating Wall Mount

SUA740P	SUA747PU	SUA761PU	SUA771PU
<p>TV Size 32" to 40" Ultra-thin TVs</p>	<p>TV Size 32" to 50" Ultra-thin TVs less than 3" (76mm) deep</p>	<p>TV Size 37" to 65" Ultra-thin TVs less than 3" (76mm) deep</p>	<p>TV Size 42" to 90" Ultra-thin TVs less than 3" (76mm) deep</p>
<p>Max Load 60lb (27kg)</p>	<p>Max Load 60lb (27kg)</p>	<p>Max Load 80lb (36kg)</p>	<p>Max Load 125lb (57kg)</p>
<p>VESA® Pattern 200 x 100 and 200 x 200mm</p>	<p>Mounting Pattern 400 x 400mm (15.75"W x 15.75"H)</p>	<p>Mounting Pattern 600 x 400mm (23.62"W x 15.75"H)</p>	<p>Mounting Pattern 800 x 400mm (31.50"W x 15.75"H)</p>

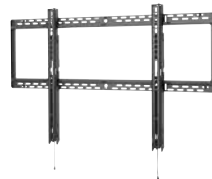
- Up to $\pm 90^\circ$ of side-to-side swivel
- One-Touch™ tilt mechanism allows adjustment of $+15/-5^\circ$ without the use of tools
- Up to $\pm 0.5"$ (13mm) of vertical adjustment for post-installation leveling and height adjustment fine-tuning
- Added $\pm 5^\circ$ of roll for post-installation display leveling without the use of tools
- Internal cable management provides clean, professional installation finish



SMARTMOUNT®

Flat & Tilt Wall Mounts

With Peerless-AV's line of SmartMount® flat and tilt wall mounts, you'll get versatile and easy to install solutions. The flat wall mounts offer a low-profile design that complement today's ultra slim TVs, while the tilt wall mounts are designed to create the optimal viewing angle.



SMARTMOUNT:
Flat Wall Mount

SMARTMOUNT:
Flat Wall Mount

SMARTMOUNT:
Universal
Flat Wall Mount

SMARTMOUNT:
Universal
Flat Wall Mount

SMARTMOUNT:
Universal
Flat Wall Mount

SMARTMOUNT:
Universal
Flat Wall Mount

SMARTMOUNT:
Universal
Flat Wall Mount



SF630(P)

SF632(P)

SF640(P)

SF650(P)

SF660(P)

SF670(P)

SF680(P)

TV Size
10" to 29"

TV Size
22" to 40"

TV Size
32" to 50"

TV Size
39" to 75"

TV Size
39" to 80"

TV Size
46" to 90"

TV Size
60" to 98"

Max Load
80lb (36kg)

Max Load
115lb (52kg)

Max Load
150lb (68kg)

Max Load
175lb (79kg)

Max Load
200lb (91kg)

Max Load
250lb (113kg)

Max Load
350lb (158kg)

VESA® Pattern
75 and 100mm

VESA® Pattern
75, 100, 200 x 100
and 200 x 200mm

Mounting Pattern
450 x 405mm
(17.72"W x 15.95"H)

Mounting Pattern
742 x 405mm
(29.21"W x 15.95"H)

Mounting Pattern
824 x 405mm
(32.44"W x 15.95"H)

Mounting Pattern
895 x 450mm
(35.25"W x 17.72"H)

Mounting Pattern
1100 x 650mm
(43.29"W x 25.59"H)

- Low-profile design holds TV 0.96" (24mm) away from the wall with SF630 and 1.02" (25mm) with SF632

- Low-profile design holds TV only 1.20" (30mm) from the wall

- Up to 0.25" (6mm) of vertical adjustment on each universal TV adaptor bracket for post-installation leveling and height adjustment fine-tuning

- Lateral display adjustment and 1" of post-installation vertical adjustment

- Adaptor rail latching feature securely locks the display in place with an audible click



SMARTMOUNT.
Tilt Wall Mount

SMARTMOUNT.
Tilt Wall Mount

SMARTMOUNT.
Universal
Tilt Wall Mount

SMARTMOUNT.
Universal
Tilt Wall Mount

SMARTMOUNT.
Universal
Tilt Wall Mount

SMARTMOUNT.
Universal
Tilt Wall Mount

SMARTMOUNT.
Universal
Tilt Wall Mount



ST630(P)

ST632(P)

ST640(P)

ST650(P)

ST660(P)

ST670(P)

ST680(P)

TV Size
10" to 29"

TV Size
22" to 40"

TV Size
32" to 50"

TV Size
39" to 75"

TV Size
39" to 80"

TV Size
46" to 90"

TV Size
60" to 98"

Max Load
80lb (36kg)

Max Load
115lb (52kg)

Max Load
150lb (68kg)

Max Load
175lb (79kg)

Max Load
200lb (91kg)

Max Load
250lb (113kg)

Max Load
350lb (158kg)

VESA® Pattern
75 and 100mm

VESA® Pattern
75, 100, 200 x 100
and 200 x 200mm

Mounting Pattern
458 x 405mm
(18.02"W x 15.95"H)

Mounting Pattern
742 x 405mm
(29.21"W x 15.95"H)

Mounting Pattern
824 x 405mm
(32.44"W x 15.95"H)

Mounting Pattern
895 x 450mm
(35.25"W x 17.72"H)

Mounting Pattern
1061 x 650mm
(41.76"W x 25.59"H)

- +15°/-5° tilt adjustment without the use of tools

- Universal tilt adaptors allow for +15°/-5° tilt adjustment in one easy motion
- Up to 0.25" (6mm) of vertical adjustment on each universal TV adaptor bracket for post-installation leveling and height adjustment fine-tuning

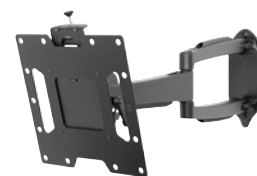
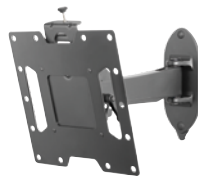
- Adjustable up to 15° of forward tilt and -5° of backward tilt with optional IncreLok™ feature
- Adaptor rail latching feature securely locks the display in place with an audible click



SMARTMOUNT®

Articulating Wall Mounts

Peerless-AV® SmartMount® pivoting and articulating wall mounts are versatile and sleek. These mounts allow for perfect viewing in any part of the room with $\pm 90^\circ$ of pivot and $\pm 0.5"$ vertical adjustment for post-installation leveling. Ranging from 10" to 90" TVs, the SmartMount line provides everything that is needed for the perfect installation.



SMARTMOUNT.
Pivoting Wall Mount

SMARTMOUNT.
Articulating Wall Mount

SMARTMOUNT.
Pivoting Wall Mount

SMARTMOUNT.
Articulating Wall Mount

SMARTMOUNT.
Pivoting Wall Mount



SP730P

SA730P

SP740P

SA740P

SP746PU

TV Size
10" to 29"

TV Size
10" to 29"

TV Size
22" to 40"

TV Size
22" to 40"

TV Size
32" to 50"

Max Load
25lb (11kg)

Max Load
25lb (11kg)

Max Load
80lb (36kg)

Max Load
80lb (36kg)

Max Load
80lb (36kg)

VESA® Pattern
75 x 100mm

VESA® Pattern
75 x 100mm

VESA® Pattern
100 x 100, 200 x 100
and 200 x 200mm

VESA® Pattern
100 x 100, 200 x 100
and 200 x 200mm

Mounting Pattern
400 x 400mm
(15.75"W x 15.75"H)

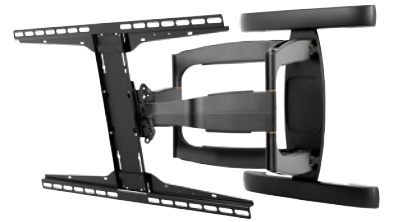
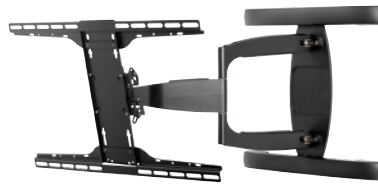
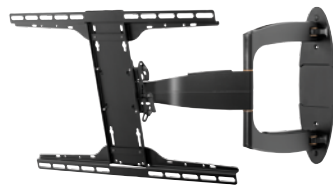
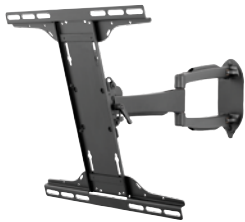
- $\pm 90^\circ$ of pivot allows for perfect TV positioning

- One-Touch™ tilt offers $\pm 35^\circ$ of viewing angle adjustment

- $\pm 90^\circ$ of pivot allows for perfect TV positioning

- One-Touch™ tilt offers $+15^\circ/-5^\circ$ of viewing angle adjustment

- Up to $\pm 0.5"$ (13mm) of vertical adjustment for post-installation leveling and height adjustment fine-tuning



SMARTMOUNT.

Articulating Wall Mount



SA746PU

TV Size
32" to 50"

Max Load
80lb (36kg)

Mounting Pattern
400 x 400mm
(15.75"W x 15.75"H)

SMARTMOUNT.

Articulating Wall Arm

SA752PU

TV Size
37" to 55"

Max Load
90lb (42kg)

Mounting Pattern
600 x 400mm
(23.62"W x 15.75"H)

SMARTMOUNT.

Articulating Wall Arm

SA761PU

TV Size
39" to 75"

Max Load
125lb (57kg)

Mounting Pattern
600 x 400mm
(23.62"W x 15.75"H)

SMARTMOUNT.

Articulating Wall Arm

SA771PU

TV Size
46" to 90"

Max Load
150lb (68kg)

Mounting Pattern
800 x 400mm
(31.50"W x 15.75"H)

- Internal cable management provides clean, professional installation finish

- ±90° of pivot allows for perfect TV positioning

- One-Touch™ tilt mechanism allows adjustment of +15/-5° without the use of tools

- ±0.5" (13mm) of vertical adjustment for post-installation height adjustment fine-tuning

- Internal cable management provides ample area to run cables to complete a clean, professional installation



Projector Mount & Flat Panel Cart

Peerless-AV® Projector Mounts are easy to install and provide the flexibility needed to create the ultimate custom home theater.

When mounting to a wall is not an option or you are simply looking for a mobile solution, the SmartMount® Flat Panel Cart provides a safe and secure platform for your TV.



SMARTMOUNT.
PRG Precision Gear Projector Mount

PRG-UNV(W)		
Pitch ±20°	Swivel (during installation) 360° (±15° when flush mounted)	Roll ±10°
Max Load 50lb (22kg)		

Mounting Pattern
Upt to 17.63" (448mm)



SMARTMOUNT.
Flat Panel Cart

SR560M
TV Size 32" to 75"
Max Load 150lb (68.2kg) display 10lb (4.55kg) shelf

VESA® Pattern
200 x200 up to 600 x 400mm

- Simple flush installation enables fast and easy flush mounting installation with horizontal wrench access slots
- Achieve pin-point image alignment by simply turning the adjustment knobs by hand or with a Phillips screwdriver
- Includes all necessary installation hardware
- Easily converts from a cart to a stand for the ultimate flexibility



AV Storage Solutions

Peerless-AV's versatile AV Wall Shelves and Universal Component Mount provide simple and tasteful solutions for storing home entertainment components needed for a TV. The wall shelves give ample storage space under a mounted TV, while the component mount accessory offers the ability to hide small AV components on the back of a TV. With easy assembly and installation, stylish home entertainment is right around the corner.



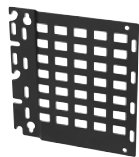
RoHS
COMPLIANT



Single & Dual AV Wall Shelves

ESHV10	ESHV20	ESHV30
Shelf Single	Shelf Single with glass	Shelf Double with glass

Max Load
30lb (13.6kg) per shelf



Universal AV
Component Mount

ACC-UCM
For Streaming Media Players and other AV Components

Max Load
5lb (2.27kg)

Accessories



IBA2(-W)
In-Wall Accessories Box



IBA2AC(-W)
In-Wall Accessories Box



IBA3(-W)
In-Wall Accessories Box
with 125V Duplex Power Receptacle



IBA3AC(-W)
In-Wall Accessories Box
with 125V Duplex Power Receptacle

- Easily adjust the height of the component shelf after installation without the use of tools

- Can be mounted to various wall surfaces, Peerless-AV® products, or directly to the TV's VESA® pattern



Visit peerless-av.com for a complete line of accessories for Home Installation Collection



For over 75 years, passion and innovation continue to drive Peerless-AV® forward.

We proudly design and manufacture the highest quality products, ranging from outdoor displays to complete kiosk solutions, digital signage mounts to wireless systems. Whether a full-scale global deployment or custom project, Peerless-AV develops meaningful relationships and delivers world-class service. In partnership with Peerless-AV, you are trusting an award-winning team of experts who will support your business every step of the way.

For more information, visit peerless-av.com.

 peerless-av.com
 800-865-2112