



MASK PATTERN

This is one of the few times when quantity is more important than quality. Our Healthcare Professionals need as many masks as possible as soon possible. No one is going to appreciate your perfectly-straight stitches or your perfectly-even pleats. They are going to appreciate having a life-saving device.

Timesaving Tip: If you are planning to make a lot of masks, you might find it easier to follow step one with a group of masks. Then go to step 2 with all the masks.

1. Wash your fabric in hot water and dry it on high. (If you have gotten fabric from Clergy Image, it has already been washed.)

Cut an 11" x 16" piece of tightly woven, 100% cotton fabric. If you are planning to make a lot, you can stack the fabric and cut with a rotary cutter or snip the fabric and tear it instead of cutting.

Fold it right sides together. It will now be 11" x 8".

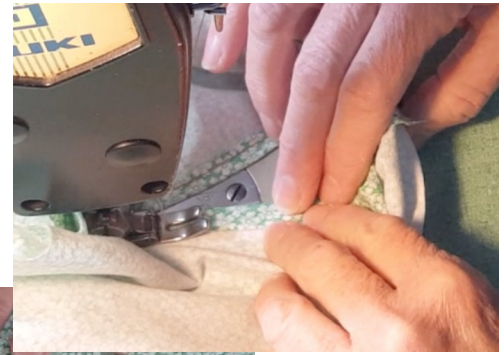
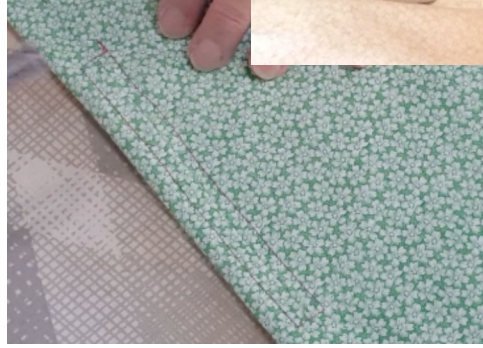


2. On the 11" side opposite the fold, measure and mark $2\frac{3}{4}$ " from each edge toward the center. Sew from edge to the mark - back stitch. Move needle to the next mark, backstitch and sew to the edge. This will leave a 5" opening in the center.



3. You now have a tube. Fold back the edges of the unsewn area, and press the seam open.

Stitch $\frac{1}{8}$ " - $\frac{1}{4}$ " around the opening, making sure to catch the raw edges in the seam.



4. Turn right side out with the opening facing you. Fold so that the opening is about $\frac{5}{8}$ " from the top edge. Press the entire piece to create a sharp crease at the top and bottom.



5. With the pocket opening facing up, create 3 pleats. Pinch the fabric about $1\frac{1}{4}$ " from the bottom, fold it up making a $\frac{1}{2}$ " overlap. Pick up the fabric about 1" above your pleat and fold it up to create another $\frac{1}{2}$ " overlap. Repeat a third time. Do not worry about where the pleats fall in relation to the pocket opening. Adjust it by eye, until it looks even. (Remember, we are not looking for perfection.)

The mask should measure about $3\frac{1}{4}$ " - $3\frac{1}{2}$ " from top to bottom.

Press the pleats. Staystitch (baste) the pleats.

6. Find the center of your mask above the pocket. Measure and mark about $2\frac{1}{8}$ " to the left of center and $2\frac{1}{8}$ " to the right of center. Starting at your first mark, sew a vertical line about $\frac{1}{4}$ ", then pivot and sew across the top of the mask about $\frac{1}{4}$ " from the edge to make a casing for the twist tie. Stop at your second mark. Backstitch.



This part feels tricky at first, but you'll get comfortable with it very quickly. You can also pin the edges of the pleats until you get the hang of it.



7. From the side of the mask, slide the twist tie into the casing. Stitch the open end of the casing closed to keep the twist tie in place.



8. Making sure the pocket opening is facing up, fold the side edges over twice. Your first fold is about ¼" and the second fold is about ½". This will form about a ½" wide casing for your elastic. Stitch as close to the casing edge as you can. Repeat on the other side.



9. Attach the safety pin to one end of the elastic. (You can also use a yarn needle.) From the bottom of either side of the mask, push the safety pin through the casing. Unpin the safety pin, attach it to the other end of the elastic and starting from the bottom on the other side, push the safety pin through the casing.



10. Tie the ends of the elastic together by wrapping the elastic around your finger and slipping the ends through the hole your finger created. Pull it tight.

ALL DONE!

For video instructions:

On facebook: <https://tinyurl.com/qvt35s4>

On youtube: <https://tinyurl.com/vj35cf9>



When you have batch ready, email us for pickup. If you are not in the Vacaville/Fairfield area, you can find donation suggestions at www.findthemasks.com/#sites. Or donate to essential workers, family friends. Post pics of your donations using #clergyimage #getmeppe #millionmask #doingourpart