



MF-1089 Portable Air Compressor Owner's Manual



PLEASE READ THIS MANUAL CAREFULLY BEFORE OPERATING YOUR COMPRESSOR. SAVE THESE INSTRUCTIONS FOR FUTURE REFERENCE

BEFORE OPERATING THE UNIT, IF YOU HAVE ANY QUESTIONS, PLEASE CONTACT US

ONLY YOU CAN PREVENT INJURIES

MasterFlowAir.com

DESCRIPTION: This inflator is designed to inflate truck, car, trailer, ATV and bike tires. It will also work well for sport balls, beach toys and other inflatables. Do not use for any purpose other than inflating. If used for unintended purposes bodily harm or injury can occur. Not intended for commercial use.

SPECIFICATIONS: Voltage Requirement: DC 12V – For use with a 12-Volt DC electrical system. High altitude and certain air temperatures can negatively affect the unit's performance

Maximum Recommended operating time is 20 minutes. Follow with 40 minute cool down before continuing.



The following warnings indicate a potential hazardous situation that could result in death or serious injury.

READ ALL INSTRUCTIONS before operating product. Failure to follow all instructions below may result in electrical shock, fire and serious injury or death.

SAFETY GLASSES: Always wear ANSI Z87.1 approved safety glasses with side shields when operating unit. Compressed air and particulate matter can cause eye and soft tissue damage. Keep air stream away from skin and eyes.

RISK OF BURNS: Always wear gloves. Some exposed parts may become hot during use.

RISK TO BREATHING: This compressor is not designed for and should never be used as a source of breathable air. The air stream may contain carbon monoxide, toxic vapors or solid particles. Breathing these contaminants can cause serious injury or death.

RISK OF ELECTRICAL SHOCK: This compressor is for use in dry conditions only.

RISK OF FALLING: This compressor will produce vibrations and can "walk." Only operate dry level ground.

RISK OF FIRE: This unit will become hot during operation. Allow to cool before storing. NEVER operate the unit in an explosive atmosphere or near combustible material. An explosion or fire could result causing severe bodily harm or even death.

RISK OF BURSTING: Use only accessories rated for 120 psi. Always follow the manufacturer's recommended inflation instructions for your item.

DO NOT MODIFY: Never drill, modify or attempt to repair the unit. There are no user serviceable parts inside.

SAFE HANDLING: Never carry the unit by the hose or power cord. Wash hands after use.

PAY ATTENTION: Do not leave the unit running unattended.

SECURE THE LOCATION: Only operate this unit with the vehicle in a level, dry location, well off the roadway and safe from traffic. Be sure to stay out of the travel lane.

SECURE THE VEHICLE from moving. Always apply the parking brake and put car into "Park" position. Be aware that even on level ground as you inflate a tire you could cause the vehicle to rollaway. It is recommended that you curb and block the tires as an extra safety precaution against rollaway incidents.

FOR BEST PERFORMANCE: It is recommended that you operate this unit with your vehicle's engine running, outdoors and in a well-ventilated area. NEVER run your engine indoors, in confined spaces or in unventilated areas. Injury from carbon monoxide poisoning and death can occur.

CARBON MONOXIDE: Gas is a deadly, colorless, odorless, poisonous gas produced by gas and diesel engines which can kill you!

PROPER INFLATION: It is recommended that you always use a second pressure gauge to verify the actual pressure inside the tires. Set tires to the vehicle manufacturer's recommended tire pressure. If you are unsure, contact the manufacturer.

LEAD ACID BATTERY PRECAUTIONS AND SAFETY: Never smoke or allow a spark or flame in the vicinity of the battery or engine. Batteries generate explosive gases!

Wear complete eye protection and clothing protection when working with lead-acid batteries.

Make sure someone is within range of your voice or close enough to come to your aid when you work with or near a lead-acid battery.

Have plenty of fresh water and soap nearby for use if battery acid contacts skin, clothing, or eyes. If battery acid contacts skin or clothing, wash immediately with soap and water.

Avoid touching your eyes while working with a battery. Acid particles (corrosion) may get into your eyes! If acid enters your eye, immediately flood eye with running cold water for at least 10 minutes. Get medical attention immediately.

Remove all personal metal items such as rings, bracelets, necklaces, and watches when working with a lead-acid battery. A lead-acid battery can produce a short circuit current high enough to weld a ring (or the like) to metal, causing a severe burn.

Take care not to drop a metal tool or other metal onto the battery. Metal may cause sparking or short circuit the battery or another electrical device. Sparking may cause an explosion.

NOTICE: Notice indicates important information that if not followed, may cause damage to the equipment.

FREE FLOW OF AIR: This unit is designed to supply a continuous flow of air. Never dead end the hose or use an accessory that stops the free flow of air. Damage to the unit can occur.

SMALL ITEMS: Will inflate quickly and can easily be damaged. Pay special attention to bicycle tires. They inflate very fast and can rupture. Be prepared to stop the unit quickly when manufacturer's recommended inflation pressure is reached.

TURN OFF: All accessories and radios. Unplug any cigarette-lighter accessories such as cell phones, radar detectors, etc. As a voltage spike through the electrical system can damage these gadgets.

OPERATING TIME: For best results it is recommend that you use with an on/off cycle time of 15 minutes, rest/off for every 15 minutes of run time.

ACCESSORIES: The accessories provided with this unit are the only items for use with this tool. See Fig. 2 below.

**Sport Ball Needle: Always moisten the inflation needle before you insert it into the valve. Preferably, use some silicon oil to moisten the needle. Some people use spit...that's gross.*

**Small and Large Extension Adapter: For inflating pool toys, rafts, beach balls and other items that have manual inflation valves.*

**Air Chuck extension: For converting the EZ twist inflator end to a universal lever end. Not included with all models. Can be purchased at: MasterFlowAir.com*



Fig. 2

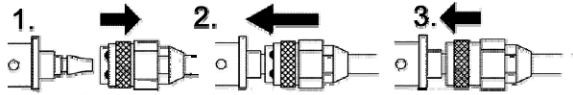
Operating Instructions:

This unit can be operated with the engine on or off. It operates like any other battery powered tool drawing power from the battery. Its performance will vary with the battery's state of charge. Actual operating time available with the engine off will vary depending on your battery's size, age, temperature and state of charge. Typically with the engine running the charging system will provide slightly more voltage to the unit thereby increasing the unit's performance.

Unpack the unit and completely un-wrap the power cord and inspect for damage. Place the unit on a dry, level surface.

Connect the air supply hose to the unit using the quick connect fitting as shown in Fig. 3 below.

1. Slide the retaining snap ring back.
2. Slide the fittings together firmly.
3. While holding fittings together firmly slide the outer ring forward to lock. See image below.



4. Install the red air filter housing as shown below. Only tighten by hand.

⚠ WARNING

This compressor connects directly to a 12-Volt power source. It is recommended that you **ALWAYS CONSULT YOUR OWNERS MANUAL FOR VEHICLE SPECIFIC INSTRUCTIONS FOR LOCATING THE CORRECT ATTACHMENT POINTS.**

Take care to avoid moving parts such as fan blades.

5. Identify the battery posts as either POSITIVE (+) or NEGATIVE (-). Positive posts or terminals are typically bigger than negative posts or terminals. Some vehicles have a positive terminal to hook the cable to that is not actually on the battery itself. Connect the positive cable to the positive terminal of the battery.
6. Attach the black / negative cable to the engine block or alternator mounting-bracket of the vehicle, as far from the battery as possible. Do not connect the negative cable to the negative terminal of the discharged battery, as this can generate a spark, which could cause the battery to explode.
7. Test the connections by switching the compressor to "on" and air will begin to flow.
8. Connect the valve adapter to the threaded section of the tire valve or one of the accessories provided in Fig 2.
9. Switch the unit "On" to begin inflating. Switching the unit off to observe the gauge will provide the most accurate pressure reading. Remove the inflator from the item when the manufacturer's recommended pressure has been achieved. Confirm the pressure is correct with a second gauge.

10. Allow the unit to cool, remove the hose and Air filter. Repack in the original box to prevent damage during storage. Store in a dry location.

Troubleshooting:

In the event the unit fails to operate:

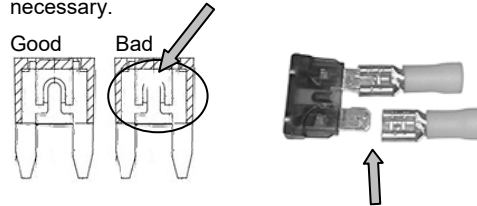
Check your connections:

Be sure the battery clips are seated securely with a firm "bite" on the battery terminal and connection point.

Inspect the fuse:

⚠ WARNING:

Disconnect the cables from battery prior to inspection and removal of the fuse. Located on the power cord you will find a black plastic fuse holder containing a ATC 20A Standard Blade Automotive type fuse. Carefully remove the cover. Remove and visually inspect the fuse. If it's blown, you'll see a melted "**bridge**" going between the two blades. See the circle in the image below. Replace if necessary.



Read this it's very important: When replacing the fuse be sure both metal blades are inserted into the metal connectors inside the fuse holder not alongside.

Air leaking from EZ twist inflator:

Inspect the end of the inflator for dirt and check your valve stem for damage. Also check that the rubber seal inside the inflator end is not damaged.



*Seen here is how the inflator end should look.
Note the rubber seal around the air slot.*

California's Proposition 65



WARNING: THIS PRODUCT CAN EXPOSE YOU TO CHEMICALS INCLUDING, DI(2-ETHYLHEXYL) PHATALATE (DEHP) WHICH IS KNOWN TO THE STATE OF CALIFORNIA TO CAUSE CANCER, BIRTH DEFECTS AND/OR OTHER REPRODUCTIVE HARM. FOR MORE INFORMATION, VISIT **WWW.P65WARNINGS.CA.GOV**

Limited Warranty:

This portable High Volume Air Compressor is warranted by Q Industries, Inc., to be free of defects in materials and workmanship for a period of 2 years from date of original purchase.

This warranty does not cover units damaged by abuse or operated above recommended pressures. There is no other warranty, hereunder, either expressed or implied. In the event of a defect, the air compressor will be repaired or replaced at our option. Please contact Q Industries, Inc. by email or telephone to obtain a return authorization number and a shipping address. Q Industries, Inc. shall not be responsible for any other incidental, contingent, or consequential charges or damages. This warranty gives you specific legal rights, and you may also have other rights which vary from State to State. Some States do not allow limitations on how long an implied warranty lasts or the above limitations or exclusions may not apply to you.

Service:

In the event you do have a problem we're here to help. We pride ourselves on customer service and will do our best to help you.

Do Not return this product to the store. Contact customer service first. They are available M-F 9 to 5 Arizona time, which is like California except in the winter when we're an hour earlier.

The fastest way is to contact us via Email. No web? Don't worry. Phone, Fax or Mail us. If you choose to call the line goes right to voice mail. Calls are returned by the next business day. Please remember to include your name, address and phone number. Believe it or not sometimes people forget.

You can find replacement hoses, parts and accessories at:

www.Masterflowair.com

E Mail: Customerservice@qindustries.net

Warranty registration: Masterflowair.com

Phone: 954-689-2263

Fax: 303-568-7700

Mailing Address: Paper mail only please.

This corporate address cannot accept packages, only paper mail.

Do not ship items for service to this address. Contact customer service for the return shipping address.

Q Industries Inc.
4727 E Bell Road
Suite 45-202
Phoenix AZ. 85032