



Image: Dave McAlone

## HISTORY

In late 1986, coal merchants Cawoods began taking delivery of a fleet of small two-axle flat wagons from the Standard Railway Wagon Company, which would eventually total some 172 vehicles. Assigned the design code PF012A and given the designation 'PFA' under British Rail's Total Operations Processing System (TOPS), these diminutive items of rolling stock have been a familiar sight on the railway network ever since.

Tasked with transporting containerised household coal and smokeless fuel, in Cawoods service the wagons could be observed right across the Midlands and North East England, as well as South Wales, transporting coal from collieries and washeries, and even imported fuel from ports on the East Coast. The primary destination for this traffic was Ellesmere Port on Merseyside, from where the coal was transhipped to sea-going vessels for export to Ireland. In the early 1990s, the transshipment operation was moved to the docks at Seaforth, just north of Liverpool.

The PFA wagons had entered service at a time when drastic changes were on the horizon for the British coal industry and by 1996 Cawoods had taken the decision to offload the fleet. However, the wagons didn't stay idle for long as they were subsequently split between British Fuels, British Gypsum and RJB.

While the RJB traffic chiefly utilised the distinctive yellow containers on former Cawoods routes, British Fuels trains carried red containers on routes from South Wales, Lincolnshire and Yorkshire to North East England and Scotland. By the end of the decade, British Fuels had been purchased by Coal Products Ltd (CPL), which resulted in some containers being painted green and

receiving that company's corporate branding. Meanwhile, British Gypsum used their PFA wagons to transport imported gypsum from docksides and disulphogypsum from power stations to the company's sites at East Leake, Mountfield and New Biggin.

In the early 2000s, Direct Rail Services Ltd (DRS) acquired a small fleet of 23 wagons to transport containers of low level radioactive waste from nuclear power stations and processing plants throughout the United Kingdom to specialist disposal facilities or to ports for transshipment. In addition to being used to convey containers, some PFA wagons are utilised as spacer wagons on these services and on nuclear flask trains.

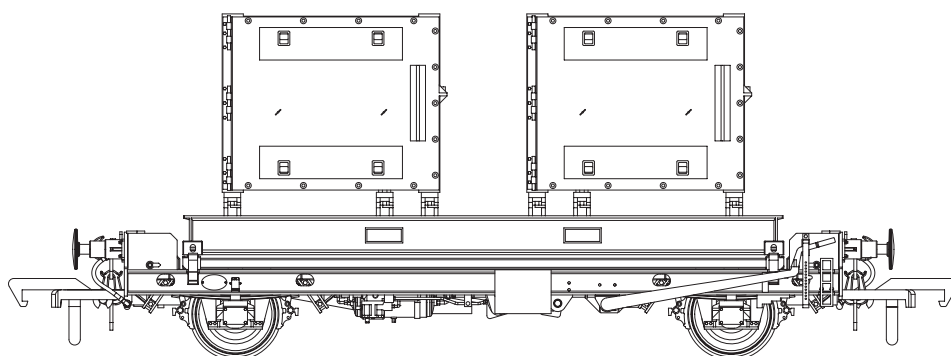
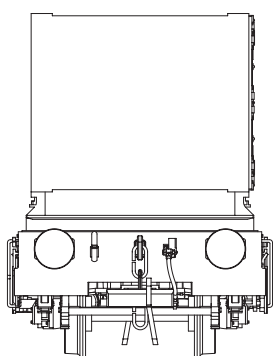
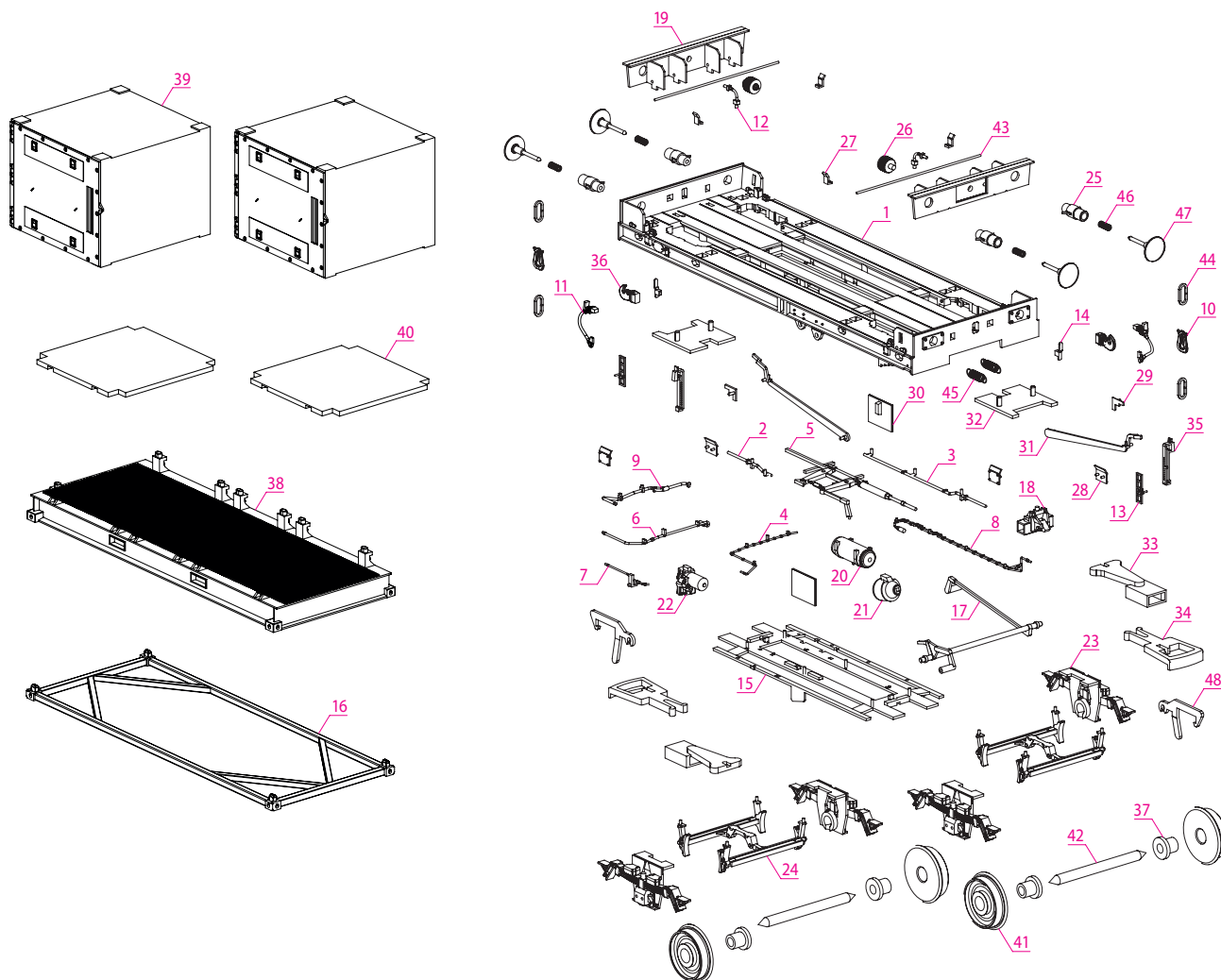
Further developments related to the transport of nuclear material have led to a number of interesting loads for the PFA fleet. In the late 1990s, Nupak reusable drum carriers were used to move ageing low level nuclear waste from Drigg to Sellafield, but later noted in workings from Berkeley between 2013 and 2017. The containers had been moved by road to the loading terminal from the experimental reactors at Winfrith and Harwell in Dorset. The Nupaks were replaced from 2017 by the Novapak Type Bs, which were larger in size and offered better protection of their hazardous contents. These are also used between Berkeley, Crewe and Sellafield. Perhaps the most curious looking of the loads is the 'Dragon' flask. Introduced in 2018, they convey spent fuel from the decommissioned Winfrith Dragon reactor to Sellafield.

Accurascale wishes to thank the following individuals for their assistance during the research phase: Paul Bartlett, Simon Bendall, Dave McAlone, Trevor Mann, David Ratcliffe, Mark Saunders and Tom Smith.

## WAGON PARTS

### NOVAPAK CONTAINERS & PFA WAGON

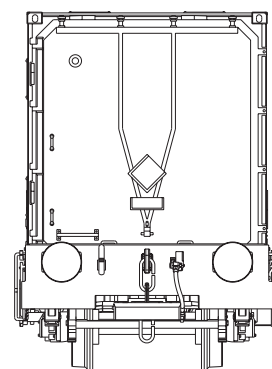
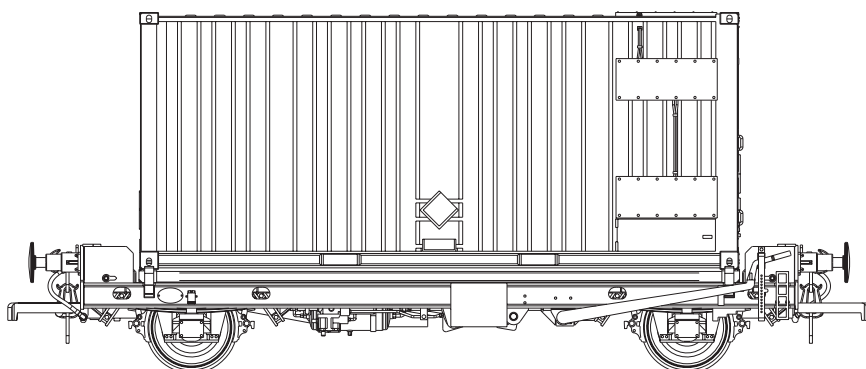
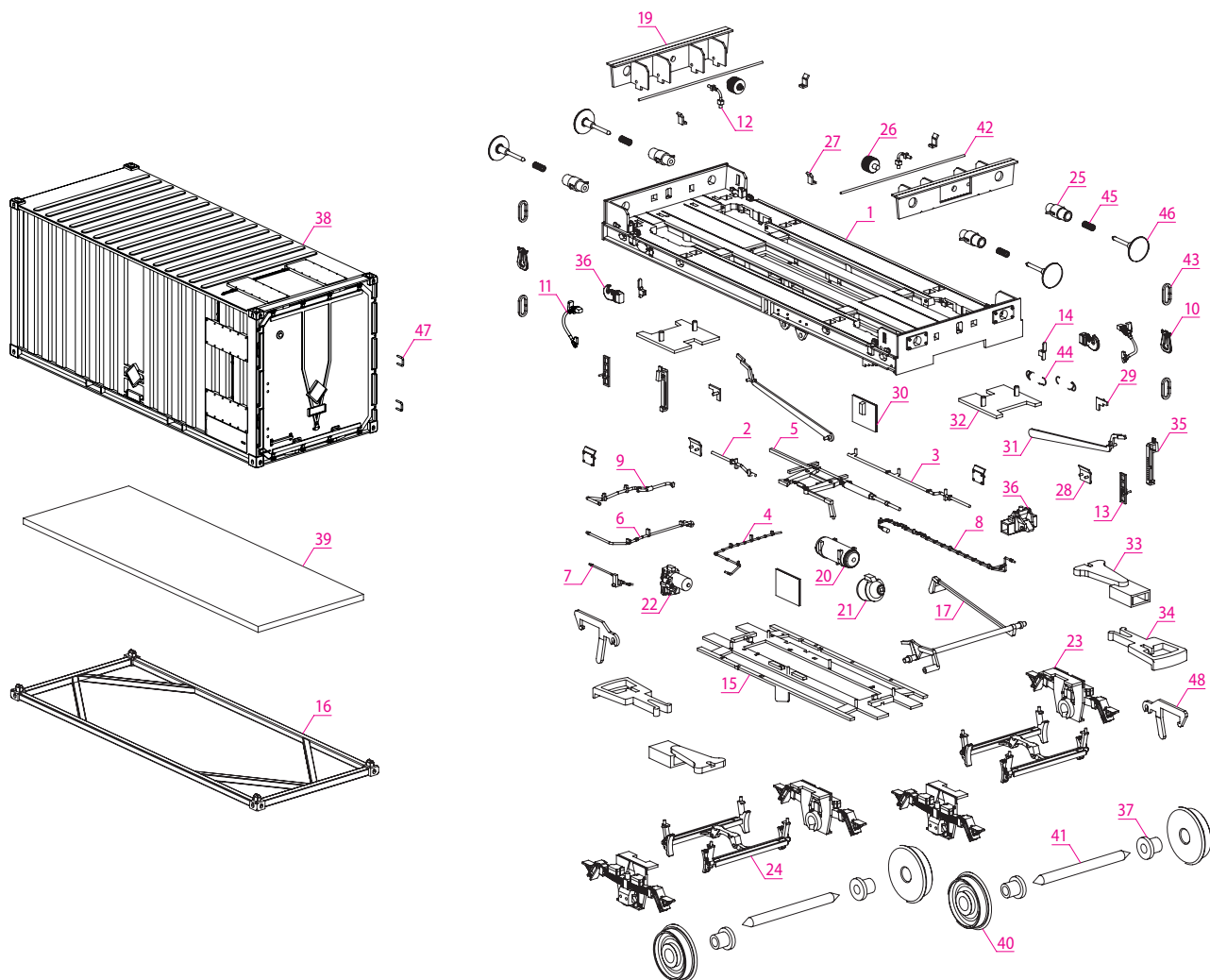
When making spare part enquiries, please quote the part number ACC-FPA-VK-XX, where XX is the part number shown on the diagram below.



## WAGON PARTS

### 2896 CONTAINER & PFA WAGON

Please quote the part number ACC-FPA-2896-XX, where XX is the part number shown on the diagram below.



---

# GENERAL INFORMATION

Accurascale works closely with leading railway experts and factories utilising cutting edge manufacturing methods to produce accurate and finely detailed ready-to-run scale models. As a company run by railway modellers for railway modellers we are committed to achieving the highest standards at all stages of production, from initial research of prototypes right through to final delivery to the customer.

Please take care when removing the product from the protective packaging and when handling as it contains delicate parts. The packaging should be retained to safely store the product when not in use. This product is not suitable for children under 14 years old.

This product has passed an extensive quality control process and is supplied with a 12-month manufacturing defect warranty from the date of purchase. Product failures due to, but not limited to abuse, accidental damage, improper maintenance, improper use and/or operation, mishandling, misuse, or modifications are not covered by the warranty.

During use this product may occasionally pick up fibres, fluff, pet hair, etc. which can become entangled around the axles. This can be removed by using a small pair of tweezers.

Avoid running the product on track laid on carpet or other unprepared surfaces. Use a soft brush to remove dust and lint from the exterior of this model. Do not use abrasive pads, detergents, soaps or solvents as they may damage paintwork and plastic surfaces. Take care not to accidentally damage fine detail parts.

For warranty and spare parts enquiries, please email [support@accurascale.co.uk](mailto:support@accurascale.co.uk) or contact Accurascale using the details below.

**United Kingdom**

Accurascale  
Dalton House  
60 Windsor Avenue  
London  
SW19 2RR  
United Kingdom

**Rest of World**

Accurascale  
Suit 8 The Hyde Building  
The Park  
Carrickmines  
D18 Y3F9  
Ireland