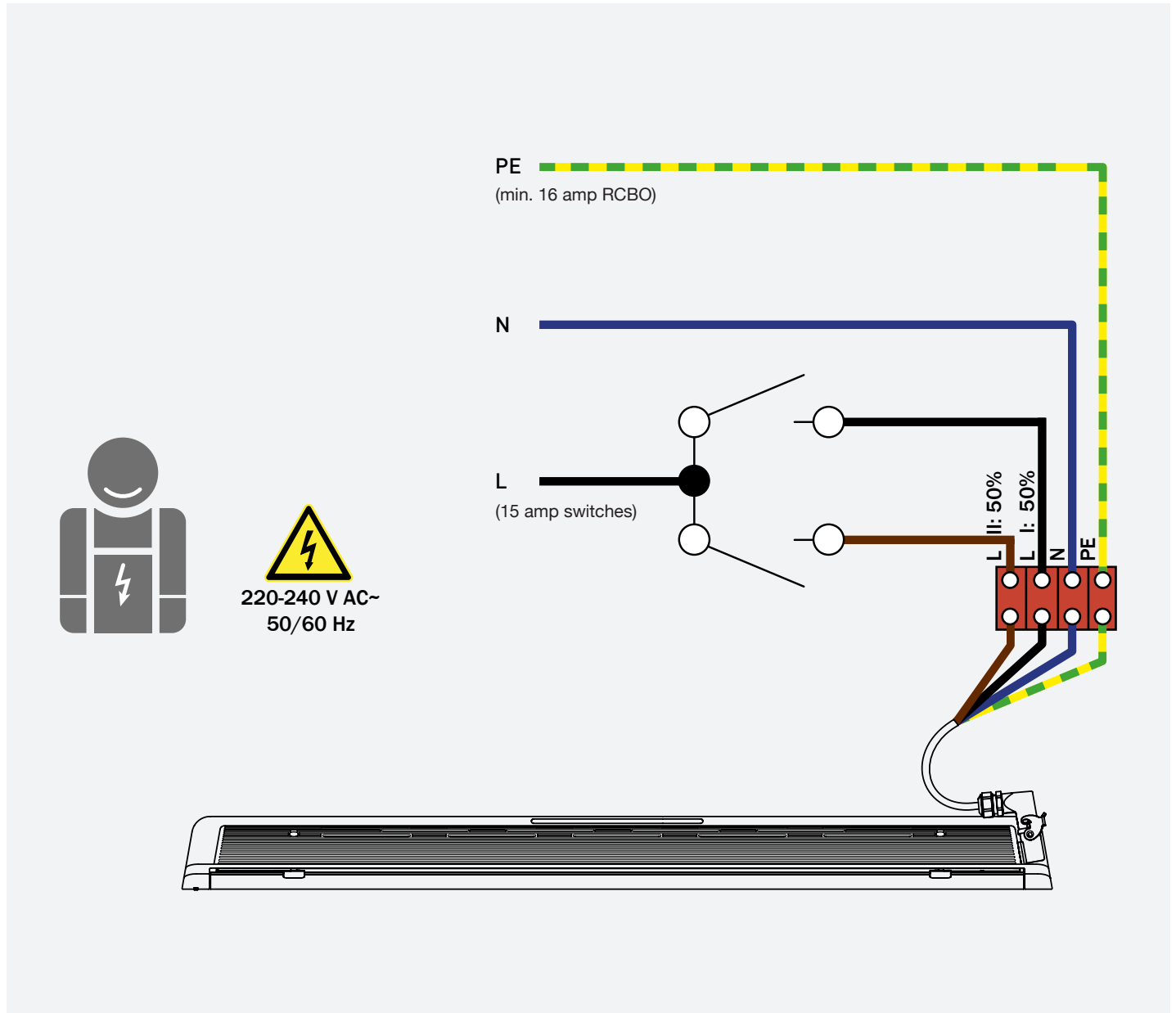


# STANDARD ELECTRICAL CONNECTION WITH 2 GANG SWITCH

Circuit breaker / fuse switch on the installation side



# WIFI SMART SWITCH CONNECTION WITH 3 GANG SWITCH

To the eWeLink APP using BLUETOOTH

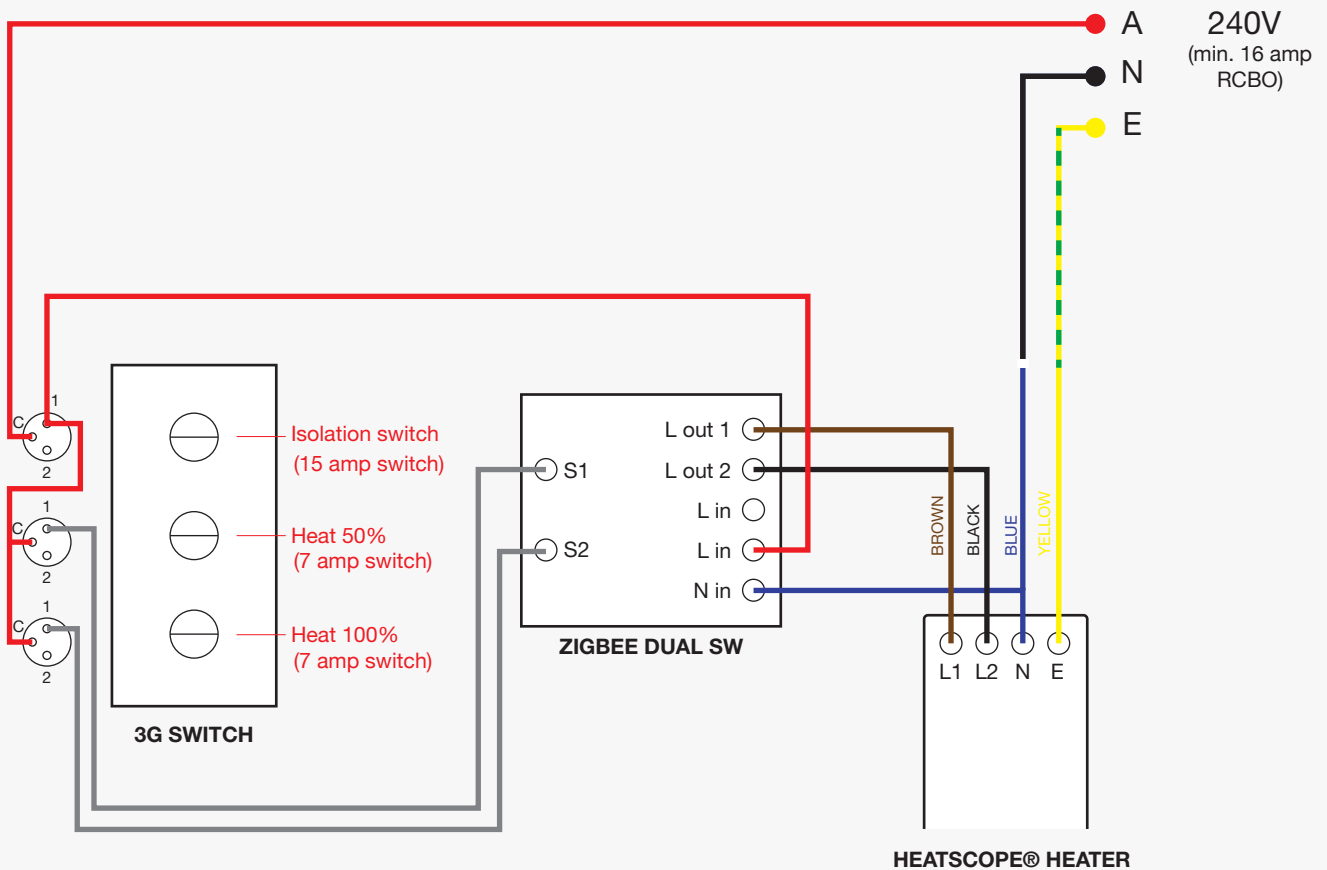
**BEFORE STARTING – PLEASE MAKE SURE THE WIFI SWITCH IS CONNECTED TO THE HEATER BY FOLLOWING:**

Wiring diagram for the following models:

**Spot 2800W** HTS.1.SPT.28.BL  
HTS.1.SPT.28.WH

**Vision 3200W** HTS.1.VIS.32.BL  
HTS.1.VIS.32.WH

**Pure 3000W** HTS.1.PUR.30.BL  
HTS.1.PUR.30.WH



© MHS Munich Home Systems GmbH. Subject to change to all information, technical data, printing and typesetting errors.

**AFTER CONFIRMING THE ABOVE, TURN THE SWITCHES ON THE HEATER TO ON AND THE OTHER ON 100%.**

MAD DESIGN AUSTRALIA PTY LTD

V0722

mad-australia.com

Unit 2 / 2-12 Tennyson Road  
Gladesville NSW 2111 Australia  
T 02 9997 3050 E info@mad-australia.com

**STEP 1**

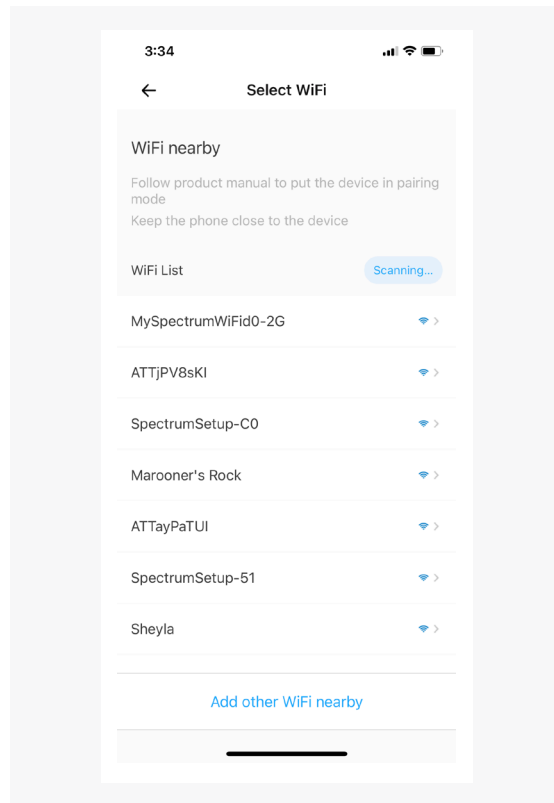
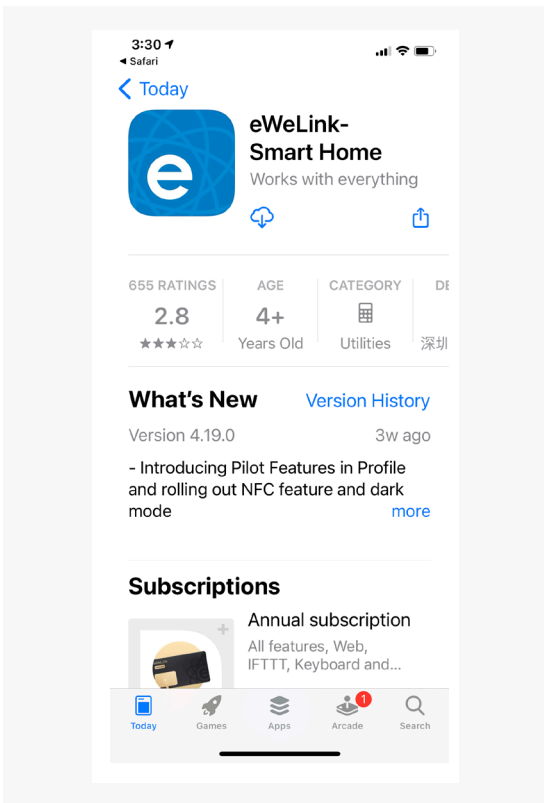
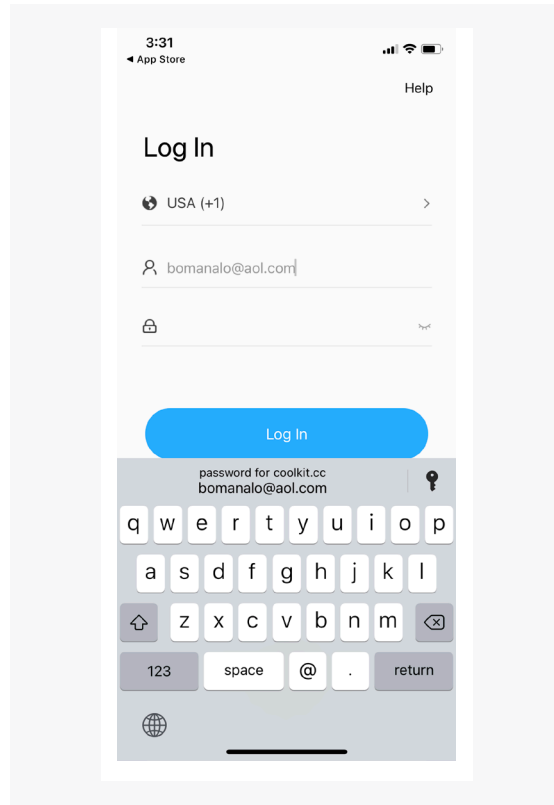
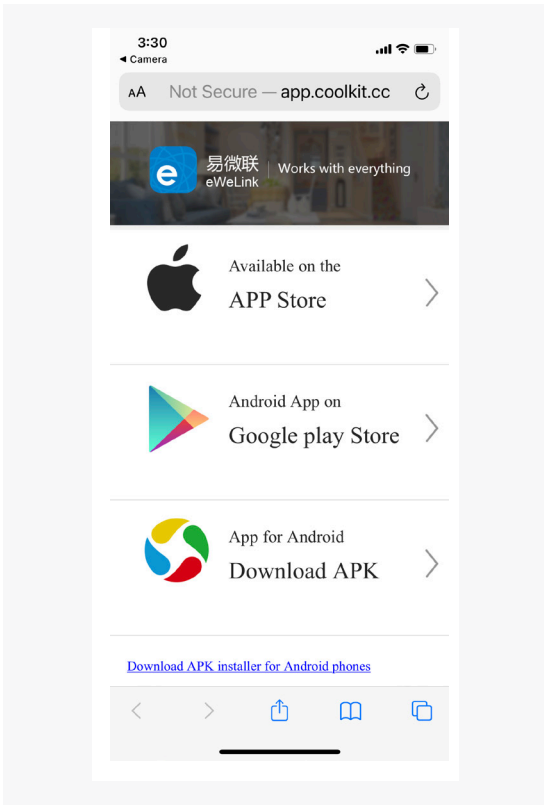
Download the eWeLink app to your cell phone or tablet and sign up for an account. You can download from Google Play or App Store.

Select to download eWeLink-Smart Home and click Open once the download is finished.

**STEP 2**

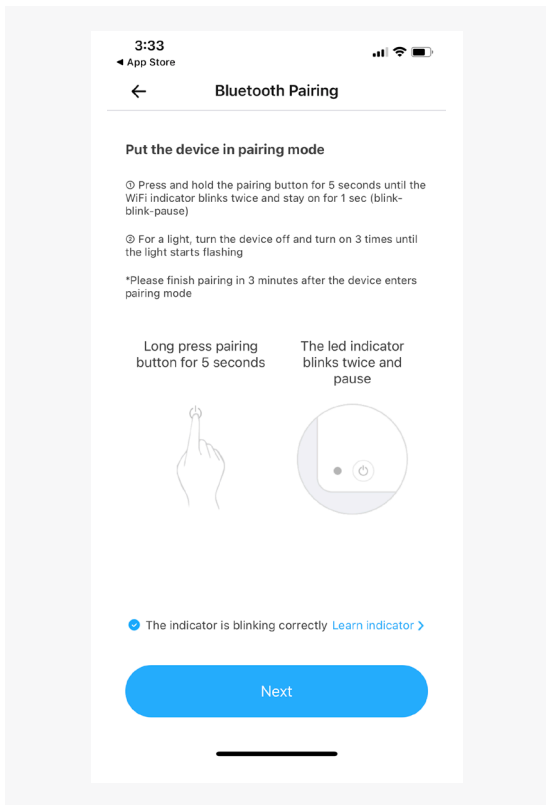
Create an account with eWeLink if you don't have one already.

Connect eWeLink to the device and your network.



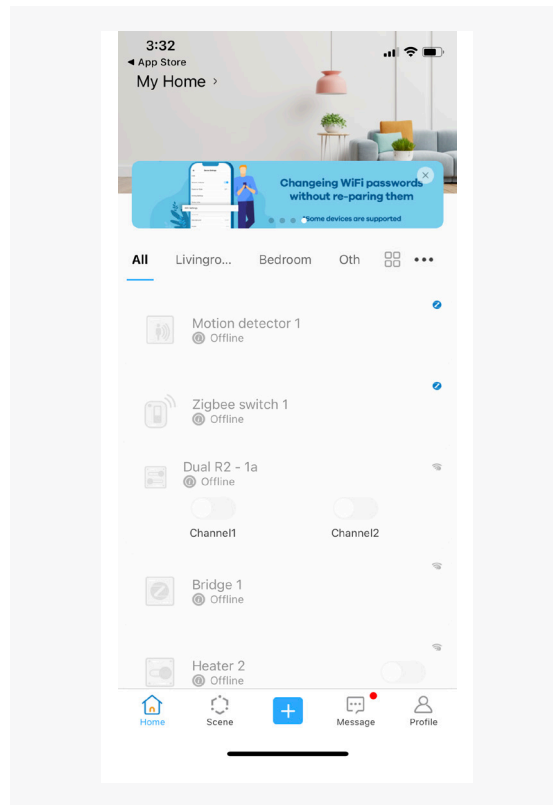
### STEP 3

After powering the heater breaker ON, the WiFi switch will enter the Bluetooth Pairing Mode during first time use. The WiFi LED indicator will light in a cycle of 2 short and 1 long flashes. The device will exit the Bluetooth Pairing Mode if not paired within 3 minutes. If you want to enter this mode again, press the pairing button for 5 seconds until the WiFi LED indicator changes back in a cycle of 2 short and 1 long flash and release.



### STEP 4

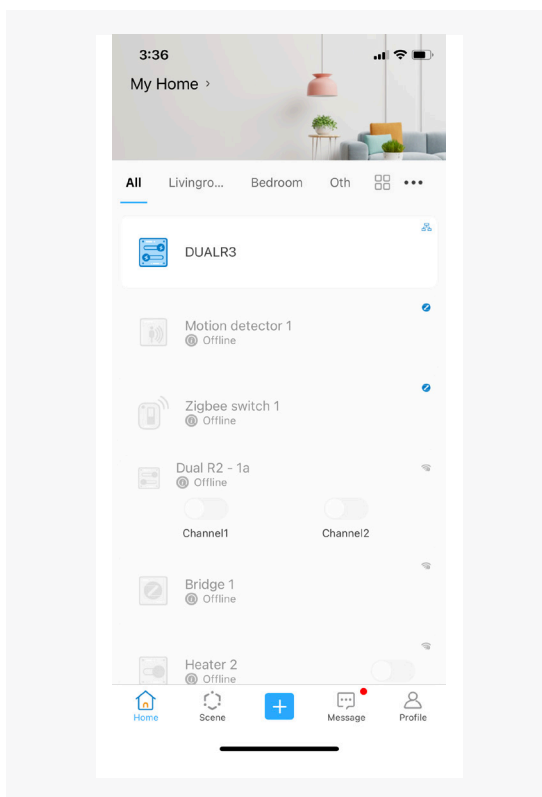
On your phone or tablet, tap “+” and select Bluetooth pairing, then follow the prompt on the APP. You will see a list of available WiFi connections. Select your home WiFi network and enter your password. Then Save. When you see the message “Device Added Successfully”, click Done.



### STEP 5

After you have successfully completed the connection and pressed Done, you will be able to see the WiFi device on the list. Select it and it will take you to the screen showing the different working modes.

Select Switch then select External Trigger Mode and select Edge mode then Save.



### STEP 6

After clicking Save from the previous step, you will see the 2 switches marked Channel 1 and Channel 2. You can now control the heater with these 2 switches. Channel 1 turns the unit ON/OFF and Channel 2 controls the 50% or 100% heat setting. (Make sure that you have turned the heater switches on the back of the heater to ON and to 100% setting).

NOTE: If you are connecting multiple Heatscope heaters, repeat steps 2 – 5 until all switches are paired.

