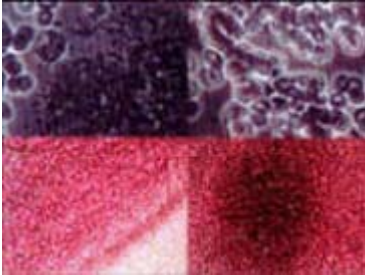


Blood Analysis

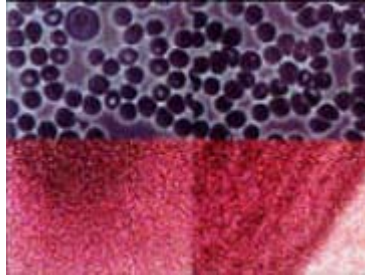
The pictures below show a subject's blood analysis using a dark stain technique perfected by Dr. Harold Klassen, who has over 16 years of blood research.

Before intraMAX™



The picture below shows red blood cells exhibiting stacking and clumping, indicative of poor health

After intraMAX™



This photo shows the same patient's blood just 45 minutes later after taking intraMAX™.

This analysis, performed by Dr. Klassen, shows how intraMAX™ is absorbed at the cellular level. intraCELL V™ technology penetrates red blood cells with essential nutrients, supporting a healthy state.