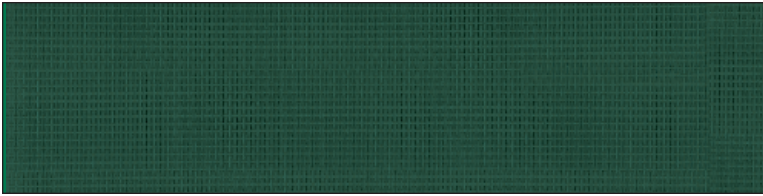


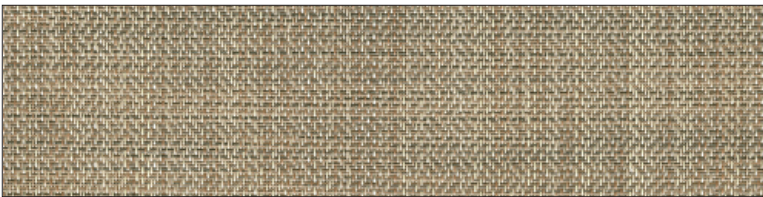
## Distinctive fabric choices



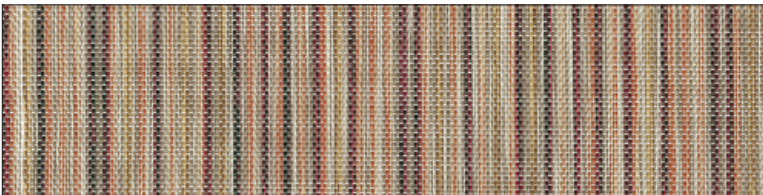
Forest Green



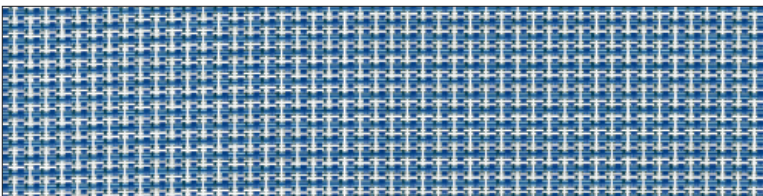
Chesterfield (Soft Cream / Light Almond / Light Brown / Mocha Brown)



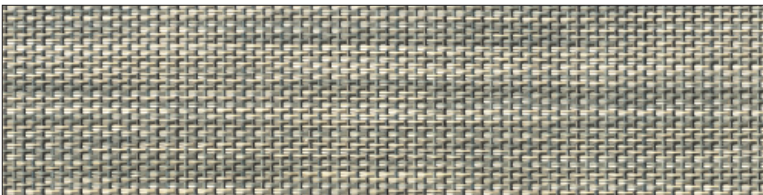
Basketweave (Earthtones of Tan / Light Brown / Silver Gray)



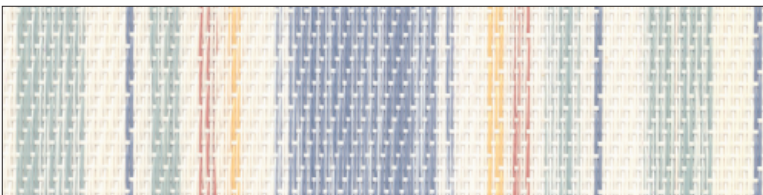
Earth Bright (Copper / Tan / Golden / Russet / Bronze)



Sea Breeze (Sky Blue / Navy Blue / White)



Autumn Fern (Green Earthtones with Creme and Yellow)



Elizabeth (Lt. Blue / Lt. Greens / Creme / Yellow / Lt. Burgundy)

## Style & Elegance with WhisperGLIDE Canopies & Cushions

WhisperGLIDE canopies and optional cushions match style and elegance with strength & durability. Materials are designed for extreme outdoor environments. **Premium grade select stock fabrics** are Textilene® vinyl or Leisuretex™ vinyl/olefin blend. These fabrics are tough, easy to clean, and will last for years.



**Stainless steel snaps** are fastened to straps that attach the canopy to the frame, or the cushion to the swing seat. The straps are easy to unsnap for removal of the canopy or cushion, for off-season storage.

**Marine-grade thread** is used for the canopies and cushions, thus providing greater durability. **Finishing touches** include the canopy scallops and trim, and cushion detailing. The 78-inch wide WhisperGLIDE canopy gives generous shade.

**For Free Samples of Actual Cushion & Canopy Fabric Swatches, Call Toll-Free Today 1-800-944-7737 or visit us at [www.whisperglide.com](http://www.whisperglide.com)**

*Experience the Feeling!*

**WhisperGLIDE®**  
SWING CO. LLC

AMERICA'S FINEST THERAPEUTIC SWINGS

P.O. Box 188, Mosinee, WI 54455  
email: [swings@whisperglide.com](mailto:swings@whisperglide.com)  
FAX: 1-715-457-0048

**1-800-944-7737**

*Check us out on our new website, or call us!*

**[www.whisperglide.com](http://www.whisperglide.com)**

\* Offers and specifications (e.g. canopy selection) subject to change without notice or obligation.

\* TEXTILENE® is a registered trademark of Twitchell Corporation.

*Swing is Manufactured exclusively for WhisperGLIDE by Crystal Finishing Systems Schofield, Wisconsin*



**MADE IN U.S.A.  
SINCE 1987**

WGC-402-I

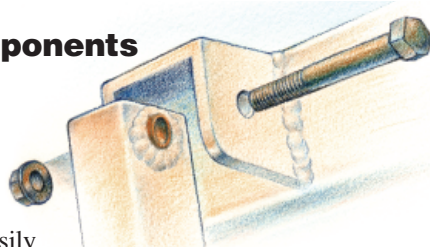
© Feb 2019, WhisperGLIDE Swing Co.

# A Close Look at *WhisperGLIDE* Excellence!

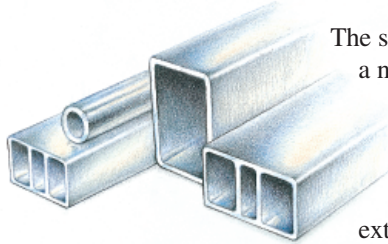
## ENGINEERED TO LAST!

### 1. Whisper-Action Components

The hallmark of the *WhisperGLIDE* Swing is the easy swinging action. To assure a quiet, smooth ride, we use only self lubricating full-length bronze bushings, and half-inch stainless steel bolts. Thus, you can easily swing by gently moving the table handrail with your hands, or by simply pushing on the swing platform with your feet.

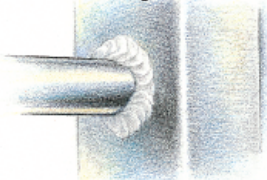


### 2. Aluminum Frame Construction



The swing frames are made of aluminum – a non-rusting metal which is ideal for use in extreme environments. Strength is a top priority in our designs. We use heavy gauge aluminum and channels where necessary. Our specified alloy is extruded, tempered, and then precision-cut

prior to welding. Most welds are “complete circumference”, running along the entire joint of the welded pieces.

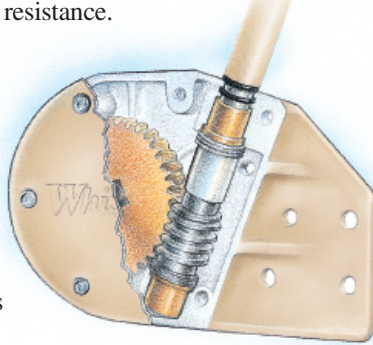


### 3. Stainless Steel

From the assembly bolts and nuts to the lock-up shafts and swing pivot shafts, our extensive use of stainless steel gives confidence even in the most extreme environments. These components are primarily high grade alloys, for maximum corrosion resistance.

### 4. The Custom Gearbox

The wheelchair-accessible swing allows for easy entry and exit, simply because the ramp can be gracefully lowered and raised with the gearbox. Materials used include stainless steel, bronze and aluminum. The result is a smooth-action of grease-enclosed components that allows you to use the wheelchair ramp with ease.



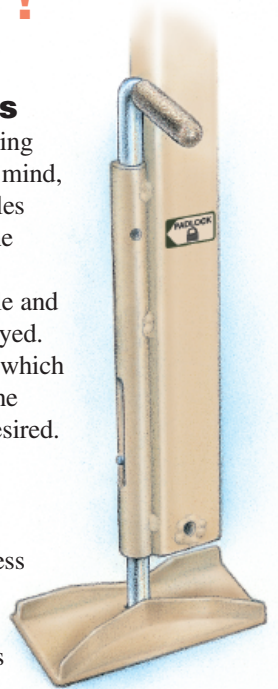
### 5. Cushion & Canopy

Constructed from premier Textilene vinyl coated polyester fabric which withstands fading, is mildew resistant, and known world over for its durability in continuous outdoor exposure. Solid stainless steel snaps securely fasten the cushions and canopy to the swing. Marine-grade UV stable nylon thread is used in the construction of the canopy and cushions.



### 6. The Twin Lock-ups

Twin lock-ups facilitate safety during entry and exit. With simplicity in mind, the design of the lock-up receptacles provides a secure interface with the stainless steel lock-up shafts. The swing is thus adequately stable and fixed while the lock-ups are deployed. Also featured are padlock holes – which enable you to completely secure the swing in an immovable state, if desired.



### 7. Finishes

It's no surprise that we utilize a state-of-the-art powder paint process for finishing – the result of this technology speaks of extreme durability. This multi-step process applies powder paint using electrostatics. The paint is then baked at more than 400 degrees, which bonds it to the aluminum, and provides a hard, scratch resistant surface.

### 8. Vinyl

The seats, floor, wheelchair platform and ramp are made of vinyl clad steel. The closed-cell vinyl provides a surface that is easy to clean, comfortable, and attractive. In addition, we incorporate ultraviolet stabilizers directly into the vinyl, for long-lasting protection.

## SAFETY CONSIDERATIONS

### 9. Optional Security Lap Bar

The Lap Bar is easy to place and remove. Upper Frame Clips are provided for storage.



### 10. Engineered for Safety

- The simple dual lockup feature prevents movement of swing during entry and exit.
- Safety Information and Warning Labels on the swing give specific directions for secure use of the swing.
- Engineered and manufactured for commercial use, the *WhisperGLIDE* Swing has an exemplary safety record for more than 25 years.

**Call today! 1-800-944-7737**