

INSTRUCTIONS

SPIN SQUARE



8290/3030
8290/3031

MATT BLACK
MATT WHITE

Please read the instructions before commencing installation and retain for future reference.

SPECIFICATIONS:

- **Fitting:** Body made in metal and aluminium
- **Lamp types:** Illuminated base: 6W / LED 3000K
Reading light: 3W / LED 3000K
- **Protection against electric shock:** CLASS II. Does not require earth connection.
- **Ingress Protection:** IP20. Protection against the entry of solid bodies with dimensions > 12mm
- **Driver:** Includes integral LED driver.
- **Quality/Corrosive rating:** Suitable for indoor wall installation.
- **Ambient temperature range:** -20°C to +60°C.

INSTALLATION INSTRUCTIONS:

⚠ Electrical products can cause death, injury, damage to property. Installation of this product must be carried out by a qualified electrician. On completion of installation, ensure that the Certificate of Compliance is updated.

CAUTION: Risk of electric shock



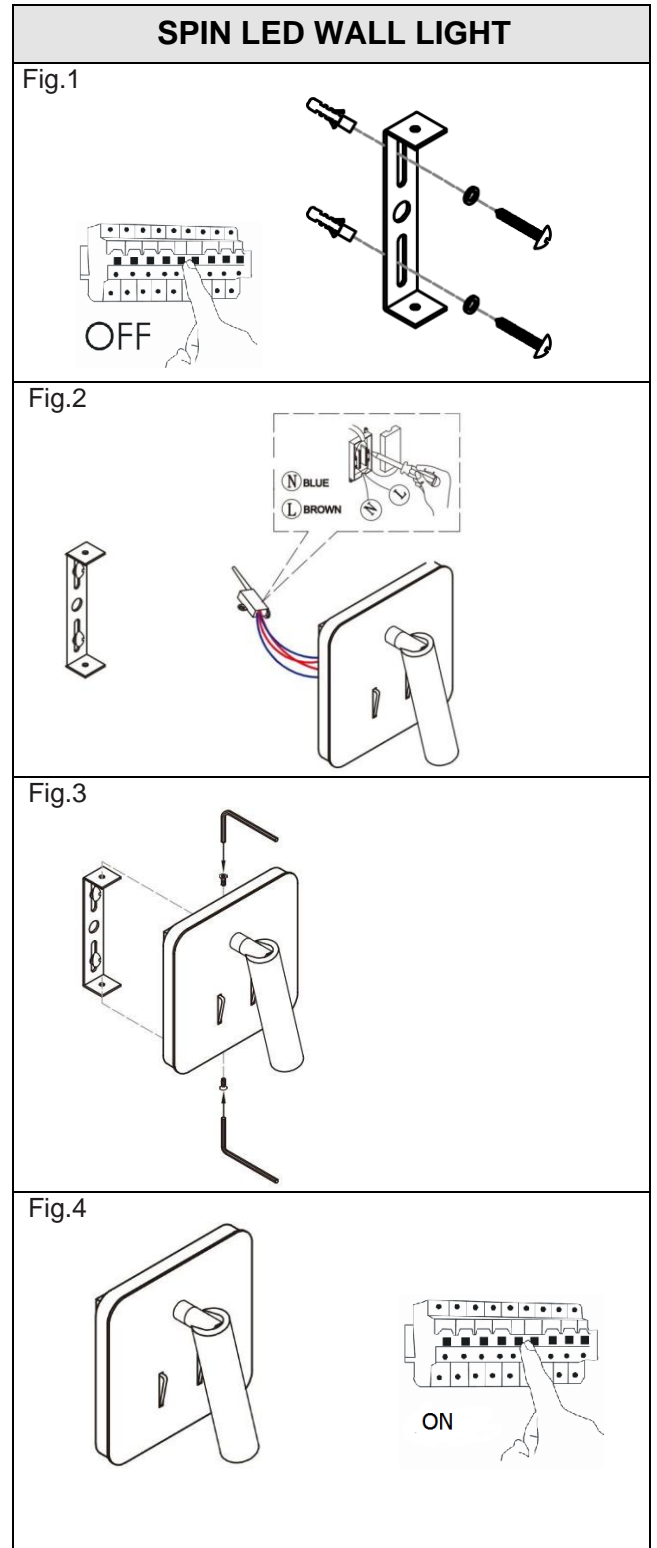
Ensure mains supply is switched off.

- Remove the wall bracket from the fitting and install it on the wall. (Fig. 1)
- Connect the fitting to its electrical source with terminal block supplied. (Fig. 2)
Brown (Live) - to Brown or Red
Blue (Neutral) - to Blue or Black
- Re-attach the body of the fitting to wall bracket. (Fig. 3)

Switch on mains supply and test the fitting. (fig. 4).

WARNING:

- Ensure all items and screws are secure and fitted correctly



Spazio Lighting (Pty) LTD.

JOHANNESBURG OFFICE: 52 Andries Street | Wynberg/Sandton

CAPE TOWN OFFICE: 36 Milner Street | Paarden Eiland

DURBAN OFFICE: 31 Solstice Road | Umhlanga Ridge

011 555 5555 (Central Switchboard) | info@spazio.co.za