

INSTRUCTIONS



RITZ WALL LAMP

5274.01.31

Please read the instructions before commencing installation and retain for future reference.

SPECIFICATIONS:

- **Fitting:** Metal body with acrylic diffuser.
- **Lamp types:** 9W/230V LED 3000K
- **Protection against electric shock:** CLASS I requires earth connection.
- **Ingress protection:** IP20. Protection against the entry of solid bodies with dimensions more than 12mm.
- **Ballast:** Includes LED Driver
- **Quality/Corrosive rating:** Suitable for indoor domestic and commercial use only
- **Ambient temperature range:** -20° to +50°
- **Maximum protected area:** 0.20m×0.11m=0.22 m²

INSTALLATION INSTRUCTIONS:

⚠ Electrical products can cause death, injury or damage to property. Installation of this product must be carried out by a qualified electrician, in accordance with SANS 10142. On completion of installation, ensure that the Certificate of Compliance is updated.



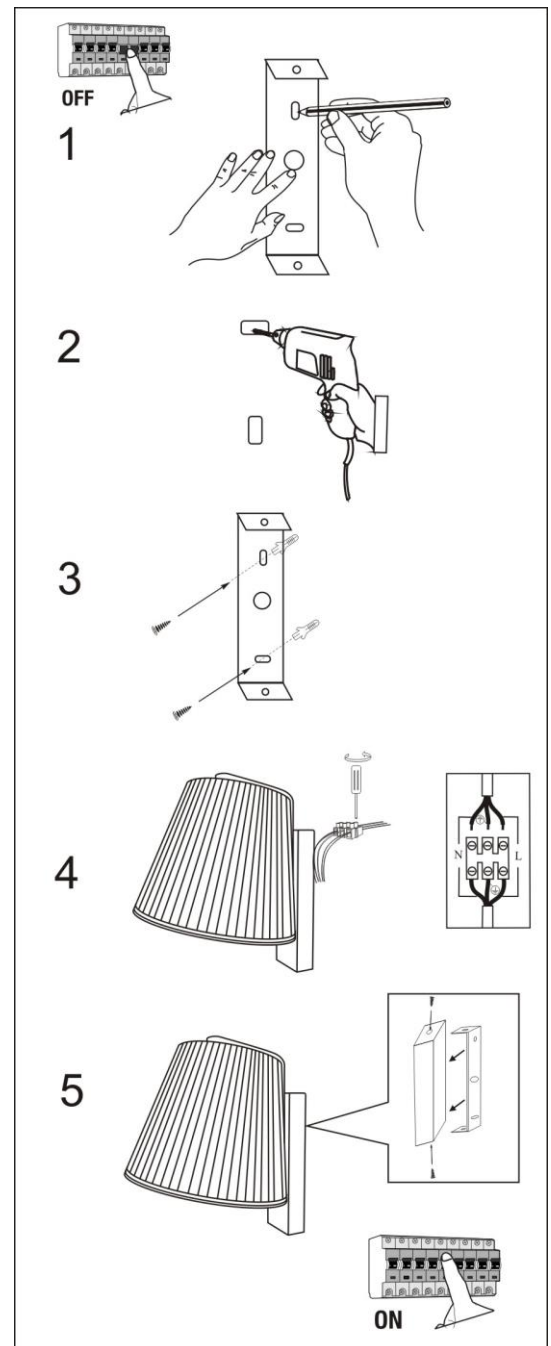
CAUTION: Risk of electric shock

PLEASE NOTE: The light source contained on this luminaire shall only be replaced by the manufacturer or the service agent or a similar qualified person.

Ensure mains supply is switched off.

- Mark where you would like to install the fitting (**Fig. 1**)
- Drill holes where you have marked. (**Fig.2**)
- Insert the expansion plugs and thread the mains cable through the bracket. Attach the bracket securely to the wall (**Fig.3**)
- Connect the terminal block to the main power cable. (**Fig. 4**)
Brown(Live) -to Brown or Red
Blue(Neutral) – to Blue or Black
Yellow/Green(Earth) - Green/Copper
- Re-attach the fitting to wall bracket and turn on mains supply. (**Fig. 5**)

WARNING: Ensure all parts are securely connected and place



Spazio Lighting (Pty) LTD.

JOHANNESBURG OFFICE: 52 Andries Street | Wynberg/Sandton

CAPE TOWN OFFICE: 36 Milner Street | Paarden Eiland

DURBAN OFFICE: 31 Solstice Road | Umhlanga Ridge

011 555 5555 (Central Switchboard) | info@spazio.co.za