

# INSTRUCTIONS

# SPAZIO

## NEO CLASSIC

5272.2

Please read the instructions before commencing installation and retain for future reference.

### SPECIFICATIONS:

- **Fitting:** Body made in stainless steel with opal glass diffuser.
- **Lamp types:** 25W / G9
- **Protection against electric shock:** CLASS I. Requires earth connection.
- **Ingress Protection:** IP44. Protection against the entry of solid bodies greater than 1mm, Protection against water sprays.
- **Ballast:** NA
- **Quality/Corrosive rating:** Suitable for indoor applications.
- **Ambient temperature range:** -8°C to +55°C.

### INSTALLATION INSTRUCTIONS:



Electrical products can cause death, injury, damage to property. Installation of this product must be carried out by a qualified electrician, in accordance with SANS 10142. On completion of installation, ensure that the Certificate of Compliance is updated.



**CAUTION:** Risk of electric shock

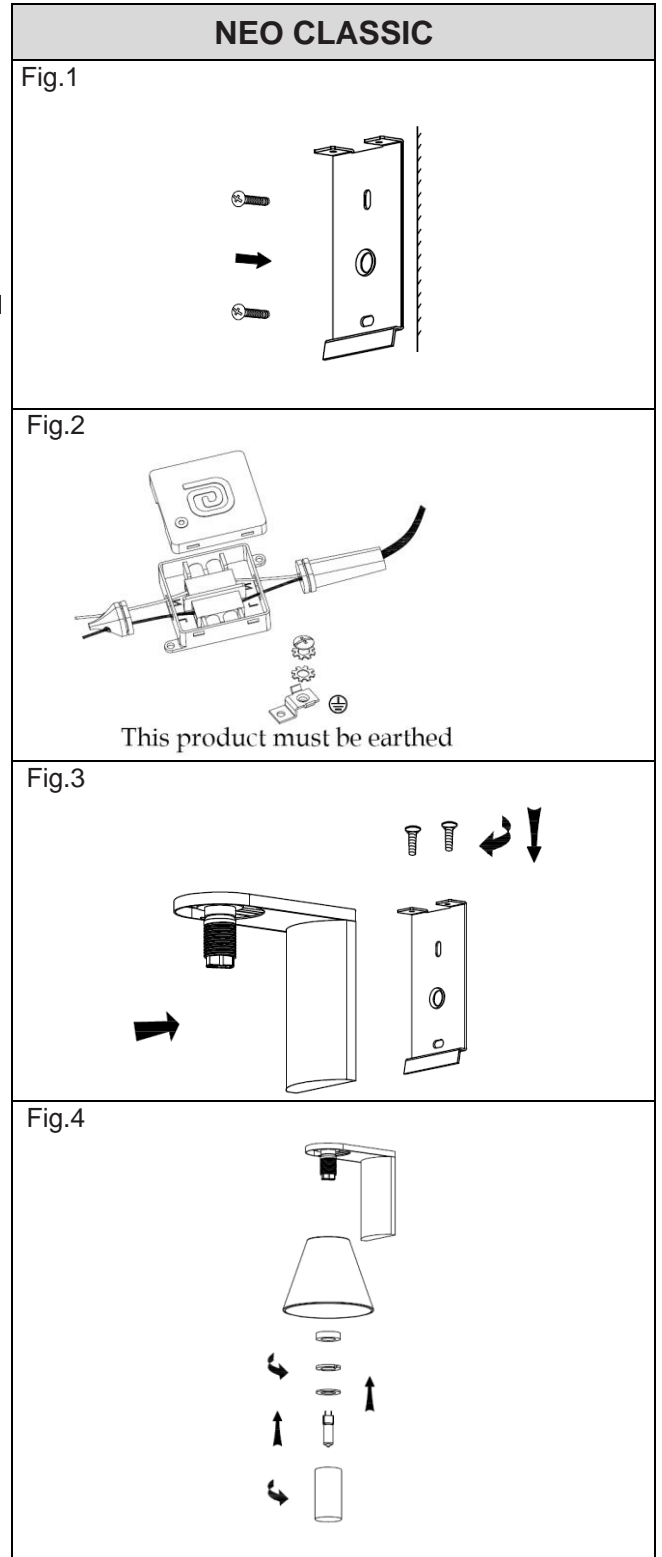
#### Switch off mains supply.

- Fix the bracket to the wall. (Fig. 1)
- Connect the fitting to its electrical source (Fig. 2)  
Brown (Live) - to Brown or Red  
Blue (Neutral) - to Blue or Black  
Green/Yellow (Earth) - to Green/Yellow or Copper.
- Fix the wall base to the wall bracket (Fig. 3)
- Install the lamp and the glass shade (Fig. 4)

#### Switch on mains supply

#### WARNING:

- Ensure all items and screws are secure and fitted correctly.



Spazio Lighting (Pty) LTD.

JOHANNESBURG OFFICE: 52 Andries Street | Wynberg/Sandton

CAPE TOWN OFFICE: 36 Milner Street | Paarden Eiland

DURBAN OFFICE: 31 Solstice Road | Umhlanga Ridge

011 555 5555 (Central Switchboard) | [info@spazio.co.za](mailto:info@spazio.co.za)