

INSTRUCTIONS



LED EMERGENCY DOWNLIGHT RECESSED

4651 5000K

Please read the instructions before commencing installation and retain for future reference.

SPECIFICATIONS:

- **Fitting:** PC housing+ Aluminum heat sink
- **Lamp types:** 2W / 230V / LED 5000K
- **Protection against electric shock:** CLASS II: Does not require earth connection.
- **Ingress Protection:** IP20. Protection against the entry of solid bodies with dimensions of more than 12mm.
- **Quality/ Corrosive rating:** Suitable for indoor commercial and residential use, except in corrosive environments.
- **Ambient temperature range:** 0°C to +45°C.
- **Charge time:** 24 hours
- **Test mode:** Auto test
- **Battery type:** Lithium 6.4V 1500mA
- **Emergency duration:** 3 hours

INSTALLATION INSTRUCTIONS:



Electrical products can cause death, injury or damage to property. Installation of this product must be carried out by a qualified electrician, in accordance with SANS 10142. On Completion of installation, ensure that the Certificate of Compliance is updated.



CAUTION: Risk of electric shock.

PLEASE NOTE: The light source contained on this luminaire shall only be replaced by the manufacturer or the service agent or a similar qualified person.

Turn off mains supply

- Back of the fitting to be placed 50mm from any building element above fitting (Fig 1. A), 30mm from the side of the building structure membrane (Fig1. B) and 30mm from the side of the thermal insulation. (Fig1. C).
- Make the cut out in the ceiling. (Fig.2).
- Connect the battery. (Fig. 3)
- Connect the fitting to main supply using the terminal block supplied (Fig. 4)
- Lift the spring clips and install in the ceiling (Fig. 5)

Turns on main supply

WARNING:

- Ensure all items and screws are tight.
- Refer to product labels to confirm the input voltage.
- Confirm the fitting is installed correctly before operation.
- Check whether the fitting is clean and dry before installation.
- Do not make any modifications to the fitting at random.

LED EMERGENCY DOWNLIGHT RECESSED

FIG.1

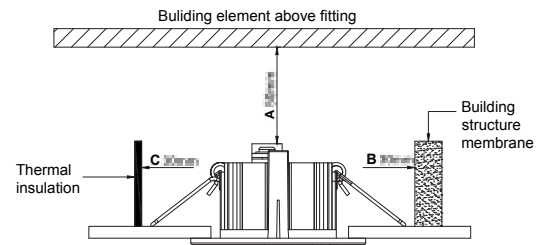


FIG.2

Emergency Downlight Dia. (mm)	55/80
Ceiling Cutout (mm)	Ø 42-50 Ø 66-70

FIG.3

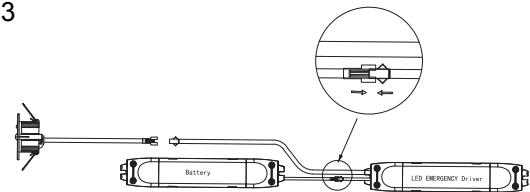


FIG.4

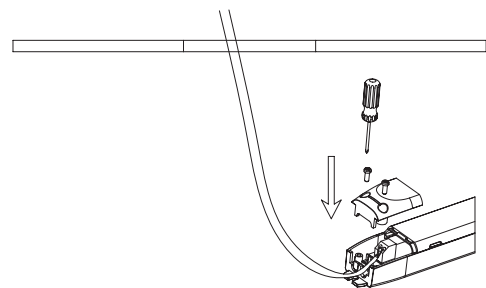
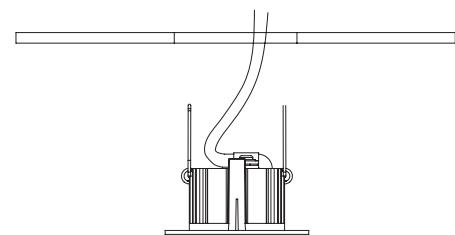


FIG.5



Spazio Lighting (Pty) LTD.

JOHANNESBURG OFFICE: 52 Andries Street | Wynberg/Sandton

CAPE TOWN OFFICE: 36 Milner Street | Paarden Eiland

DURBAN OFFICE: 31 Solstice Road | Umhlanga Ridge

011 555 5555 (Central Switchboard) info@spazio.co.za