

# INSTRUCTIONS



## FOCAL WALL LIGHT

ROUND

**4547.1.3030 4547.1.3031**

**4547.1.4030 4547.1.4031**

SQUARE

**4547.2.3030 4547.2.3031**

**4547.2.4030 4547.2.4031**

Please read the instructions before commencing installation and retain for future reference.

## SPECIFICATIONS

- **Fitting:** Body made in Polycarbonate & ABS with Polycarbonate diffuser.
- **Lamp types:**  
4547.1: 8W/ LED 3000 or 4000K  
4547.2: 8W/ LED 3000 or 4000K
- **Protection against electric shock:** CLASS II.
- **Ingress Protection:** IP65. Complete protection against dust and against the effects of water jets.
- **Driver:** Includes LED Driver
- **Quality/Corrosive rating:** Suitable for outdoor / indoor commercial applications
- **Ambient temperature range:** -20°C to +55°C.

## INSTALLATION INSTRUCTIONS:

**⚠** Electrical products can cause death, injury, damage to property. Installation of this product must be carried out by a qualified electrician, in accordance with SANS 10142. On completion of installation, ensure that the Certificate of Compliance is updated.



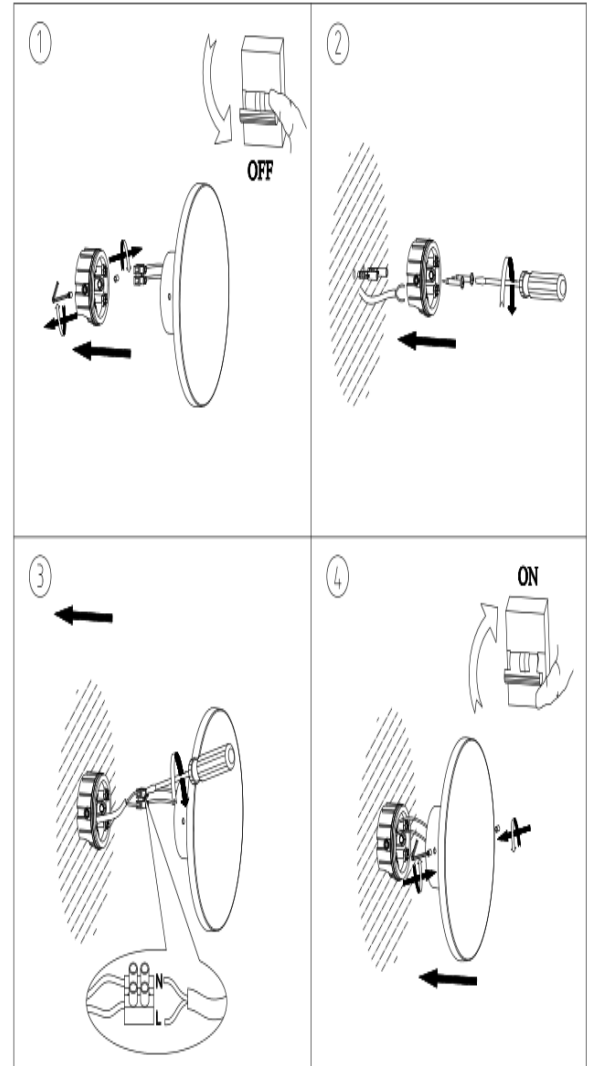
CAUTION: Risk of electric shock

PLEASE NOTE: The light source contained on this luminaire shall only be replaced by the manufacturer or the service agent or a similar qualified person.

### Ensure main supply is switched off.

- Remove the mounting base from the body.(Fig.1).
- Feed the main supply cable through the grommet in the base and fix the base to the wall (Fig.2)
- Connect the main cable to the terminal block provided and ensure correct connection as marked.(Fig.3):  
Brown(Live) -to Brown or Red  
Blue(Neutral) – to Blue or Black
- Re-attach the body to the mounting base and tighten the allen key screws. (Fig.4)

**WARNING:** Ensure all items and screws are secure and fitted correctly.



**Spazio Lighting (Pty) LTD.**

**JOHANNESBURG OFFICE:** 52 Andries Street | Wynberg/Sandton

**CAPE TOWN OFFICE:** 36 Milner Street | Paarden Eiland

**DURBAN OFFICE:** 31 Solstice Road | Umhlanga Ridge

**011 555 5555 (Central Switchboard) | info@spazio.co.za**