

INSTRUCTIONS



BLOCK WALL LIGHT

4543.1.31 4543.1.30 4543.1.50
4543.2.31 4543.2.30 4543.2.50

Please read the instructions before commencing installation and retain for future reference.

SPECIFICATIONS:

- **Fitting:** Body made in aluminium with tempered glass diffuser
- **Lamp types:** 4543.1: 10W / Gu10 LED
4543.2: 2 x 10W / Gu10 LED
- **Protection against electric shock:** CLASS I. Requires earth connection.
- **Ingress Protection:** IP44. Protection against the entry of objects greater than 1mm and water splashes
- **Quality/Corrosive rating:** Suitable for commercial use and outdoor applications.
- **Ambient temperature range:** -20°C to +50°C.

INSTALLATION INSTRUCTIONS:

⚠ Electrical Products can cause death, injury, damage to property. Installation of this product must be carried out by a qualified electrician, in accordance with SANS 10142. On completion of installation, ensure that the Certificate of Compliance is updated.

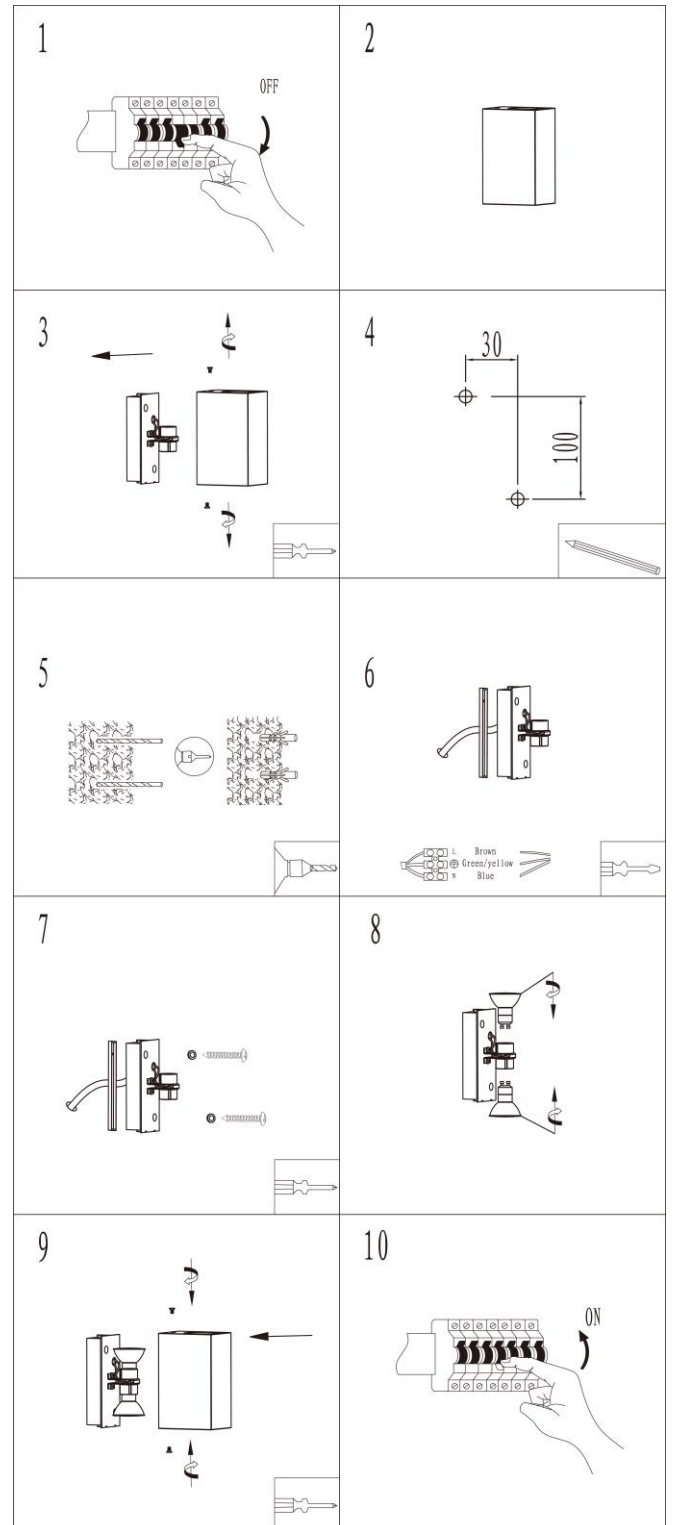
Turn off the power supply. (Fig. 1)

- Remove the mounting base from the fitting (Fig. 2)
- Drill holes in the wall and place the plastic expansion bolts into the holes. (Fig. 3)
- Thread the power supply cable through the hole in the base plate and connect it to the terminal block: (Fig. 6)
Brown (Live) - to Brown or Red
Blue (Neutral) - to Blue or Black
Earth - Yellow/Green or Copper
- Fix the base plate to the wall. Do not forget to install the plastic O-rings together with the screws. (Fig. 7)
- Install the lamp.
NOTE: The lamp wattage must not exceed the wattage required for this fitting
- Fix the diffuser body to the base plate. (Fig. 9)

Turn on the power supply and test the fitting. (Fig. 10)

WARNING:

- Ensure all items and screws are secure and fitted correctly.



Spazio Lighting (Pty) LTD.

JOHANNESBURG OFFICE: 52 Andries Street | Wynberg/Sandton

CAPETOWN OFFICE: 36 Milner Street | Paarden Eiland

DURBAN OFFICE: 31 Solstice Road | Umhlanga Ridge

011 555 5555 (Central Switchboard) | info@spazio.co.za