

# INSTRUCTIONS

## RAJ, TAI and UNA LED

# SPAZIO

SPAZIO LIGHTING

**Raj:** 4540.1.12.30

**Tai:** 4540.2.12.30

**Una:** 4540.3.06.30

Please read the instructions before commencing installation and retain for future reference.

### SPECIFICATIONS:

- **Fitting:** Body made in ABS & PC plastic with polycarbonate diffuser.
- **Lamp types:**
  - Raj: 12W 230V LED
  - Tai: 12W 230V LED
  - Una: 6W 230V LED
- **Protection against electric shock:** CLASS II.
- **Ingress Protection:** IP65. Complete protection against dust and against the effects of water jets.
- **Quality/Corrosive rating:** Suitable for commercial use and indoor/outdoor applications.
- **Ambient temperature range:** -20°C to +55°C.

### INSTALLATION INSTRUCTIONS:

**⚠** Electrical products can cause death, injury and damage to property. Installation of this product must be carried out by a qualified electrician, in accordance with SANS 10142.

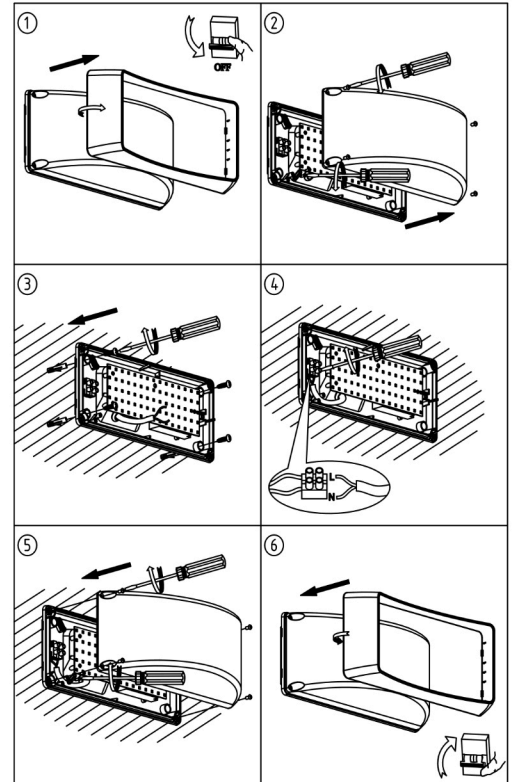
On completion of installation, ensure that the Certificate of Compliance is updated.

- Switch off mains supply.
- Unclip the cover from base(Fig.1)
- Unscrew and remove the PC diffuser (Fig. 2).
- Feed the main supply cable through the grommet in the base and attach the base to the wall(Fig.3)
- Connect the main cable to the terminal block provided and ensure correct connection as marked(Fig.4):
  - Brown (Live) - to Brown or Red
  - Blue (Neutral) - to Blue or Black
- Screw the PC diffuser back on (Fig.5)
- Clip in cover and turn on the power (Fig.6).

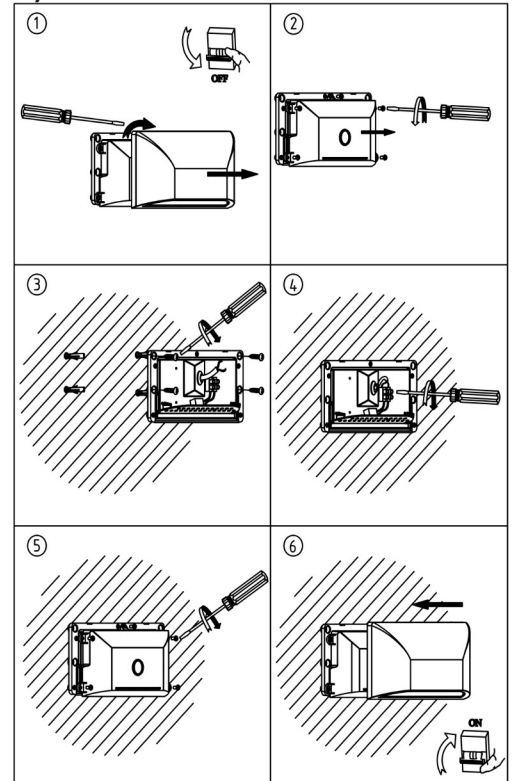
**PLEASE NOTE:** Never look directly into the LED

**WARNING:** Ensure all items and screws are secure and fitted correctly.

### 1) RAJ and TAI



### 2) UNA



Spazio Lighting (Pty) LTD JOHANNESBURG OFFICE: 52 Andries Street | Wynberg/Sandton | South Africa | Tel: +27 11 555 5555

CAPETOWN OFFICE: 36 Milner Street | Paarden Eiland | Tel: +27 21 451 6666

DURBAN OFFICE : 31 Solstice Road | Umhlanga Ridge

011 555 5555 (Central Switchboard) | [info@spazio.co.za](mailto:info@spazio.co.za)