

# INSTRUCTIONS

## ELLA TWICE WALL LIGHT



4530.2/37

Please read the instructions before commencing installation and retain for future reference.

### SPECIFICATIONS:

- **Fitting:** Body made in 202 stainless steel with tempered glass diffuser.
- **Lamp types:** max. 2x10W / 230V / GU10 LED
- **Protection against electric shock:** CLASS I. Requires earth connection.
- **Ingress Protection:** IP44. Protection against the entry of solid bodies greater than 1mm. Protection against water splashes.
- **Driver:** N/A
- **Quality/Corrosive rating:** Suitable for residential and commercial indoor / inland outdoor applications.
- **Ambient temperature range:** -25°C to +55°C.

### INSTALLATION INSTRUCTIONS:

**⚠** Electrical products can cause death, injury, damage to property. Installation of this product must be carried out by a qualified electrician, in accordance with SANS 10142. On completion of installation, ensure that the Certificate of Compliance is updated.



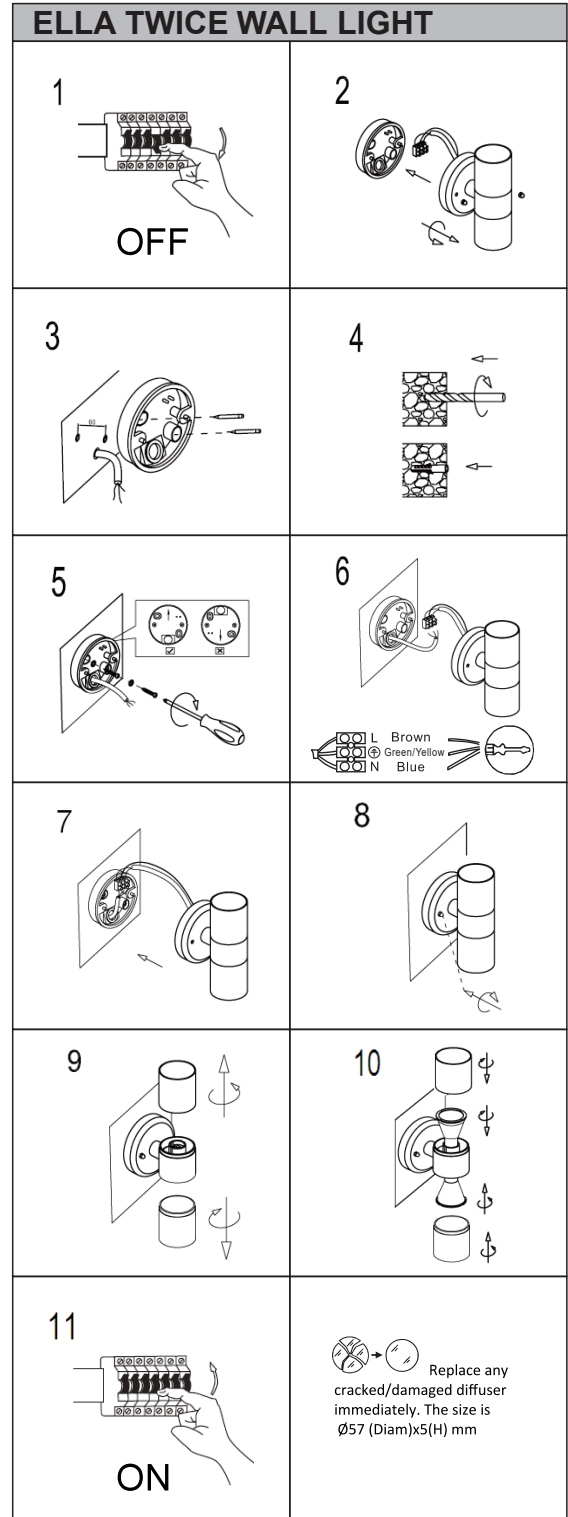
CAUTION: Risk of electric shock

#### Turn off the mains supply.

- Remove the pre-assembled screws and fixed nuts from the fitting and remove the bracket. (Fig.2-3)
- Mark and drill 2 holes in the wall using the bracket as a reference. Insert the expansion anchors into the wall. (Fig.4)
- Install the wall bracket using the screws provided. (Fig.5)
- Connect the fitting to its electrical source using the terminal block provided. (Fig. 6)  
Brown (Live) -to Brown or Red  
Blue (Neutral) -to Blue or Black  
Green/Yellow (Earth) -to Green/Yellow or Copper.
- Re-assemble the fitting with the screws and nuts removed in step 1.(Fig. 7-8)
- Install the lamps. (Fig. 9-10)

#### Turn on the mains supply.

**WARNING:** Ensure all items and screws are secure and fitted correctly.



Spazio Lighting (Pty) Ltd

JOHANNESBURG OFFICE: 52 Andries Street | Wynberg/Sandton | Tel: +2711 555 5555

CAPE TOWN OFFICE: 36 Milner Street | Paarden Eiland | Tel: +2721 461 0061

DURBAN OFFICE: 31 Solstice Road | Umhlanga Ridge | Tel: +2711 555 5555

info@spazio.co.za