

# INSTRUCTIONS



## OZO and TAJ LED 3 CCT

### OZO

4487.3 4487.4 4487.5  
4487.6 4487.7

### TAJ

4495.1 4495.1M 4495.2

Please read the instructions before commencing installation and retain for future reference.

## SPECIFICATIONS

- **Fitting:** Body made in ABS & PC with PC diffuser.
- **Lamp types:**
  - OZO:** Colour changing with switch 3000K, 4000K or 6500K
  - 4487.3: Square Plain 3.5W/ LED
  - 4487.4: Square Downface 1.5W/ LED
  - 4487.5: Slim Plain 4W/ LED
  - 4487.6: Slim Downface 2W/ LED
  - 4487.7: Rec Downface 1W/ LED
  - TAJ:** Colour changing with switch 3000K, 4000K or 6500K
  - 4495.1: Small 2W/ LED
  - 4495.1M: Medium 3.8W/ LED
  - 4495.2: Large 5W/ LED
- **Protection against electric shock:** CLASS II. Does not require earth connection
- **Ingress Protection:** IP65. Complete protection against dust and against the effects of water jets.
- **Driver:** LED driver included
- **Quality/Corrosive rating:** Suitable for commercial use and indoor/outdoor applications.
- **Ambient temperature range:** -20°C to +55°C.

## INSTALLATION INSTRUCTIONS:



Electrical products can cause death, injury, and damage to property. Installation of this product must be carried out by a qualified electrician, in accordance with SANS 10142. On completion of installation, ensure that the Certificate of Compliance is updated.



**CAUTION:** Risk of electric shock  
**PLEASE NOTE:** The light source contained on this luminaire shall only be replaced by the manufacturer or the service agent or a similar qualified person.

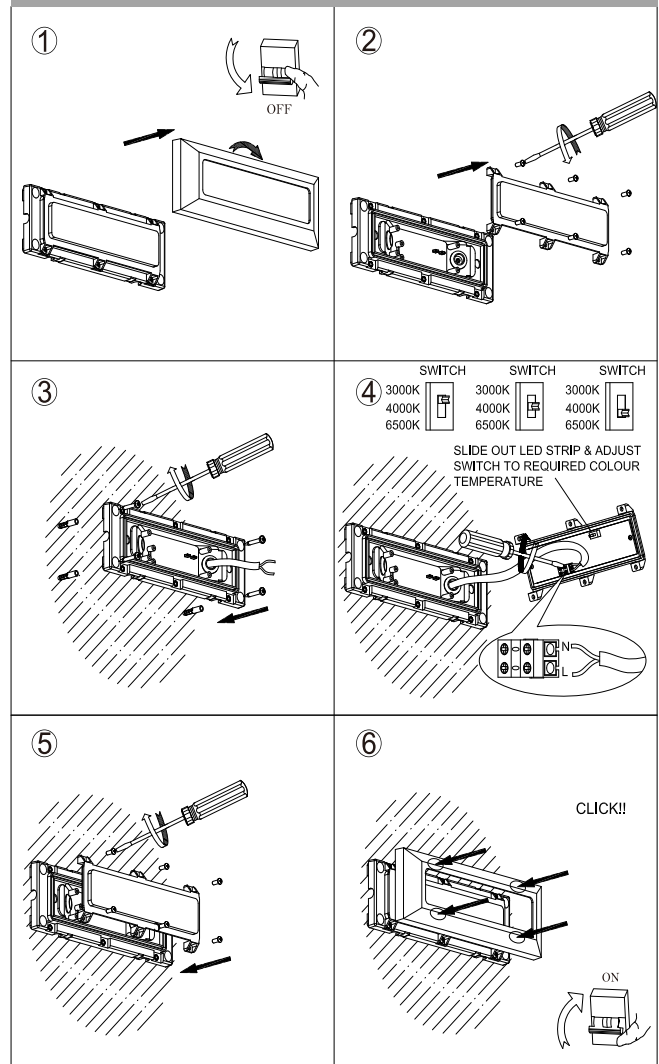
### Ensure mains supply is switched off.

- Remove the cover from housing, unscrew and remove the diffuser. (Fig. 1&2).
- Feed the mains supply cable through the grommet in the base and connect the fitting to the main cable using the terminal block supplied. **Live:** Brown or Red/ **Neutral:** Blue or Black. (Fig. 3&4).
- Select your required colour temperature on the switch. (Fig. 4)
- Re-attach the diffuser and cover. (Fig. 5 and 6).

### Turn on mains supply

**WARNING:** Ensure all items and screws are secure and fitted correctly.

## OZO and TAJ LED 3CCT



### Spazio Lighting (Pty) LTD.

**JOHANNESBURG OFFICE:** 52 Andries Street | Wynberg/Sandton  
**CAPE TOWN OFFICE:** 36 Milner Street | Paarden Eiland  
**DURBAN OFFICE:** 31 Solstice Road | Umhlanga Ridge  
**011 555 5555** (Central Switchboard) | [info@spazio.co.za](mailto:info@spazio.co.za)