

INSTRUCTIONS

PORTICO LED

2848.25.24.30.31 2848.25.24.40.31

Please read the instructions before commencing installation and retain for future reference.

SPECIFICATIONS:

- **Fitting:** Body made in aluminium with a tempered glass diffuser
- **Lamp types:** 25W / LED 3000K or 4000K
- **Protection against electric shock:** CLASS I. Requires earth connection.
- **Ingress Protection:** IP54. Protection against the entry if dust and water splashes.
- **Driver:** Includes LED driver.
- **Quality/Corrosive rating:** Suitable for outdoor/indoor commercial applications.
- **Ambient temperature range:** -20°C to +45°C (?? 50°)

INSTALLATION INSTRUCTIONS:

⚠ Electrical products can cause death, injury, damage to property. Installation of this product must be carried out by a qualified electrician, in accordance with SANS 10142.

On completion of installation, ensure that the Certificate of Compliance is updated.

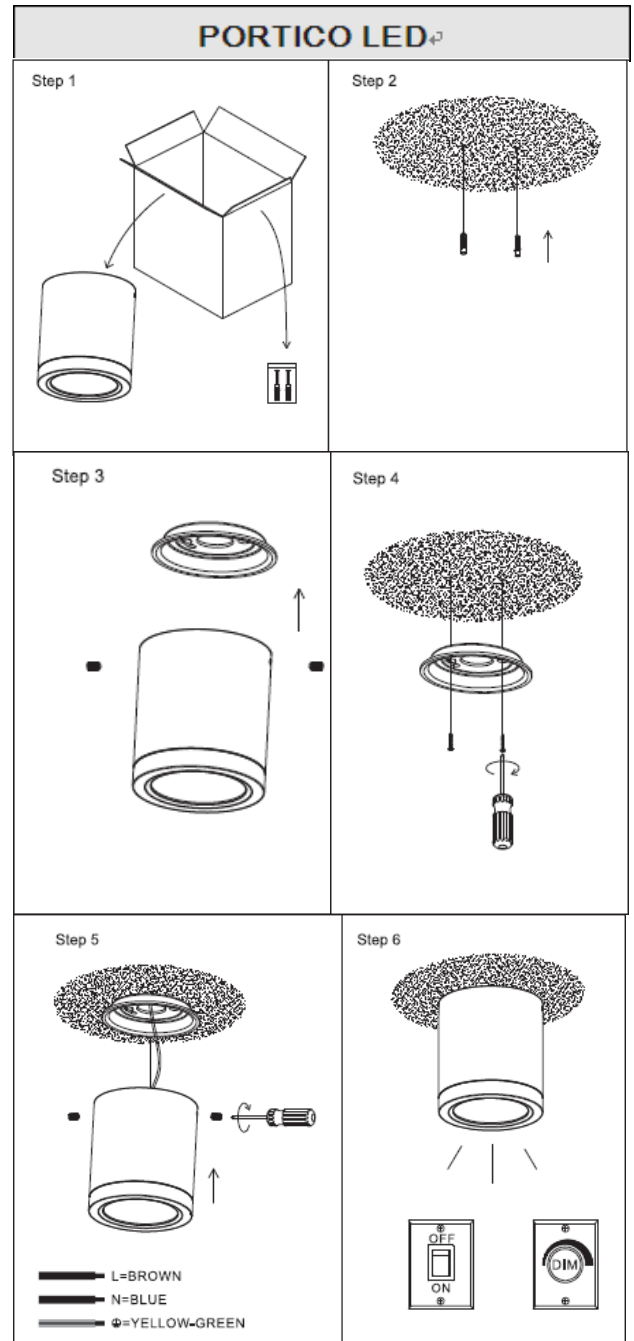
Ensure mains supply is switched off.

- Determine mounting location and knock the plastic anchors into ceiling. Fix the round bracket with screws into the ceiling (Fig. 2)
- Remove the bracket from the housing by unscrewing the side screws. (Fig. 3)
- Fix the mounting bracket to the ceiling with screws (Fig. 4).
- Connect the fitting to its electrical source using the terminal block provided
Brown (Live) - to Brown or Red
Blue (Neutral) - to Blue or Black
Green/Yellow (Earth) - to Green/Yellow or Copper. (Fig. 5)
- Re-attach the housing to the ceiling bracket, turn on mains supply.

PLEASE NOTE: applicable for concrete ceiling or wooden ceiling installation only.

WARNING:

- Ensure all items and screws are secure and fitted correctly.



Spazio Lighting (Pty) LTD.

JOHANNESBURG OFFICE: 52 Andries Street | Wynberg/Sandton
CAPE TOWN OFFICE: 36 Milner Street | Paarden Eiland
DURBAN OFFICE: 31 Solstice Road | Umhlanga Ridge
011 555 5555 (Central Switchboard) | info@spazio.co.za