



COAST

COAST TPH25R HEADLAMP

INSTRUCTIONS

USING THE HEADLAMP

The TPH25R was designed with a COAST Pure Beam® optic with a three-setting lighting sequence. Use the Quick-Cycle™ switch system to cycle through medium, high, and low brightness settings by repeatedly pressing the power button.

ADJUSTING THE BEAM

Equipped with Twist Focus™ technology, the TPH25R can be continuously adjusted between an ultra view flood beam and a Bulls-Eye™ spot beam. To pinpoint the beam on a precise area, rotate the bezel clockwise. To expand the beam and maximize the lighting area, rotate the bezel counterclockwise.

MAGNETIC ENDCAP

The TPH25R can be removed from the bracket and mounted to any magnetic surface by the magnetic endcap. To mount the TPH25R, pull it free from the brackets. Activate the desired brightness setting, adjust the beam as needed, and secure the TPH25R to a magnetic surface.

ADJUSTING THE BEAM ANGLE AND DETACHING THE HEADLAMP

While mounted to the headstrap, the headlamp can be shifted up or down

within the headlamp mount. The TPH25R can be used as a handheld flashlight by detaching the headlamp from the mount. To detach the headlamp, simply pull it out of the mount. To reattach the headlamp to the mount, center the headlamp over the bracket and press the headlamp back into place.

ATTACHABLE CLIP

To connect attachable clip, first remove the reflective head strap from the adjustable bracket. Insert clip prongs into the open square on the back of the adjustable bracket and press until the clip clicks into place. The clip can be inserted in any orientation to support use on pockets, hats, and straps. To remove the attachable clip, pull with firm, even pressure until the clip prongs release.

POWERING THE HEADLAMP

The TPH25R is powered by a COAST Zithion-X® rechargeable battery (included). To charge the Zithion-X® inside the TPH25R, rotate the power button housing counterclockwise and expose the Pro-Tek charging port. Insert the USB charging cable into the charging port and plug in the cable at an available power supply. To charge the

Zithion-X® directly, unscrew the magnetic endcap and remove the rechargeable battery from the battery compartment. Plug in the USB Charging Cable to the charging port on the Zithion-X®. Then plug in the cable at an available power source.

RECHARGEABLE-DUAL POWER

Designed with Rechargeable-Dual Power technology, the TPH25R can also be powered with a standard CR123 lithium battery (not included). To power the TPH25R with a standard lithium battery, open the battery compartment, as directed above. Remove the Zithion-X® rechargeable battery. Insert one new CR123 lithium battery into the battery compartment with the positive battery terminal oriented toward the power button, and close the battery compartment. CR123 lithium batteries are single-use only. Do not plug into a power source when powering the TPH25R with a CR123 lithium battery.

BATTERY LIFE INDICATOR

The power button also functions as a battery life indicator. When the power button is green, the battery is sufficiently charged. When the power button is red, it's time to charge the Zithion-X®, or install a new CR123 lithium battery. When the power button flashes red,

the battery has reached its lowest power limits and must be charged or changed immediately.

MAINTENANCE

To clean your TPH25R, wipe the external body of the headlamp with a damp cloth.

Note: Do not submerge the TPH25R.

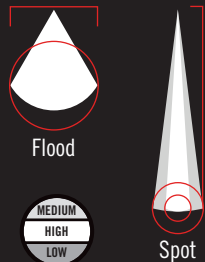
WARRANTY

For warranty information specific to your country, please visit: coastportland.com/warranty



PURE BEAM® FOCUS

FLOOD + SPOT



- 1 PURE BEAM® OPTIC
- 2 TWIST FOCUS™
- 3 POWER BUTTON + BATTERY LIFE INDICATOR
- 4 PRO-TEK CHARGING PORT
- 5 MAGNETIC ENDCAP
- 6 ADJUSTABLE HEADLAMP MOUNT WITH BRACKET
- 7 REFLECTIVE STRAP

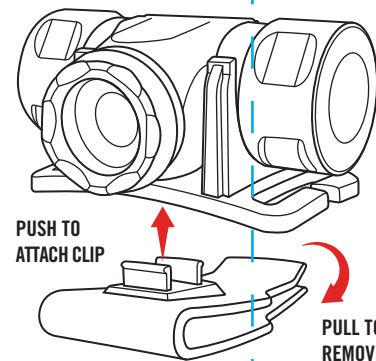
INCLUDED:



Zithion-X®
Rechargeable Battery



Attachable
Clip



PUSH TO
ATTACH CLIP

PULL TO
REMOVE CLIP