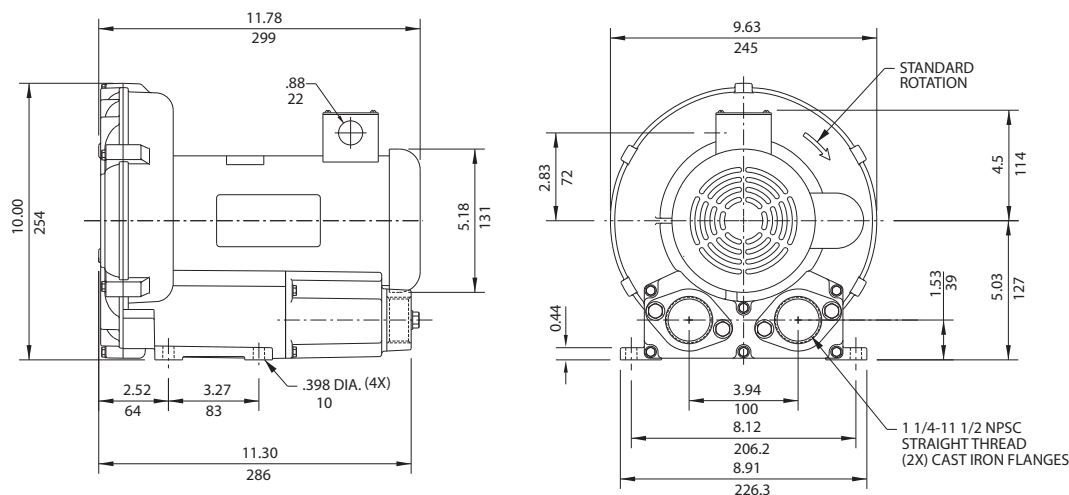


## DR 202 &amp; CP 202

.33 HP Regenerative Blower

IN  
MM

## NOTES

- 1 DRAWING NOT TO SCALE, CONTACT FACTORY FOR SCALE CAD DRAWING.
- 2 CONTACT FACTORY FOR BLOWER MODEL LENGTHS NOT SHOWN.

		Part/ Model Number				
Specification	Units	DR202Y9M 080564	DR202Y72M 080565	DR202Y86M 080566	CP202AE72MLR 038953	CP202FA91MLR 038227
Motor Enclosure - Shaft Mtl.	-	TEFC - CS	TEFC - CS	TEFC - CS	Chem TEFC - CS	Chem TEFC - SS
Horsepower	-	.33	0.33	0.33	0.33	0.33
Voltage	AC	115/230	230/460	575	230/460	230/460
Phase - Frequency	-	Single - 60 Hz	Three - 60 Hz	Three - 60 Hz	Three - 60 Hz	Three - 60 Hz
Insulation Class	-	F	F	F	F	F
NEMA Rated Motor Amps	Amps (A)	3.4/1.7	1.2/0.6	0.5	1.2/0.6	1.2/0.6
Service Factor	-	1.35	1.35	1.35	1.35	1.35
Max. Blower Amps	Amps (A)	5.2/2.6	1.54/0.77	0.57	1.54/0.77	1.54/0.77
Locked Rotor Amps	Amps (A)	16.4/8.2	6.4/3.2	2.6	6.4/3.2	6.4/3.2
NEMA Starter Size	-	00/00	00/00	00	00/00	00/00
Shipping Weight	Lbs	30	30	30	30	30
	Kg	13.6	13.6	13.6	13.6	13.6

**Voltage** - ROTRON motors are designed to handle a broad range of world voltages and power supply variations. Our dual voltage 1 phase motors are factory tested and certified to operate on both: **104-115/208-230 VAC-1 ph-60 Hz** and **100-110/200-220 VAC-1 ph-50 Hz**. All voltages above can handle a  $\pm 10\%$  voltage fluctuation. Special wound motors can be ordered for voltages outside our certified range.

**Operating Temperatures** - Maximum operating temperature: Motor winding temperature (winding rise plus ambient) should not exceed 140°C for Class F rated motors or 120°C for Class B rated motors. Blower outlet air temperature should not exceed 140°C (air temperature rise plus inlet temperature). Performance curve maximum pressure and suction points are based on a 40°C inlet and ambient temperature. Consult factory for inlet or ambient temperatures above 40°C.

**Maximum Blower Amps** - Corresponds to the performance point at which the motor or blower temperature rise with a 40°C inlet and/or ambient temperature reaches the maximum operating temperature.

*This document is for informational purposes only and should not be considered as a binding description of the products or their performance in all applications. The performance data on this page depicts typical performance under controlled laboratory conditions. AMETEK is not responsible for blowers driven beyond factory specified speed, temperature, pressure, flow or without proper alignment. Actual performance will vary depending on the operating environment and application. AMETEK products are not designed for and should not be used in medical life support applications. AMETEK reserves the right to revise its products without notification. The above characteristics represent standard products. For product designed to meet specific applications, contact AMETEK Technical & Industrial Products Sales department.*

.33 HP Regenerative Blower

**FEATURES**

- Manufactured in the USA - ISO 9001 and NAFTA compliant
- CE compliant - Declaration of Conformity on file
- Maximum flow: 52 SCFM
- Maximum pressure: 40 IWG
- Maximum vacuum: 35 IWG
- Standard motor: 0.33 HP, TEFC
- Cast aluminum blower housing, impeller & cover; cast iron flanges (threaded)
- UL & CSA approved motor with permanently sealed ball bearings
- Inlet & outlet internal muffling
- Quiet operation within OSHA standards

**MOTOR OPTIONS**

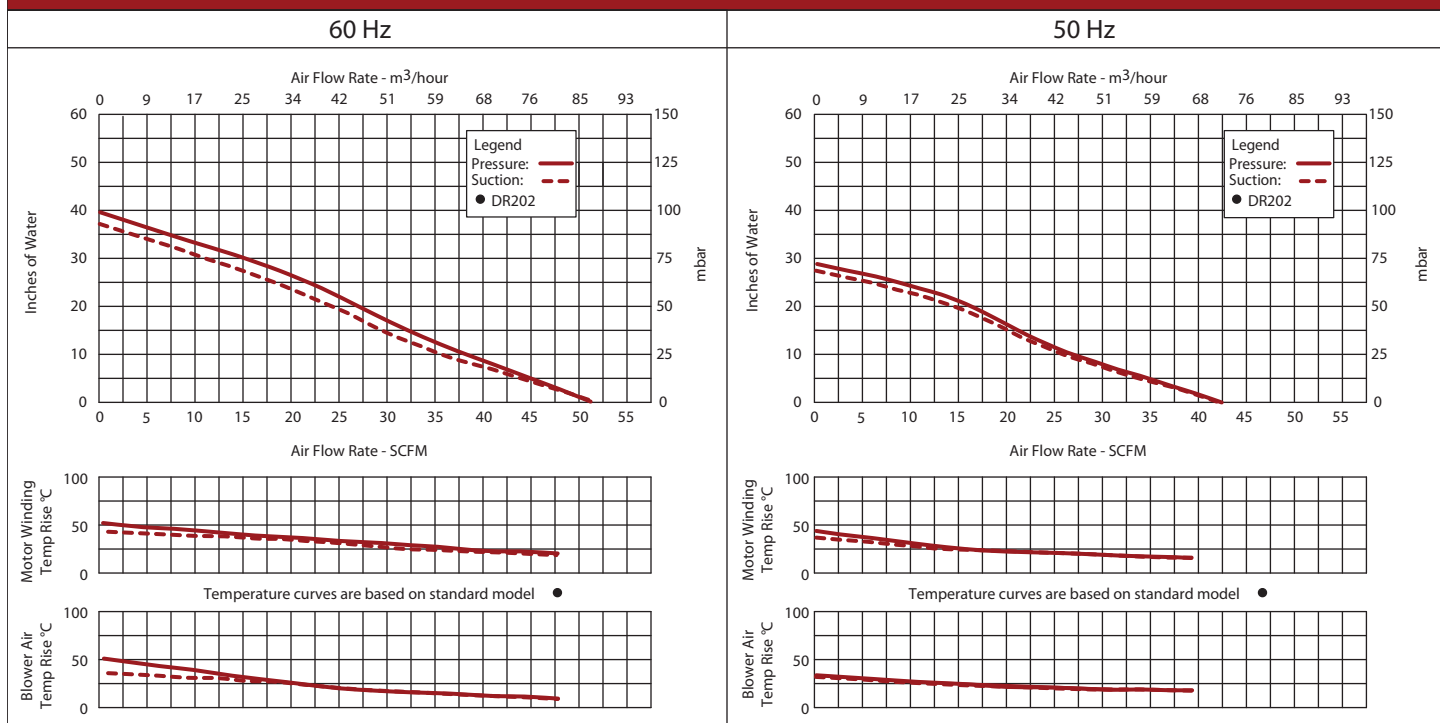
- International voltage & frequency (Hz)
- Chemical duty, high efficiency, inverter duty or industry-specific designs
- Various horsepower for application-specific needs

**BLOWER OPTIONS**

- Corrosion resistant surface treatments & sealing options
- Remote drive (motorless) models
- Cast iron (threaded) or face flanges for application-specific needs

**ACCESSORIES**

- Flowmeters reading in SCFM
- Filters & moisture separators
- Pressure gauges, vacuum gauges, & relief valves
- Switches - air flow, pressure, vacuum, or temperature
- External mufflers for additional silencing
- Air knives (used on blow-off applications)
- Variable frequency drive package

**Blower Performance at Standard Conditions**

This document is for informational purposes only and should not be considered as a binding description of the products or their performance in all applications. The performance data on this page depicts typical performance under controlled laboratory conditions. AMETEK is not responsible for blowers driven beyond factory specified speed, temperature, pressure, flow or without proper alignment. Actual performance will vary depending on the operating environment and application. AMETEK products are not designed for and should not be used in medical life support applications. AMETEK reserves the right to revise its products without notification. The above characteristics represent standard products. For product designed to meet specific applications, contact AMETEK Technical & Industrial Products Sales department.

AMETEK DYNAMIC FLUID SOLUTIONS

75 North Street, Saugerties, NY 12477

USA: +1 215-256-6601 - Europe: +49 7703 930909 - Asia: +86 21 5763 1258

Customer Service Fax: +1 215.256.1338

www.ametekdfs.com