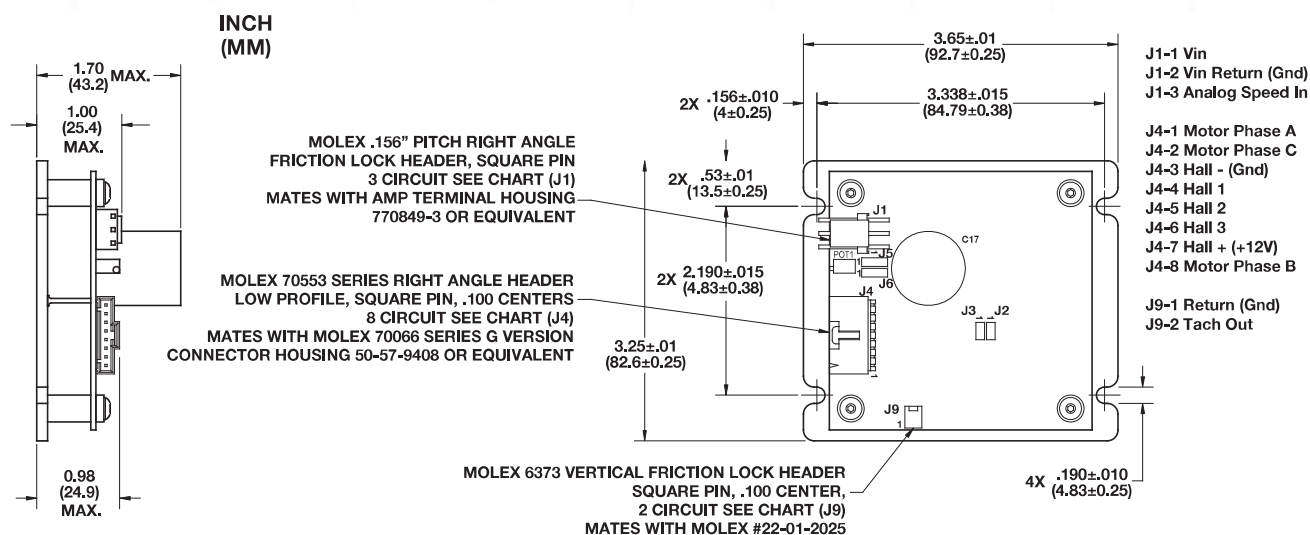


## 5 Amp BLDC Motor/Blower Controller



Controller Data	Motor/Blower Controller
	48132*
Maximum Continuous Current	5 A
Input Voltage Range	11-52 VDC
Controller PWM Frequency	25 kHz
Analog Speed Input	0-5 VDC
Electrical Hall Spacing	60° or 120°
Waveform	6-Step Trapezoidal
Current Limit Protection	Yes
Rotation	CW / CCW

\*These part numbers are available through AMETEK Technical & Industrial Products distributors.

### NOTES:

- **Temperature:** Operating: 0°C to 50°C, Storage Air: -40°C to 85°C.
- **Speed Control:** Electrical speed control is achieved by applying a 0 to 5 VDC signal on J1 Pin 3 with respect to J1 Pin 2. Mechanical speed control is achieved by adjusting the potentiometer when J6 is in position 1 to 2.
- **Current Control:** 5 Amp RMS maximum.

**Caution should be taken. Misplacement of jumper setting will destroy the control.**

### Jumper Settings:

J2-Motor Sensor Spacing: 120° electrical spacing with jumper connected (default).  
60° electrical spacing with jumper disconnected.

J3-Rotations: Clockwise rotation with jumper connected (default).  
Counter-clockwise rotation with jumper disconnected.  
Do not change while motor is running or damage will occur.

J5-Input Voltage: Position 1-2 for 16-52 VDC (default).  
Position 2-3 for 11-16 VDC.

J6-Speed Control: Position 1-2 for internal speed adjust, via on board potentiometer (default).  
Position 2-3 for analog speed input, via 0-5 VDC signal applied to J1 pins 2 and 3.

J9: F out provides a 0-12 VDC square wave to monitor speed

$$F_{out} \text{ (Hz)} = \left( \frac{\text{Motor RPM}}{120} \right) \left( \frac{\text{Motor}}{\text{Poles}} \right)$$