



Medium Ivy Leaf

Hope you enjoy this PDF.

ANGEL POLICY - You are most welcome to sell anything you make from any of our tutorials.

Thank you.

You will need a felting surface and a needle, my favourite is the flatmat and my go to needle is the 40 spiral.

A set of pocket scales and a pair of sharp scissors will also be handy too.

Materials Used

Emerald	0.4 grams
Buttercream	0.65grams
24 swg wire	1
Pipe Cleaner	1
Florist tape	15 cm

Weights & Size are approx.

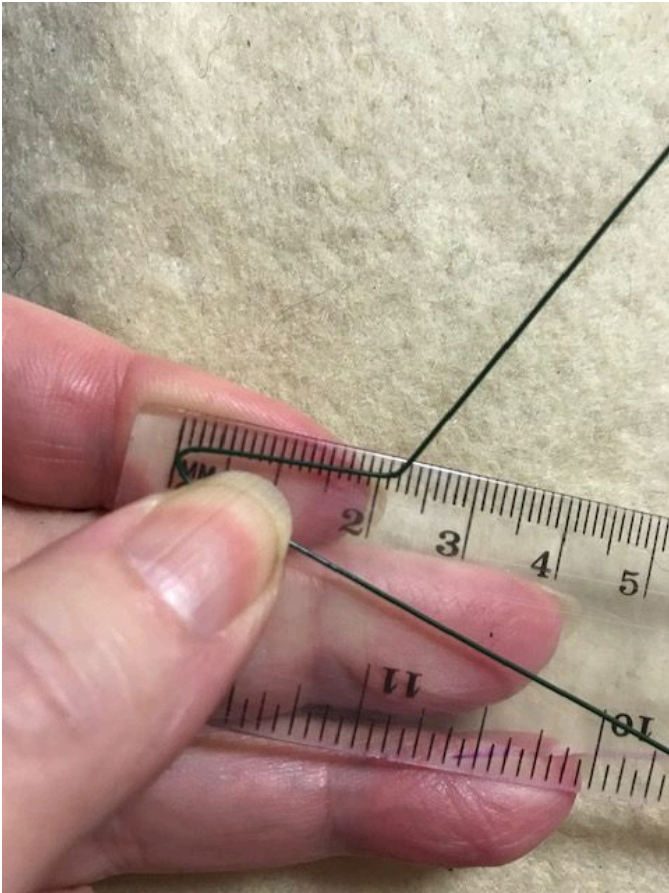
For this medium sized variegated ivy leaf I have used 0.4 grams of Emerald, 0.6 grams of Buttercream with approximately 0.1 gram of Buttercream for the vein detail.

It may be helpful to read through the instructions before you start to make the leaf.



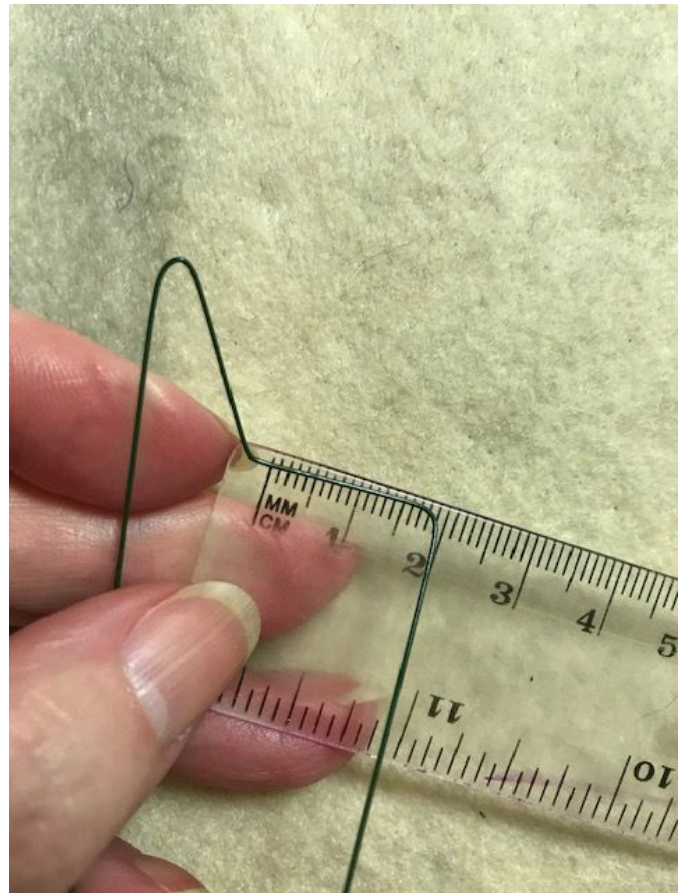
The armature is a 24 swg wire.

I first bend the wire at 10 cm.

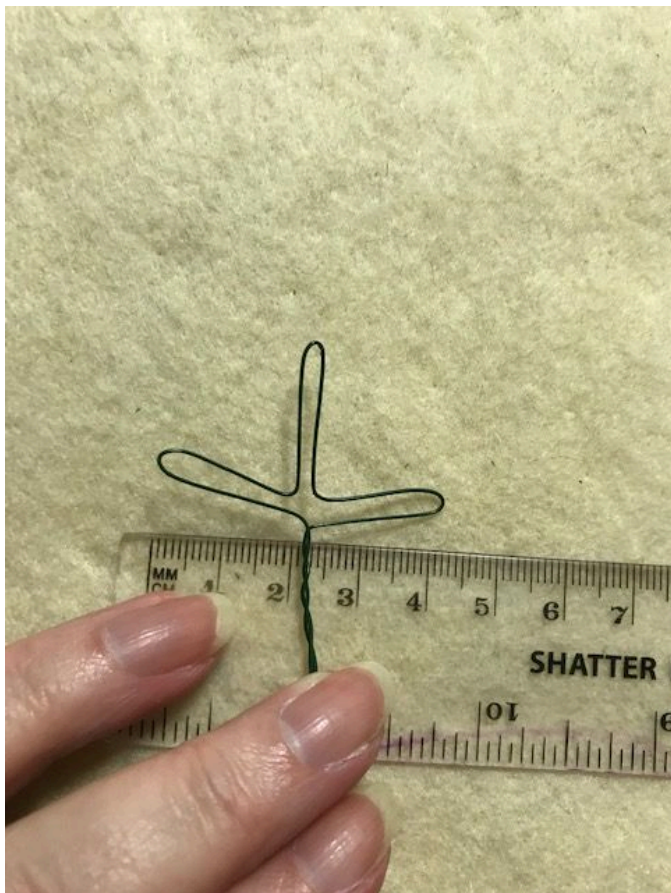
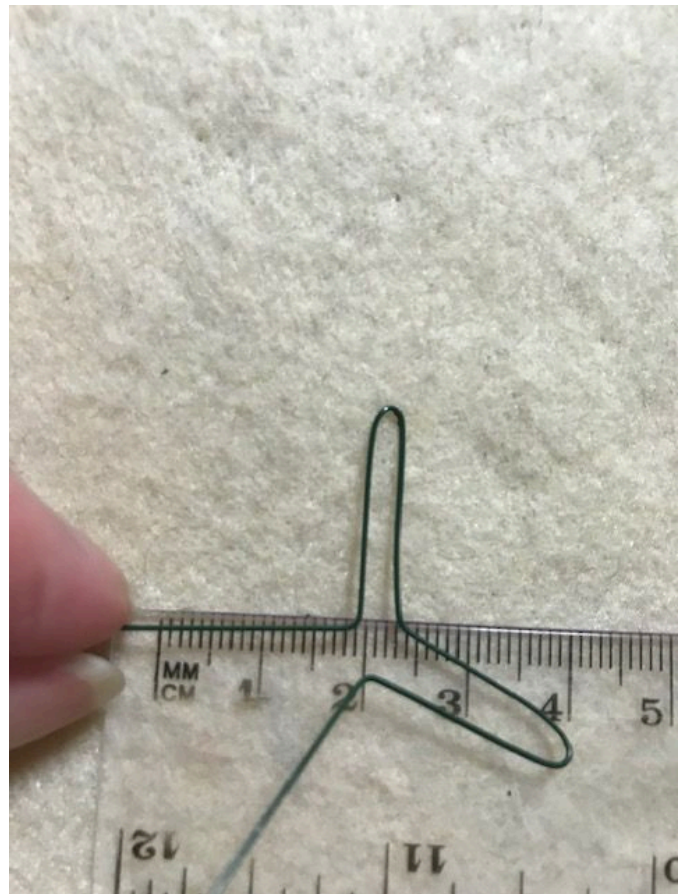


Then make a bend down the side at 2 cm.

Again bend at 2 cm.



Then repeat on the other side.



Join the wires together at the bottom and twist them together.

Then set this aside for later.

Put the template on your felting surface and place approximately 0.4 grams of the Buttercream wool all around the edge



Then with approximately half of the Emerald lay it down in the center of the template.

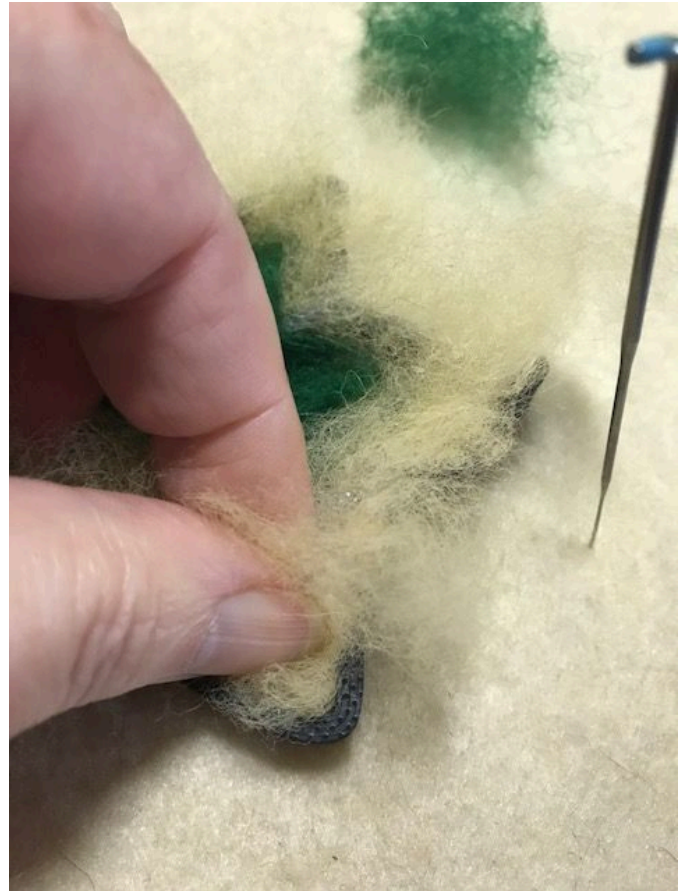


Place the wire into the template.

Take 0.5 grams of the remaining Emerald and anchor the wire in place.



Now start to gently fold the buttercream wool over and felt it in place.



When you have gone all the way around use 0.5 grams of the remaining Emerald to soften the colour change on this side.



I know it looks like a hot mess but keep believing it will work.

Turn the whole leaf over.

This side now needs some attention.



Gently with my needle I have started to move some of the fibres away from the center of the leaf.



Take the leaf out of the template and take your punch tool, if you have one, and with a driving motion push the fibres into and through to the other side.

Do be careful as there are wires in there and you can break your needles.

If you don't have a punch tool you can still do this with a single needle or hold two together, it will just take longer to achieve the end result.



Repeat the driving motion on the other side, you may need to repeat this a few times, then pop it back into the template.

You will notice that it has grown a little so it will need to be squished to fit in.

You still have some wool leftover so we will use this to tidy up the edges and make the colour fade even.



Pop a bit more of the green in the center on both sides.



Then place the Buttercream around the edges where it may be a bit thin.

You can use the punch tool again just to blend the extra colour that has just been added.



Pop the leaf back into the template and firmly felt this all over from both sides.

Keep turning it over and felt it as firmly as you can.

Use shallow stabs then you aren't pushing the fibres out the otherside.



After lots and lots of stabbing I am now happy with how my leaf is looking, this is one side...



...and this is the other.



To make the veins I have taken a thin strand of Buttercream and anchored it at the tip of the middle point.

Then twist that strand between my fingers so that I get a nice neat straight line.

Do this for each vein.

With that done you can now iron your leaf to make it thinner and smoother.

To do this put your iron on its highest setting with the steam on.

Press the iron onto the leaf wiggle and lift, turn the leaf over and repeat.

Then trim any stray fibres from the edges with a sharp pair of scissors.



To cover the wire I have 10 cm of pipe cleaner and some florist tape.

Twist the pipe cleaner around the wire and then cover that with the florist tape.



TaDa.

One finished Variegated Ivy leaf.

Please share your makes on our facebook page the details are below.



Come join us and share your makes in our fun and fluff filled Facebook Group
www.facebook.com/groups/mumsmakery

Or search for
Mum's Makery - A Needle Felting Group