



Trio of Ivy Leaves

Hope you enjoy this PDF.

ANGEL POLICY - You are most welcome to sell anything you make from any of our tutorials.

Thank you.

You will need a felting surface and a needle, my favourite is the flatmat and my go to needle is the 40 spiral.

A set of pocket scales and a pair of sharp scissors will also be handy too.

Materials Used

Evergreen	3 grams
Buttercream	0.6 grams
24 swg wire	3
Pipe cleaner	1
Florist tape	45 cm

Weights & Size are approx.

Template	Main colour	Accent
Small	0.5 grams	0.1 gram
Medium	1 gram	0.2 grams
Large	1.5 grams	0.3 grams

For this demonstration I am using the medium template but the process is the same for each of the templates.

I have 1 gram of Evergreen wool and I split this in half.



Take small amounts of wool from one half to fill in the points of the template and use the last of this half to fill in the center.

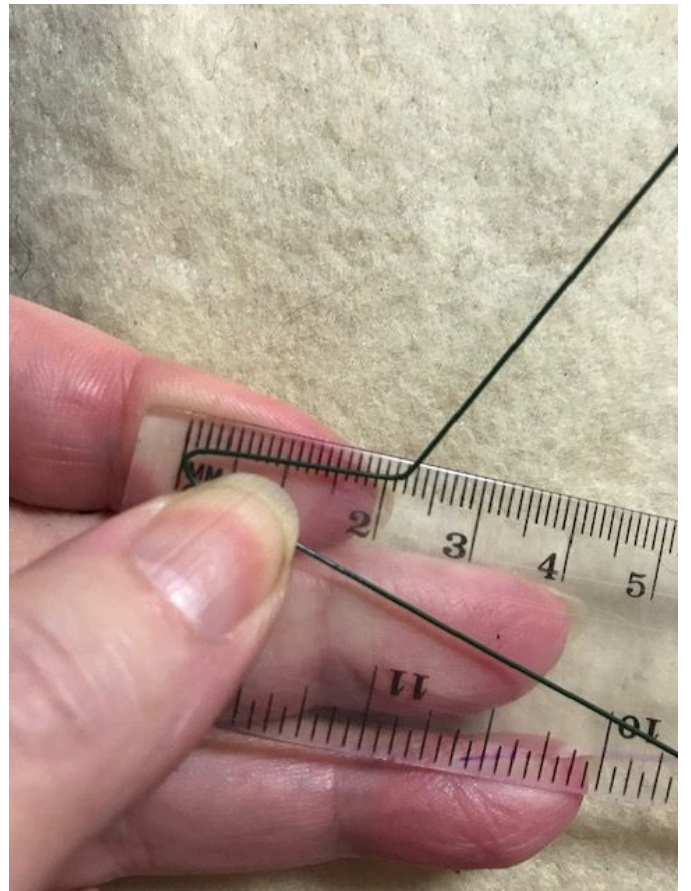
Felt this all over from both sides.



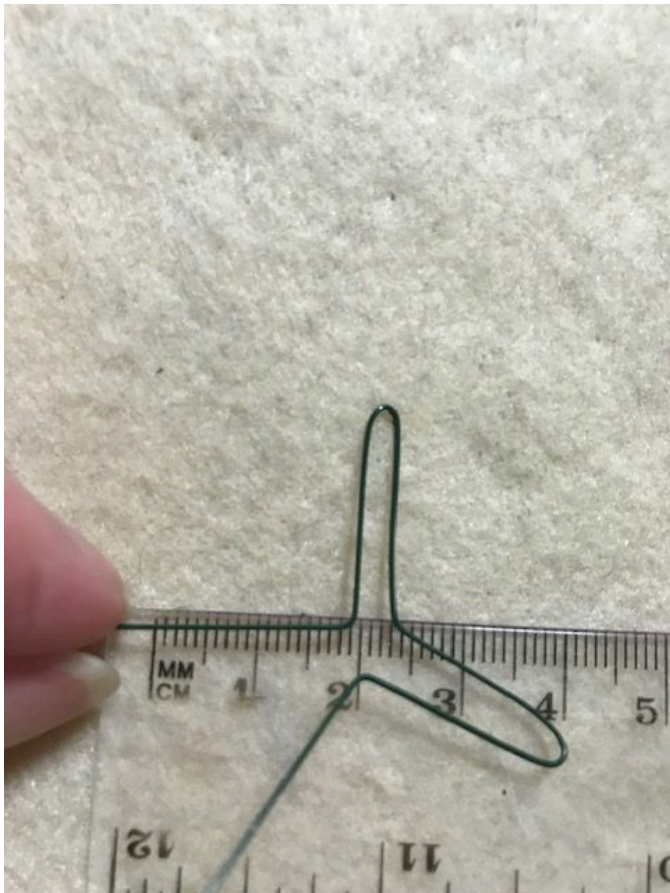
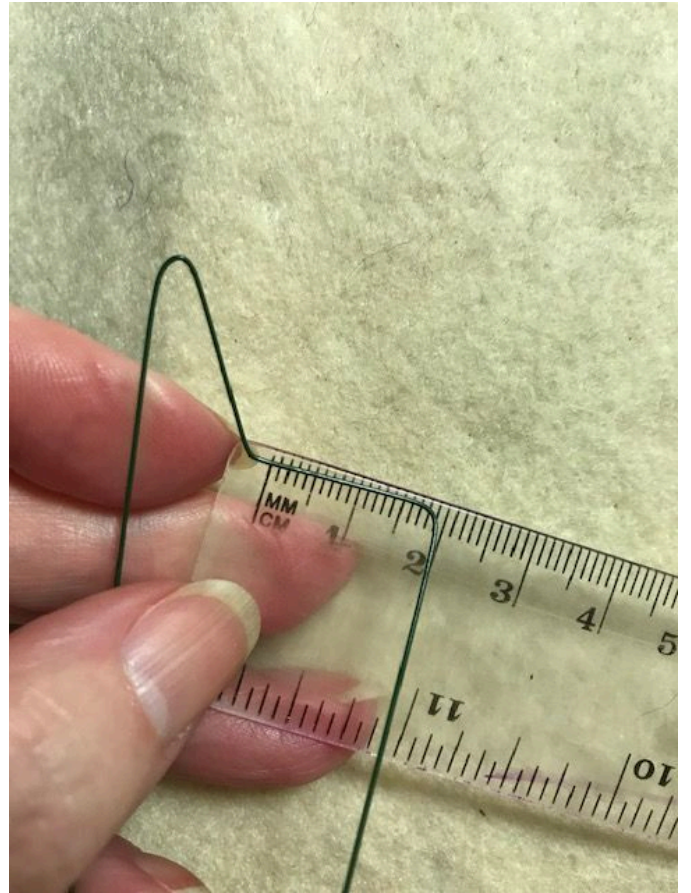
Then take one of the wires to make your armature.

I first bend the wire at 10 cm.

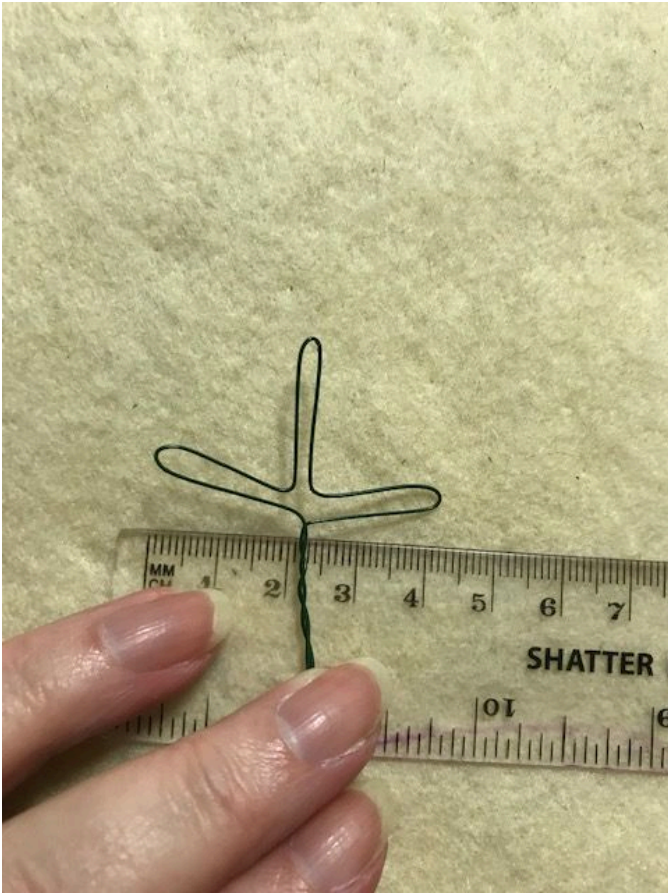
Then make a bend down the side at 2 cm.



Again bend at 2 cm.



Then repeat on the other side.



Join the wires together at the bottom and twist them together.

Make sure that it fits inside the template.





The armature is the same for each of the templates, just adjust the size accordingly to fit each template.

The overall size turns out approximately 4 cm by 3 cm.



Now place the wire in the template.



Take the second half of the wool and take some pinches of it to anchor down the wire.

Use some more to cover any thin patches that you may have, leaving a small amount that will make a flat sheet to cover the leaf.

Firmly felt this from both sides.



With the small amount you have left, make it into a thin sheet and smooth this out between your hands.

Cover the leaf and then pop the template back over the leaf.

Felt this firmly.



Turn the template over and fold the loose wool onto the back and felt it down.



Spend a little time to make sure that it is firmly felted.



I have used Buttercream for the accent colour.

So with approximately 0.2 grams drafted out into thin threads I anchor one end onto the leaf.

To make a nice straight line twist the thread between your fingers and lay that down on the surface and felt it down.

You can make any pattern of veins that you want.

With that done you can now iron your leaf to make it thinner and smoother.

To do this put your iron on its highest setting with the steam on.

Press the iron onto the leaf wiggle and lift, turn the leaf over and repeat.

Then trim any stray fibres from the edges with a sharp pair of scissors.



To cover the wire I have 10 cm of pipe cleaner and some florist tape.



Twist the pipe cleaner around the wire and then cover that with the florist tape.



TaDa.

There you have an Ivy leaf.

Here are all of the three sizes together.



Please share your makes on our facebook page the details are below.



Come join us and share your makes in our fun and fluff filled Facebook Group
www.facebook.com/groups/mumsmakery

Or search for
Mum's Makery - A Needle Felting Group