



AUTUMN LEAF WREATH

Hope you enjoy this PDF.

ANGEL POLICY - You are most welcome to sell anything you make from any of our tutorials.

Thank you.

You will need a felting surface and a needle, my favourite is the flatmat and my go to needle is the 40 spiral.

A set of pocket scales and a pair of sharp scissors may also be handy too.

Below is a table which shows you the exact colours that I have used.

However this is just a guide and you can use whatever you want to.

Materials Used

Natural Linen	3 grams
Burnt Orange	2.25 grams
Mustard	2.35 grams
Cranberry	0.6 grams
Warm Brown	1.75 grams
Ginger	0.9 grams
Lichen	2.2 grams
Evergreen	5.1 grams
Fox	0.85 grams
Autumn Green	2.15 grams
Dark Brown	0.2 grams
24 swg wire	8

Weights & Size are approx.

Template	small	medium	large
Red Oak Leaf Small 0.8 grams Medium 1.5 grams Large 2.2 grams	0.4 g Evergreen 0.4 g Lichen Veins Lichen	1 g Burnt Orange 0.5 g Mustard Veins Lichen	1.5 g Evergreen 0.5 g Warm Brown 0.2 g Lichen Veins Evergreen
Oak Leaf Small 0.5 grams Medium 1 gram Large 1.5 grams	0.2 g Burnt Orange 0.2 g Mustard 0.1 g Cranberry Veins Cranberry	0.5 g Evergreen 0.25 g Lichen 0.25 g Warm Brown Veins Dark Brown	0.75 g Autumn Green 0.75 g Mustard Veins Ginger
Ivy Leaf Small 0.5 grams Medium 1 gram Large 1.5 grams	0.5 g Evergreen Veins Dark Brown	0.35 g Lichen 0.65 g Evergreen Veins Warm Brown	0.85 g Burnt Orange 0.35 Cranberry 0.3 g Ginger Veins Mustard
Beech Leaf Small 0.4 grams Medium 0.8 grams Large 1.5 grams	0.2 g Burnt Orange 0.2 g Mustard Veins Cranberry	0.4 g Warm Brown 0.4 g Ginger Veins Mustard	1 g Lichen 0.5 g Evergreen Veins Evergreen
Rose Leaf (Rowan) 15 x 0.15 grams each	Half Fox Half Evergreen	-	-
Pussy Willow	0.10 g upto 0.2 g Natural Linen	-	-
Fern (Top) 1.4 grams	-	-	0.6 g Mustard 0.6 g Warm Brown 0.2 g Ginger
Fern (Bottom) 1.4 grams	-	-	1.4 g Autumn Green

Here is list of video tutorials on our youtube channel for several of the leaves and pussy willow that are freely available to watch

www.youtube.com/mumsmakery

Beech Leaves	No video
Oak Leaves	https://youtu.be/X-DQexGZW1c
Red Oak Leaves	No video
Fern	https://youtu.be/cPDCPlqjcG0
Ivy Leaves	https://youtu.be/Tfo6Meg_Lqk
Pussy Willow	https://youtu.be/87gKemGrfMU

Here I will briefly go over how to fill your templates, there are many videos on our YouTube channel that go into more in depth instructions.

<https://www.youtube.com/MumsMakery>

For this demonstration I will use the medium sized leaves but all the weights and measures for each size are on the table.

This is the Red Oak template and I have chosen colours from the shades of Autumn pack for this project.

These are Burnt Orange and Mustard.





I have hand blended these colours together to achieve the look that I wanted.

Now to fill the template I take small pinches and start to fill the pointy bits of the shape and then work my way into the middle.

Take some time to felt this all over until it is firm, especially the edges as you want them to keep their shape.



For the veins I have chosen Lichen.

There is no right or wrong way to place these, look at some pictures of the leaves to decide where you want to put them.

I start by drafting a small thin piece of wool and attach it to my leaf at the base.

Then start to twist the strand between your thumb and finger so that the wool tightens up and becomes a lovely neat straight piece of wool to felt down onto your leaf.



Here is my finished leaf.

I have used my scissors to trim any stray fibres from the edges.

You can at this point iron your leaf to make it smooth and thinner.

To do this put your iron on its highest setting with steam on.

Press the iron down on your leaf, wiggle and then lift, then trim any stray fibres with your scissors.

I have chosen not to iron mine.





Here are the three different sizes.



Now the Oak leaf.

[▶ Make Needle Felted Oak Leaves - Tutorial / ...](#)

Using Evergreen, Warm Brown and Lichen again hand blending the colours.

For the veins on this one I have used Dark Brown.



Here it is finished.





And the three sizes together all in different colours.



The Fern leaf is made with Warm Brown, Mustard and Ginger.

[▶ The Fern ~ Needle Felting Tutorial](#)

Take some time with this one.

Fill all the fern tips in but make sure that you don't miss the centre out as this holds it all together.

A good trick is to hold up your template up to the light as you fill it, then you can see any spots that need to have more wool in them.

It will take quite some time to firm up this one but it is well worth the work.



The Ivy leaf is Evergreen and Lichen.

[▶ Make Needle Felted Ivy - Full Tutorial / How To](#)





The set is all in different colours again.



Beech leaf with Ginger and Warm Brown hand blended.

The set all different colours.



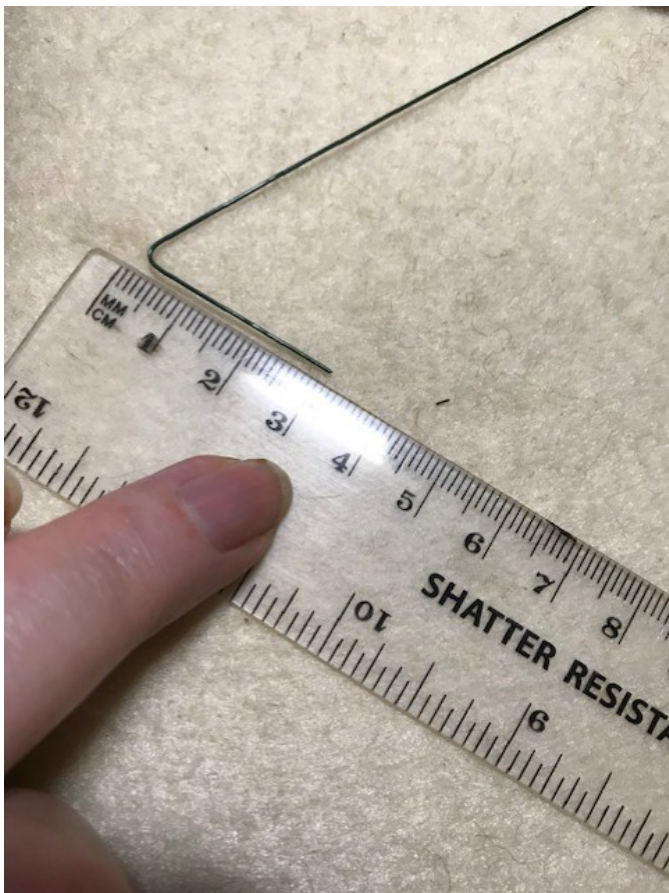
Now for the pussy willow.

You can watch the YouTube video if you want.
Here is the link.

[▶ Pussy Willow - Needle Felting Tutorial, How ...](#)

If not I will quickly run through it.





Take approximately 15 cm of 24swg wire and bend it at 3 cm.



Take a small amount of Natural Linen, anywhere between 0.1g and 0.2g and lay it over the bend in the wire.

Twist the wire tightly so that it pinches and traps the wool.



Wrap the wool around the wire and felt that into place.





So it looks like a large cotton bud.



With some brown florist tape activate it and start by sitting it straight behind the bud like a collar.

And twist it down the wire.

Then round off the collar with some scissors.



Make as many of these as you require, I have 8 of them.

Use one as a center piece and start to add the others.

Do this by placing one a little further down the center stem and twist the wires together.

Cover the two wires with a piece of florist tape.





For the next one come down a little and place it on the opposite side.

Again twist the wires together and repeat until you have used them all up.



One finished sprig of Pussy Willow.

I went and made another for my finished wreath.

Now for the last leaf.

I have used the template from the rose set.

The wool is Evergreen and Fox again hand blended.

To make the complete leaf I have one length of 24swg wire at 20 cm and 10 lengths of 7.5 cm.

Each of these have a loop on the end, this is to attach to the leaves.



Each leaf needs 0.15 grams of the mixed wool, of this I take half and felt that into the template.





Then I place the wire in the template and felt the rest of the wool on top, making sure that I felt inside the hoop and around the edge of the wire.



Now I repeat that 10 more times.

Each one has a small length of brown florist tape to cover the wire.

If you have made green leaves then there is no need to cover your wire.



Place the little leaves onto the longer wired leaf.

When you place the second one next to the first wind the wire the opposite way around the main wire.





Work your way down that main wire and hey presto here is your leaf.



Here is the collection of leaves that I have made for my Autumn Wreath.

To attach these to the wreath I have posted wires through the leaves that I have wound onto the wreath but if you want to you can glue them on.

I chose to wire them as I couldn't make my mind up where I wanted them and once glued on I couldn't change the position.



Here is my finished Autumn Wreath.

I made another Fern leaf and as I said before there is another Pussy Willow on there.



Please share your makes on our facebook page the details are below.



Come join us and share your makes in our fun and fluff filled Facebook Group
www.facebook.com/groups/mumsmakery

Or search for
Mum's Makery - A Needle Felting Group