



CP Range

Resettable Call Point

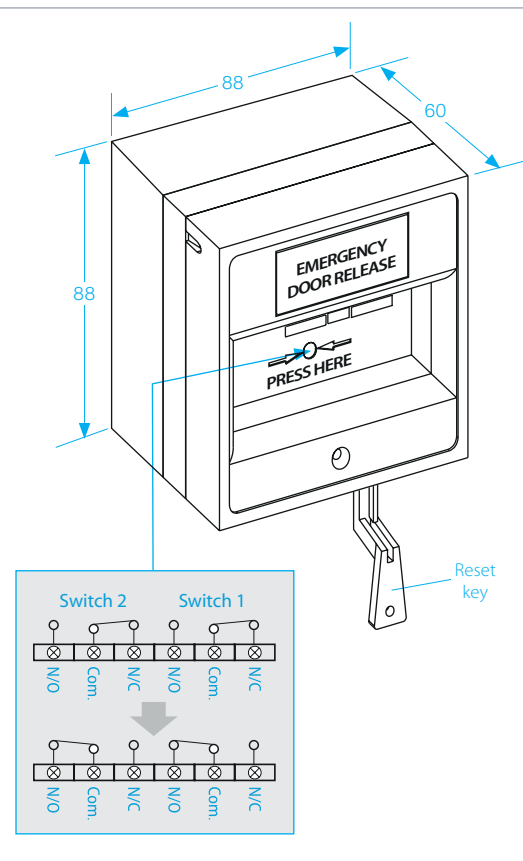
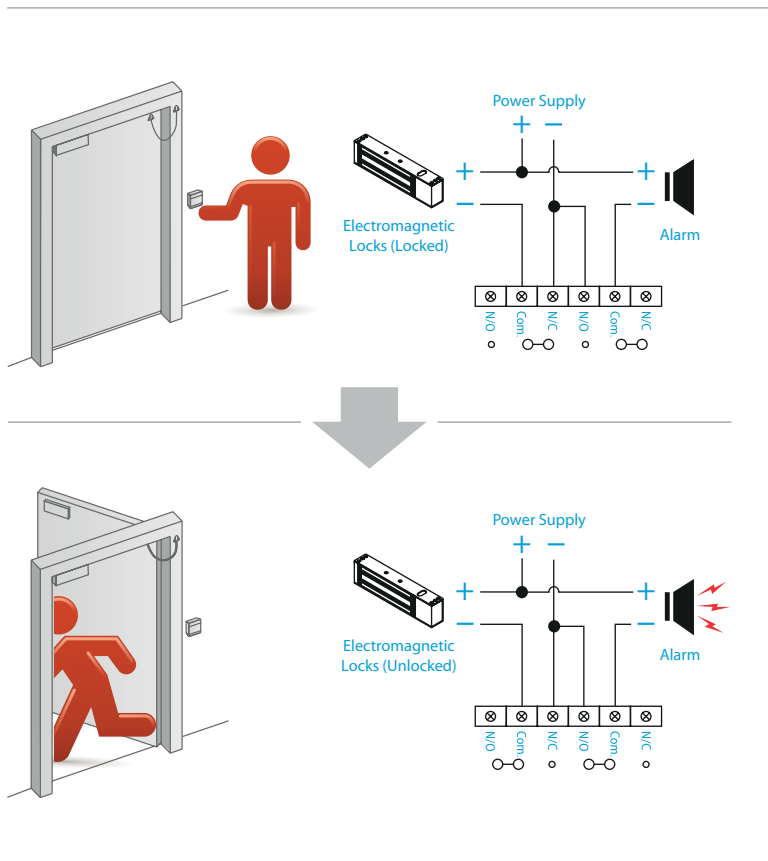
- Green plastic
- Resettable
- Surface mount



CP22

- 2 pole

<h4>CP22-N</h4> <ul style="list-style-type: none"> • 2 pole 	<h4>CP22-N-EDR</h4> <ul style="list-style-type: none"> • 2 pole 	<h4>CP22-3N</h4> <ul style="list-style-type: none"> • Triple pole 
<p>OPTIONS</p> <div style="display: flex; justify-content: space-around;"> <div data-bbox="159 1019 335 1120"> <p>CP22 Key</p>  </div> <div data-bbox="351 1019 526 1120"> <p>CP22-N Key</p>  </div> <div data-bbox="542 1019 718 1120"> <p>MX003-N</p>  </div> </div>		



SPECIFICATION

- COM / NO / NC Change-over-contacts x 2
- Contact resistance 150m
- Contact resistance 3A @125V~