

CP Range

Breakglass Call Point

- Green plastic
- Break glass
- Surface mount



CP15

- Single pole



CP24-G

- 4 pole



CP31G-UC

- 2 pole



OPTIONS

CP24-G Key



CP31G-UC Key



CP15-C Key



CP



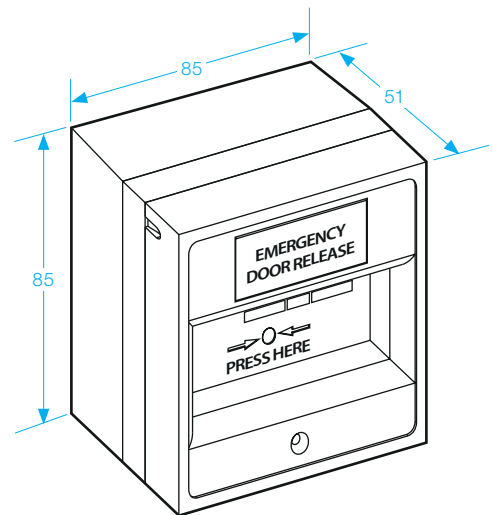
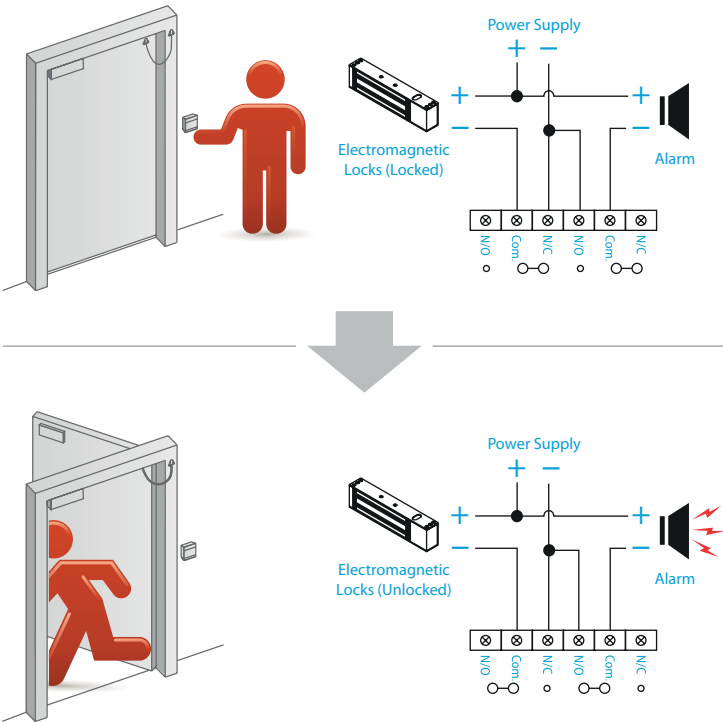
CP15 Cover



CP24-G Cover



CP31G-UC Cover



SPECIFICATION

- COM / NO / NC Change-over-contacts x 2
- Contact resistance 150m
- Contact resistance 3A @125Vac