


Basic Beats 1

Star Light



Star light star light first star I see to night

Zum Gali Gali (Israeli Work Song)




Zum gal - i gal - i gal - i zum gal - i gal - i

Shake with Me



Shake shake, shake with me jump up jump with me

Who Is That?




Who is that, tap-ping at the win dow? Who is that, knock ing at the door?

Who Is That?



Cobbler



Cobb-ler cobb-ler mend my shoe. Get it done by half past two.

Old Mac Donald



Old Mac Don -ald had a farm E I E I O

Brother John



Zum Gali Gali (Israeli Work Song)

Musical notation for 'Zum Gali Gali (Israeli Work Song)'. It features a treble clef and a 2/4 time signature. The melody consists of a sequence of eighth notes: G4, A4, B4, C5, B4, A4, G4, F4, E4, D4, C4. The lyrics 'Zum ga li ga li ga li Zum ga li ga li' are written below the notes.

Sea Shell

Musical notation for 'Sea Shell'. It features a treble clef and a 2/4 time signature. The melody consists of a sequence of eighth notes: G4, A4, B4, C5, B4, A4, G4, F4, E4, D4, C4, ending with a quarter rest.

One Two Three Four Five

Musical notation for 'One Two Three Four Five'. It features a treble clef and a common time signature (C). The melody consists of a sequence of eighth notes: G4, A4, B4, C5, B4, A4, G4, F4, E4, D4, C4.

Wee Willie Winkie

Musical notation for 'Wee Willie Winkie'. It features a treble clef and a 2/4 time signature. The melody consists of a sequence of eighth notes: G4, A4, B4, C5, B4, A4, G4, F4, E4, D4, C4. The lyrics 'Wee Will - ie Wink - le ran through the town____' are written below the notes.

Jack Be Nimble

Musical notation for 'Jack Be Nimble'. It features a treble clef and a 3/4 time signature. The melody consists of a sequence of eighth notes: G4, A4, B4, C5, B4, A4, G4, F4, E4, D4, C4. The lyrics 'Jack be nim - ble Jack be quick,' are written below the notes.

Vivace

Musical notation for 'Vivace'. It features a treble clef and a 3/4 time signature. The melody consists of a sequence of eighth notes: G4, A4, B4, C5, B4, A4, G4, F4, E4, D4, C4.

Con Moto

Musical notation for 'Con Moto'. It features a treble clef and a 3/4 time signature. The melody consists of a sequence of eighth notes: G4, A4, B4, C5, B4, A4, G4, F4, E4, D4, C4, ending with a double bar line and repeat dots.

Con Brio

Musical notation for 'Con Brio'. It features a treble clef and a 3/4 time signature. The melody consists of a sequence of eighth notes: G4, A4, B4, C5, B4, A4, G4, F4, E4, D4, C4, ending with a double bar line and repeat dots.

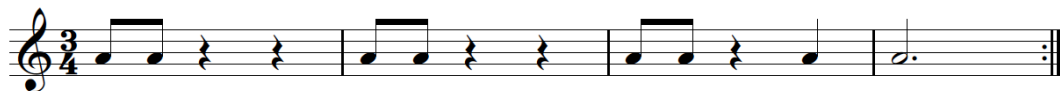
Lento

Musical notation for 'Lento'. It features a treble clef and a 3/4 time signature. The melody consists of a sequence of eighth notes: G4, A4, B4, C5, B4, A4, G4, F4, E4, D4, C4, ending with a double bar line and repeat dots.

pui mosso



Lento



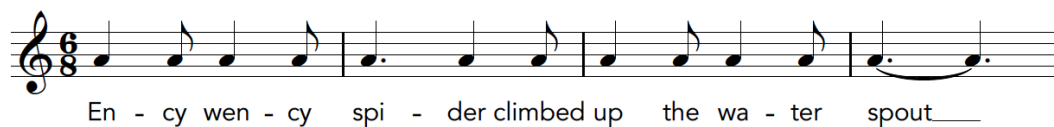
Andante



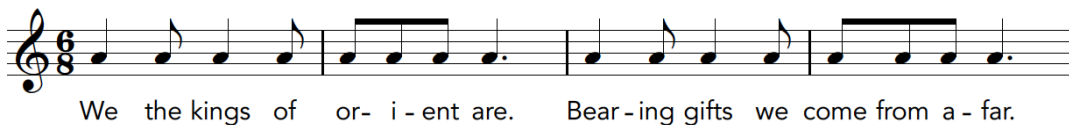
Andante



Ency Wency Spider



We The Kings



Upbeats rule



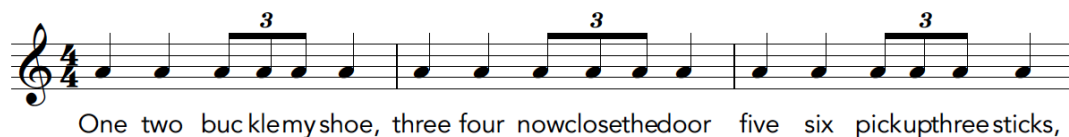
Vivace



Allegro



Con Moto



One two bucklemyshoe, three four nowclosethedoor five six pickupthreesticks,