



AIYIMA[®] AUDIO

AIYIMA[®] AUDIO

Mono / 2.0 Channel Stereo Amplifier
USER MANUALS

Model: A07 MAX

Shenzhen Yima Technology Co.,Ltd

Website: www.aiyima.com

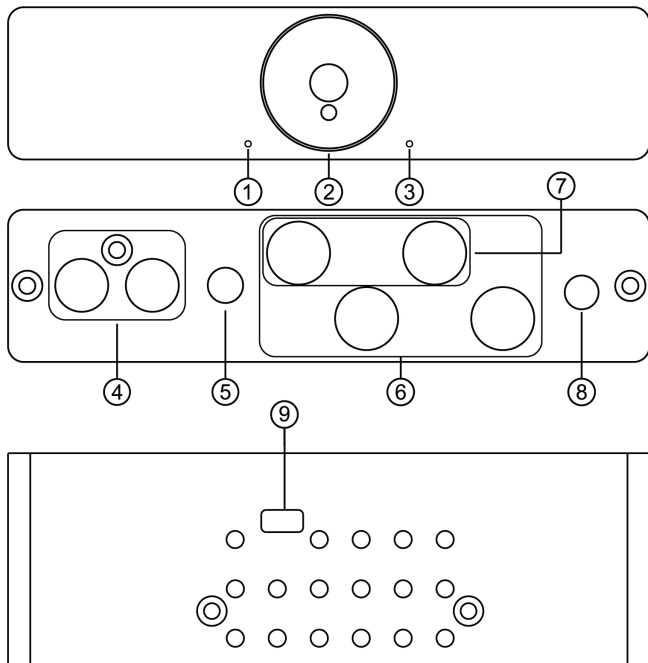
Email: sale@aiyima.com

Telephone: +86-755-28268551 / +86 13631584277

Location: 4Floor, Building C, Getailong Industrial Zone, No.227, Bulong Road, Bantian Street, Longgang District, Shenzhen

It is forbidden to place equipment waste marked with the symbol of a crossed-out trashbin together with other waste . This equipment is subject to collection and recycling .

Front & Back Surface Interface Instruction

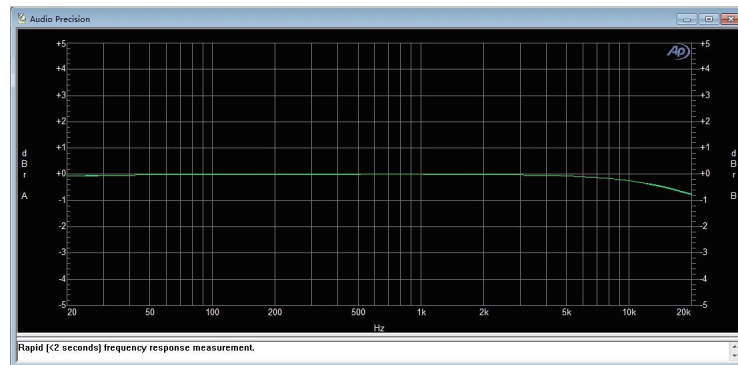


- ① ————— Mono mode indicator light
- ② ————— On/Off/Total Volume Control Knob
- ③ ————— Stereo mode indicator light
- ④ ————— RCA input(White/left channel, red/right channel)
- ⑤ ————— 3.5 AUX output
- ⑥ ————— Speaker interface
- ⑦ ————— Mono speaker interface(red/positive, black/negative; R connected to right speaker, L connected to left speaker)
- ⑧ ————— Power interface (DC voltage 24-48V)
- ⑨ ————— Mono/stereo mode switching

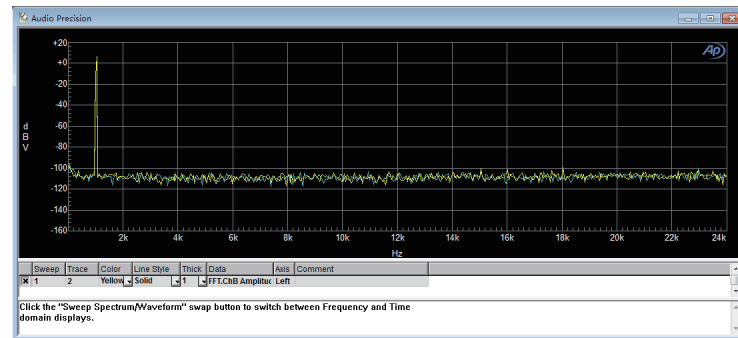
Operation Steps

1. Connect the passive speaker to the speaker interface.
2. Connect the audio source to be used to the RCA input port.
3. Connect the power supply (DC voltage range: 24-48V).
4. Switch the mono/stereo mode switch on the lower shell of the machine to select the desired mode for use.
5. Turn the on/off knob clockwise to start the machine and adjust to the appropriate volume.

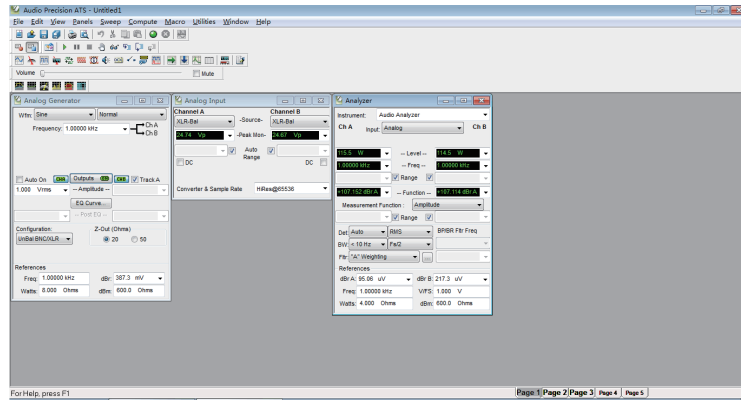
Frequency Response:



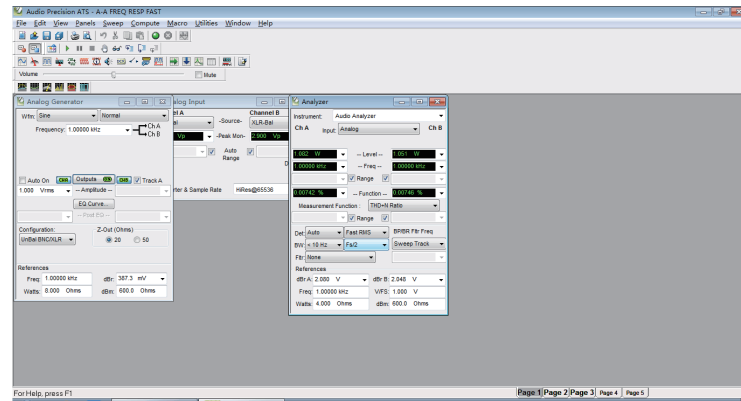
FFT:



SNR:



THD:

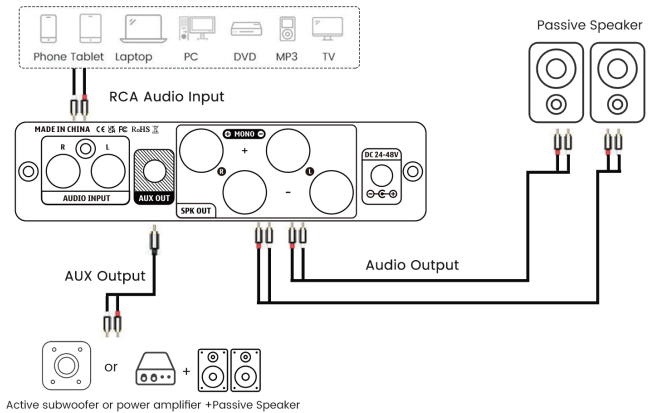


Measured Power:

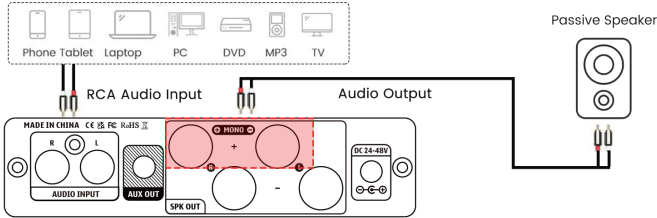
A07 Max			
Supply Power	Speaker Impedance	BTL Stereo	PBTL Mono
		Output Power	Output Power
24V 5A	4 Ω	68W*2	90W*1
	6 Ω	61W*2	66W*1
	8 Ω	55W*2	54W*1
32V 5A	4 Ω	78W*2	150W*1
	6 Ω	71W*2	120W*1
	8 Ω	65W*2	107W*1
36V 6A	4 Ω	107W*2	190W*1
	6 Ω	100W*2	150W*1
	8 Ω	94W*2	118W*1
48V 5A	4 Ω	120W*2	315W*1
	6 Ω	110W*2	220W*1
	8 Ω	102W*2	190W*1
48V10A	4 Ω	250W*2	315W*1
	6 Ω	210W*2	240W*1
	8 Ω	185W*2	190W*1

Connection Diagram:

1 Stereo Mode

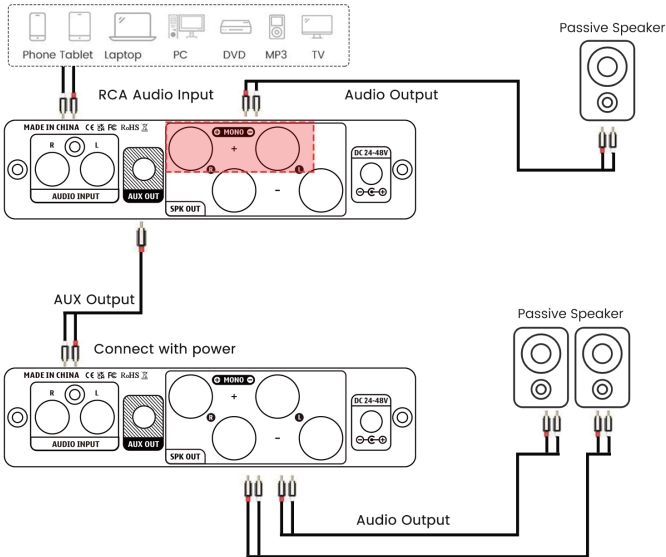


2 Mono Mode



Please switch the correct mode before connecting!

3 Mono Multiple Machines Mode



NOTE: 3.5mm as output connected to the next amplifier without volume control

Specification Parameter

Stereo Max Output Power	300Wx2 / 4Ω (48V/12A)	Working Voltage	DC 24-48V
BTL Max Output Power	600W / 2Ω (48V/12A)	THD	0.007%
Input sensitivity	1V	SNR	≥110dB
AUX Maximum Output level	1V	Package weight	1.27kg
Frequency response	20Hz-20KHz (±1dB)	Package size	L265*W240*H65 mm
Replaceable Op-Amp Chips	OPA2604AP, OPA2134, MUSEO1/02/03, LME49720NA, LM4562, AD827AQ, etc.		

Frequently Asked Questions

Q: All my cables are connected, but there is no sound output?

1. Check if the machine has started and if the indicator light is on.
2. Is the selection of mono/stereo mode and the connection of the speaker interface correct.
3. If the above two points are normal, check whether the playback device of the input sound source is paused, muted, or the volume is at the minimum.

Q: Why is the sound distorted?

1. The input level may be too large. If the volume of the sound source equipment is adjusted to the maximum, and the volume of the machine is also adjusted to the maximum, it is easy to be distorted. At this time, turn down the volume of the sound source input device or machine.

Q: Why does the volume of the machine remain the same, but the sound level is different when connecting to different audio sources (for example, connect a CD first, then a mobile phone)?

1. The amplitude of electrical signals output by different playback devices is different. For example, mobile phones are usually 0.35V, while CDs are 1V. The natural sound size is different.

Q: Why does the horn emit a loud electrical current sound or buzzing sound?

1. If you are not using the original standard power supply, please replace the power supply and test again. Many power supplies in the market have interference, which will cause current sound.

2. When the signal line without shielding is used, there will be interference signals entering the power amplifier for amplification. It is recommended that you replace the signal line with shielding.
3. There is still noise after troubleshooting the above two points, Please confirm the noise is from the external or the internal. Disconnect all inputs, only retain the power supply and output cable, if the noise disappears, that means the noise is from the audio input. If the noise is still there, the noise may be caused by interference with the power supply or generated inside the amplifier.

Q: Why there is no sound or very little sound after the amplifier is connected to the speaker?

- A: 1. Please check the audio source has been turned on and the volume is not at the minimum.
2. Please confirm whether the speaker and amplifier match (For example, the speaker is fixed resistance or fixed voltage, the power of speaker is too much over the power of the amplifier etc).

Q: What are the reasons for the unbalanced left and right volume of the speakers and how to eliminate them?

- A: Please check audio source, input cable, volume potentiometer (some amplifiers have balanced control or separate volume control of left and right channel), speaker cable, speakers (whether the position and the distance is symmetrical) and other factors.

Q: Why is there a thumping sound when swithing on/off?

- A: Please confirm the on-off sequence is correct, normally it follows the order of signal transmission when turn on: audio source → preamp / DAC → amplifier → speaker. (The sequence is reversed when switching off. As the internal capacitors will be discharged for a while after shutdown. If turn off the preamp firstly and then turn off amplifier, impact sound will be easily caused which may damage the amplifier or speaker in severe cases).

Warning

1. Please do not open the shell without permission. Improper operation may cause the danger of electric shock.
2. Please use the power supply of the regular manufacturer, otherwise it will damage the machine.
3. Please do not use the machine in a high temperature and humidity environment.

Product Warranty

If you have any questions about the goods you received, please contact us online within 48 hours Customer service. If the product has quality problems and needs to be repaired or returned, please fill in this card truthfully.

Username: _____

Contact number: _____

Date of purchase: _____

Product number: _____

Maintenance failure: _____

Note: The product warranty is 1 year

AIYIMA® AUDIO

Shenzhen Yima Technology Co.,Ltd