

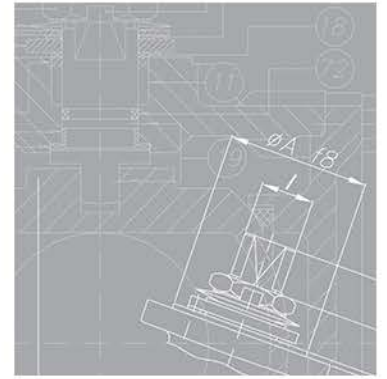
Technical Datasheet

ANSI Ball Valves

560B

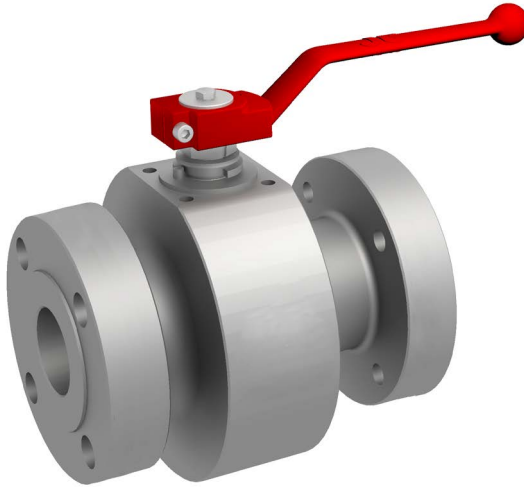
JC
VALVES

The quality option



sales@jc-valves.com

www.jc-valves.com



- Valve design: Full Bore API 6D
- Body design: ASME VIII Div.1
- Shell thickness: ASME 16.34
- Flanges: ASME B16.5 Raised Face
- Face to face dimensions: ASME B16.10 Long Pattern
- Marking: API 6D / CE- PED
- Fire Safe certification: ISO 10497
- Pressure testing: API 598 - API 6D
- Other: ATEX
- Shell finishing quality: MSS SP 55

Certifications

Company Certifications

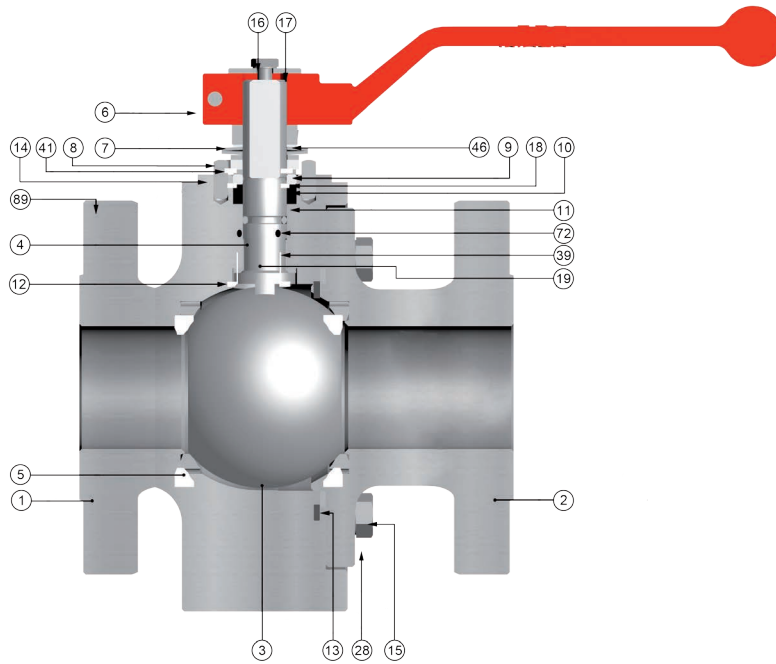
- ISO9001 Quality Management System
- ISO14001 Environmental Management System
- AD2000-Merkblatt W0/A4
- API Monogram License 6D-0197, 600-0016

Product Certificates

- Fire Safe API 607, ISO 10497, API 6FA
- PED 2014/68/EU - CE marking
- ATEX 2014/34/EU– (II2GD)
- Russian Federation Certificate TRCU 10, TRCU 12, TRCU 32
- Food processing and pharmaceutical industry FDA, USP CLASS VI COMPLIANCE (CE 1935/2004)
- Safety Integrity Level (SIL) LEVEL 3 IEC 61508
- CRN (Canadian Registration Number)
- Tanks for the transport of dangerous goods-Tank equipment for the transport of liquid chemicals and liquefied gases - Product discharge and air inlet valves EN 14432

ANSI Ball Valves

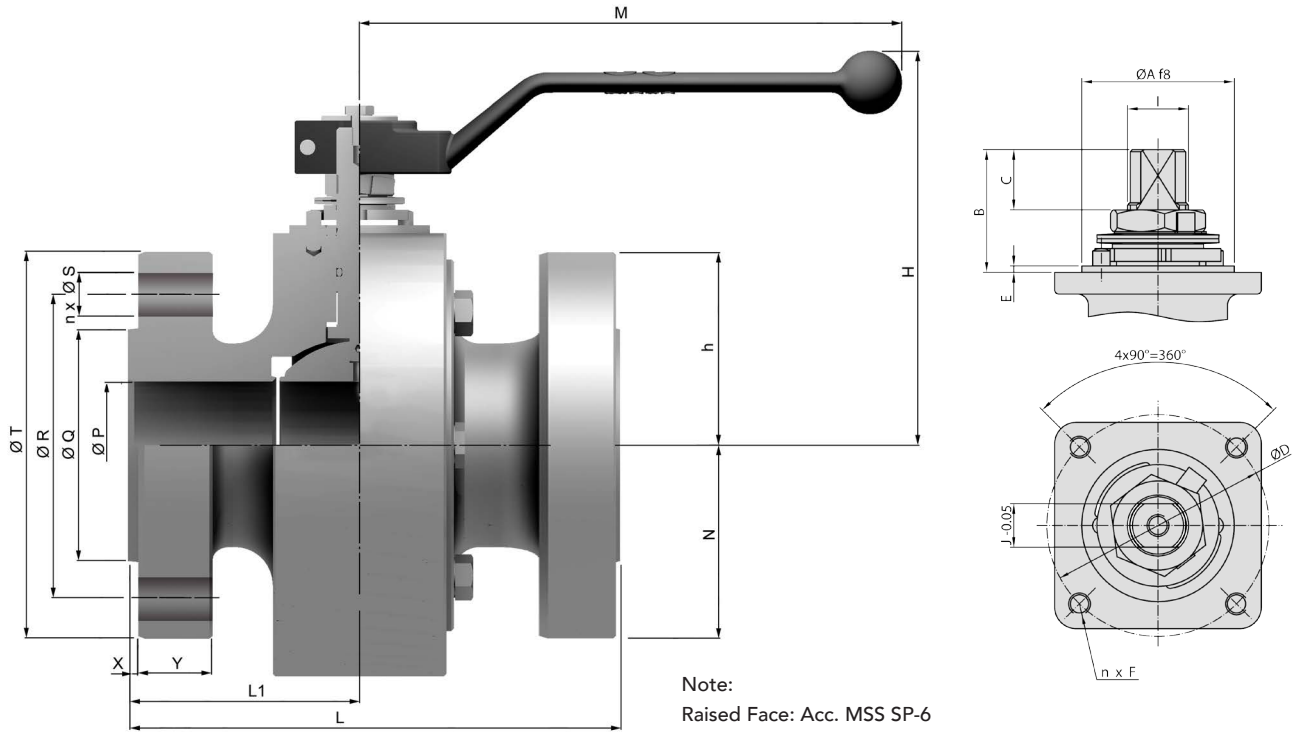
F l o a t i n g



Other materials upon request

Item	Description	Material		
		A.I.N.	I.I.N.	L.I.N.
1 / 2	Body / Body Connector	ASTM A105N	AISI 316	ASTM A 352 LF2
3	Ball	ASTM A 351 Gr. CF8M (DN 15 : 25 ASTM A 479 Tp.316)		
4	Stem	ASTM A 479 Tp.316		
5	Seat ring	NYLON		
6	Wrench	Nodular Iron		
7	Gland nut	Zinc plated carbon steel	AISI 303	
8	Disk spring	Carbon St.	A 666 TP.301	
9	Stop plate	Carbon St.	AISI 304	
10	Gland	AISI 303	AISI 316	
11	Gland packing	Graphite		
12	Stem thrust seal	25% G.F. PTFE		
13	Body connector seal	SPW AISI 316L + PTFE + Graphite		
14	Stop pin	Carbon St.	Stainless St.	
15	Bolt (DN 32 to DN 100 Stud)	A 193 Gr. B7M Zinc Dichromate	A 193 Gr. B8M	A 193 Gr. L7M Zinc Dichromate
16	Bolt	DIN 933 A2-70		DIN 933 A4-70
17	Washer	Zinc plated carbon steel	AISI 304	
18	Thrust washer	25% G.F. PTFE		
19	Antistatic device	Stainless St.		
28	Nut (DN 32 to DN 100)	A 194 Gr. 2HM Zinc Dichromate	A 194 Gr. 8M	A 194 Gr. 7M Zinc Dichromate
39	Stem bushing (DN 25 to DN 200)	25% G.F. PTFE		
41	Spacer (DN 40 to 200)	Carbon St.	AISI 304	
46	Washer	AISI 304		
72	O" Ring	FKM		
89	Identificaton Plate	Stainless St.		

ANSI Ball Valves Floating



Series 560B (Class 600)

DN	ØP	L	L1	ØQ	ØR	n x ØS	ØT	X	Y	h	H	M	N	WEIGHT	Kv
15	15,0	165	70,0	34,9	66,7	4x15,9	95,0	7,0	14,3	46,0	111	164	52,5	5,5	22
20	20,0	190	86,0	42,9	82,6	4x19,1	115,0	7,0	15,9	45,5	117	164	--	8	43
25	25,0	216	94,0	50,8	88,9	4x19,1	125,0	7,0	17,5	53,0	119	210	--	10	81
40	40,0	241	104,0	73,0	114,3	4x22,2	155,0	7,0	22,3	65,5	138	348	--	19	224
50	50,0	292	120,0	92,1	127,0	8x19,1	165,0	7,0	25,4	84,5	181	445	97,0	38	270
80	80,0	356	151,0	127,0	168,3	8x22,2	210,0	7,0	31,8	122,0	231	698	135,0	75	1000
100	100,0	432	172,0	157,2	215,9	8x25,4	275,0	7,0	38,1	139,0	248	698	150,0	120	1650

* Weight in Kg * Dimensions in mm

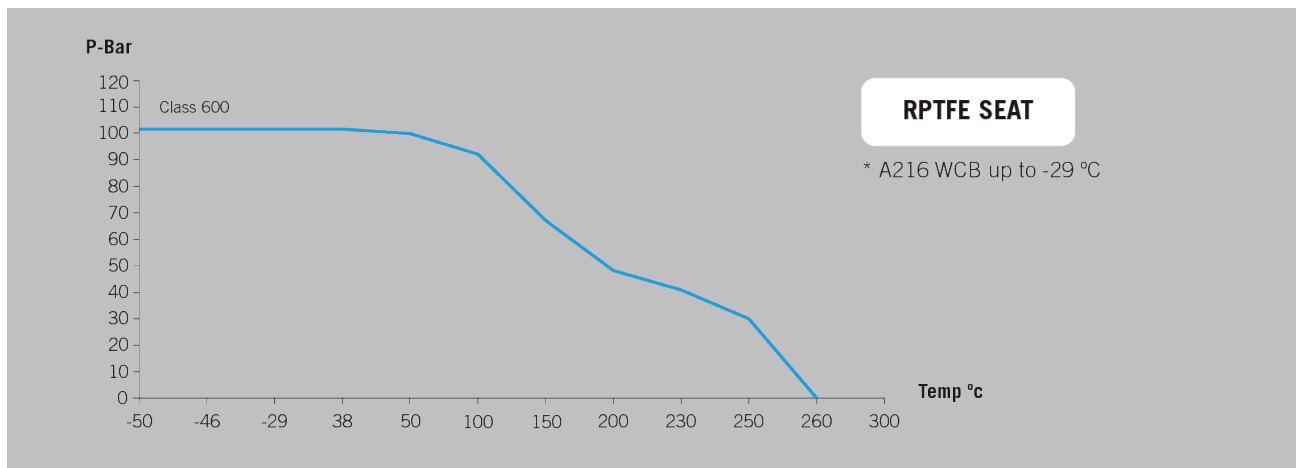
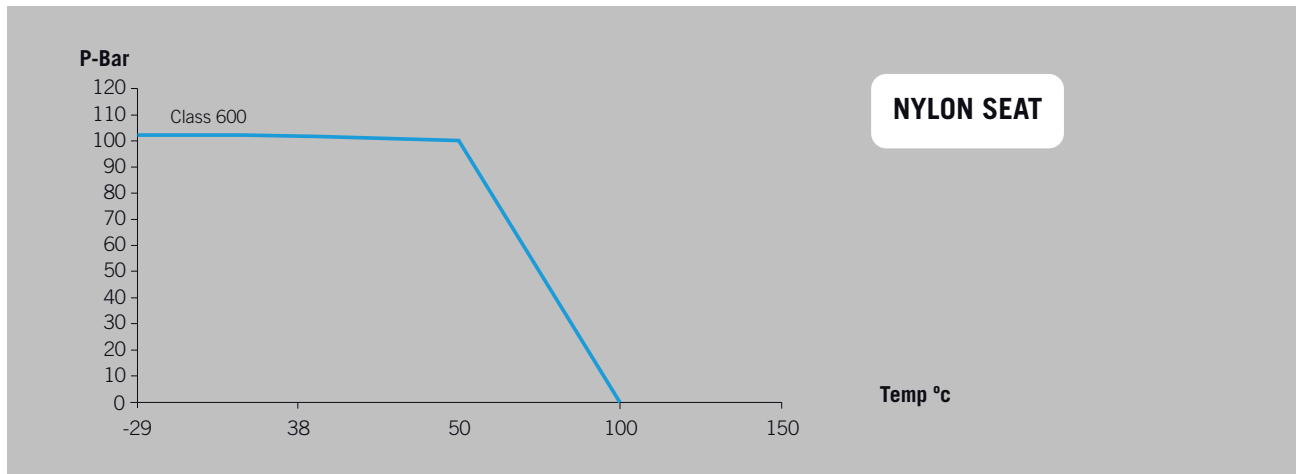
Actuator Connection

DN	ISO 5211	ØA	B	C	ØD	n x F	E	I	J
15	F05	35	11,2	5,0	50	4 x M6	1,5	M12x1,5	9
20	F05	35	23,7	10,5	50	4 x M6	1,5	M12x1,5	9
25	F05	35	33,5	13,0	50	4 x M6	3	M16x1,5	12
40	F07	55	43,0	17,6	70	4 x M8	3	M22x1,5	16
50	F10	70	45,0	19,1	102	4 x M10	3	M25x1,5	18
80	F12	85	55,5	24,3	125	4 x M12	3	M35x2	25
100	F12	85	55,0	23,8	125	4 x M12	3	M35x2	25

Differential Pressure 600 Lbs

DN	BTO	RTO	ETO	BTC	RTC	ETC	MAST
15	23	12	14	17	12	18	26
20	25	13	15	19	13	20	26
25	65	35	41	52	35	55	69
40	114	57	68	86	57	91	176
50	310	155	186	233	155	248	246
80	484	242	290	363	242	387	607
100	310	155	186	233	155	248	607

Pressure – Temperature Charts



ANSI Ball Valves
Flowing



Simple Stem Extension



Standard Stem Extension



Double Packing Stem Extension



Cavity Relief Seat



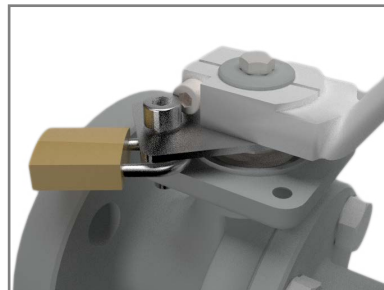
Other Seat materials



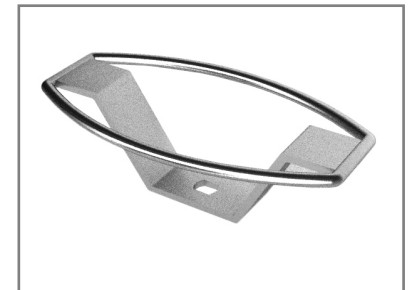
Cavity Filler Seat



Stainless Steel Lever



Locking Device



Oval Handwheel
Available from 1/2" to 2"



Manual and Declutchable
Gears



Pneumatic or Hydraulic
Scotch Yoke Actuators



Valve Automation option
available on Request