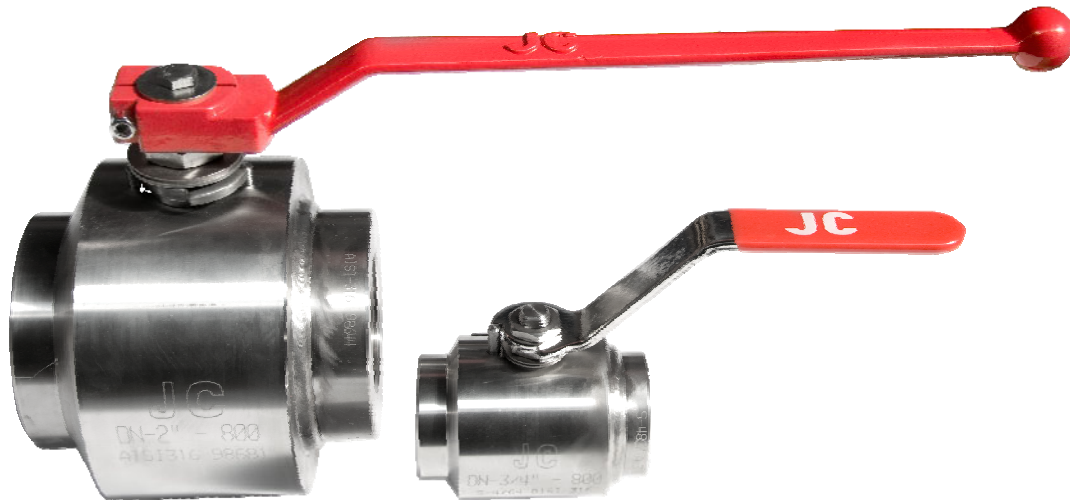




Ball Valves Class-800 LICG & IICG Type DN-3/8" ~ 2"

Index



SERIES 400 FULL BORE & REDUCED BORE

NPT, SW & BW Ends

Face to face dimensions Manufacturer's Standard

Manufacturing program:



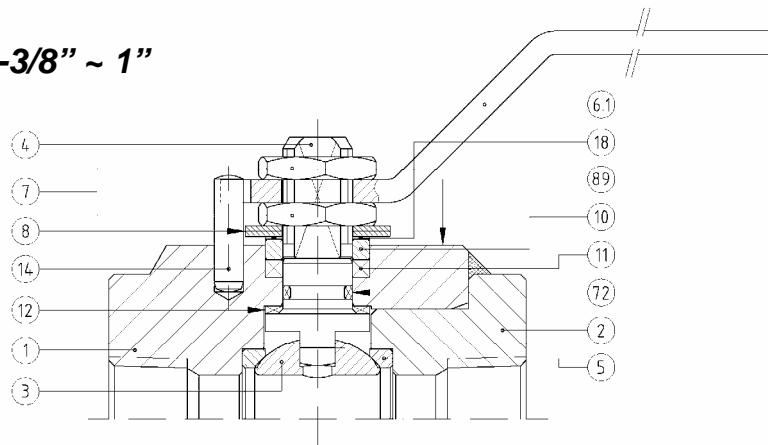
Quality & Environmental Management:



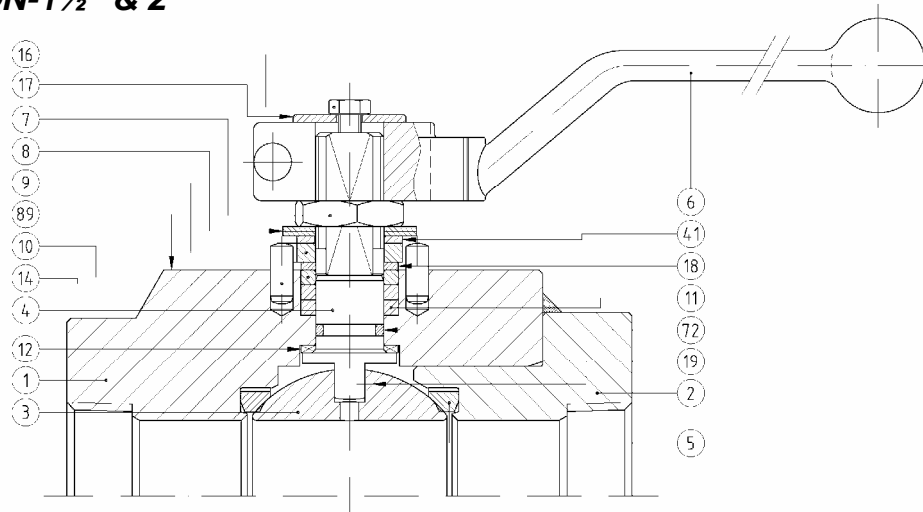


Ball Valves Class-800 LICG & IICG Type Parts & Materials

DN-3/8" ~ 1"



DN-1½" & 2"

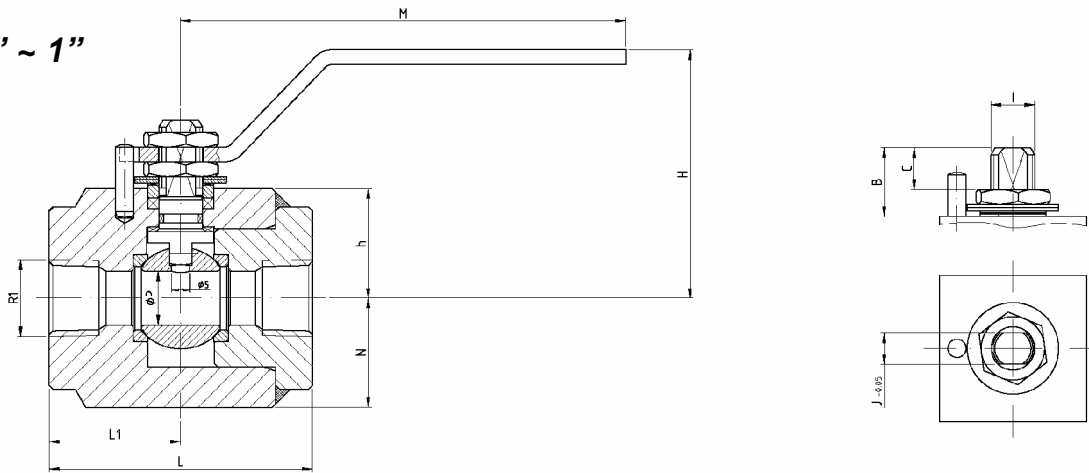


Item	Description	Material	
		L.I.CG.	I.I.CG.
1	Body	A 350 Gr. LF2 Class 1	A 479 Tp.316L
2	Body connector	A 350 Gr. LF2 Class 1	A 479 Tp.316L
3	Ball	A 351 Gr. CF8M	
4	Stem	AISI 410	
5	Seat ring	Carbon graphite filled PTFE	
6	Wrench (DN-1½" & 2")	Nodular iron	
6,1	Wrench (DN-3/8" ~ 1")	AISI-316	
7	Gland nut	AISI 303	
8	Disk spring	E.N.P. Carbon Steel	
9	Stop plate (DN-1½" & 2")	AISI 304	
10	Gland	AISI 316	
11	Gland packing	Graphite	
12	Stem thrust seal	25% G.F. PTFE	
14	Stop pin	Stainless St.	
16	Bolt (DN-1½" & 2")	DIN 933 A2	
17	Washer (DN-1½" & 2")	AISI 304	
18	Thrust washer	25% G.F. PTFE	
19	Antistatic device	Stainless St.	
41	Spacer (DN-40 & 50)	AISI 304	
72	O' Ring	FKM	
89	Identification plate	Stainless St.	

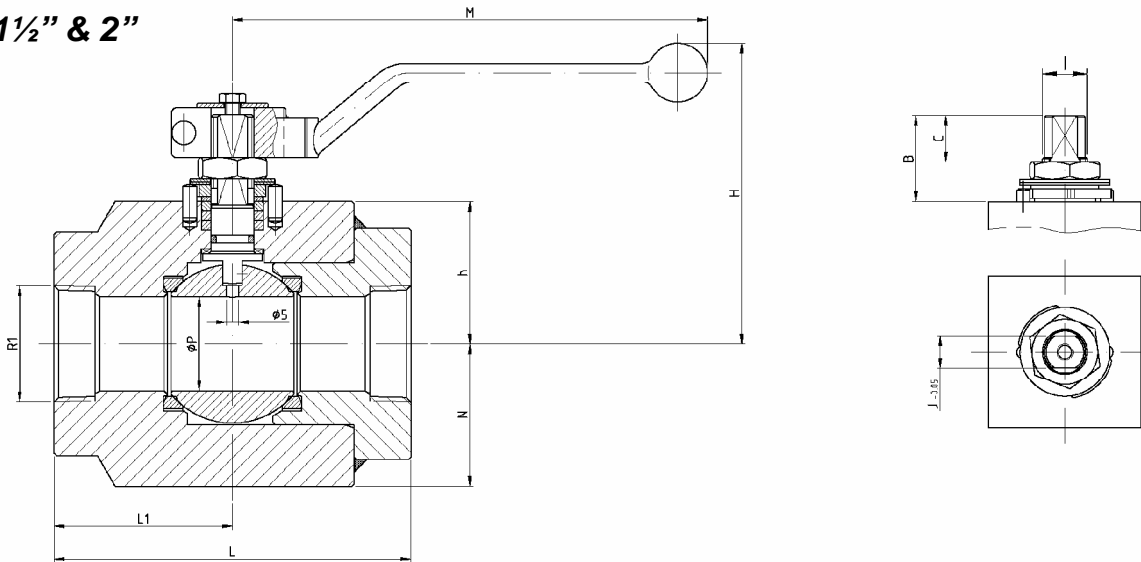


Ball Valves Class-800 LICG & IICG Type Dimensions

DN-3/8" ~ 1"



DN-1 1/2" & 2"



OTHER CONSTRUCTIONS

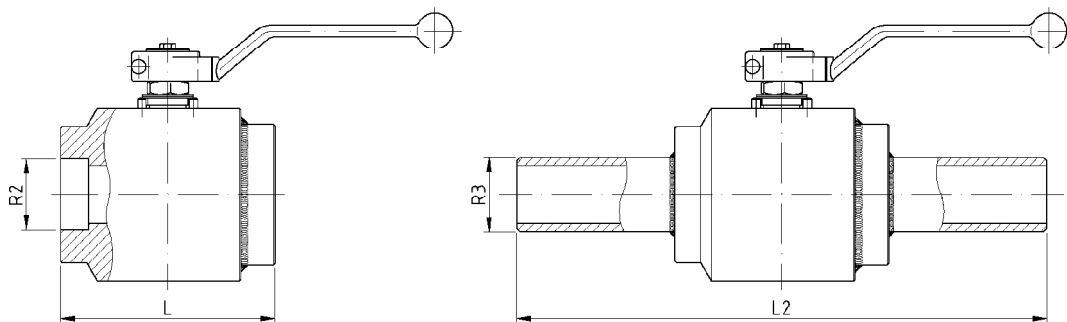


FIG.400 Class-800

DN	L	L1	L2	ØP	h	N	H	M	B	C	I	J	R1	R2	R3
3/8"	70	35	240	9,5	25	25	86	158	16	8,1	M10x1,5	7	3/8" NPT	3/8" SW	3/8" BW
1/2"	72	36	240	15	30	30	91	158	18,7	10,6	M12x1,5	9	1/2" NPT	1/2" SW	1/2" BW
3/4"	90	45	240	20	32,5	32,5	94	158	19,2	11,1	M12x1,5	9	3/4" NPT	3/4" SW	3/4" BW
1"	95	47,5	240	25	36	36	98	158	19,7	11,1	M12x1,5	9	1" NPT	1" SW	1" BW
1.1/2"	130	65	260	40	60	60	128	213	38,5	19,2	M18x1,5	13	1.1/2" NPT	1.1/2" SW	1.1/2" BW
2"	140	70	260	50	72,5	72,5	141	348	41	19,2	M22x1,5	16	2" NPT	2" SW	2" BW

(*) Dimensions in mm.



Ball Valves Class-800 LICG & IICG Type

Options

Fig.401 Full Bore
(NPTF / NPTF)

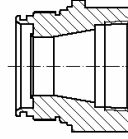
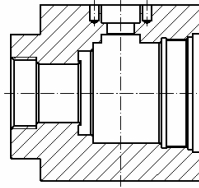


Fig.411 Reduced Bore
(NPTF / NPTF)

Fig.402 Full Bore
(SW / SW)

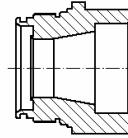
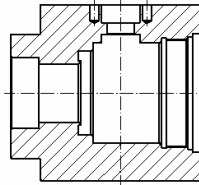


Fig.412 Reduced Bore
(SW / SW)

Fig.404 Full Bore
(BW / NPTM)

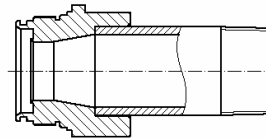
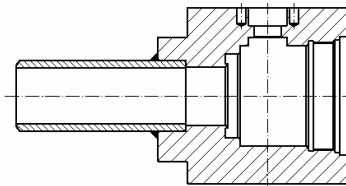


Fig.414 Reduced Bore
(BW / NPTM)

Fig.404H Full Bore
(NPTF / BW)

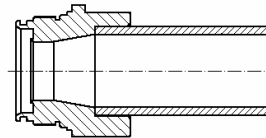
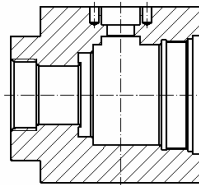


Fig.414H Reduced Bore
(NPTF / BW)

Fig.405 Full Bore
(NPTF / SW)

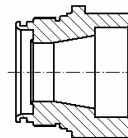
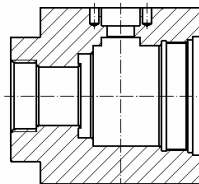


Fig.415 Reduced Bore
(NPTF / SW)

Fig.405TV Full Bore
(NPTF / GASM)

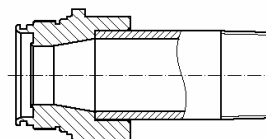
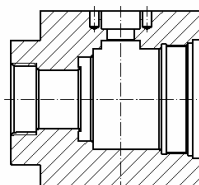


Fig.415TV Reduced Bore
(NPTF / GASM)

Fig.406 Full Bore
(NPTM / NPTM)

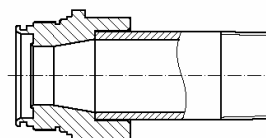
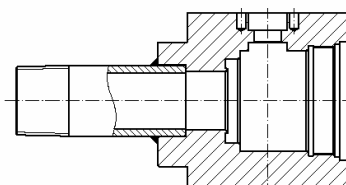


Fig.416 Reduced Bore
(NPTM / NPTM)

Fig.407 Full Bore
(BW / BW)

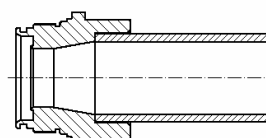
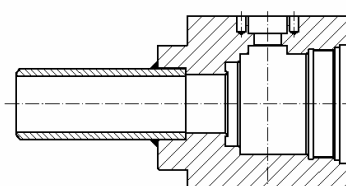


Fig.417 Reduced Bore
(BW / BW)



Ball Valves Class-800 LICG & IICG Type

General Characteristics, Torque & P&T Rating

GENERAL CHARACTERISTICS	Fig. 400, Series WFF	W elded	F loating	F ull
DESIGN STANDARDS				
Valves design	EN ISO 17292			
Shell thickness	EN ISO 17292			
End to end dimensions	Manufacturer's standard			
Marking	EN 19	CE Mark > DN1"	ATEX	EN ISO 17292
TESTS AND CERTIFICATES				
Quality Assurance	ISO 9001			
Fire safe Certification	ISO 10497	BS 6755 Part 2	API 6FA	
Pressure testing	API 598		EN ISO 17292	EN 12266
Other	ISO 14001	ATEX		

Torque Values in Nm

BALL BORE (mm)	AT DIFFERENTIAL PRESSURE	AT DIFFERENTIAL PRESSURE	AT DIFFERENTIAL PRESSURE
	20 bar	55 bar	138 bar
9,5	6	9	16
15	8	12	20
20	10	16	25
25	15	20	30
32	22	28	40
40	25	35	50
50	40	55	70

Pressure-Temperature

P Bar

