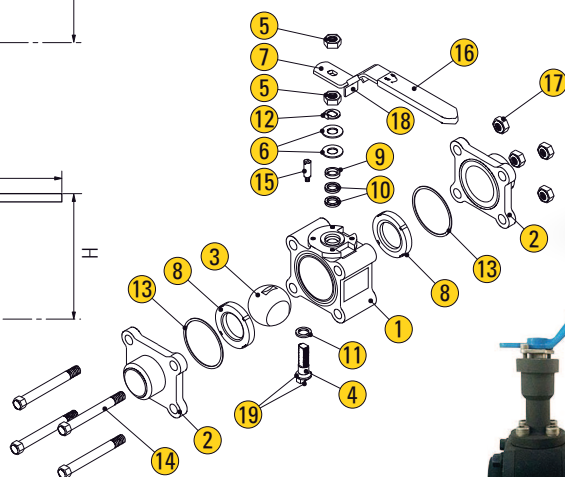
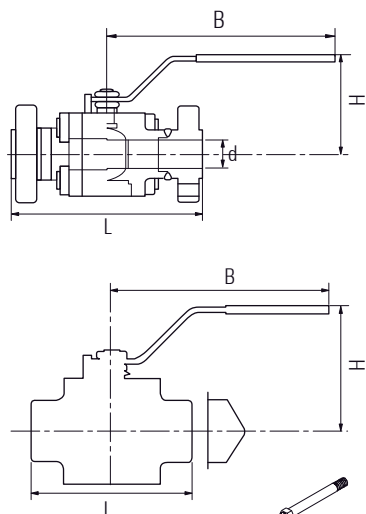


# 3-PC FULL / RED. PORT HIGH PERFORMANCE BALL VALVE

## SCREW END / BUTTWELD END / SOCKET END / FLANGE END

### FORGED CARBON STEEL / STAINLESS STEEL



Option : Extended Bonnet

Option : Extended End

## APPLICATION

Suitable for water, steam, oil, gases and non-abrasive media  
(Refer to corrosion resistance table for valve materials selection).

## SPECIFICATION

- 3 Pieces body design
- Blow-Out-Proof stem design
- Forged steel components
- Four point ISO 5211 mounting pad bold circle
- End connection : Threaded, Socket weld, Butt weld, Flange end

Full bore	1/4" - 2" (DN8 - DN50)
Reduce bore	1/2" - 2" (DN15 - DN50)
Body	ASTM A105 / F316
Ball / Stem	CF8M / SS316
Seat	RTFE + (15% Glass fiber filled)
Working Pressure	Class 600, 800, 900, 1500 and 2500
Temperature Range	-4 to 356°F (-20 to 180°C)

## MATERIAL

Parts	Material	Parts	Material
1 Body	F316 A105N	11 Stem Seal	RPTFE
2 End Cap	F316 □ A105N	12 Lock Saddle	SUS304
3 Ball	SUS316	13 Joint Gasket	PTFE
4 Stem	SUS316	14 Bolt	SUS304 *
5 Stem nut	SUS304	15 Stop Pin	SUS304
6 Belleville Washer	SUS301	16 Handle Sleeve	Vinyl
7 Handle	SUS304	17 Bolt Nut	SUS304 <b>f</b>
8 Seat	RPTFE	18 Locking Device	SUS304
9 Gland	SUS304	19 Anti-Static Device	SUS304
10 V-Shape Packing	MG-1241		

Note : □ Socket weld and butt weld uses CF3M material | \* For 1/4" to 1-1/2"- 4pcs ; 2" to 2-1/2"- 6pcs | **f** For 1/4" to 1-1/2"- 4pcs ; 2" to 2-1/2"- 6pcs

## DIMENSIONS - THREADED, SOCKET WELD, BUTT WELD

Unit : mm

Class	Size (in)	1/4	3/8	1/2	3/4	1	1-1/4	1-1/2	2
600/ 800	L 1	92	92	92	111	127	140	152	152
	B	108	108	108	146	178	178	200	200
	H	51	51	51	51	81	85	105	105
	d	6	9	13	18	23	28	35	49
900/ 1500	L 1	92	92	92	111	127	140	152	152
	B	108	108	108	146	178	178	200	200
	H	51	51	51	108	81	85	105	105
	d	6	9	13	19	25	32	38	49

## DIMENSIONS - FLANGE END

Unit : mm

Class	Size (in)	1/2	3/4	1	1-1/4	1-1/2	2
900/ 1500	L	216	229	256	279	305	368
	B	230	230	350	400	400	400
	H	75	85	85	105	110	130
	d	13	19	25	32	38	49
2500	L	264	273	308	349	400	451
	B	280	280	95	350	110	400
	H	75	85	95	105	38	130
	d	13	19	25	30	11.5	42