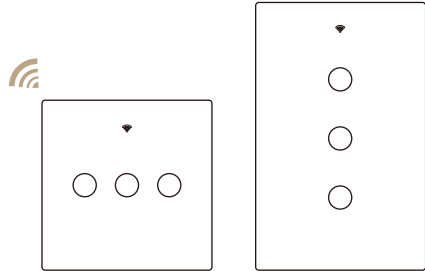


# Smart Window Switch User Manual



## Function key and indicator description

When the switch is turned on, the blue light will light up. Then short press any touch button until the purple button is on, which means the power has been turned on. On the contrary, the power will be turned off when the purple button is off. The Wi-Fi indicator will be on for a long time and flash at once as long as connect the switch to Wi-Fi successfully.

## Safety Information

**Risk of Electric Shock:** Electricity can cause personal injury and property damage if handled improperly. If you are not sure about any part of these instructions, please seek professional assistance from a qualified electrician.

### Technical Parameters:

Working voltage: AC100-240V, 50/60HZ  
 Current type: 10A  
 Rated load: total load 3500W  
 Wireless type: Wi-Fi 2.4GHz  
 Input voltage: AC100-240V, 50/60HZ  
 Power consumption: ≤0.5W  
 Working temperature: 0°C-40°C  
 Support system: Android/iOS

### Warnings:

Turn off the power at the circuit breaker and test that power is off before wiring.

## Installation

### Note:

- Make sure that the power at the circuit breaker is off before wiring.
- Neutral Wire is required. Confirm the wall box contains a Neutral Wire (typically white). If the wall box don't have a Neutral Wire, please try another location at your home or call a professional electrician to install the switch.
- The wire colors indicated in this manual are the usual colors and may differ in some houses.
- Ensure the wire conductors are securely fastened to each wire.
- Ensure the Wi-Fi signal is steady and normally working before wiring.
- If you don't have any wiring experience, please call a professional electrician.

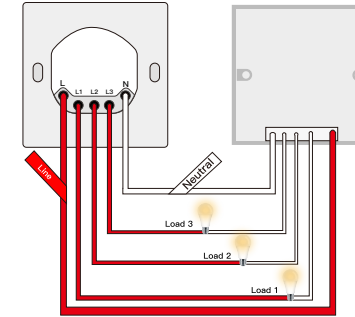
### Step 1

- Turn off the circuit breaker and use the electrical tester to test the power.
- Ensure the switch is off before wiring.



### Step 2

- Remove the existing wall plate; turn on the power at the circuit breaker and use an electrical tester to check which wire is line wire; the tester will flash and/or chirp when it comes close to a line wire.
- Turn off the power at the circuit breaker and use the electrical tester if the power is off, and pull the existing switch out; label the line wire and other wires; disconnect the wires from the existing switch with pliers.
- Follow the wiring diagram to connect the switch wires to the wires in the wall box with the wire conductors.



### Step 3

- Mount the switch with the provided screws and snap the wall plate on it.

### Step 4

- Turn the power back on at the circuit breaker and then switch the light on.

## Add Devices

### 1 Download Smart Life App



Please scan the QR code or download Smart Life on App store.

### 2 Registration or Log in

- Download "Smart Life" Application

- Enter the Register/Login interface; tap "Register" to create an account by entering your phone number to get verification code and "Set password". Choose "Log in" if you already have a Smart Life account.

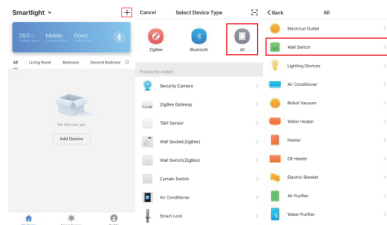
### 3 Configure the APP to the switch

- Preparation: Ensure the switch has been connected with electricity; ensure your phone has been connected to Wi-Fi and is able to connect to the Internet.

### Note:

The switch only supports 2.4G network. If you have connected 5G network, please disconnect 5G network firstly and connect 2.4G network.

- Tap the icon "+" on the top right to Select Device Type; tap "All" and choose "Wall Switch".



### 3.1 Wi-Fi link method:

- Make sure your phone is connected to Wi-Fi and log into your Smart Life APP account.
- Connect the switch to the power supply. Press and hold any touch button for more than 10 seconds until the blue Wi-Fi indicator enters the flash mode.
- Click "+" on the upper right corner of the APP, and then select "Switch" from the device type. Click "OK to flash".
- Enter the connected Wi-Fi login account and click "OK" to enter the search device page.
- Enter the device page after the pairing is successful and then complete the configuration.

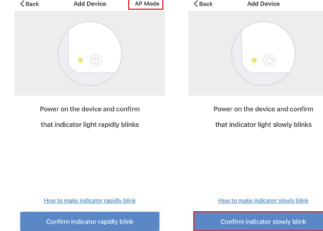
### 3.2 Remote radio frequency (RF) link method:

- Press and hold the touch button that will be on the code until the red indicator lights up and release your hand.
- Then it would begin to enter the remote radio frequency (RF) pairing. By pressing the corresponding control button on the remote control, the red indicator light will be off after successful pairing. If the timeout cannot be successfully paired, the red indicator will flash a few times and then you need to go out.
- Press any button on the remote control to pair. After the pairing is done, you will be able to control the switch remotely.

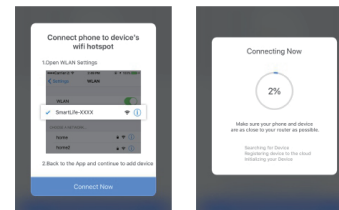
### AP Mode

- If you can't configure with the default mode successfully, please try to connect with AP Mode.
- Tap "AP Mode" on the top right.
- Press and hold the manual switch for 20 seconds; you will see the red indicator light blink quickly. Then press and hold the switch for 20 seconds again until the indicator light blinks slowly.

### • Tap "Confirm indicator slowly blink"



- Enter Wi-Fi Password.
- Open WLAN settings and connect with "Smart Life-xxxx".
- Back to the App and continue to add the device and wait for completing the connection.



## Set your Echo speaker by Alexa APP

- 1 If you have finished installing Smart Life, just open Amazon Alexa App; log into your Alexa account with password.

- 2 Click the menu on the top left - click "settings", choose "Set up a new device" (choose a device like Echo)

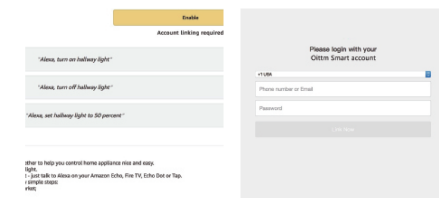
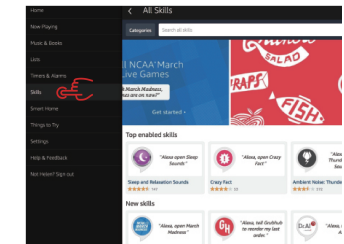
### Note:

When below page appears, long press the small dot on your Echo device until the light turns to yellow. Then click "Continue" on the App.  
**Attention:** The mobile phone can not open a variety of VPN software.

- 3 Choose your own Wi-Fi and wait for a few minutes. After watching an introduction video, click "next step", then it will enter Home page automatically. Now the Echo has been connected to Wi-Fi successfully.

## Enter Smart Life Skill in Alexa APP

Choose "Skills" in the options bar, and then search "Smart Life" in the input box.



Then input the user name and password of Smart Life APP that you have previously registered. Now you can use your Alexa to control your Smart devices, enjoy your smart life with MOES.