

AM56 Receiver Built-in Chain Window Opener Instruction

The product consists of DC motor, reducer, energy saving controller and damping mechanism, characterized by small size, light-weight, low noise, accurate journey position, strong concealment and easy installation. Energy saving design makes it used longer.

I. Features

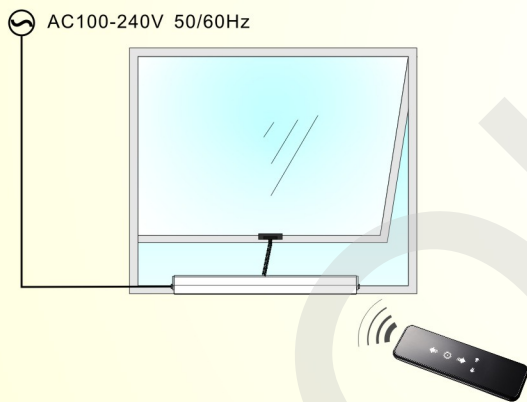
- ❖ Aluminum housing with sand blast treatment;
- ❖ the cover and brackets are zinc alloy die castings;
- ❖ Adjust the journey by adjusting knob, the Maximum stroke could reach 400mm and the min 100mm;
- ❖ Easy to install and take down;
- ❖ Two Flame Resistance ABS holders and the POM sliding guide make the motor more safety and silent.
- ❖ Automatically stop on physical obstruction; protect the motor and the user;
- ❖ The chain goes back after rebound;
- ❖ Apply to small size window, down to 470mm windows.
- ❖ Stay the unchangeable speed, the chain's 10mm/s;
- ❖ Electronic limit, high precision and, Easy to adjust the journey.



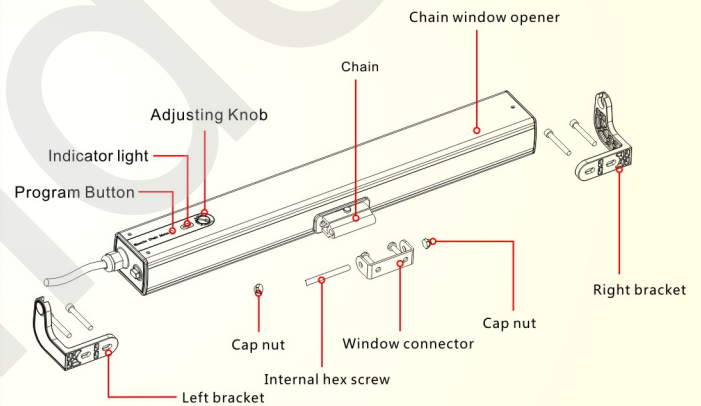
II. Parameters

Model No	Rated Voltage	Rated Power	Push/Pull Force	Speed	Running Trip	Temp	Size	IP Class
AM56-LE250N-400mm	AC 100-240V	28W	250N/250N	10mm/s	100~400mm	-20°C~+75°C	460X42X56 mm	IP42

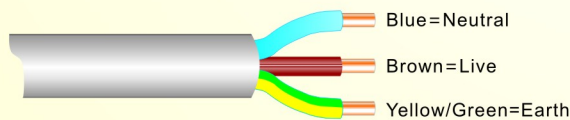
III. Application



IV. Structure Explanation



V. Installation



Hopper window application

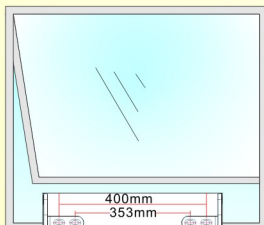
Top-hung window application

Center-pivoted window application

VI. Installation Step

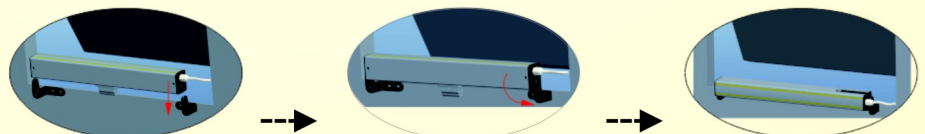
Step 1. Bracket Installation

Measure the width of the window frame and install the window opener in the middle of the window frame. Install the two brackets according to the size as photo shown.



(Photo 1)

Step 2. Motor Installation



1. Motor's chain face down, put the motor into the bracket.

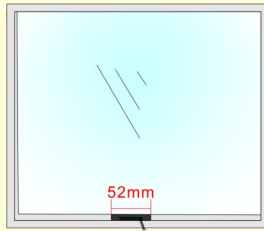
2. Motor rotate 90 degree as the arrow diagram. Make motor's chain face the window.

3. Motor installation finish.

(Photo 2)

Step 3. Window connector Installation

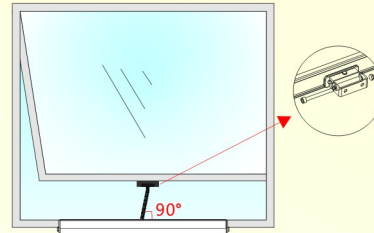
Measure the width of the window sash and install the window connector in the middle of the window sash. Fix the connector on the window according to the size as photo 3 shown.



(Photo 3)

Step 4. Diagram of motor connector and motor

Put the fix pin into the hole connecting motor and the connector and fix the screw. Adjust the bracket make sure the chain perpendicular to motor. Installation finish.



(Photo 4)

VII. Operation Instruction

1. Programming Preparation

Notice: It will exit the program if there is no operation within 10s.

Way 1

Press the PROG and hold for 1s

The LED flashing slow and enter into programming preparation

Way 2

Press the programmed remote STOP button and hold for 5s

The LED flashing slow and enter into programming preparation

Way 3

Cut off motor power, press and hold remote UP button for 3s till its LED lighting

Power on the motor, motor LED slow flashing and enter into programming preparation

2. Programming

To be in the programming preparation

Press remote UP button for 1s

LED flashing quick 3 times, programming complete

3. Change direction

To be in the programming preparation

Press the programmed remote DOWN button

LED flashing quick 3 times, direction changed

4. Delete single code

To be in the programming preparation

Press the programmed remote back PROG button 1s

LED flashing quick 3 times, single code deleted

5. Delete all codes

Way 1

To be in the programming preparation

Press the programmed remote back PROG button in 7s

Motor LED lighting 1s and out, all codes deleted

Way 2

Press the motor PROG for 3s till the LED quickly flash

Release and press PROG again till the LED light out, all codes deleted

VIII. Trouble Shooting

NO.	Faults Phenomenon	Faults Reason	Elimination Methods
1	Power on, motor isn't working.	A. Power's voltage can't match the motor's B. Motor is overload. C. The motor is stuck by inappropriate installation.	A. Change the power B. Change motor to bigger torque. C. Check every components installed in the right way.
2	Motor suddenly stop when it's working.	A. Power off	A. Power on the motor