

# Operation Instruction

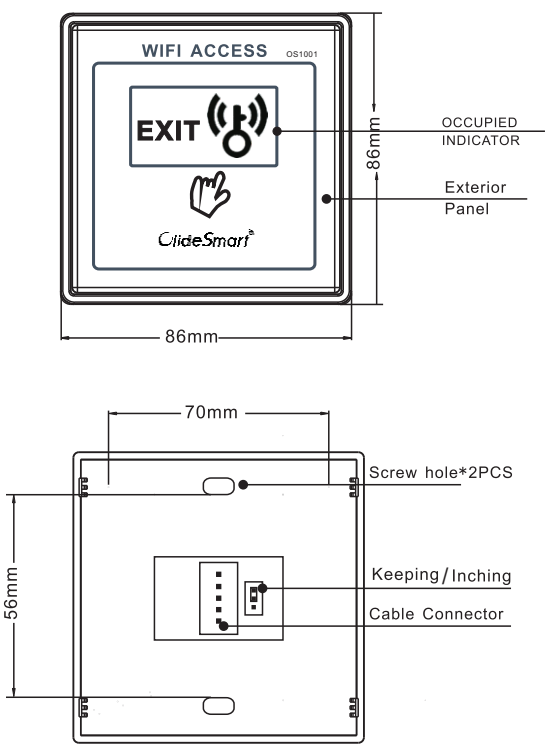
## OS1001 WiFi Access Control



### 1 Safety Instruction

**!** Thank you for purchasing, please read this instruction before installation.

### 2 Product Over-view



### 3 LED light instruction

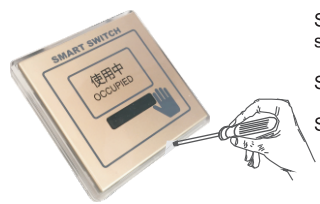
LED light flickers once each 2S: can not link with WIFI.  
 LED light flickers twice each 2S: can not link to web server.  
 LED light flickers in 1S and then goes off in 1S : link with web server but not registered.  
 LED light with fast flicker in 200MS, and then goes off in 200MS: under matching status.

### 4 Characteristic

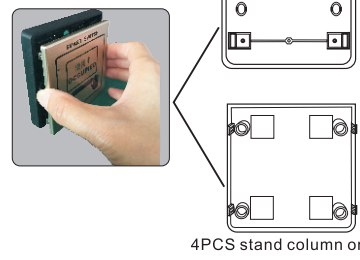
- International 86 Size panel design, Panel is ray carving process, fashionable and high-grade.
- Press panel or Mobile APP to open door. Door can be open by remote through Mobile APP.
- Mobile APP to open door when enter in. Press panel or mobile APP to open door when go out.

### 5 Notices

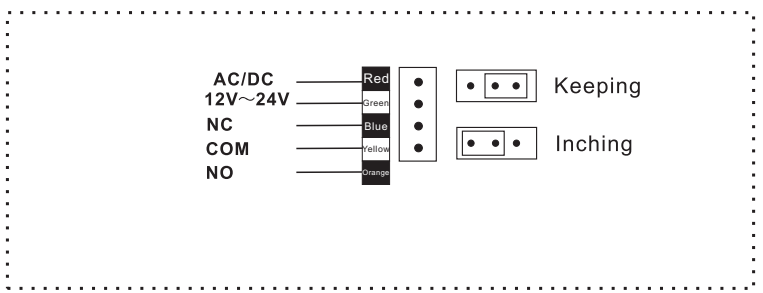
- The right way to open cover
  - Step1:Mat with one piece of paper on cover to avoid surface scratch.
  - Step 2:Use a small screwdriver to pry slightly.
  - Step 3: Surface cover is opened.



- The right way to cover the top cover
  - 4PCS square holes on Bottom Pan
  - Note: Match 4pcs square holes on bottom pan with 4Pcs stand columns on cover and then press.
  - 4PCS stand column on cover



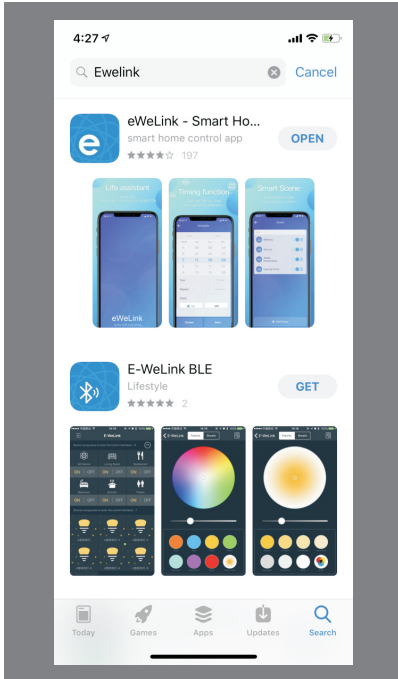
### 6 Input&Output



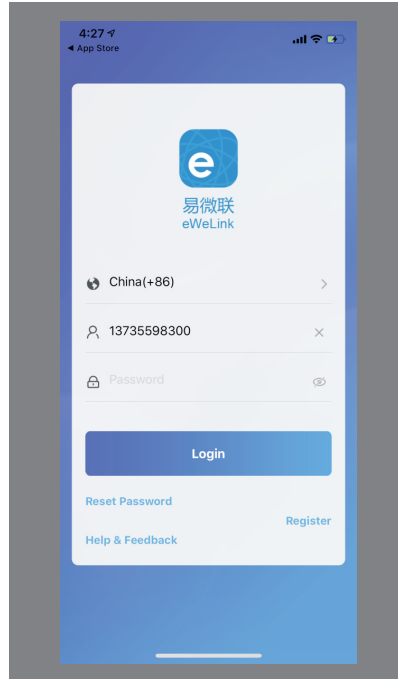
### 7 Parameter

Working Voltage	AC/DC 12~24V
quiescent current	85mA (12V)
Action Current	115mA (12V)
Size	86mm (L) × 86mm (W) × 14mm (T)
Output	Relay Signal
Output Time	1S
Press method	1S Pressing to open door, 5S pressing to enter matching status.
security mechanism	Allow the first register as user manager

## 8 APPLE SETTING



Step 1: Find out software "E-WeLink" and have it installed into APPLE mobile.

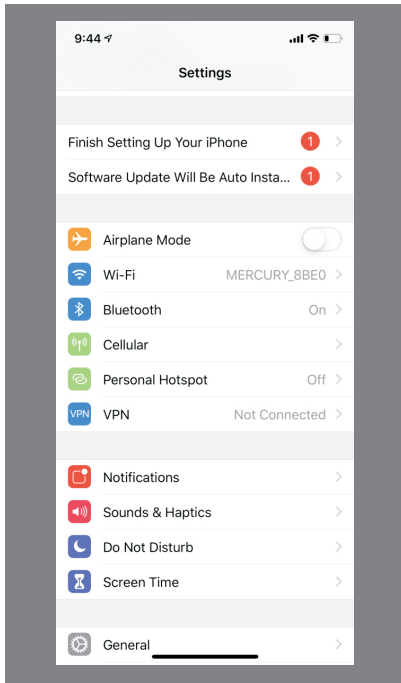


Step 2: OPEN E-WEBLINK APP, and register with a new account. Mobile number for Asia area registering and others with email address available.

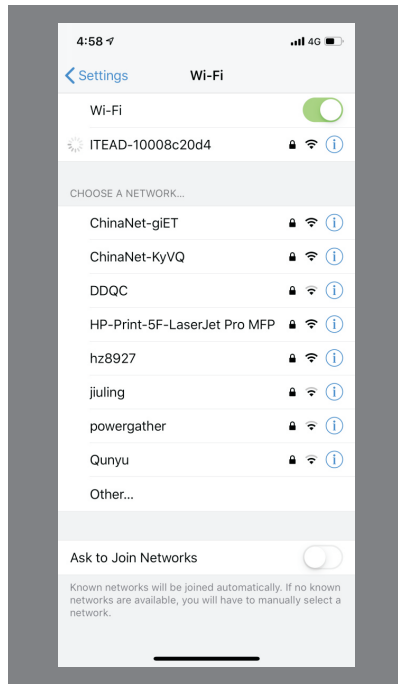
Enable OS1001 wifi to broadcast hot spot, and connect phone's wifi with it.



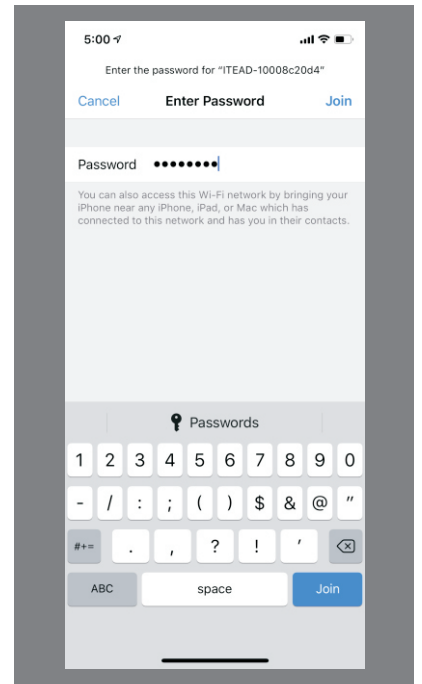
Wire the OS1001 with Olide system. Keep Pressing OS1001 5 seconds, then the light keep flash 3 times and stop 1 second. Then Press OS1001 5 seconds again, the light will keep flash quickly and nonstop.



Step 3: Press HOME button on mobile, and enter into WIFI setting.



Step 4: Find out WIFI named "ITEAD" and link with it.

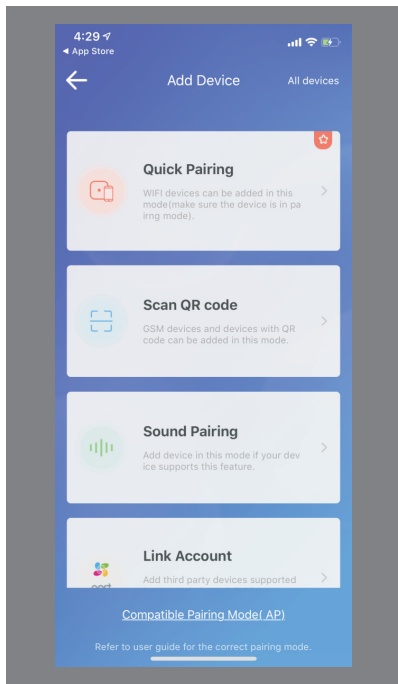


Step 5: Insert original password:12345678 to join in.

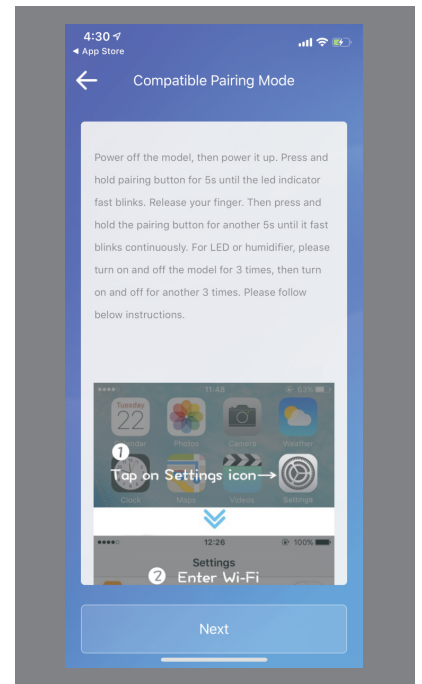
## 8 APPLE SETTING 2



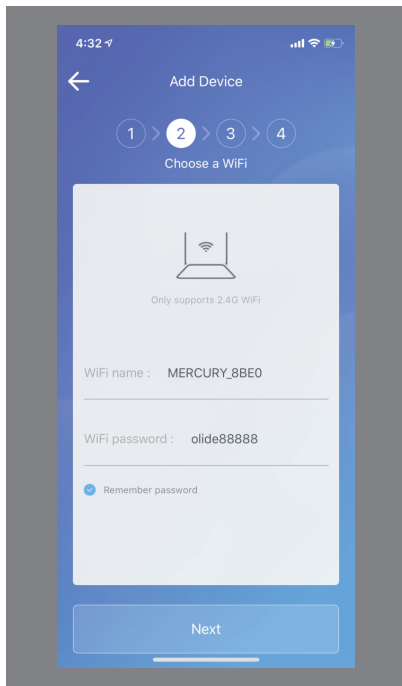
Step 6: Open E-WEBLINK APP, enter with your account. and press "+" to add equipme



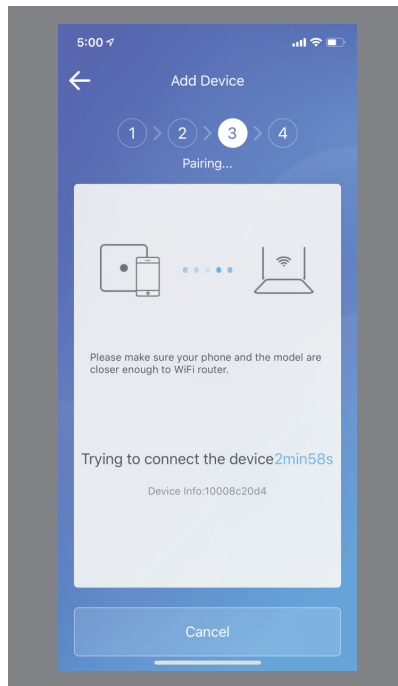
Step 7: Choose Compatible pairing mode (AP)



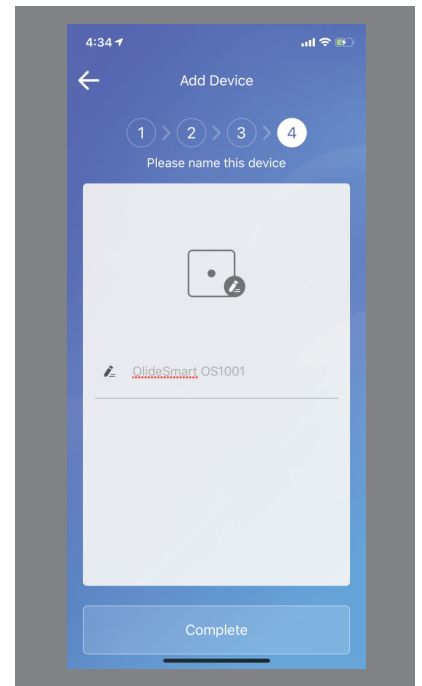
Step 8: press "next"



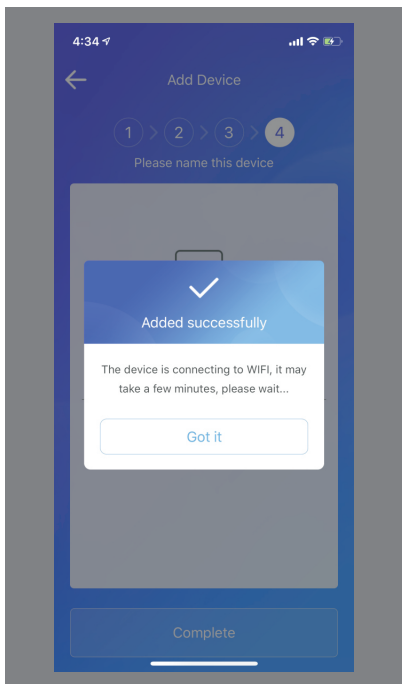
Step 9 : Insert your WIFI and password. If already connected, press "NEXT"



Step10: System will search WIFI Access control and register automatically.



Step11 : User can revise equipment name. And Click "finished"



Step12: Click "confirmed"

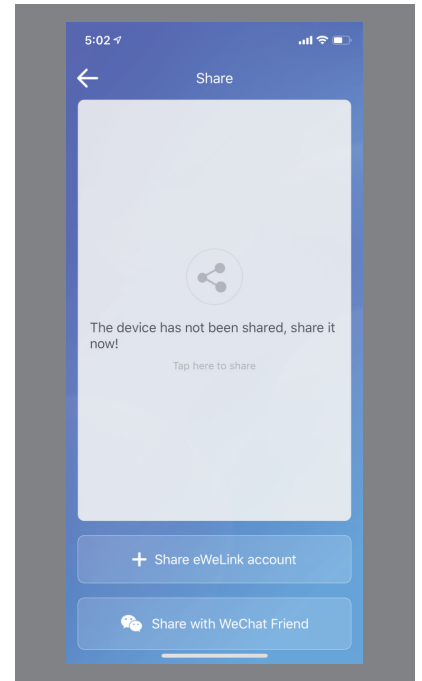
## User Share setting



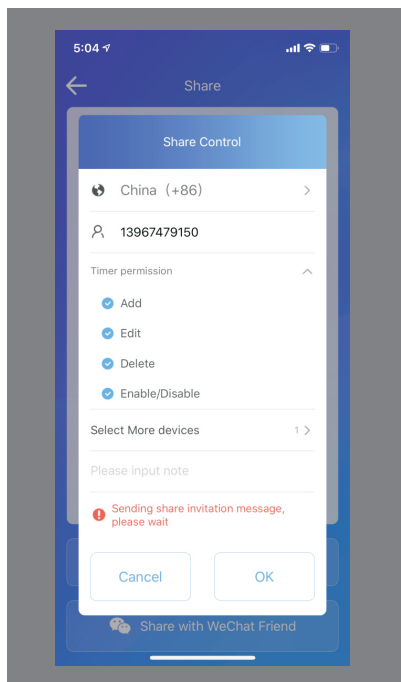
Step13: You will see the equipment on this page. Press it to output DOOR OPEN signal.



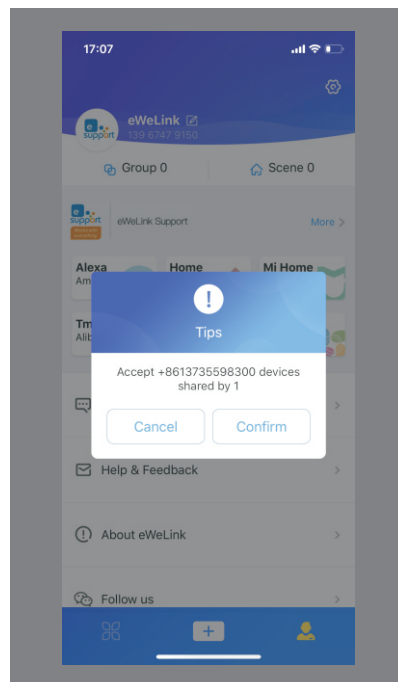
Step14: on this page, you can press middle button to open door.  
OFF: DOOR LOCK. ON: DOOR OPEN.



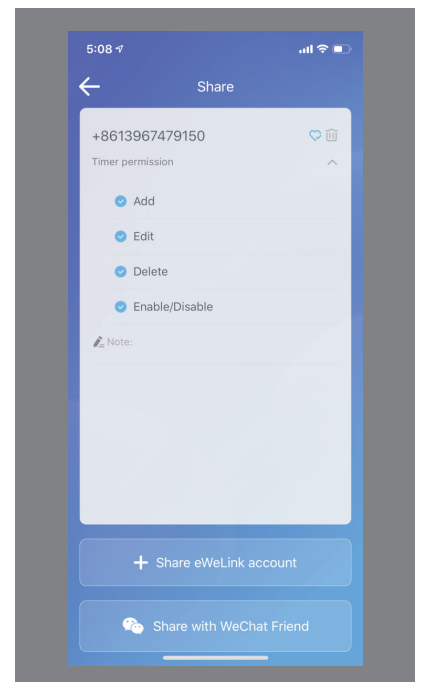
Step 15 : Click "SHARE"



Step 16 : Insert mobile user you want to share with, and click confirmed.



Step 17 : To accept sharing, you need to have E-WEBLINK APP, account no. and click confirm to receive.



Step 18 : Sharing Accepted.

**Note:** Due to our privilege Settings, the first account to add and match this smart device is the primary account -- that is, the owner of the device. Before the primary account takes the initiative to delete the device itself, other users can operate the device through the sharing function, but cannot add the device by themselves through the "+" add button.