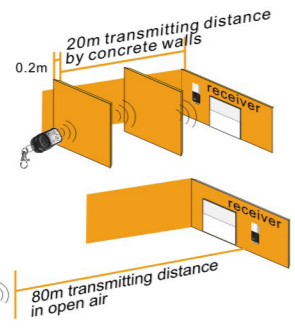


AC249-01 Garage Door Controller Manual



1. Feature

- With the stop-once-blocked and rebound-once-blocked feature;
- With photocell detector and safety beam devices;
- Protect function once overloading, available to connect with out-set manual switch, and built-in courtesy light;
- After the door is opened, the courtesy light has 3 min delay working time;
- Adjustable motor continuous working time (time range from 1s to 90s);
- Adjustable automatically close door time (180s time range after motor reach upper limits);
- Waterproof design comes trued by Anti-UV ABS+PC material cover.

2. Parameter

Model No.	Working Voltage	Working Temp	Frequency	Loading power	Transmitter power	Sensitivity	Operation
AC249-01	AC100-240V 50/60Hz	-40°C~+70°C	433.92MHz	Motor AC 220V/50Hz ≤ 750W AC110V/60Hz ≤ 500W LED ≤ 5W	≤10mW	-110dBm	remote/manual

Notice

Besides the Standard of Electric Safety, please follow

Make sure the power has been cut off before wiring to ensure safety

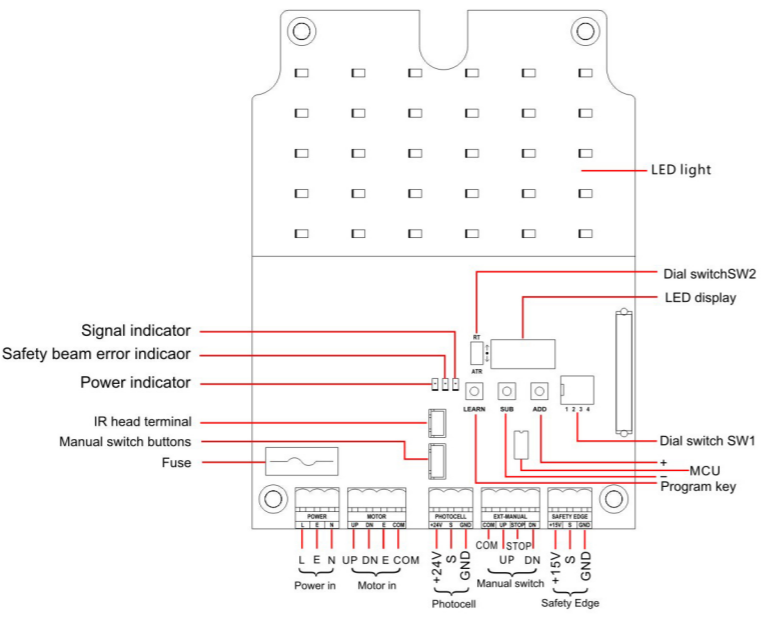
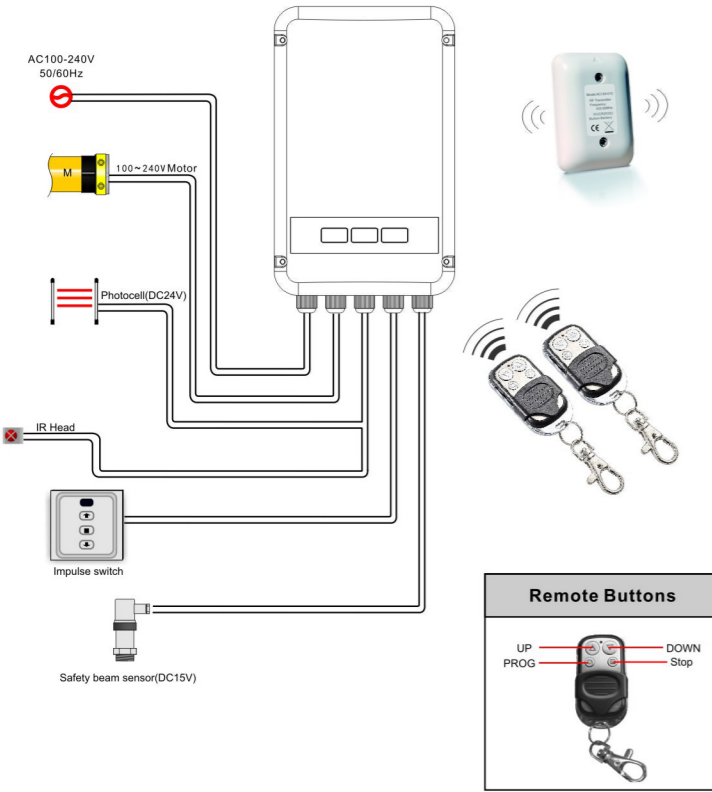
Pay attention to static

Earth wire must be installed

Installation distance

- Minimum distance between the receiver and the grounds is 1.5m;
- Minimum distance between the receiver and the roof is 0.3m;
- Minimum distance between two receivers is 10.2m;
- Please use flexible cables;
- Ensure no longitudinal force is acting on cables after installation;

3. Installation and wiring

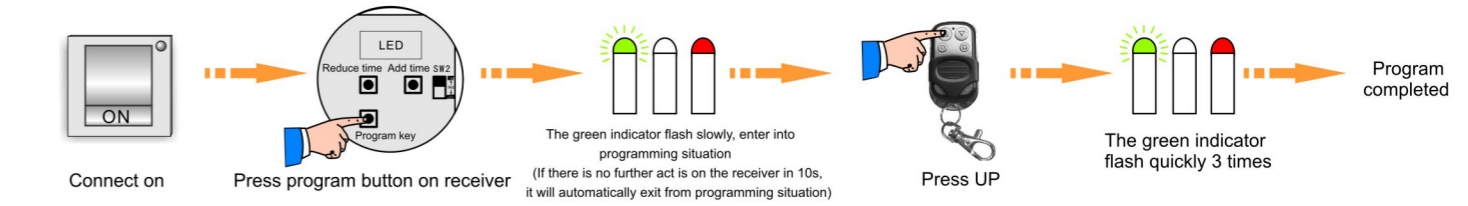


Power in L: Living line (brown) N: Neutral line (blue) E: Earth (yellow/green)	Photocell wiring +24V: DC24V output GND :DC output S: signal input	Motor wiring +15V: DC 15V output S: Signal input GND: DC output
Motor wiring UP: UP DN: DOWN E: Earth COM: Common	External switch wiring COM: COMMON UP: UP STOP: LOCK DN: DOWN	

4. Function and testing

Locking Operation: 1. when the lock terminal disconnected, the controller enter into lock condition, motor stop working and accepting commands.
 2. when the lock terminal connect with common terminal, the controller released from the locking condition.

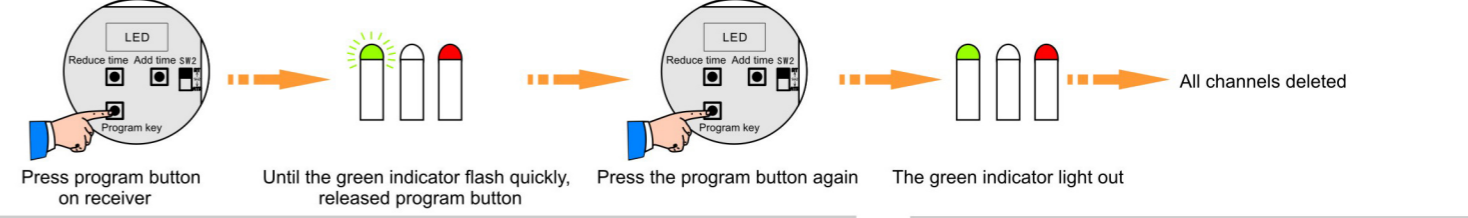
Program



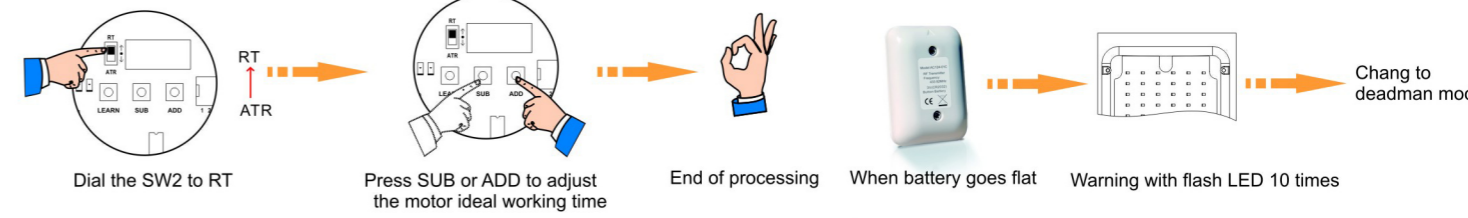
Delete single channel



Delete all channels

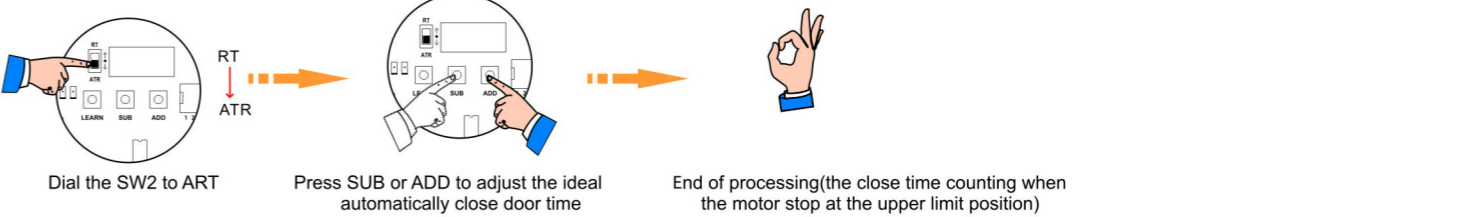


Set the motor continuous working time



Low Battery warning

Set the motor automatically close door time



Photocell and safety beam



Receiver Working Mode

Make sure SW1 and SW2 in off condition (the opposite way of ON)

