

FORMWORK



Formwork Frames **1**

Formwork Frame Braces **2**

Formwork Frame Jacks **3**

Frame Accessories **4**

Acrow Props # 00 - # 4 **5**

Tillt Props **6**

Plasterboard Wall Prop **7**

Turnbuckle Props **8**

DYNATON SALES & HIRE

BRISBANE (QLD) BRANCH
213 SANDY CREEK ROAD, YATALA
QLD 4207 AUSTRALIA
TEL: 07 3287 4633
E-MAIL: SALES@DYNATON.COM.AU

SYDNEY (NSW) BRANCH
1/8 CORNWALL RD, INGLEBURN
NSW 2565 AUSTRALIA
TEL: 02 8711 3470
E-MAIL: SALES@DYNATON.COM.AU

FORMWORK



<u>Aluminium Props</u>	9
<u>Prop Accessories 1</u>	10
<u>Prop Accessories 2</u>	11
<u>Z Bar Products</u>	12
<u>Formwork Accessories</u> <u>Nails/ Plastic Fillet/ Zip ties</u>	14
<u>Packaging</u> <u>Duct Tape/ Strapping</u>	15
<u>Formwork Accessories</u> <u>Pallets/ Pressed Washer/ Couplers/ Screen Cone/ Auger bits</u>	16
<u>Lifting Boxes/Tool Boxes&Trays</u>	17
<u>Self Climbing Screens</u>	18
<u>Freeform Oil</u>	19

DYNATON SALES & HIRE

BRISBANE (QLD) BRANCH
213 SANDY CREEK ROAD, YATALA
QLD 4207 AUSTRALIA
TEL: 07 3287 4633
E-MAIL: SALES@DYNATON.COM.AU

SYDNEY (NSW) BRANCH
1/8 CORNWALL RD, INGLEBURN
NSW 2565 AUSTRALIA
TEL: 02 8711 3470
E-MAIL: SALES@DYNATON.COM.AU

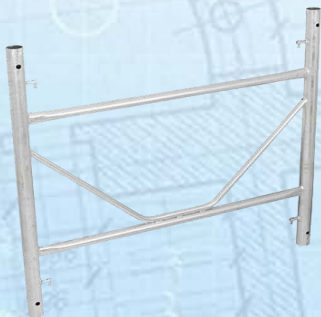
FORMWORK FRAMES



3FT Formwork Frame

*Formwork Frame 3FT
1219mm x 914mm
HDG Steel
Suits with 3FT Brace*

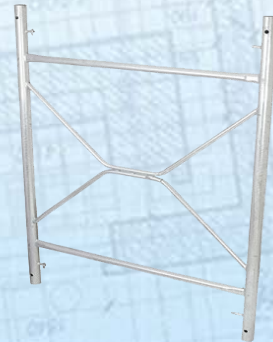
PRODUCT CODE: FF3FT001



4FT Formwork Frame

*Formwork Frame 4FT
1219mm x 1219mm
HDG Steel
Suits with 4FT Brace*

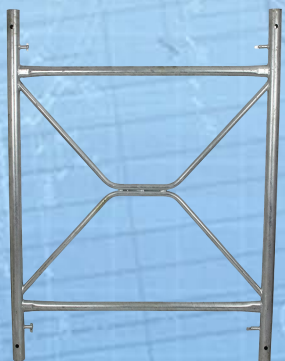
PRODUCT CODE: FF4FT001



6FT Formwork Frame

*Formwork Frame 6FT
1219mm x 1829mm
HDG Steel*

PRODUT CODE: FF6FT001



5FT Formwork Frame

*Formwork Frame 5FT
1219mm x 1524mm
HDG Steel
Suits with 5FT Brace*

PRODUCT CODE: FF5FT001



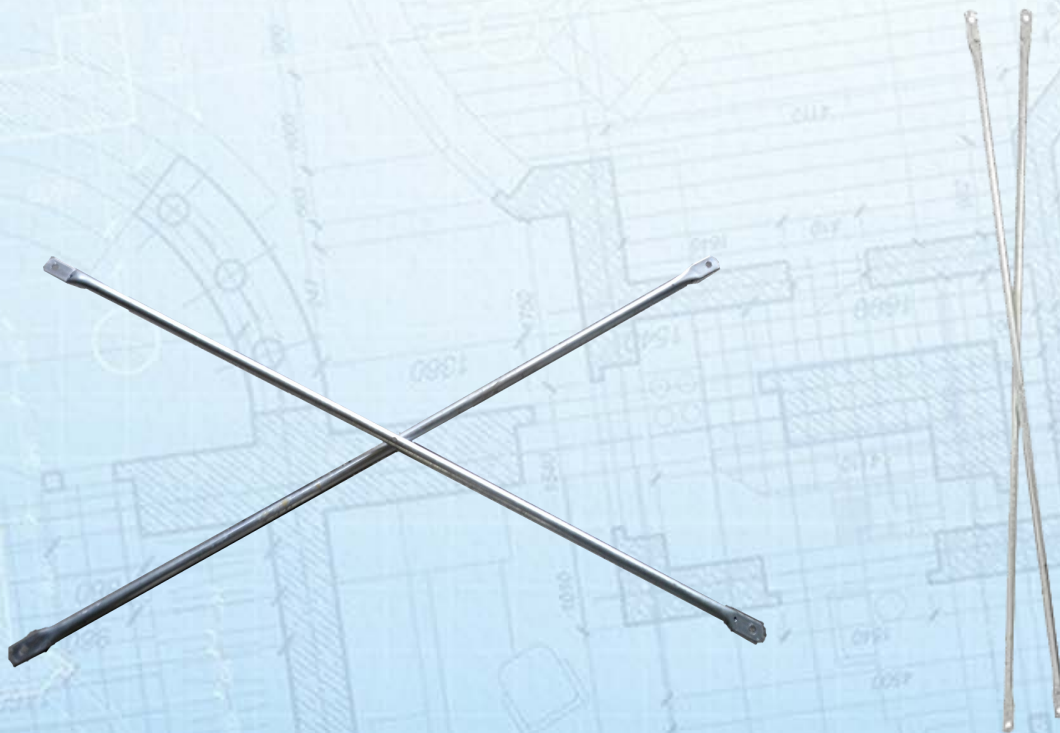
7FT Formwork Frame

*Formwork Frame 7FT
1219mm x 2129mm
HDG Steel
Suits with 6FT Brace*

PRODUCT CODE: FF7FT001

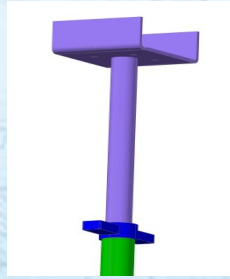
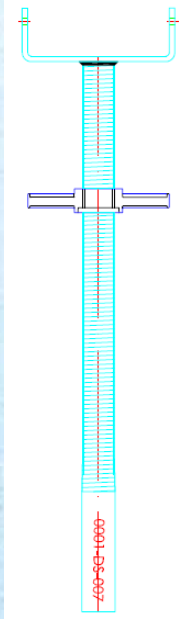
SHORING FRAME BRACES

Used to brace frames and control the distance between frames, Available in 5 sizes 3FT~7FT



PRODUCT CODE	Fitted Frame	Frame Height	Frame Centres	Brace Length overall	Brace Length Hole Centres
FFB-3R15	3ft	914	1524	1413	1363
FFB-3Y12	3ft	914	1524	1413	1363
FFB-4B12	4ft	1219	1524	1574	1524
FFB-4O15	4ft	1219	1524	1827	1777
FFB-5B12	5ft	1524	1524	1774	1724
FFB-5B15	5ft	1524	1524	2002	1952
FFB-6G15	6ft 7ft	1829 2129	1524	2205	2155

SHORING FRAME JACKS



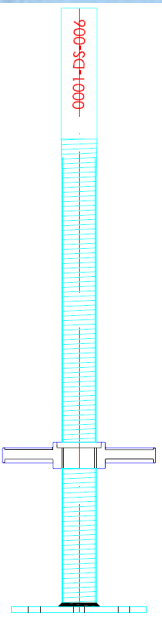
Formwork U Head Jack

Hollow 48mm Tube Diameter

Galvanized for long lasting protection.

Used for propping timber or steel beams

PRODUCT CODE: FUJ000



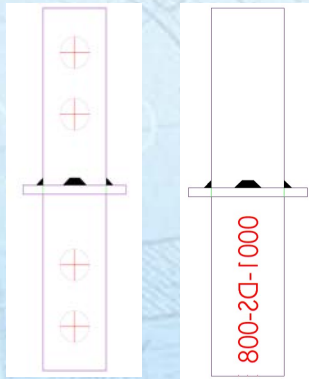
Formwork Flat Jack

***Hollow Jack
48mm Tube Diameter***

PRODUCT CODE: FFJ000

SPIGOT/FRAME JOINERS BASE PLATE/LOCK PIN

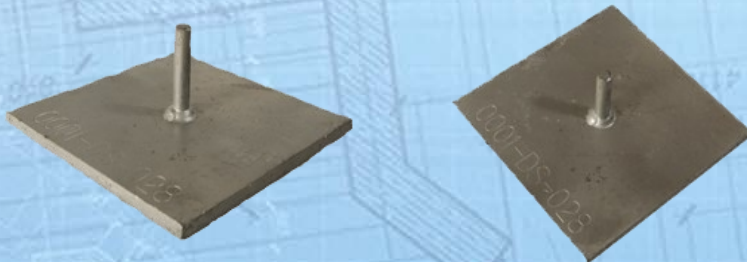
Formwork Spigot/ Frame Joiner



*L 0.2m x W 0.038m
x H 0.038m / 0.42kg
38mm diameter
Made from Galvanized
steel*

PRODUCT CODE: SPI00001

Shoring Frame Base Plate



*Shoring Frame Base
Plate 150x150mm
Galvanised for long
lasting protection*

PRODUCT CODE: SFBP-0001

Shoring Frame Lock Pin



*Shoring Frame Lock Pin
16mm Dia x 46mm*

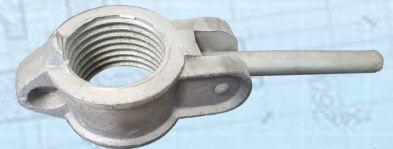
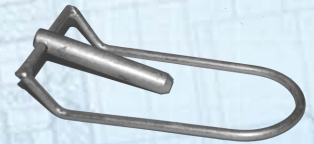
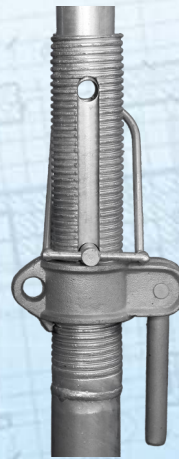
PRODUCT CODE: DYN-LP

ACROW PROPS

from 690mm to 4950mm

(Stock Available BRISBANE, MELBOURNE....Shipping Australia wide, call for quote)

An Acrow prop is a telescopic tubular steel piece of construction equipment. It is used as a temporary support. Acrow props are known by several names including shore prop, acrow prop, acrow jack and post shores.



Australian engineered and certified, Dynaton props are made from high quality steel and hot dipped galvanised to ensure our rigorous quality standards are met and maintained.

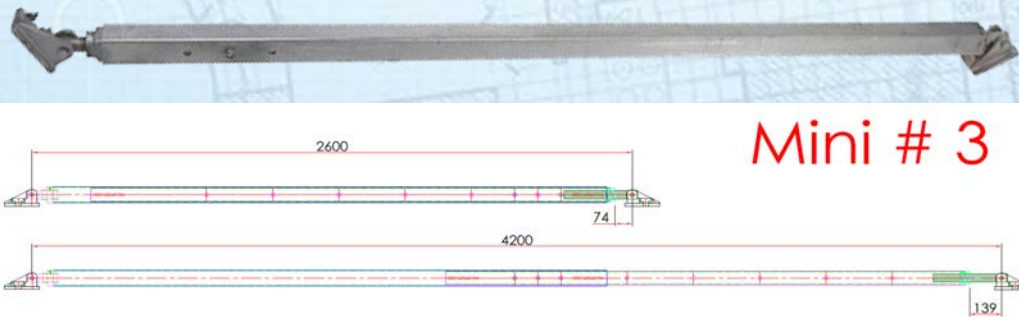
Item No.	Length	Part No.
Stump Pro	Closed 450mm—Open 700mm	APROP#SP
#00	Closed 690mm—Open 1163mm	APROP#00
#0	Closed 1090mm—Open 1833mm	APROP#0
#1	Closed 1620mm—Open 2620mm	APROP#1
#2	Closed 1950mm—Open 3210mm	APROP#2
#3	Closed 2590mm—Open 3935mm	APROP#3
#4	Closed 3200mm—Open 4950mm	APROP#4

TILT PROPS

Mini & Standard

TILT PROP (MINI)

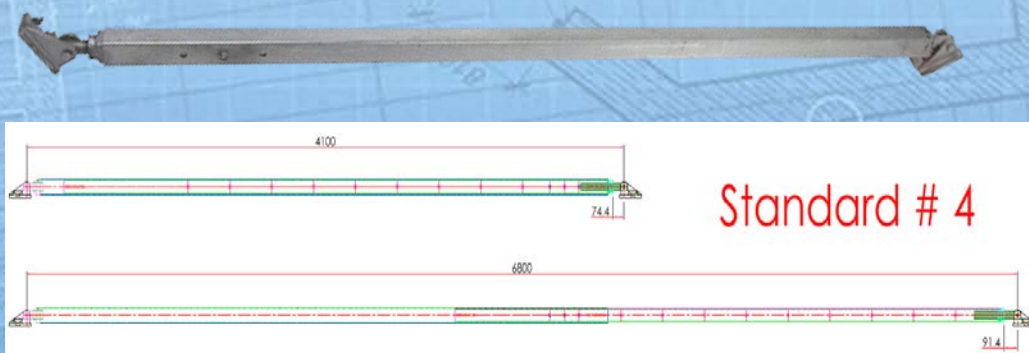
*Tilt Up Prop Mini 2600-4200mm,
Unit Weight 40kg, HDG Steel*



PRODUCT CODE: TPROP2600

TILT PROP (STANDARD)

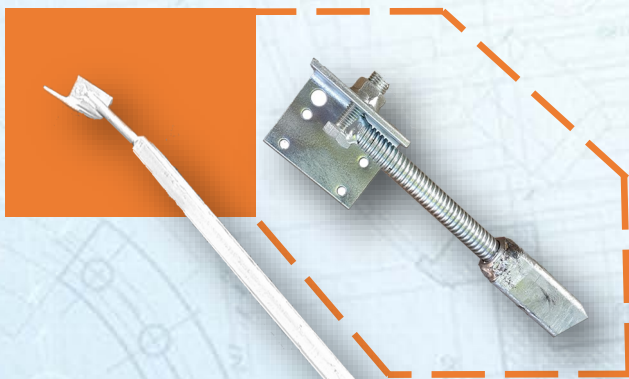
*Tilt Up Prop Standard 4100-6800mm
Unit Weight 59.83kg, HDG Steel*



PRODUCT CODE: TPROP4100

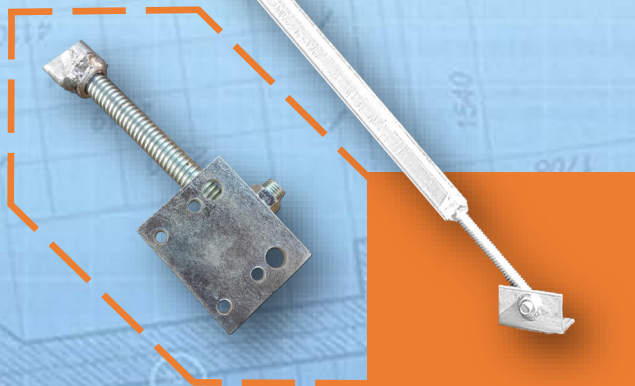
PLASTERBOARD WALL PROP

1200mm, 2400mm and 4000mm



Dynaton
**Plasterboard Wall
Prop (aka PWP).**
**Specially designed
for supporting the
plasterboard wall,
Fully Hot Dipped
Galvanized Steel.**

**There are 3 sizes
available, 1200mm,
2400mm and
4000mm, with 200m
adjustable length.
Perfect for use with
Ritek, AFS logicwall
and Permaform wall
systems.**



Product	Length	Product Code
1200mm PWP	1330mm—1740mm Standard Duty	PWP1200SD
2400mm PWP	2530mm—2940mm Standard Duty	PWP2400SD
4000mm PWP	4120mm-4560mm Heavy Duty	PWP4000HD

TURNBUCKLE PROPS

These enable adjustments to be made to ensure the correct vertical alignment of the system, as well as providing a restraint against the lateral pressure of the concrete during pouring.

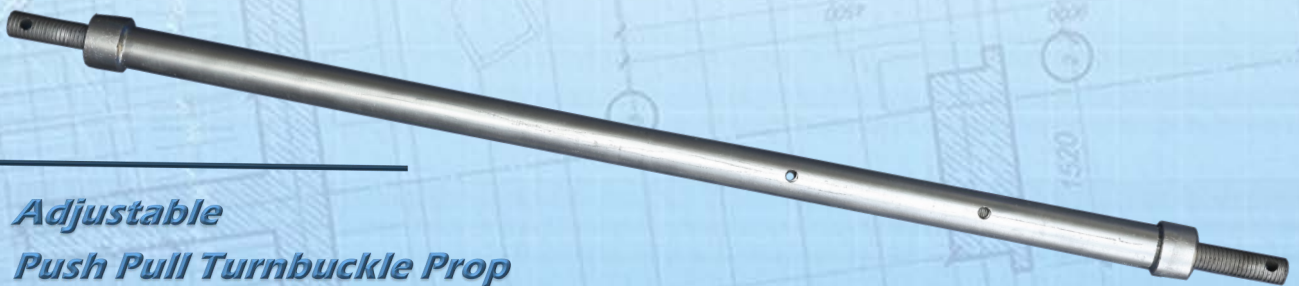
Push Pull Turnbuckle Prop



Turnbuckle Prop Type 1 (1040~1790mm)

PRODUCT CODE: DS-DYN-050

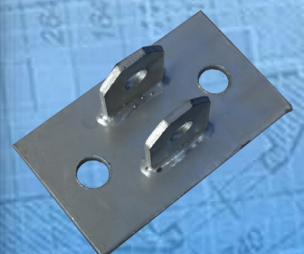
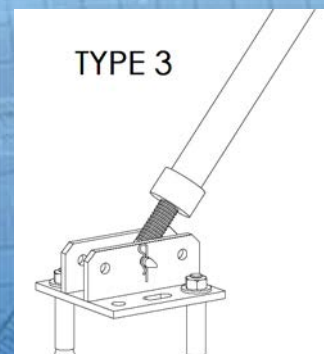
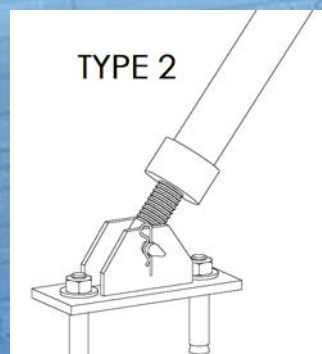
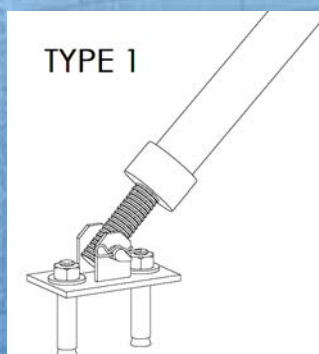
Adjustable Turnbuckle Prop



*Adjustable
Push Pull Turnbuckle Prop
Closed 1675 - Open 3650mm
60mm Nut & 16mm Prop
HDG Steel*

PRODUCT CODE: DS-DYN-52

There are 3 types of base plates that can be used with Dynaton Turnbuckle Prop. All base plates and prop pins are on the Prop Accessories Pages (page 10 & 11)



Aluminium Props

2.6-4.8m/ 1.95-3.5m/ 4.3-6.25m

Light, strong and a high load capacity prop. Aluminum props are used to decrease fatigue of the workers erecting the props. Australian Engineered and Certified



Aluminium Prop 1.95-3.50m / Product Code: DYN350

Aluminium Prop 2.60-4.80m / Product Code: DYN480

Aluminium Prop 4.30-6.25m / Product Code: DYN625

Prop Accessories

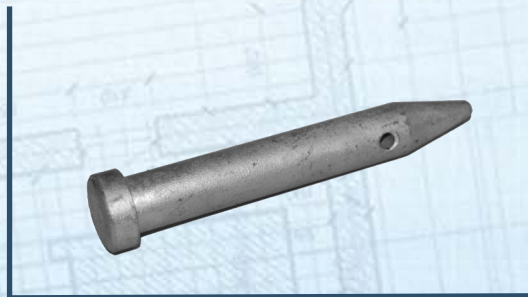
Prop Pin & Collar

16mm Prop Pin



Product Code: PRP00016

16mm Podger Pin



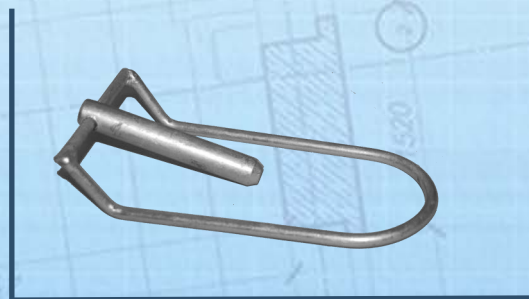
Product Code: DS-DYN-054

Podger Pin 16mm Lockable



Product Code: DS-DYN-054a

16mm Prop Pin D Style



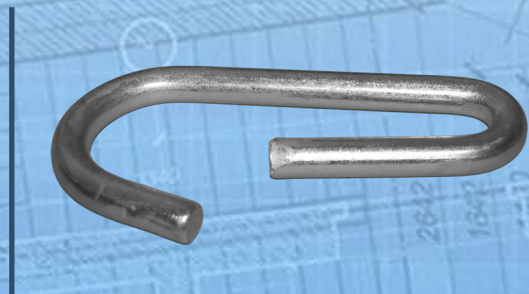
Product Code: PRP16D

Acrow Prop collar



Product Code: APROPC000

16mm Prop Pin G Style



Product Code: PRP16G

Prop Accessories

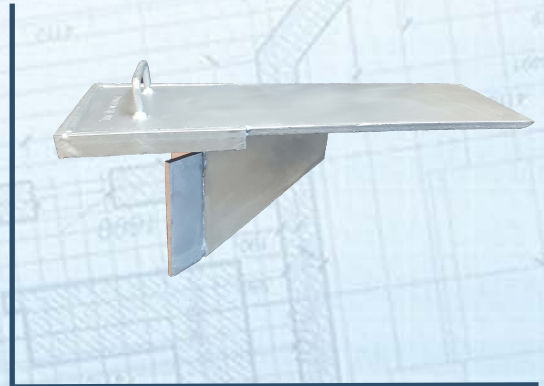
Prop Pin/ Base Plate Connection/ Podger Pin/
Acrow Prop Collar

Universal Tripod



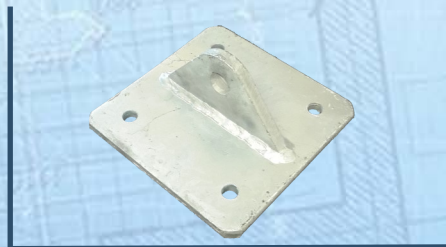
Product Code: DYN-K1408

Masonry Wall Support



Product Code: DYNWS

Prop Swivel Head Male



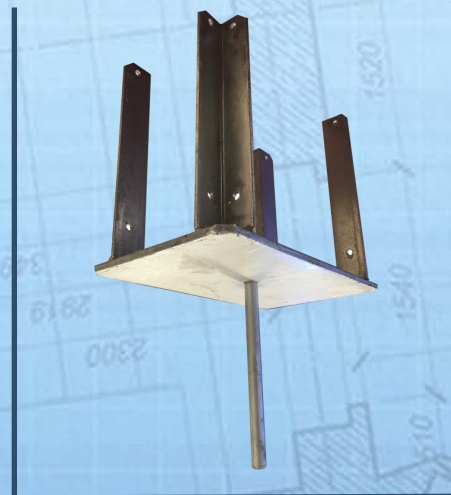
Product Code: APROPSHA-1

Prop Swivel Head Female



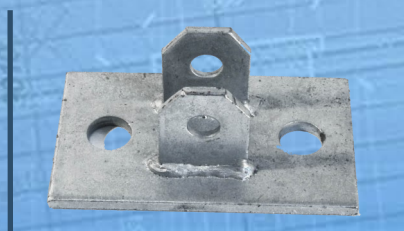
Product Code: APROPSHA-2

Prop I- Beam Support



Product Code: DYN-IBS

Base Plate Connection Type 1 (100 x 170mm)



Product Code: DS-DYN-053-T1

Base Plate Connection Type 3 (216x 216mm)



Product code: DS-DYN-053-T3

Z Bar Products

Z Bar/Joiners/Nuts/Plates/Conduit

15-17mm Z Bar



Length	Code
1.2m	ZBA01200
1.5m	ZBA01500
2.0m	ZBA02000
5.8m	ZBA05800

Z Bar plate

7.5 mm & 10mm



7.5mm Code: ZBP00001

10mm Code: ZBP00002

Conduit 27mm

3.8m x 20 /pack



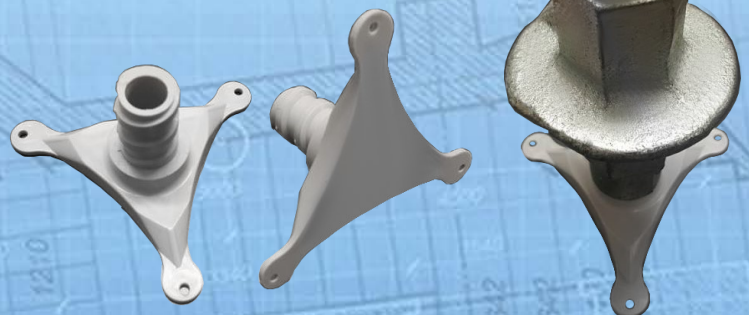
Product Code: CON273800

Conduit Cones



Product Code: CONC00001

Water Stop Chair



Product Code: ZBWSC

Z Bar Products

Z Bar/Joiners/Nuts/Plates/Conduit

Z Bar Joiner



Joiner	Code
50MM Cast Iron (not weldable)	ZBJ050B
50MM Machine Steel (weldable)	ZBJ050MS
100MM Cast Iron (not weldable)	ZBJ100B
100MM Machine Steel (weldable)	ZBJ100MS

Z-BAR NUT 17MM



Product Code: ZBN140

Z-BAR NUT 17MM DOUBLE ARM



Product Code: ZBN240

Z-BAR TIE NUT



Product Code: ZBTN220

Z-BAR WATER STOP



Product Code: ZBWS002

Formwork Accessories

Nail/Plastic Fillet/Zip ties

15kg Bucket Nails (bullet head)



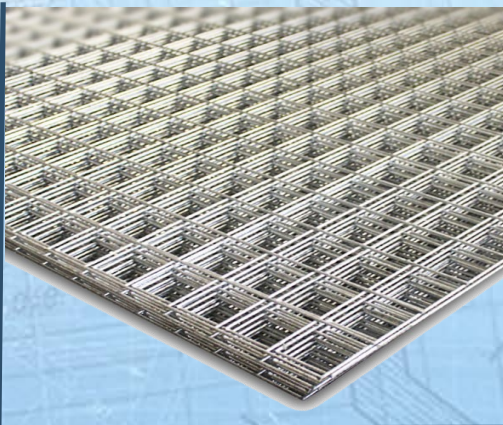
Length	Part No.
50mm x 2.8mm	NBB5028015
75mm x 3.75mm	NBB7537515
30mm x 1.8mm	NBB3018015

Zip Ties (100 /bag)



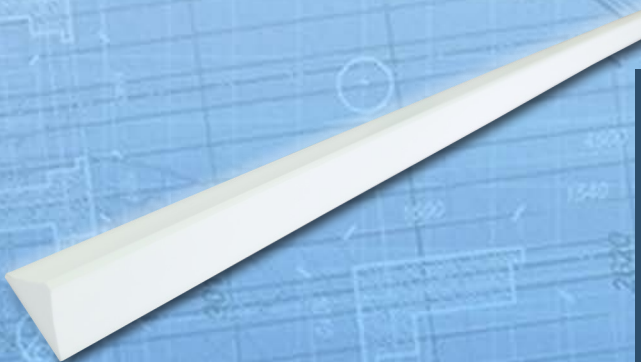
Length	Part No.
300mm	ZIP76300
400mm	ZIP76400

Peno Mesh



Size	Part No.
25x25MM grid 2.5mm wire 2.4 x 3.0m	WM2525252430
25x50MM grid 3.15mm wire 2.4 x 3.0m	WM25503152430

PVC Fillet (various sizes can be pre-ordered)



Size	Part No.
18mm x 18mm x 25mm	181825C
17mm x 17mm x 23mm	171723A

Packaging

Duct Tape & Strapping

Duct Tape



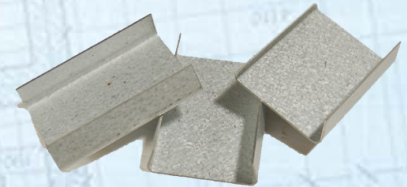
50mm x30mm Roll
Part No. DT00080

Industrial Cling Wrap



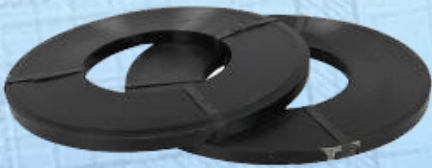
500m X 6 Rolls/ Carton
Part No. CWR00500

Strapping Clip



19mm
99-GSS19Clip

Steel Strapping 19mm



Part No. STRAP00019

Steel Strapping Dispenser Stand



Part No. 99-GSSDS



Steel Strapping Crimper
Part No. 99-GSSC19



Steel Strapping Tensioner
Part No. 99-GSST

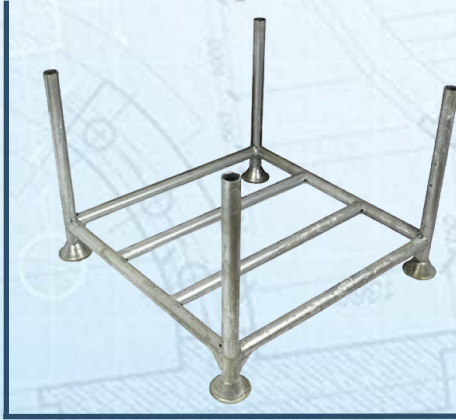


Manual Sealess Strapper
Part No. DYN-A333

Formwork Accessories

Pallet/Pressed Washer/Coupler/Screen Cone/bits

Pallet Open



***890 x 890 Galvanised
Part No. PAOR0001***

Pallet Mesh



***890 x 890 Galvanised
Part No. PAMR0001***

Plain Black Coupler



Part No. BCM16050

Superslim Pressed Washer



Part No. PWA00001

Screen Cones



Part No. SSC0100

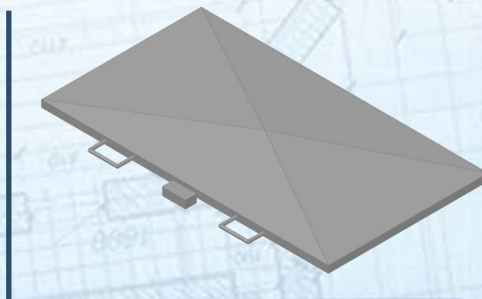
Lifting Bin & Tool Box

Tool Box/Lifting Bin



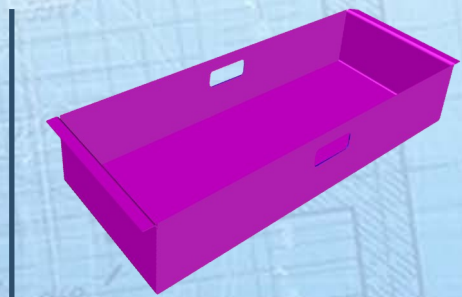
1810x1100x620mm
Stackable Load Rating 2.5t
Part No. TBin-LB18

Tool Box Lid



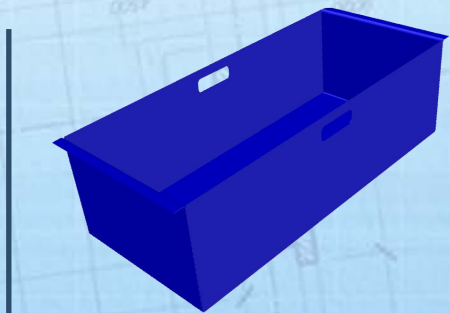
suits TBin-LB18
Part No. TBox-Lid18

Tool Box Tray 150mm



150mm Deeps
Part No. TBOX-T150

Tool Box Tray 300mm



300mm Deeps
Part No. TBOX-T300



Self Climbing Screens (Design/Supply/Modify)



Formwork Screens.

Can Supply:

Screens

Screen Accessories

Modifications

***Design Work /
Screen Fabrication &
Layouts***

***Please call for more
information & pricing
or to arrange a
meeting with our
sales consultants.***

***We can also design
and supply new
screens with
sufficient lead time.***



***Dynaton Sales & Hire Head Office
213 Sandy Creek Road, Yatala, QLD 4207
Tel: 07 3287 4633 International: +61 7 3287 4633
Fax: 07 3801 8026***

FreeForm Oil

Concrete form & Mould release agents

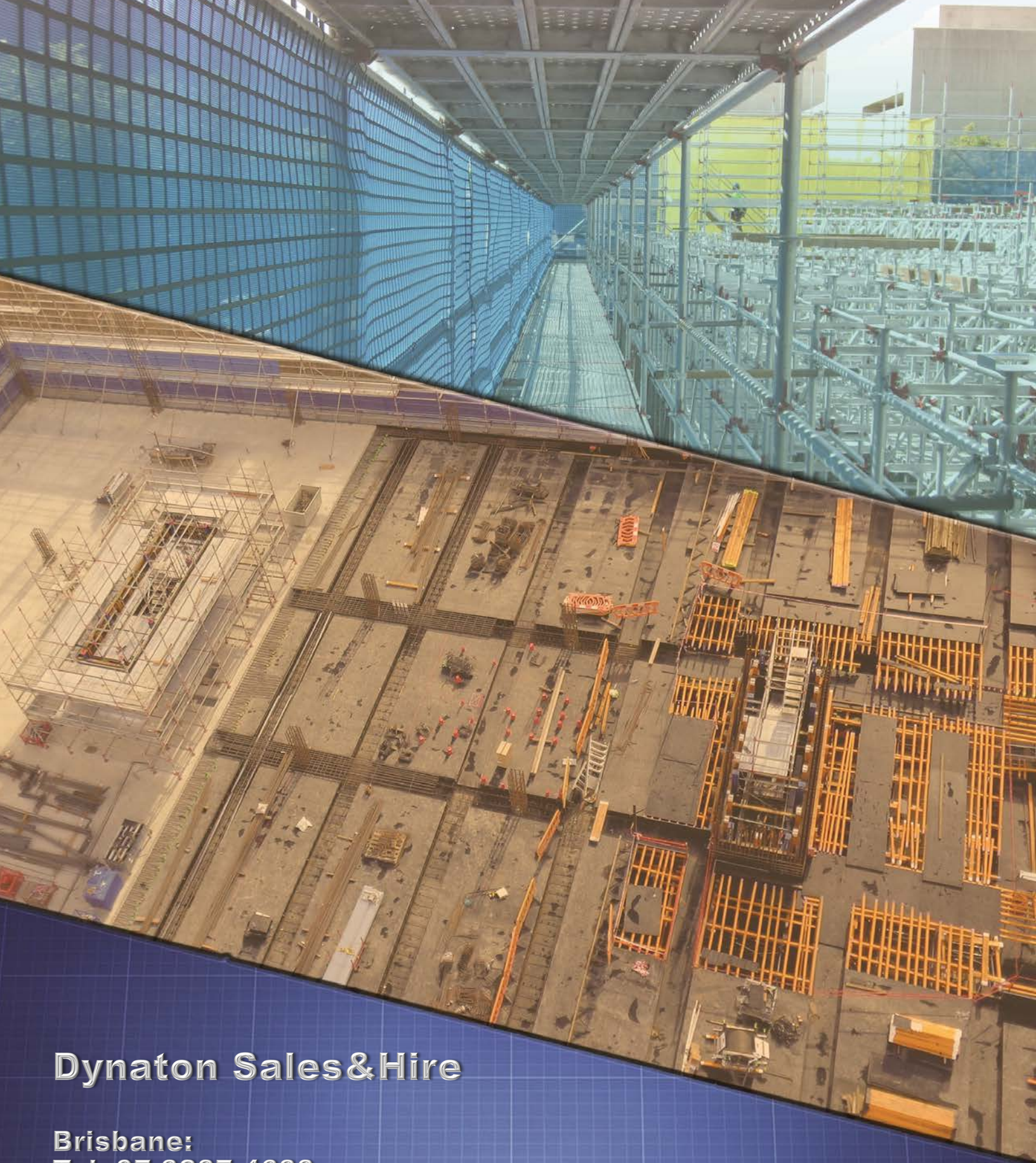
FreeForm SG is a general purpose, mid-viscosity concrete form and mould release agent suitable for a wide range of applications.

FreeForm products are available in a range of grades to suit the majority of applications and ensure high quality results.

FreeForm release agents are intrinsically safe, environmentally friendly and user friendly :

- Made from non-hazardous, non-toxic raw materials.
- High flash point and low flammability compared to hydrocarbon solvents.
- Biodegradable.
- No release of VOCs into the atmosphere.
- No harmful vapours emitted during use.
- No special equipment required under normal conditions of use.





Dynaton Sales&Hire

Brisbane:

Tel: 07 3287 4633

Address: 213 Sandy Creek Rd, Yatala QLD 4207

Sydney:

Tel: 02 8711 3470

Address: 1/8 Cornwall Rd, Ingleburn NSW 2565

Email: Sales@dynaton.com.au

WWW.DYNATON.COM.AU

