

A young child with a cloud headband is holding a glowing white unicorn LumiPet. The background is dark blue with clouds. On the left, a vertical strip shows various colored LumiPet characters (pink, blue, green, yellow, red, purple, orange, grey, white).

LumiPets®

HELLO!
I am a LumiPet



THANK YOU
for your purchase of our
Color Changing Companion

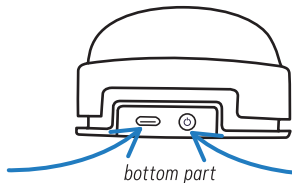
Please read this user manual
carefully before use.

COLOR CHANGING COMPANION

USERS MANUAL

BUTTON INSTRUCTIONS

HOW TO TURN ON AND CHARGE



USB Type-C Port
for charging

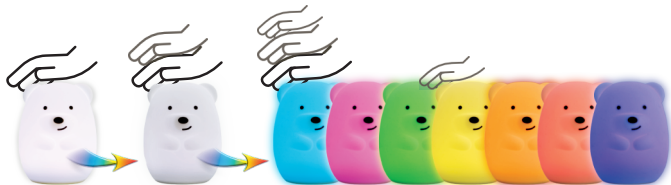
bottom part

POWER BUTTON
starts me on a low white light

TAP CONTROL (changing colors)



you can pat body to switch the color of the lights



1ST TAP
to bright white light

2ND TAP
to slow flow

3RD TAP
to blink color mode

tapping on a color in blink color mode will freeze it to that color

HOW TO TURN OFF TAPPING FUNCTION



To turn off tap function and freeze me on a color of your choice press my power button.

To turn tap function back on press the power button again.

CAUTION

1. Do not disassemble the internal device by yourself, so as not to damage the parts.
2. When not using the lamp for long periods of time, keep it in a dry environment.

EXECUTIVE STANDARD OF THE PRODUCT

GB7000.204-2008

PRODUCT DETAILS

Name:	Colorful silicone night light
Capacity of the lithium battery:	300 mAh
Working voltage/current:	DC 5V/500 mA
Maximum Power:	0.5 W


LUMIEWORLD

LumiPets®

To deliver a world of illumination for children to learn and explore.

Lumieworld.com, LLC
560 22nd St, Zumbrota, MN 55992

www.lumieworld.com

  @lumieworld