

Easter Bunny Door Hanger

What you'll need:

- Craft Felt yardage
- Craft Felt sheets
- Mat board (or cardboard)
- Ribbon
- Fabric scissors to cut the felt
- Sharp scissors (utility knife) to cut the mat board
- Hot glue gun and glue sticks
- Fabric glue for adhering felt on felt
- Template (Print US Letter Borderless)

Step 1.

Using your bunny template cut out the specified stencil quantities out of your mat board using a pair of sharp scissors.

Step 2.

Trace out your cut pieces onto the craft felt of your choice and cut them out leaving the felt approximately ½" larger. The extra overhang of the felt is so that it can easily wrap around the thickness of your board and be secured.

Step 3.

Get your hot glue gun, and wrap the excess felt around your pieces, and glue it to the back of your board. Don't forget to pull the felt taught while you're gluing to make a smooth surface on the front. Repeat this step for all your cut out pieces and the matching felt to go with it.

Step 4.

For the eyes, use your fabric glue to adhere the felt on felt. First you'll want to trace out the larger part of the eye - using the *Eyes + Belly* stencil - onto white felt, and cut it out making it approximately 1/2" larger than the stencil so that it can be adhered to the back of the *Eyes + Belly* section.

Next, take the colored part of the bunny's eye and adhere the bunny's *Pupil* (black felt) centered on top using your fabric glue. Then adhere the *Catchlight* (white felt) to the eyes making sure they are on opposite sides.

Take the completed inner eye and adhere it to the outer white part of the eye. Then take your hot glue gun and glue the overhang of the eye to the back of your *Eyes + Belly* section.

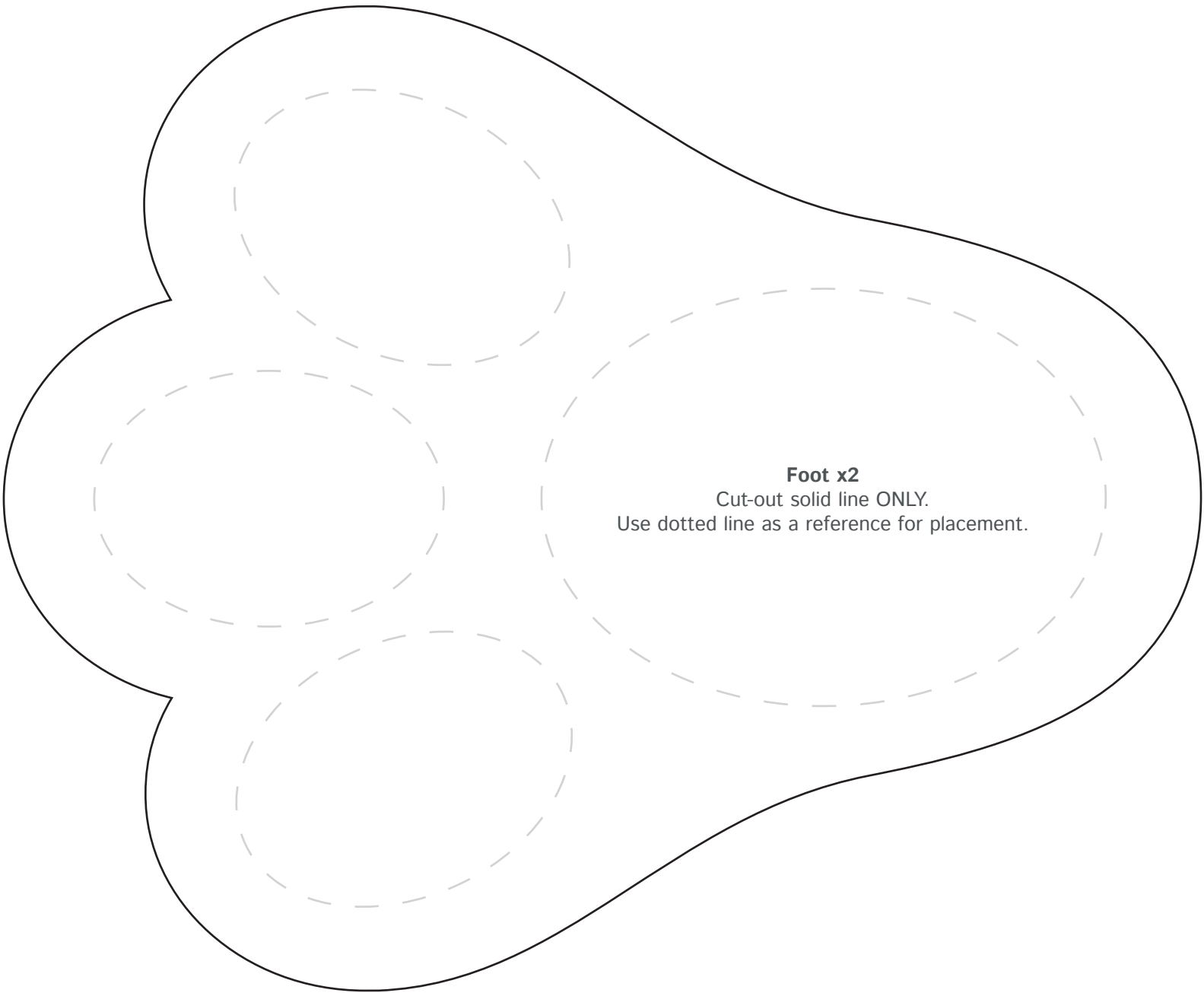
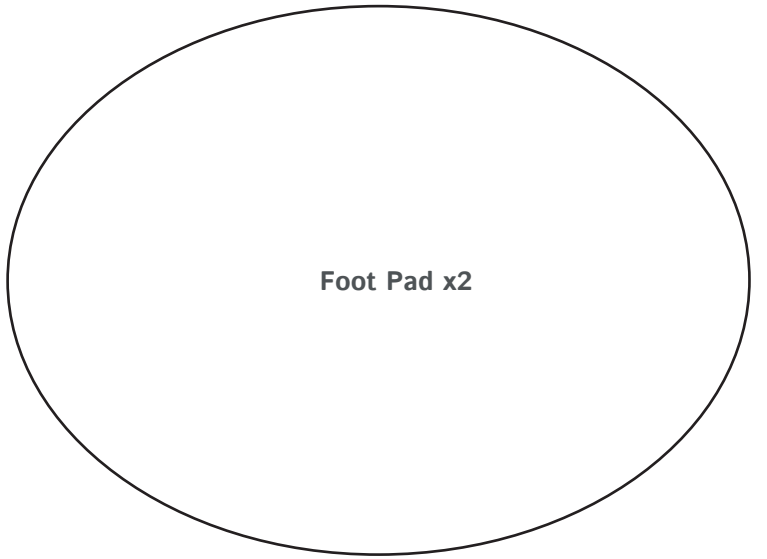
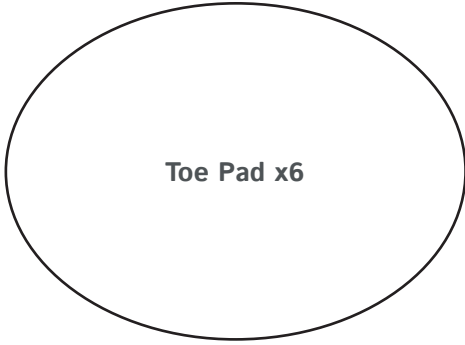
Step 5.

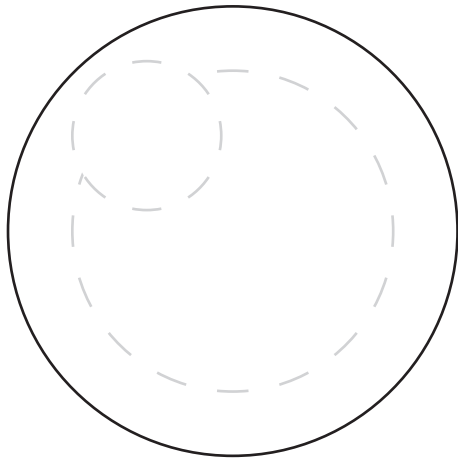
Continue to hot glue each section to one another forming your bunny.

- *Inner Ear* glued to *Outer Ear*.
- *Nose* glued to *Mouth* then glue to *Cheeks*.
- *Foot* and *Toe Pads* glued to the *Feet*.
- *Dewlap* glued to *Eyes + Belly*.
- *Eyes + Belly* glued to *Body*.
- *Cheek* glued on top.
- Then glue the *Feet* to the front and the *Ears* on the back.

Step 6.

Take your ribbon, and hot glue it to the back of your bunny at the top between the ears. Now is the time to also add any embellishments to your bunny like a bow or eyelashes.

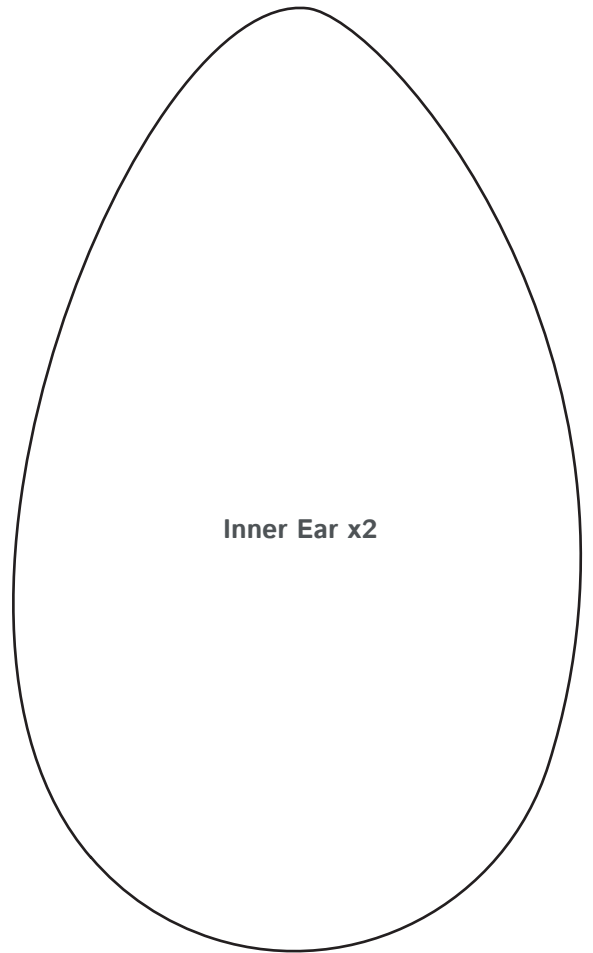




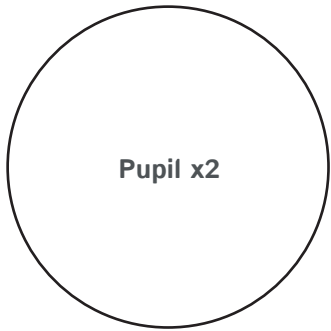
Eye (color) x2

Cut-out solid line ONLY.

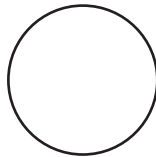
Use dotted line as a reference for placement.



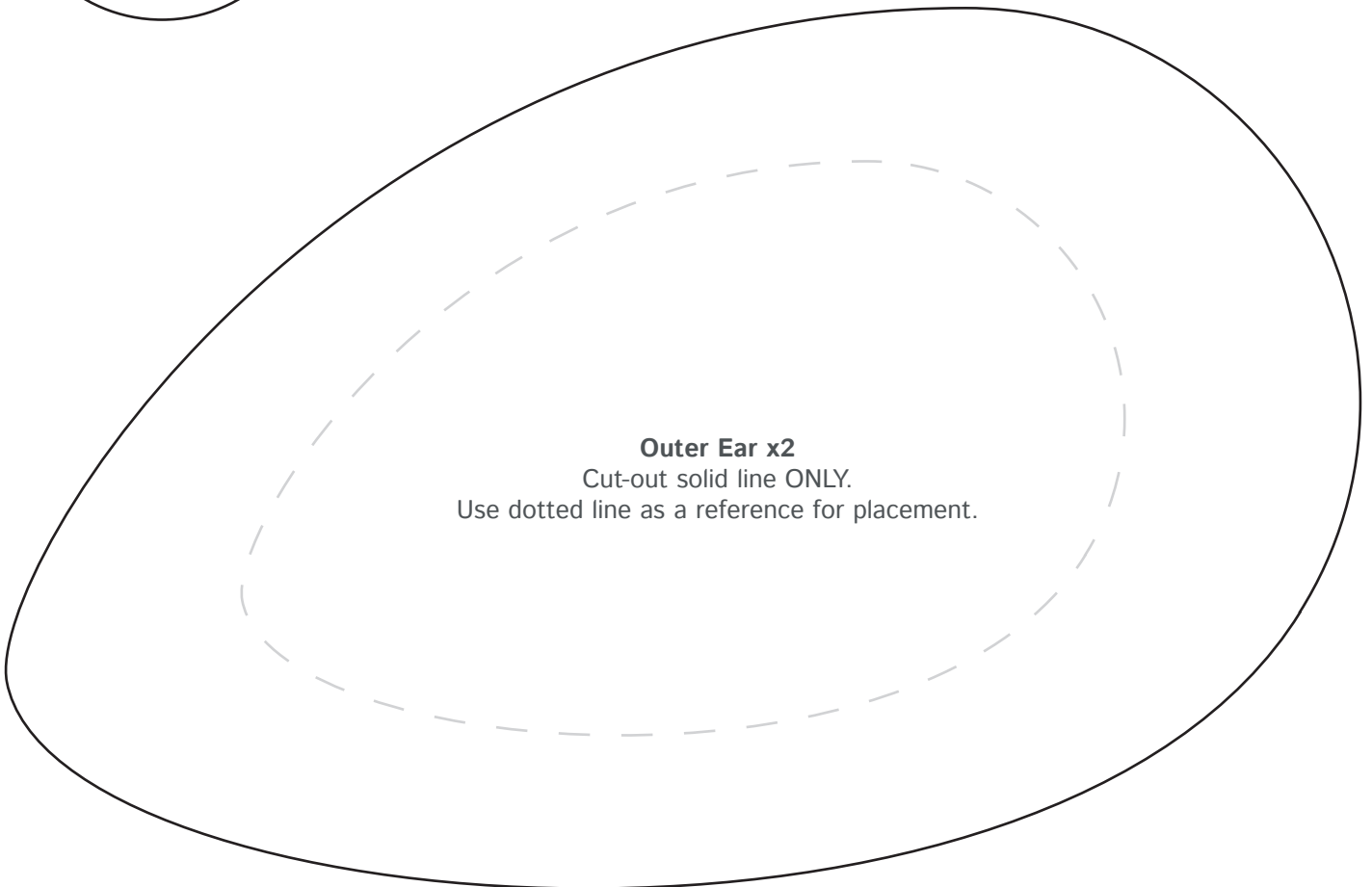
Inner Ear x2



Pupil x2



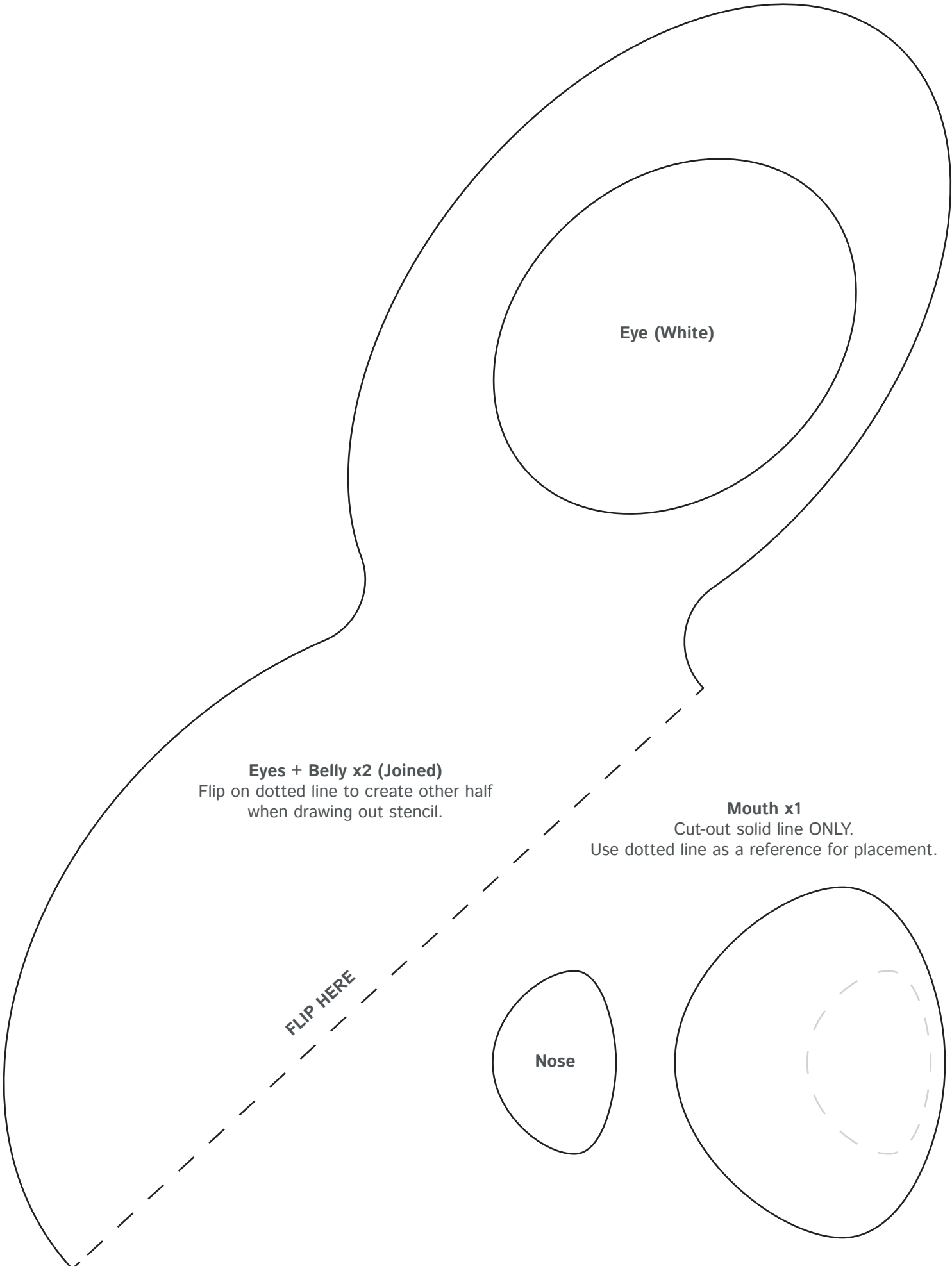
Catchlight x2



Outer Ear x2

Cut-out solid line ONLY.

Use dotted line as a reference for placement.



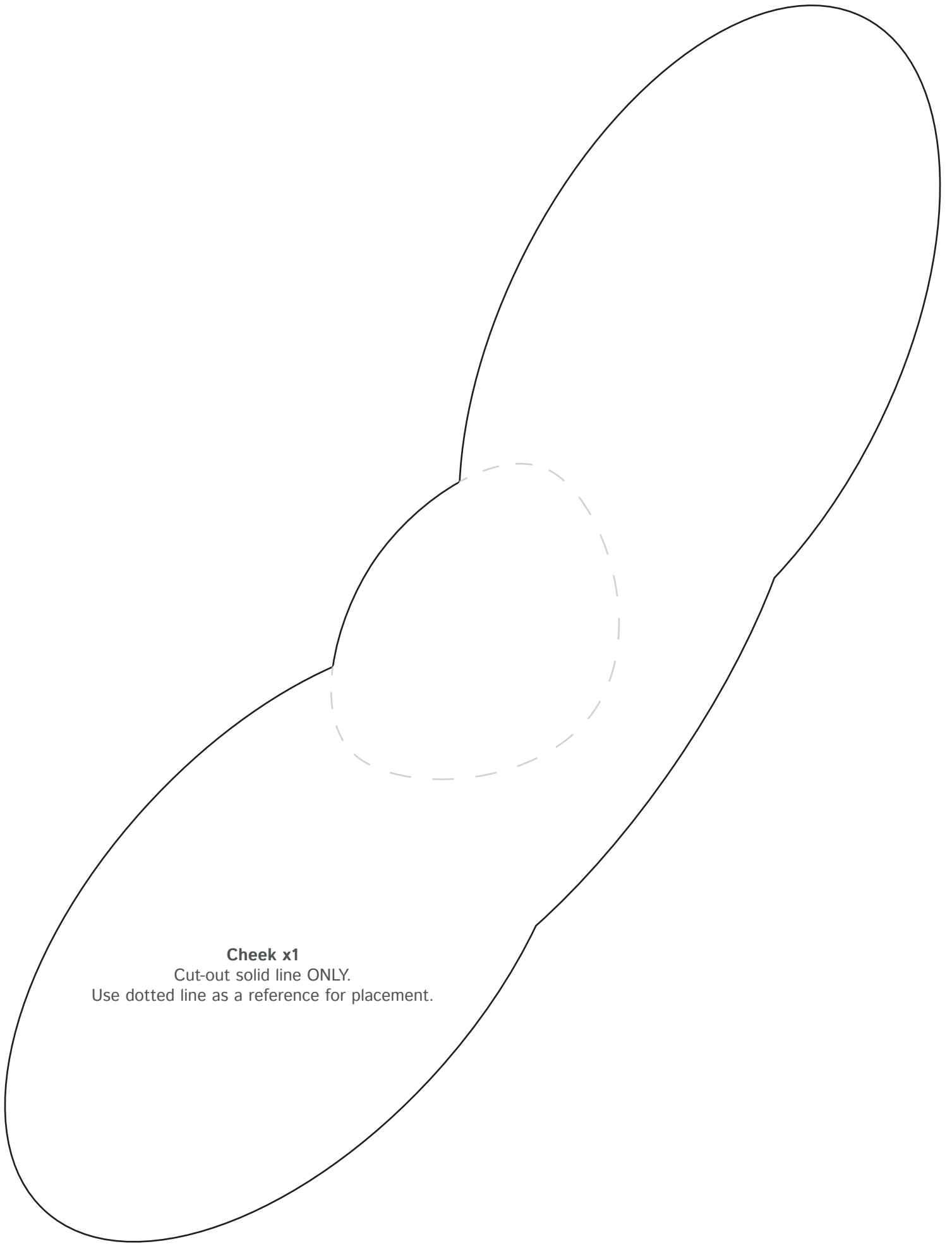
Eye (White)

Eyes + Belly x2 (Joined)
Flip on dotted line to create other half
when drawing out stencil.

Mouth x1
Cut-out solid line ONLY.
Use dotted line as a reference for placement.

FLIP HERE

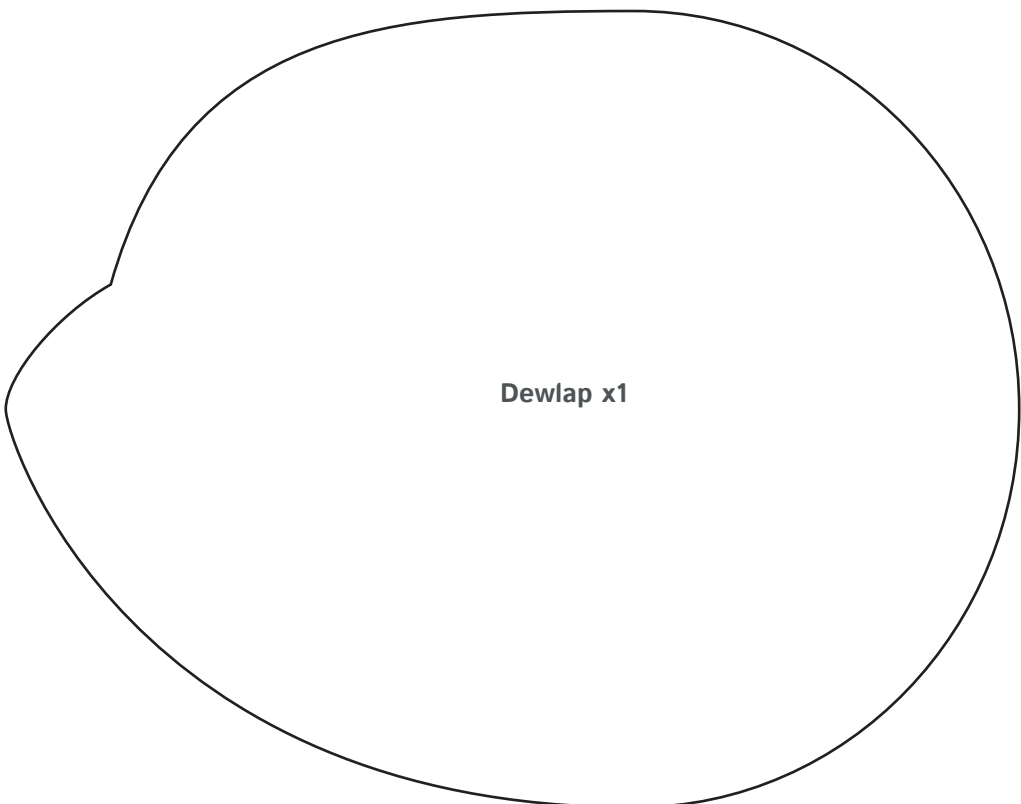
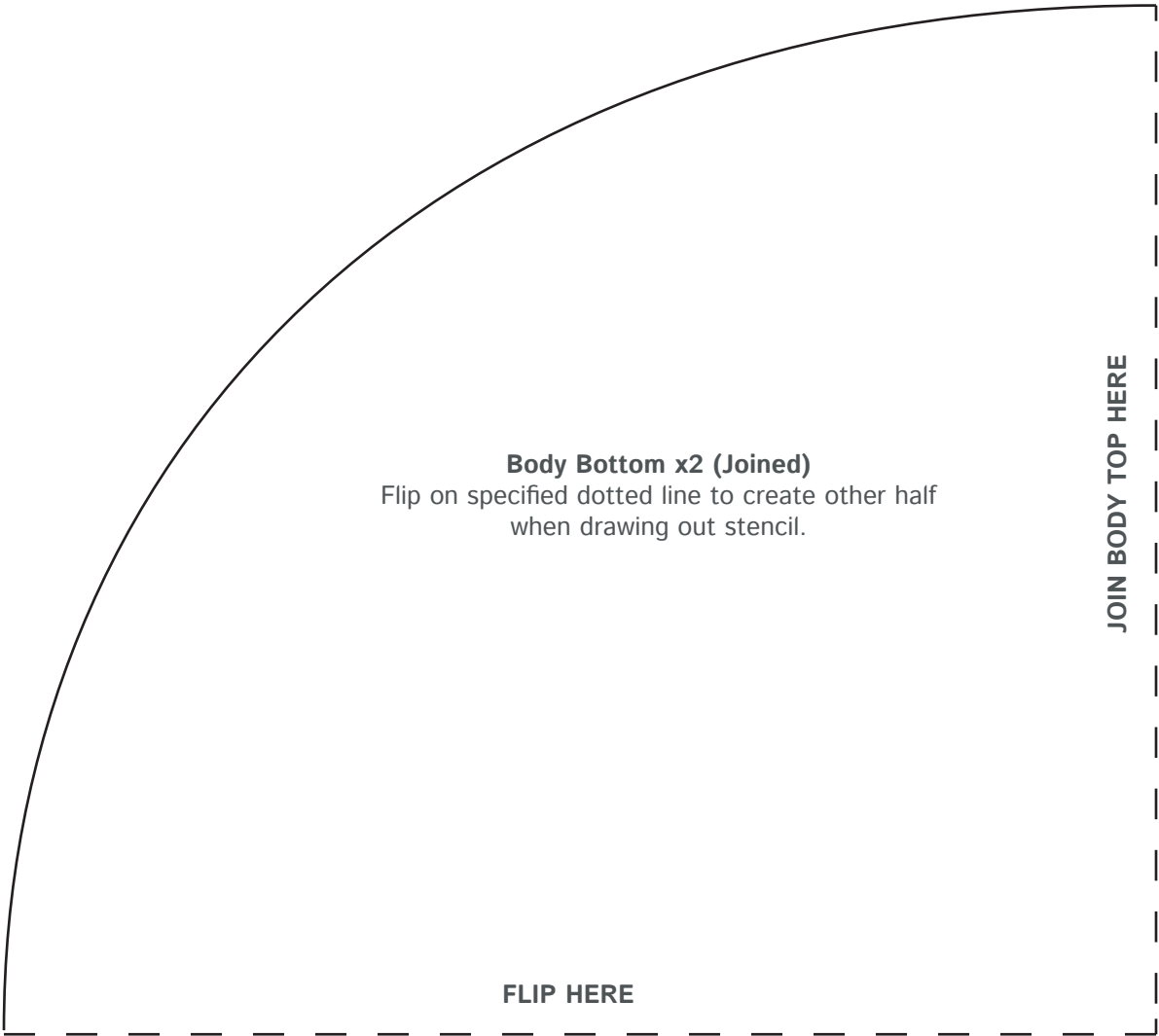
Nose

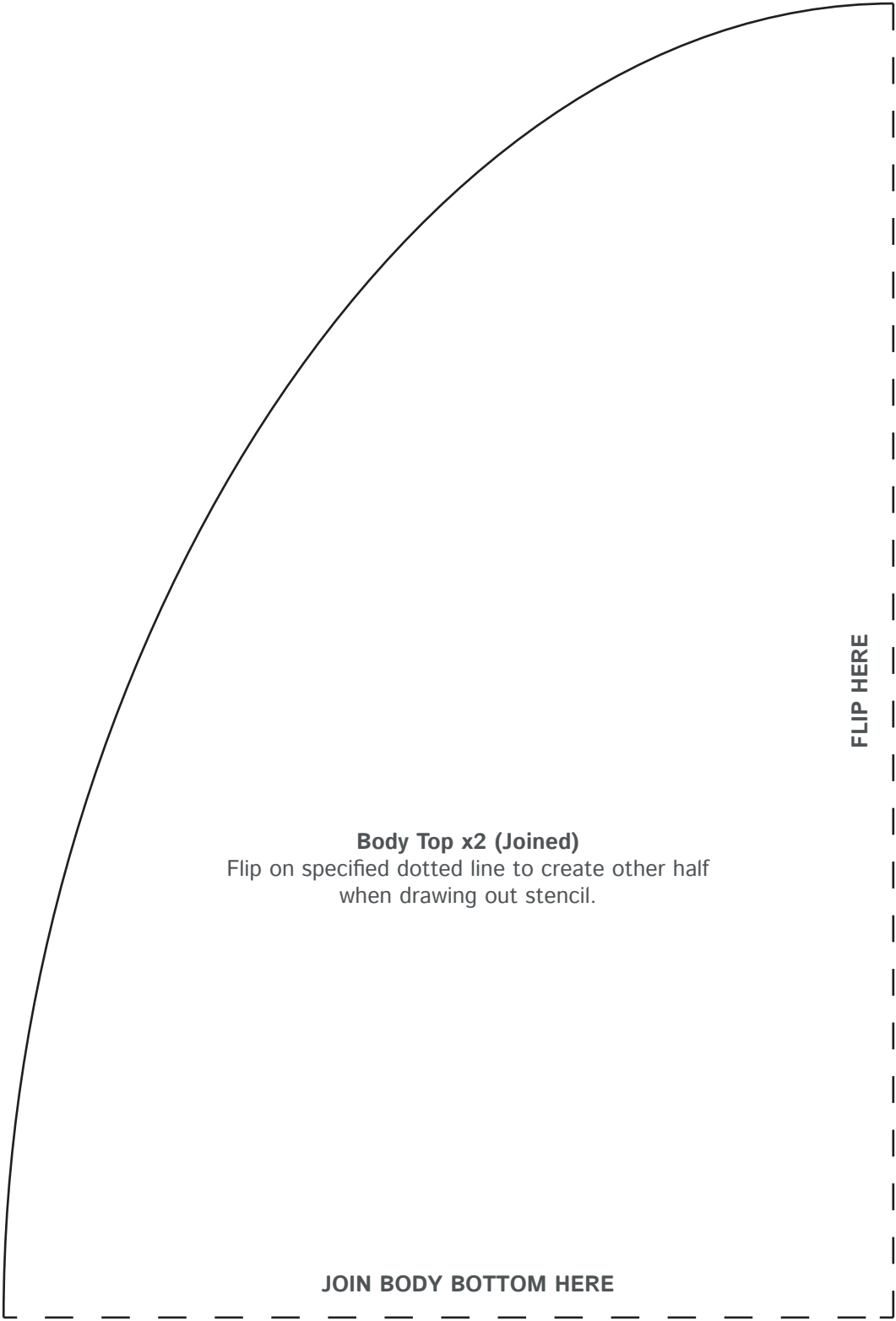


Cheek x1

Cut-out solid line ONLY.

Use dotted line as a reference for placement.





Body Top x2 (Joined)
Flip on specified dotted line to create other half
when drawing out stencil.

FLIP HERE

JOIN BODY BOTTOM HERE