

**BN-LINK®**

PRODUCT #BND-60/U97A

# SHORT PERIOD REPEAT CYCLE TIMER



Intertek

ENERGY  
SAVING

Please keep this handbook

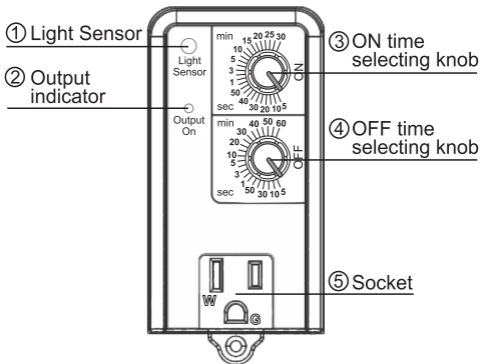
[www.bn-link.com](http://www.bn-link.com)

Designed in California, Made in China

**\*\*UNIT IS SET ON 24 HOUR MODE RIGHT OUT OF THE BOX\*\***

When activating one of the three modes: Make sure to turn both knobs all the way when setting a certain mode on this unit. The unit will not activate if knobs are not fully turned all the way. (Turn the knobs until they cannot go any further, either way)

## PRODUCTS VIEW



- ① **Light Sensor:** Functions during the day or during the night.
- ② **Output indicator:** Light illuminates when there is power output in the socket.
- ③ **ON time selecting knob:** To set the “ON” duration for the equipment.
- ④ **OFF time selecting knob:** To set the “OFF” duration for the equipment.
- ⑤ **Socket:** Only intended to be used with a grounded device.

## RATINGS

Supply voltage: 125V~,60Hz

Max. loading: 15A/1875W Resistive

15A/1875W Tungsten, 15A/1875W Ballast, 1 HP, TV-5

Operating temperature: 5°F –122°F(-15°C–50°C)

Storage temperature: -4°F –140°F(-20°C–60°C)

Protection class: IP20

## WARNING

- Electrical shock hazard
- Use a grounded outlet
- Follow local electrical codes
- For indoor use only
- Keep children away
- Unplug timer before cleaning
- Fully insert plug
- Do not use in wet locations
- Do not exceed electrical ratings

## APPLICATIONS

- Co2 systems
- Heating systems
- Humidifiers
- Nebulizers
- Hydroponic pumps
- Cooling systems
- Indoor sprinklers
- Aquariums
- Ventilators

## **DANGER**

To reduce the risk of electric shock, this product has a grounding type plug that has a third (grounding) pin. This plug will only fit into a grounding type power outlet. If the plug does not fit into the outlet, contact a qualified electrician to install the proper outlet. Do not change the plug in any way.

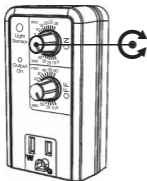
## **BRIEF INTRODUCTION**

### **MAIN FEATURES:**

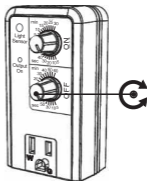
- With Day/Night Sensor
- ON---5 seconds to 30 minutes
- OFF---5 seconds to 60 minutes
- Functions during the day, during the night, or 24 daily

## **HOW TO INSTALL**

### **Step 1**      **Set ON/OFF Duration**



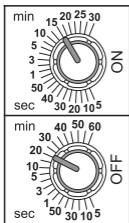
**ON Time**



**OFF Time**

**ON Time: Duration for which equipment will run.**

**OFF Time: Duration in between ON times.**

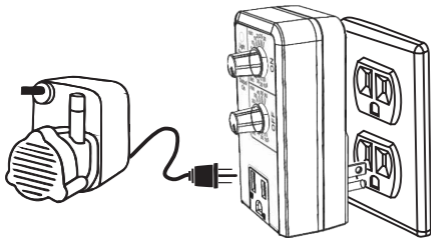


*For example:*

*If a device is required to run for 15 minutes and stop for 20 minutes, turn the ON time dial till the white line aligns the 15-minute mark and turn the OFF time dial till the white line aligns the 20-minute mark.*

**Step 2**

**Plug into 125VAC outlet**

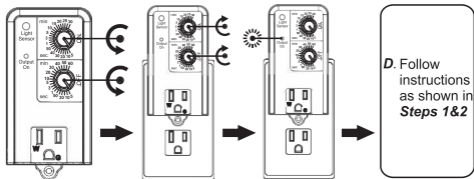


*For example:*

*Use with irrigation pump (or other load)*

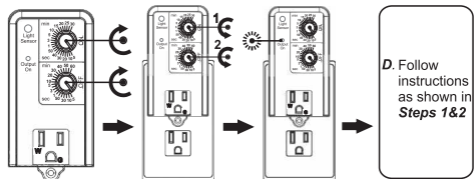
# OPTIONAL SETTINGS

## Change To 24-hour Control



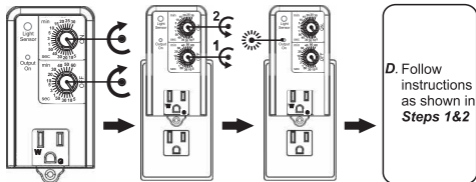
- A.** Set both values to minimum
- B.** Plug in, then set both values to maximum within 5 seconds
- C.** Output light turns on or off according to actual setting
- D.** Follow instructions as shown in Steps 1&2

## Change To Day Control



- A.** Set both values to maximum
- B.** Plug in, then set top value to minimum followed by button value to minimum within 5 seconds
- C.** Output light turns on or off according to actual setting
- D.** Follow instructions as shown in Steps 1&2

## Change To Night Control



- A.** Set both values to maximum
- B.** Plug in, then set bottom value to minimum followed by top value to minimum within 5 seconds
- C.** Output light turns on or off according to actual setting

## TROUBLESHOOTING

### • **PROBLEM:**

Timer does not work in the day.

### ◦ **POSSIBLE CAUSES AND SOLUTION:**

1. Timer is set to Night Control mode. Please switch to Night Control mode.
2. Please remove dust or other obstacles from the light sensor located on the upper left corner.
3. The on timer is too short and the off time is too long. Please check the dials.

• **PROBLEM:**

Timer does not work.

◦ **POSSIBLE CAUSES AND SOLUTION:**

Check the power supply to the timer.

• **PROBLEM:**

Timer does not work in the night.

◦ **POSSIBLE CAUSES AND SOLUTION:**

1. Timer is set to Day Control mode. Please make sure the timer is in Night Control mode.
2. Please make sure the front of the timer is not exposed to light.
3. The on time is too short and the off time is too long. Please check the dials.

• **PROBLEM:**

Timer works day and night in Day Control mode.

◦ **POSSIBLE CAUSES AND SOLUTION:**

1. Timer is set to 24-hour Control mode. Please make sure the timer is in Night Control mode.
2. Please make sure the timer is located with sufficient light in the day.
3. Please remove dust or other obstacles from the light sensor located on the upper left corner.

• **PROBLEM:**

The ON time is too long or too short.

◦ **POSSIBLE CAUSES AND SOLUTION:**

Please turn the dial to the next or previous scale.



- **PROBLEM:**

Timer does not work properly: it turns on and then turns off in a short moment.

- **POSSIBLE CAUSES AND SOLUTION:**

1. Please make sure the front of the timer is not exposed to light.

2. Please make sure the light controlled by the timer will not light up the front of the timer.

## **BN-LINK INC.**

12991 Leffingwell Avenue, Santa Fe Springs  
Customer Service Assistance: 1.909.592.1881

E-mail: [support@bn-link.com](mailto:support@bn-link.com)

[Http://www.bn-link.com](http://www.bn-link.com)

Hours: 9AM - 5PM PST, Mon - Fri

Designed in California Made in China